



1927

Ex Libris

*KINGSVILLE PUBLISHING COMPANY
PRINTERS
KINGSVILLE, TEXAS*



EL RANCHO
1927



COPYRIGHT
1927

VERNA ROSS
EDITOR-IN-CHIEF

JACK MECKLIN
BUSINESS MANAGER



EL RANCHO 1927

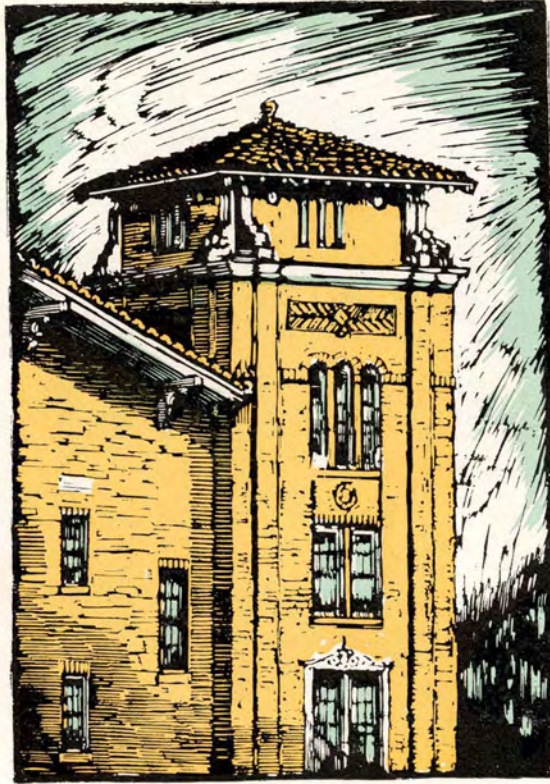
PUBLISHED BY
The
STUDENTS
of
SOUTH TEXAS
STATE TEACHERS COLLEGE

KINGSVILLE.
TEXAS



ORDER of BOOKS

The College
Administration
Classes
Organizations
Athletics
Features
Our Campus



FOREWORD

Into the 1927 El Rancho we have attempted to weave a motif suggestive of the building plan of our institution; to harmonize this motif with the democratic spirit shown on our campus; and to chronicle the varied achievements of what has been to us a great year.

Accept it, scan it, pass judgment upon it, file it away—return to it in the eventide of life; for it will then, we trust, bring back fond memories of our college career.

THE STAFF.



DEDICATION

Because

of her sincerity of purpose, her sympathetic understanding, her kindly attitude toward each individual, and her splendid co-operation and untiring efforts with the staff, we lovingly

Dedicate

The 1927 El Rancho

:: To ::

Jennie L. Splawn

EL RANCHO



JENNIE L. SPLAWN

EL RANCHO

President's Address

to the

Students

"Come, my friends.
 'Tis not too late to seek a newer world.
 Push off, and sitting well in order smite
 The sounding furrows; for my purpose holds
 To sail beyond the sunset, and the baths
 Of all the western stars, until I die."

:: :: :: ::

"Not once or twice in our fair island-story
 The path of duty was the way to glory.
 He, that ever following her commands,
 On with toil of heart and knees and hands,
 Thro' the long gorge to the far light has won
 His path upward, and prevail'd,
 Shall find the toppling crags of Duty scaled
 Are close upon the shining table-lands
 To which our God Himself is moon and sun."

—Tennyson.

Affectionately,

R. B. Cousins.

EL RANCHO



DR. ROBERT BARTOW COUSINS

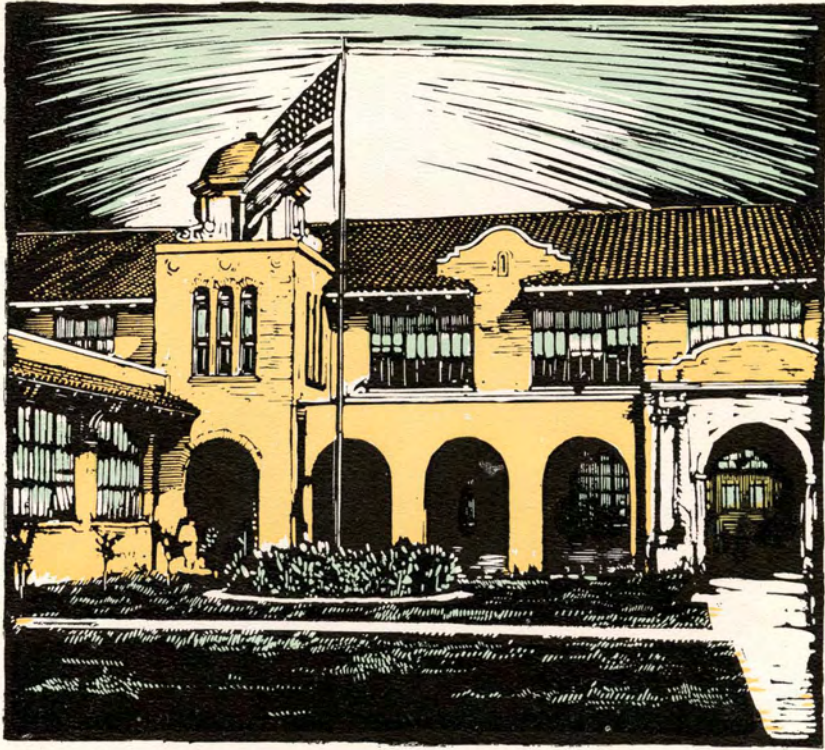
1000110, 27th

EL RANCHO



MISS LILA BAUGH
Dean of Women

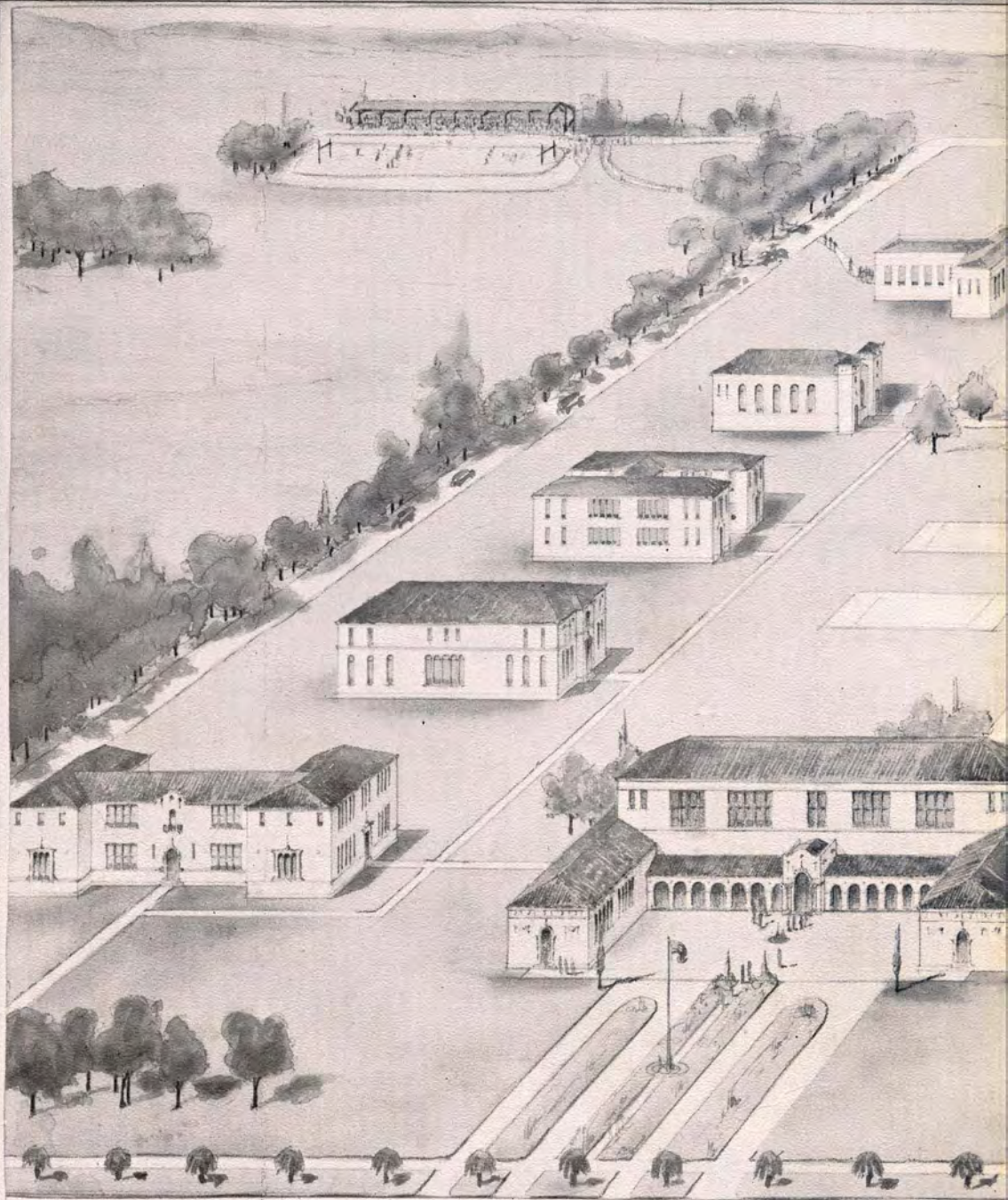
EL RANCHO



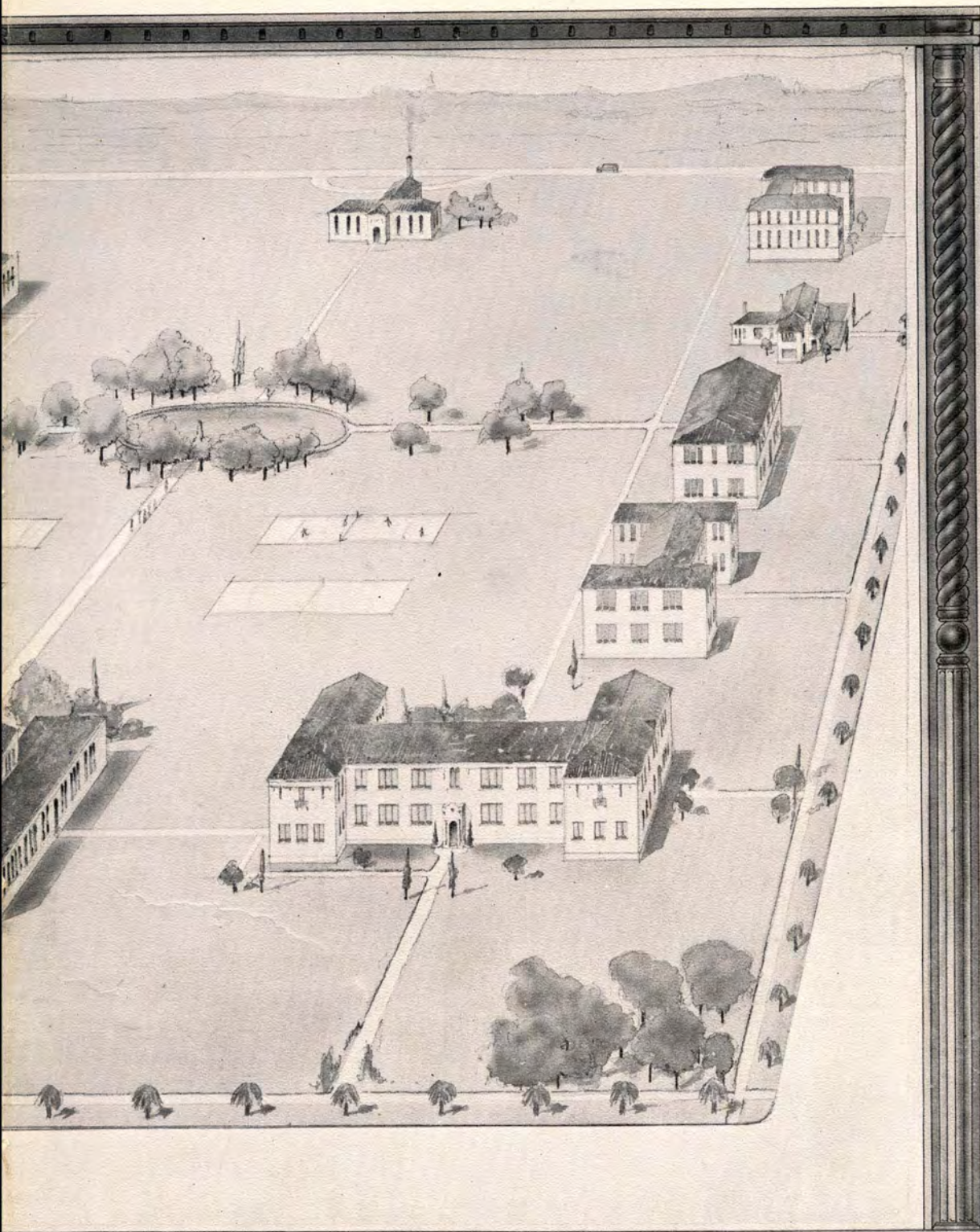
THE COLLEGE



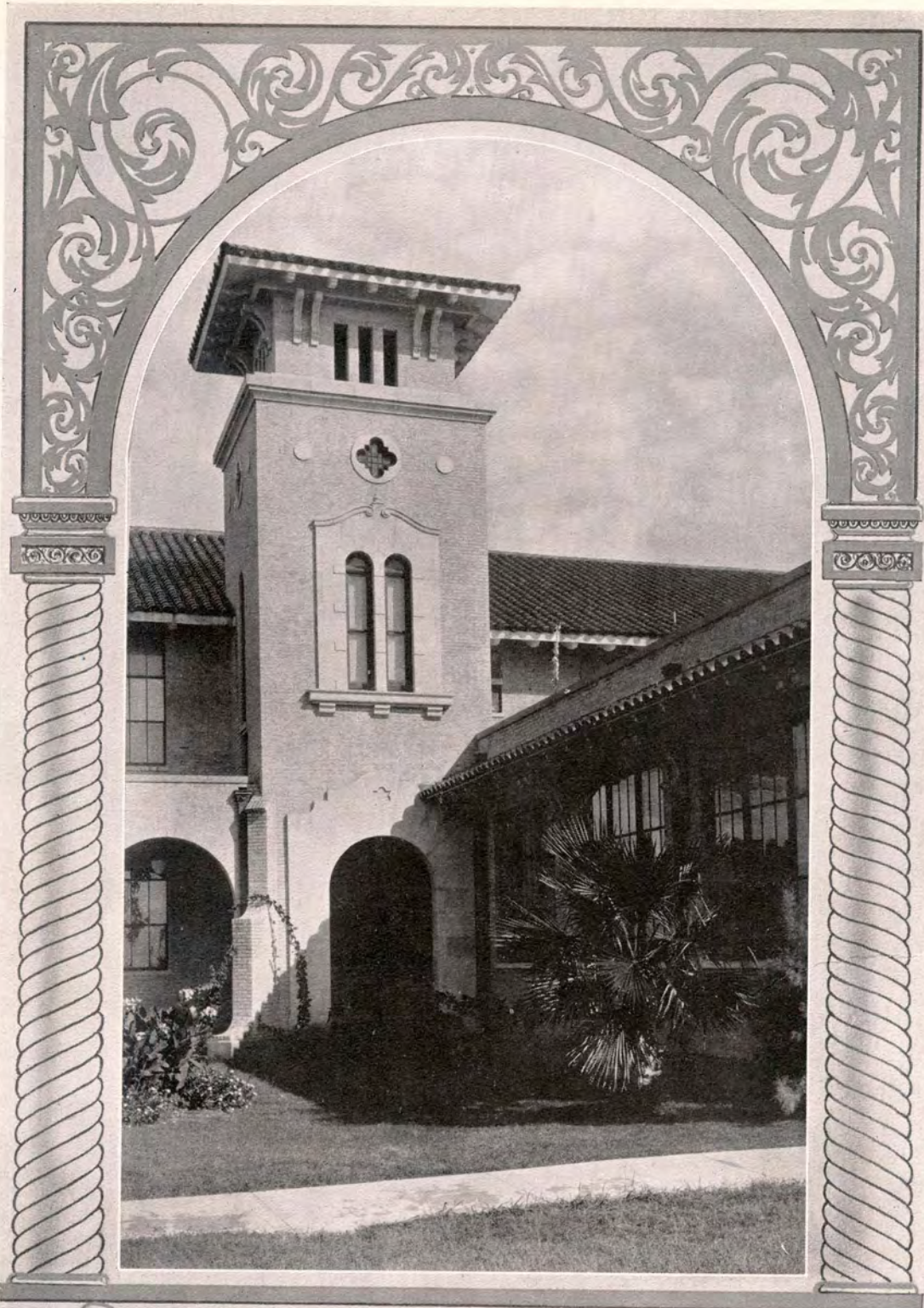
"President's Home"



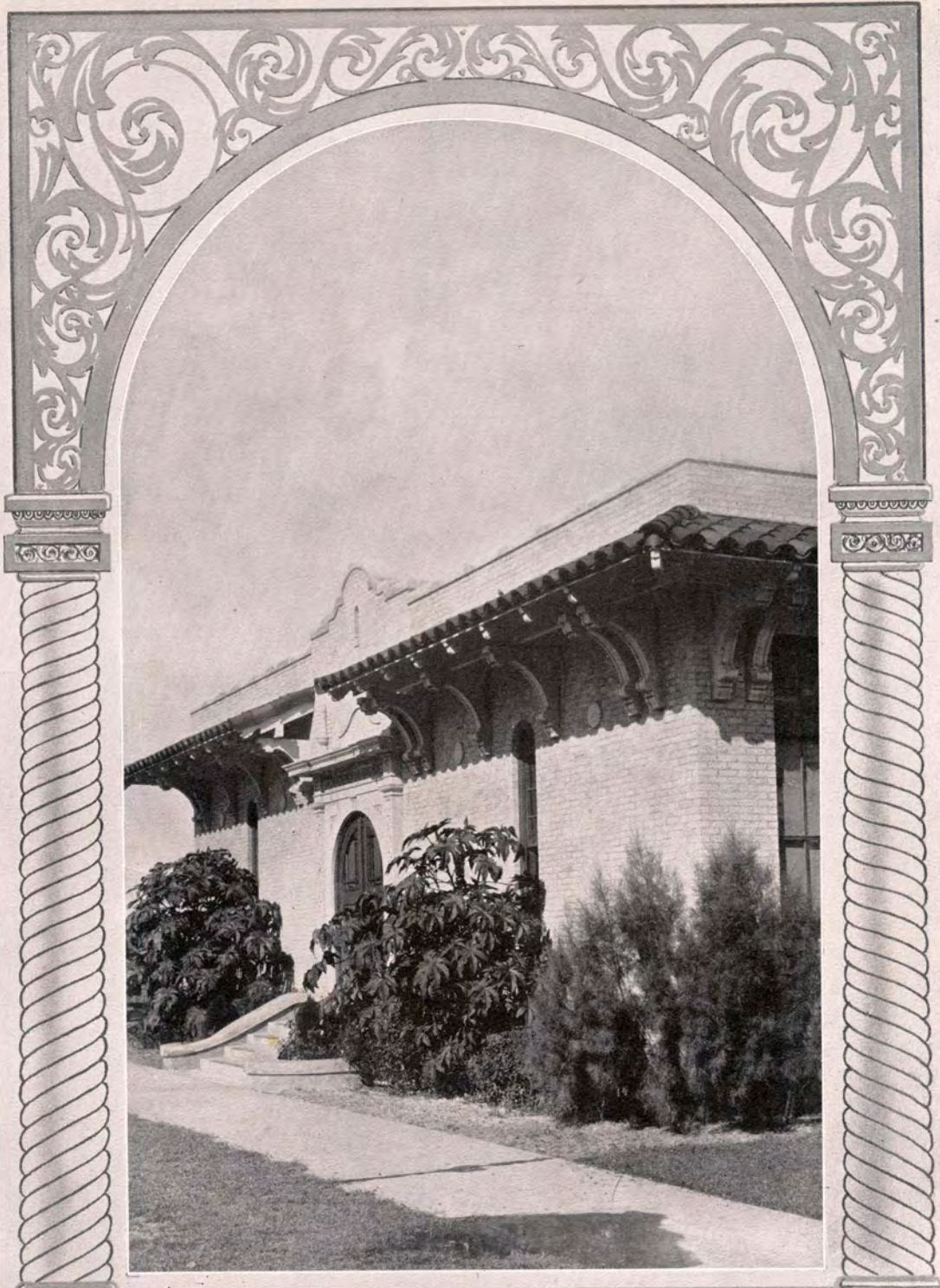
Plan of Campus - South T



Texas State Teachers College



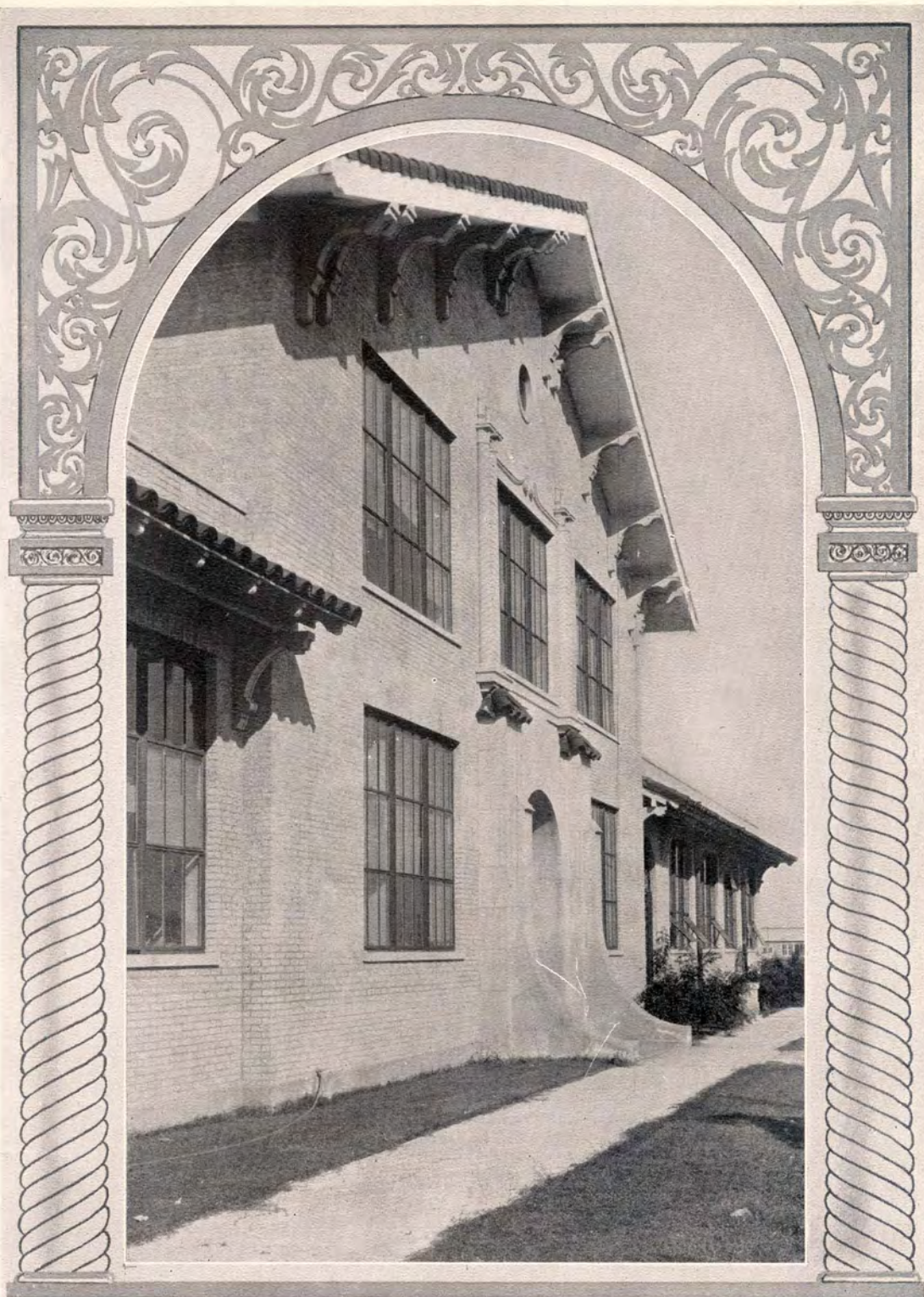
"East Wing"



"The Library"



"The Court"



"East Entrance"



"On Caesar Creep"



ADMINISTRATION

The Board of Control

H. H. Harrington, Chairman Waco, Texas
 S. M. Ramsey, Secretary Austin, Texas
 R. B. Walthall San Antonio, Texas
 R. I. Tennant Temple, Texas

Alma Mater

(Tune: "The Lord is Great")

Above Thy gates we print our fond devotion
 Of love for thee, our S. T. C.
 With pure untarnished gold.
 With joyful song ecstatic in its motion
 We praises sing and honor bring
 To Alma Mater's door.

From Freshman to Senior thy hold is true and glorious,
 Resound aloud thy praise from shore to shore,
 Create in thee a spirit e'er victorious,
 For well equipped, thy parenthood
 Can guide us from afar.

O Blue and Gold, South Texas pride,
 Announce thy pow'r, whole multitudes awakening.
 The news pour fourth to distant land or nation
 That in the South we've pow'r in Education.

O Blue and Gold, South Texas pride,
 Command and we obey in adoration.
 This tribute keep while Fortune smiles above thee,
 In majesty reign peacefully, thy future is assured.
HAIL, ALMA MATER!

—Francis Beaver, '27.

EL RANCHO



M. O. Flowers
President
Lockhart



H. A. Turner
Secretary
Austin



A. B. Mayhew
Uvalde



Henry S. Paulus
Yoakum



W. Z. Hayes
Dallas



J. D. Jackson
Alpine



A. B. Martin
Plainview



W. H. Warren, B.A.
Agriculture



Leora McNess, M.A.
Art



Margaret Neely, B.A.
Art



J. R. Manning, M.A.
Business Administration



R. E. May
Business Manager



Miss Lila Baugh, B.A.
Education



W. E. Sawyer, M.A.
Education



J. H. Gregory, B.A.
Education



Mamie S. Brown, M.A.
Education

EL RANCHO



W. A. Francis, M.A.
English



Jennie L. Splawn, M.A.
English



Frances Alexander M.A.
English



Mary V. Stewart, B.A.
Expression; Phys. Ed.



Jeff. D. Smith, B. A.
French



Mattie B. McLeod
Latin



Helen M. Hunnicutt, M.A.
Spanish



H. H. Williams, B.S.
Geography



J. E. Conner, M.A.
History



May H. Dickens, M.A.
History



L. F. Connel, M.A.
Economics



Leloise Davis, M.S.
Home Economics



Hugh Porter, M.A.
Mathematics



Harper Allen, M.A.
Physics



Amos H. Engle, B.A.
Music



Marian E. Wood, B.Mus.
Music



Lillian V. Wheat
Accompanist



Clyde T. Reed, M.S.
Biology



John L. Nierman, Ph.D.
Chemistry



Lewis J. Smith, B.S.
Physical Education



J. L. Sinclair, M.A.
Science



Ann Kirven
Librarian



Ellen Douglas May, M.A.
English



Leona Hoop
Secretary to President

To Our Alma Mater

Hail, S. T. C. our Alma Mater,
With lofty thoughts inspired;
Once you were but a dreamer's daughter,
Pensive 'till that dream was fired.
You gleamed and glowed and smouldered darkly,
Then suddenly you burst in flame;
Soon idle thoughts became true visions
And Alma Mater got her name.

Now with your portals wide and shaded
And Beauty sculptored all around,
You've all the Health and Wealth that's needed
Encampussed on the verdant ground.
Oh, S. T. C. be proud and joyous,
And ever keep your semblance new
For we will sing of Alma Mater,
Hail to thee, our Gold and Blue!

—Francis Beaver, '27.

The South Texas State Teachers College

Kingsville, Texas

First Commencement Occasion

May 29th, 30th, 31st, 1926

College Forum

Saturday, May 29—9:30 a. m.: Class Day.

8: p. m.: President's Reception to Candidates for Certificates, Faculty and Visitors.

Sunday, May 30—10:30 a. m.: Commencement Sunday Services, Dr. W. L. Barr, Preacher.

Monday, May 31—10:30 a. m.: Commencement Day, Honorable Claude Pollard, Speaker. Delivery of Certificates and Diplomas.

:: :: ::

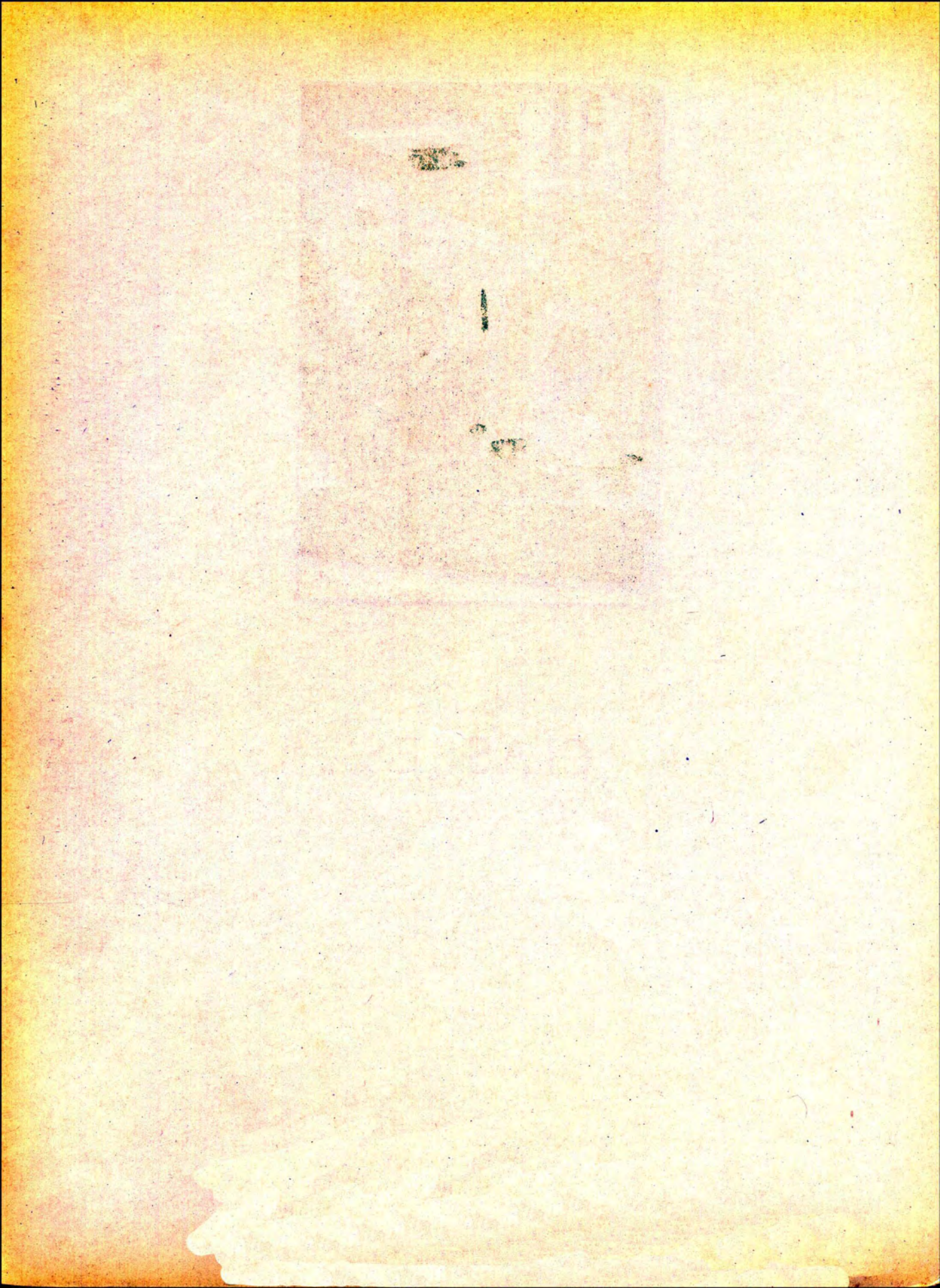
Second Commencement Occasion

Sunday, August 22—10:00 a. m.: Sermon, Rev. E. E. Dawson.

Tuesday, August 26—8:00 p. m. Address, Honorable R. L. Bobbitt. Delivery of Certificates and Diplomas.



CLASSES





SENIORS



Melvin B. Weller

Brownsville

Bachelor of Arts; Bachelor of
Science; English

:: ::

Tyler Military Academy, 1922.

Tyler Military College, 1922-'23;
1923-'24.

South Texas State Teachers Col-
lege, 1925-'26; 1926-'27.

President Junior Class, 1925-'26.

President Senior Class, 1926-'27.

"Class Favorite," 1926-'27.

Football, 1925-'26; 1926-'27.

Basketball, 1925-'26; 1926-'27.

Track, 1925-'26.

(Tune: "The Gold and Blue")

We have taken from the yucca
Her dainty ivory hue,
We have added green of grasses
To it, for our colors new.

Chorus
Oh S. T. C. how we love thee,
We will ever hold you dear;
We must sally forth to meet our fate,
We must bid our friends a fond farewell,
Farewell from the Senior Class.

New standards we are setting
As first from S. T. C.
And we hope you'll follow after
In the days that are to be.

As we wander in the twilight
And the deepening shadows pass,
We are sad to know we'll soon be leaving
The ranks of the Senior Class.



Vaughn Buchanan

Wichita Falls

Bachelor of Arts; Spanish

:: ::

Wichita Falls High School.
 Briar Cliff, N. Y., 1923-'24.
 Wichita Falls Junior College, 1924-'25.
 South Texas State Teachers College, 1925-'26; 1926-'27.
 English Club, History Club, Spanish Club, 1925-'26; 1926-'27.
 Editor-in-Chief, El Rancho, 1925-'26.
 President Spanish Club, 1925-'26.
 Vice-president of Class, 1925-'26; 1926-'27.
 Secretary Spanish Club, 1926-'27.
 "Representative Girl," 1925-'26.

Era Harper

Robstown

Bachelor of Arts; English

:: ::

Robstown High School.
 Southwestern University, 1923-'24; 1924-'25; 1925-'26.
 South Texas State Teachers College, 1926-'27.
 Vice-president of Student Council 1926-'27.



Belva Williams

Robstown
Bachelor of Arts; English

:: ::

Robstown High School, 1922.
Southwestern University, 1922-'23.
Texas University, 1924-'25.
South Texas State Teachers College, 1926-'27.
Assistant Business Manager, South Texan, 1925-'26.
Secretary Senior Class, 1926-'27.
"College Beauty," 1925-'26.

Verna Ross

Robstown
Bachelor of Arts; English

:: ::

Robstown High School, 1924.
Southwestern University, 1924-'25.
South Texas State Teachers College, 1925-'26; 1926-'27.
Editor-in-Chief, El Rancho, 1926-'27.
Secretary, Scholarship Society, 1926-'27.
"College Beauty," 1926-'27.



Frances Beryl Beaver

Kingsville

Bachelor of Arts; English

:: ::

Rio Hondo High School, 1924.
 South West Texas State Teachers
 College, 1924-'25.
 South Texas State Teachers Col-
 lege, 1926-'27.
 Secretary, Sophomore Class, 1925-
 '26.
 Vice-president, Junior Class, Fall
 1926.
 Choral Club, 1926-'27.
 Treble Clef Club, 1926-'27.
 Orchestra, 1925-'26; 1926-'27.
 Valley Club, 1925-'26; 1926-'27.
 Basketball, 1926.
 President, Chang Foo Choo, 1925-
 '26; 1926-'27.
 El Rancho Poet, 1926-'27.

A. D. Harvey

Victoria

Bachelor of Arts; History

:: ::

Victoria High School.
 South West Texas State Teachers
 College, 3 years.
 South Texas State Teachers Col-
 lege, 1925-'26; 1926-'27.
 President, History Club, 1926-'27.
 Position, Principal East Ward
 School, 1924-'25; 1925-'26; 1926-
 '27.
 Critic Teacher of Arithmetic,
 Training School, S.T.S.T.C.



Mrs. J. D. King

Kingsville

Bachelor of Arts; English

:: ::

Waxahachie High School.

Trinity University, 1906-'07; 1907-'08.

South Texas State Teachers College, 1926-'27.

Choral Club, 1926-'27.

English Club, 1926-'27.

Muriel M. Buchanan

Waco

Bachelor of Arts; English

:: ::

San Angelo High School.

Southwestern University, 1922-'23; 1923-'24.

South West Texas State Teachers College, Summer 1924.

South Texas State Teachers College, 1926-'27.

English Club, 1926-'27.

History Club, 1926-'27.



Humberto Gonzalez

Kingsville

Bachelor of Arts; Spanish

:: ::

Tex-Mex, 1920-'23.

Texas A. & M. College, 1924-'25.

South Texas State Teachers College, 1926-'27.

Secretary of class, 1925-'26.

W. H. Korges

Aransas Pass

Bachelor of Arts; History

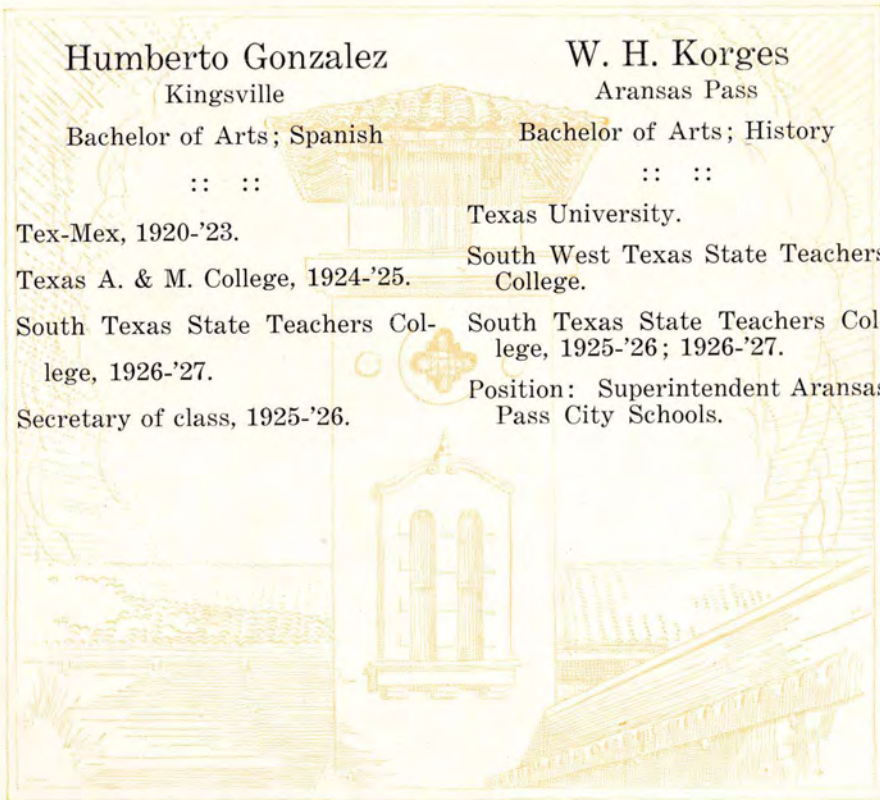
:: ::

Texas University.

South West Texas State Teachers College.

South Texas State Teachers College, 1925-'26; 1926-'27.

Position: Superintendent Aransas Pass City Schools.





Mrs. Ashton Crossley

Kingsville

Bachelor of Arts; English

:: ::

Kingsville High School.

South Western University, 1015-'16.

Southern Methodist University, 1916-'17; Summer, 1918.

Scarrit College of Missouri, 1921-'22.

South Texas State Teachers College, 1925-'26; 1926-'27.

Editor-in-Chief South Texan, 1926-'27.

Position: Critic Teacher, S.T.S.T.C. 1925-'26; 1926-'27.

Isaac W. Eaves

Odem

Bachelor of Science; Mathematics

:: ::

Grapeland High School.

Texas University, 1911-'12; 1912-'13; 1913-'14; 1914-'15.

South Texas State Teachers College, 1926-'27.



Ona Lee Warner

Kingsville

Bachelor of Arts; Art

:: ::

Coolidge High School.

Westminster College, 1923-'24.

Baylor College, Summer 1925.

South Texas State Teachers College, 1925-'26; 1926-'27.

Art Editor, El Rancho, 1926-'27.

Home Economics Club, 1926-'27.

Oretha Cornelius

Kingsville

Bachelor of Arts; English

:: ::

Southwestern University, 1921-'22; 1922-'23.

Kingsville High School.

South Texas State Teachers College, 1925-'26; 1926-'27.

English Club, 1925-'26; 1926-'27.

President, Scholarship Society, 1926-'27.



Albert D. Hensleigh

Blanchard, Iowa

Bachelor of Arts; English

:: ::

Blanchard High School.

Sterling Kansas College, 1912;
1915-'16.

University of Iowa, Summer 1920.

South Texas State Teachers Col-
lege, 1926-'27.

Men's Glee Club, 1926-'27.

Secretary Classical Club, 1926-'27.

Student Manager Tennis, 1926.

Baseball, 1926.

Callie Moore

Tyler

Bachelor of Arts; History

:: ::

Starrville High School.

South West Texas State Teachers
College.

South Texas State Teachers Col-
lege, 1926-'27.



JUNIORS



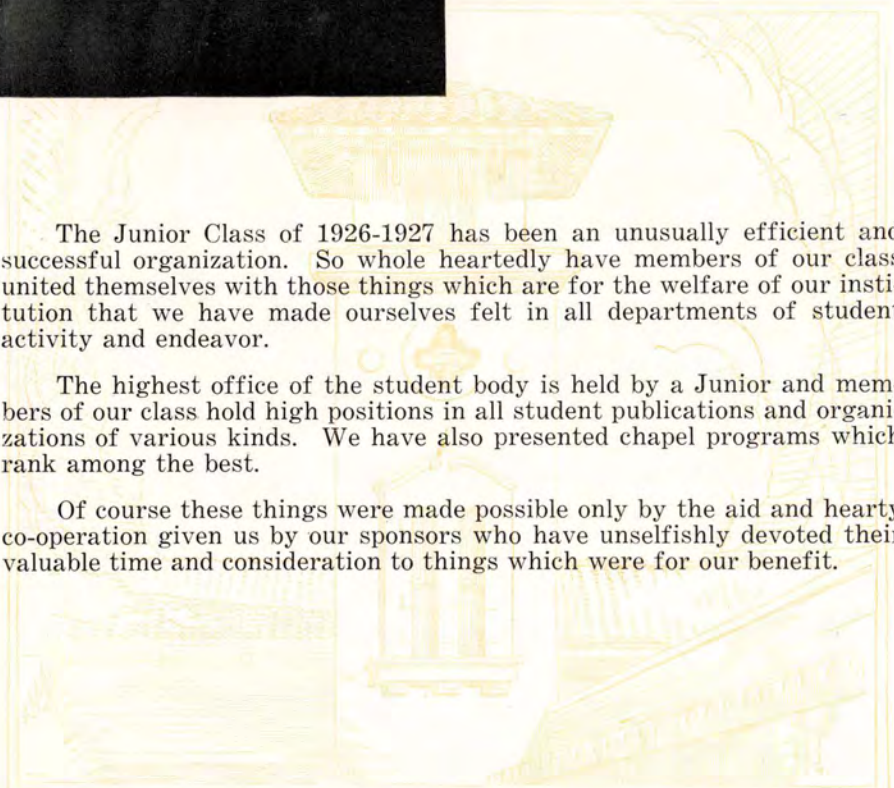
Willa Woodside

Rio Hondo

President

:: ::

“A judicious silence is always better than truth without charity.”



The Junior Class of 1926-1927 has been an unusually efficient and successful organization. So whole heartedly have members of our class united themselves with those things which are for the welfare of our institution that we have made ourselves felt in all departments of student activity and endeavor.

The highest office of the student body is held by a Junior and members of our class hold high positions in all student publications and organizations of various kinds. We have also presented chapel programs which rank among the best.

Of course these things were made possible only by the aid and hearty co-operation given us by our sponsors who have unselfishly devoted their valuable time and consideration to things which were for our benefit.



MRS. MAY R. CHANEY - - - Kingsville

Mrs. Chaney is one of those public spirited persons who has an opinion on everything, and although she is surrounded by "A's" she is far from being a spot of nothing.

IDA MAE EGG - - - Edna

Ida Mae is the blond, with the intelligent smile and the sparkly blue eyes, from Houston and C. I. A. She is an efficient librarian and very dignified—every once in a while.

WILLIE FOSSELMAN - - - Kingsville

Just to look at Willie one might think that she is a personification of the proverbial Texas drawl. Far from it! She is one of the most original, most dependable, and most capable of those of any class.

MARIE ROTH - - - McAllen

"My name is spelled with a double 'o', not 'u'." Marie is very talented along lines musical, and is most unselfish in displaying her abilities for our enjoyment.



SALINA EGG - - - - Edna

Salina is a good class worker—quiet, observant, and sure of her grounds. She whispered once, “to be juniors runs in our family.”

MRS. VELMA FAULK - - - - Kingsville

Mrs. Faulk is an excellent student, a faithful wife, and a pleasing pal. Her many desirable qualities make her the charming mother of the altogether adorable baby Imogene.

VELMA HARGROVE - - - - Kingsville

Velma has one of those congenial personalities that steals into the innermost sanctums of one’s heart like some subtle and enchanting perfume of Araby.

CLOVIS HICKMAN - - - - Kingsville

Although slight of figure and soft of voice, Clovis is a most valuable part of our class and of other organizations, most notable of which is, perhaps, the Treble Clef Club.



PEARL HARPER - - - - Robstown

Graceful, pleasing, and charming, Pearl is everyone's friend. Ever ready to do her part, she has been a most efficient member of the junior social committee.

WALTER H. LeCOMPTE - - - - Kingsville

Besides being the President of the Student Body, Mr. LeCompte makes the wheels of the South Texan go 'round. We are very, very proud of him.

MRS. ETHEL MAYFIELD - - - - Kingsville

"I profess not talking, only this: Let each man do his best," is a fitting bit of philosophy for Ethel.

FRANK WARNER - - - - Kingsville

One junior who achieved distinction in the field of athletics. Also he is the possessor of a personality which makes him worthy of the title of "most popular athlete."



LETHA AGNEW - - - - Mercedes

Letha plans to be a professor of the natural sciences some day if she doesn't stray off into the field of journalism. She is Associate Editor of the South Texan, and usually signs herself "Sally."

EDITH BOYD - - - - Kingsville

Edith admits that she is bright, she just happens not to know what the teachers ask—but then she is not of blame—we all have that little failing.

MRS. GERTRUDE LAUSTSEN - - - - Kingsville

That she takes things easy we must agree.

DAVID ROBERTS - - - - Kingsville

Although David is quite sheikish looking he belies his looks, for he is a Methodist minister and a very dignified one at that.

EL RANCHO



WARNER

SOPHOMORES

© 1927 Warner Bros. Inc.



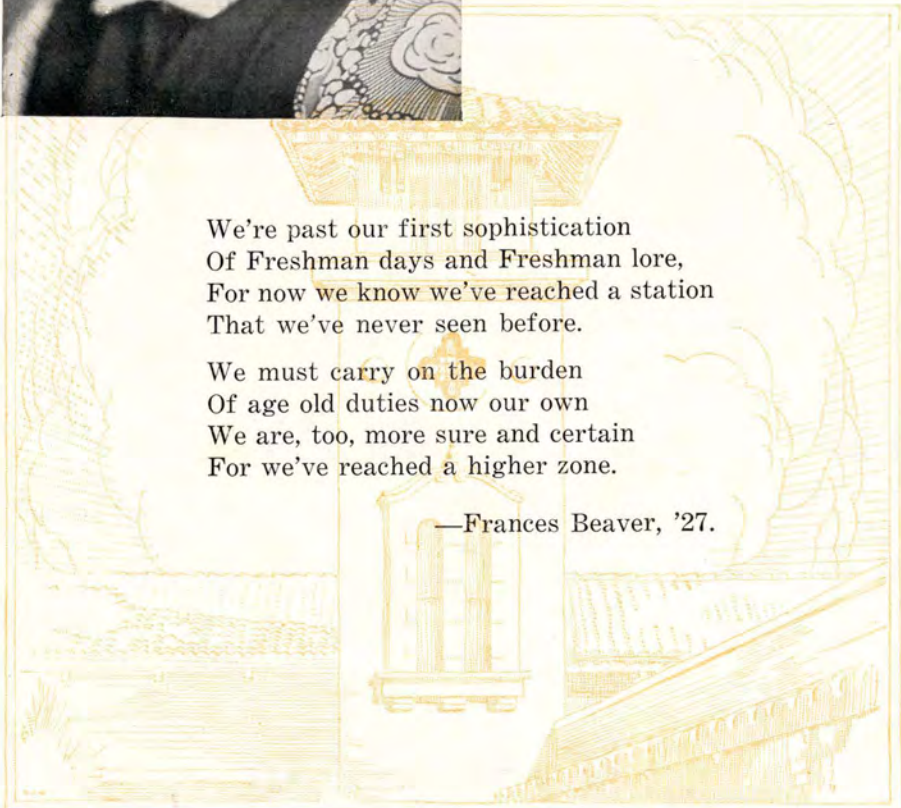
Nadine Brown

Kingsville

President

:: ::

"The gift of fascination, the power
to charm."

A decorative illustration in gold ink, featuring a central building with a prominent window, surrounded by stylized trees and a landscape. The illustration is framed by a decorative border.

We're past our first sophistication
Of Freshman days and Freshman lore,
For now we know we've reached a station
That we've never seen before.

We must carry on the burden
Of age old duties now our own
We are, too, more sure and certain
For we've reached a higher zone.

—Frances Beaver, '27.



ANN PRICE - - - - Kingsville
"The world smiles with her."

ARCHIE DURHAM - - - - Kingsville
"A malady plays on my heart that medicine cannot reach."

LAWRENCE HAMILTON - - - - Sinton
"We must laugh before we are happy, for fear we die before we laugh at all."

RALPH HANSEN - - - - Kingsville
"I have a heart with room for every joy."

J. H. HARRY - - - - Yoakum
"Which of the Angels sing so well in heaven?"

OWEN McKINNEY - - - - Bishop
"In my work and in my fun, I look out for number one."

EL RANCHO



FLORENCE ARNETT - - - Weslaco
 "Will she ever teach school?" That is the question.

ARLINE BANCROFT - - - Kingsville
 "If you dance you must pay the piper."

VERNER CROFFORD - - - Kingsville
 "Looked for fame and love came."

MARGARET CRADDOCK - - - San Benito
 "She comes up smiling."

JUSTUS GARNER - - - Kingsville
 "God's in His heaven, all's right with the world."

LENA HENRICHSON - - - Weslaco
 "Good temper is like a sunny day."



MAURINE HVISTENDAHL - - - Kingsville

"One who is willing to do her part."

EULA KELL - - - - - Aransas Pass

"The mildest in manners are the gentlest of heart."

WILMA McAFERTY - - - LaFeria

"To any class of any kind, she'd be an acquisition,
She's amiable to everyone—it's just her disposition."

ANNICE MARTIN - - - - - Bishop

"Not too serious, not to gay; just a jolly girl in work or play."

OLGA MARTIN - - - - - Bishop

"The best way to have a friend is to be one."

MRS. GLADYS M. MUSGRAVE - - Falfurrias

"The ardent love of a faithful heart shall endure forever and aye."



LOUISE AHRENS - - - - Kingsville

"She takes life as it comes."

EVELYN FISHER - - - - Harlingen

A believer in the philosophy that everything works out for the best.

HENRIOLA GREGG - - - - Kingsville

"After all, the world is a serious problem."

ROY SHELTON - - - - Dripping Springs

"Athletically inclined."

VILA BEE HUNT - - - - Robstown

"A wilderness of sweets."

AMELINE HAMILTON - - - - Bishop

"Gentle of speech, beneficent of mind."

H. J. BRASSFIELD (Special) - - - - Kingsville

"Eager to learn; yet not proud to know."



ELIZABETH PIPKIN - - - - Kingsville

"A maiden fit to be a queen."

PAULINE SNELL - - - - Kingsville

"Kindness is a golden chain by which society is bound together."

HATTIE STOCKLEY - - - - Uvalde

"A true heart worthy of our love."

NINA BETH WOODRUFF - - - - San Antonio

"Live and let live."

NINON YEAGER - - - - Wichita Falls

"Life is full of duty, those who toil grow strong—
Meet the busy hours with a cheerful song."

MAY YEARY - - - - Kingsville

"Be sweet, and your friends are many."

EL RANCHO



EDNA BRYANT - - - Robstown
"A happy soul, but all the way to heaven hath a summer's day."

NEITA JENKINS - - - Corpus Christi
"O let me close my eyes and dream sweet dreams of love."

WELDON SMITH - - - Kingsville
"Full of the joy of life."

RALPH SHELTON - - - Dripping Springs
"What's the use of studying?"

LOIS SHELTON - - - Dripping Springs
"A brunette with a sweet smile."

WILLIE FAE TALBERT - - - Robstown
"Modest in all she does."



BERYL BARBER - - - Kingsville

"Seeking only what is fair,
Sipping only what is sweet."

COGIE DAWSON - - - Kingsville

"Who knows what script those opening eyes have read?"

MRS. ELLA GOFORTH - - - Alice

"Who asks does err, who answers errs; say naught."

OLLIE NELL HARRELL - - - Bishop

"She towers above the rank of common men."

MARTINE HOLBROOK - - - Falfurrias

"Life is what we make it."

MARIE HUTSELL - - - Kingsville

"She is not as bashful as she looks."



GRACE LUTZ - - - - - Corpus Christi
 "I hold our actual knowledge very cheap."

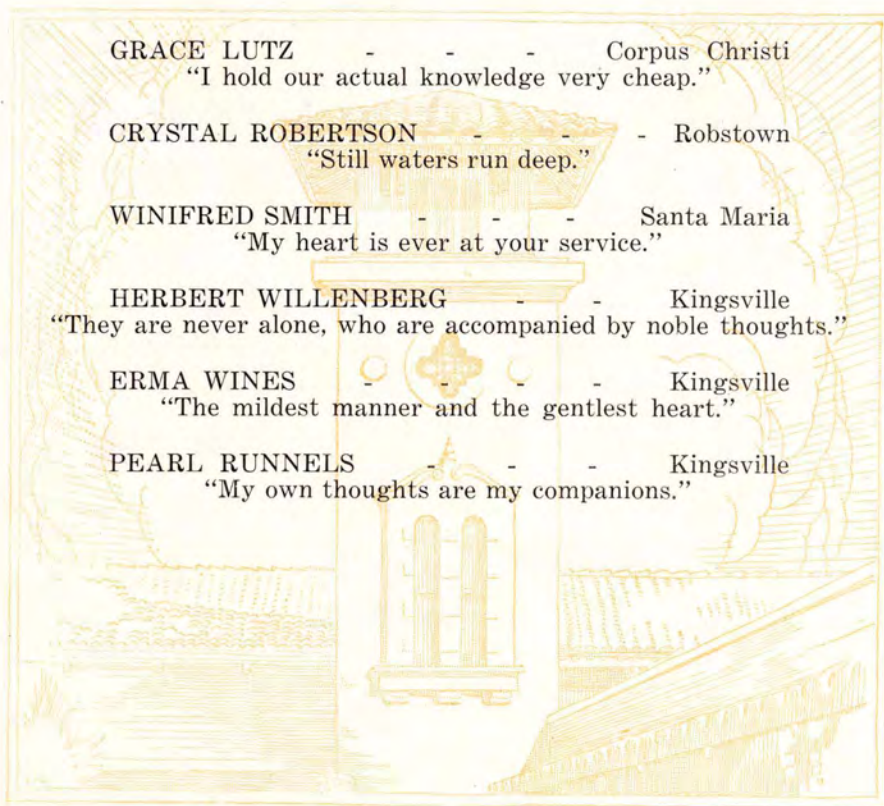
CRYSTAL ROBERTSON - - - - - Robstown
 "Still waters run deep."

WINIFRED SMITH - - - - - Santa Maria
 "My heart is ever at your service."

HERBERT WILLENBERG - - - - - Kingsville
 "They are never alone, who are accompanied by noble thoughts."

ERMA WINES - - - - - Kingsville
 "The mildest manner and the gentlest heart."

PEARL RUNNELS - - - - - Kingsville
 "My own thoughts are my companions."





LETHA AGNEW - - - - Weslaco
 "The essence of refinement with a mind of her own."

BEULAH BARBER - - - - Kingsville
 Her eyes would say that Beulah does muse and quite often.

ALPHA BOSWELL - - - - Bishop
 Some girls talk too much—but Alpha is wise.

WILLIAM GRAHAM - - - - Kingsville
 "Love your neighbor but don't pull down the fence."

RUBY HARREL - - - - Bishop
 To know her is to be helped by her beneficial influence.

OMEGA BOSWELL - - - - Bishop
 "They are rich who have friends."



JACK PARTAIN - - - - - Kingsville
 "Enthusiasm is a genius of sincerity."

CHRYSTLE RIDDLE - - - - - Weslaco
 "Happiness is not perfected until it is shared."

ARNULFO RODRIGUEZ - - - - - San Antonio
 "We build the ladders by which we rise."

META SCHROEDER - - - - - McAllen
 "A wee bit conventional."

WILLIAM SCOTT - - - - - Weslaco
 "To beguile many and to be beguiled by one."

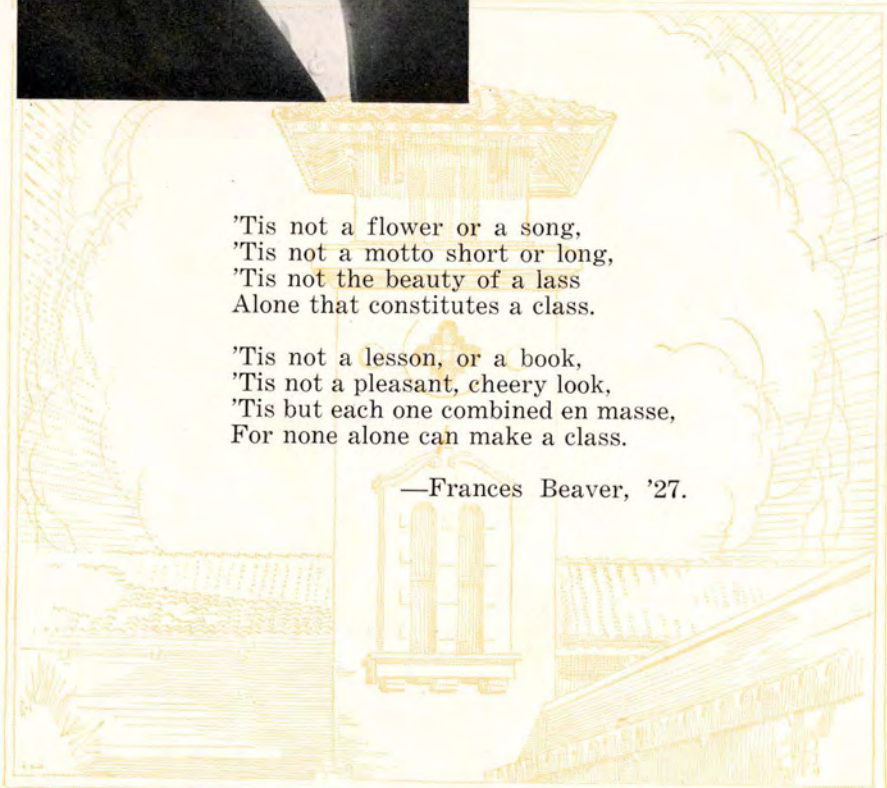
MAMIE BELLE SMITH - - - - - Mercedes
 "A straightforward, efficient girl with eyes that talk."



FRESHMEN



Jessie Smith
Robstown
President



'Tis not a flower or a song,
'Tis not a motto short or long,
'Tis not the beauty of a lass
Alone that constitutes a class.

'Tis not a lesson, or a book,
'Tis not a pleasant, cheery look,
'Tis but each one combined en masse,
For none alone can make a class.

—Frances Beaver, '27.

EL RANCHO



LULA BELLE ADAIR	Kingsville
MARGARET ALLEN	Aransas Pass
JUANITA ALLISON	Robstown
MARION BEAVER	Kingsville
MRS. LYLE BARNETT	Corpus Christi
WALTER BASS	Kingsville
GAZELLE BAUGH	Rio Hondo
LULA ARNETT	Weslaco

EL RANCHO



MRS. LOUISE BENJAMIN	Kingsville
VIVIAN BENNETT	Weslaco
EDNA BROOKS	Mercedes
STYRA BURDITT	Leakey
FLORENCE BURGESS	Weslaco
BETH CAMERON	Kingsville
ERNEST CAMERON	Kenedy
CONSUELO CAVAZOS	Corpus Christi

EL RANCHO

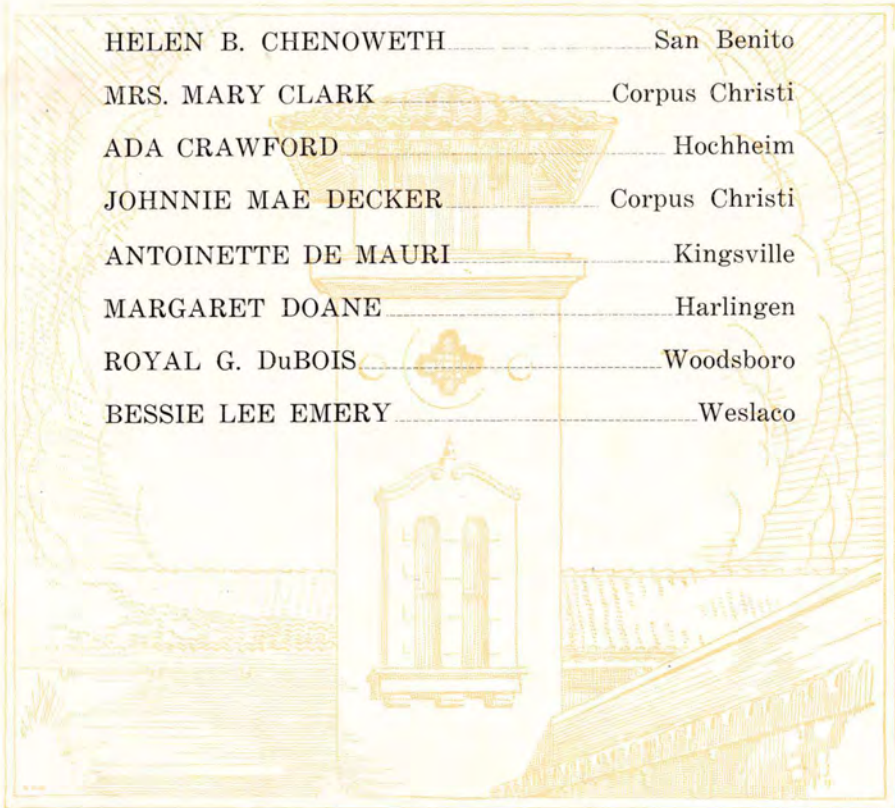


DORA PEARL BROWN	Blanco
ROSE BLUHM	Runge
ELIZABETH ELLIS	Kingsville
MRS. ADELINA GARCIA	Corpus Christi
BERNICE GEORGE	Mercedes
JOSE LONGORIA	Grulla
MARGARET MAHON	Port Lavaca
ELWYN POWELL	Chapman Ranch

EL RANCHO



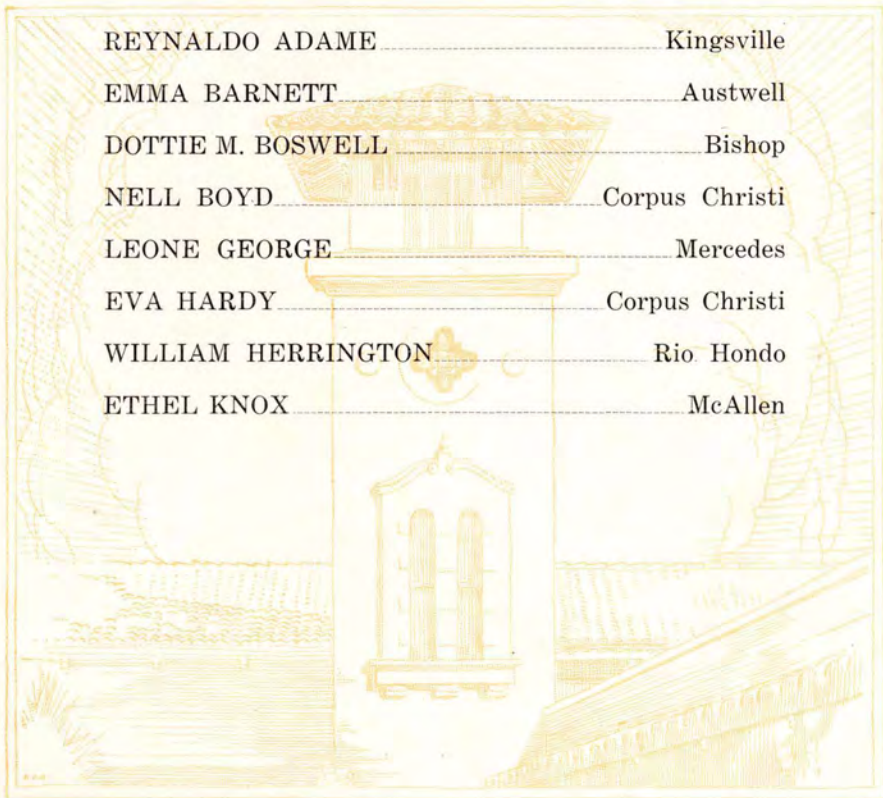
HELEN B. CHENOWETH	San Benito
MRS. MARY CLARK	Corpus Christi
ADA CRAWFORD	Hochheim
JOHNNIE MAE DECKER	Corpus Christi
ANTOINETTE DE MAURI	Kingsville
MARGARET DOANE	Harlingen
ROYAL G. DuBOIS	Woodsboro
BESSIE LEE EMERY	Weslaco



EL RANCHO



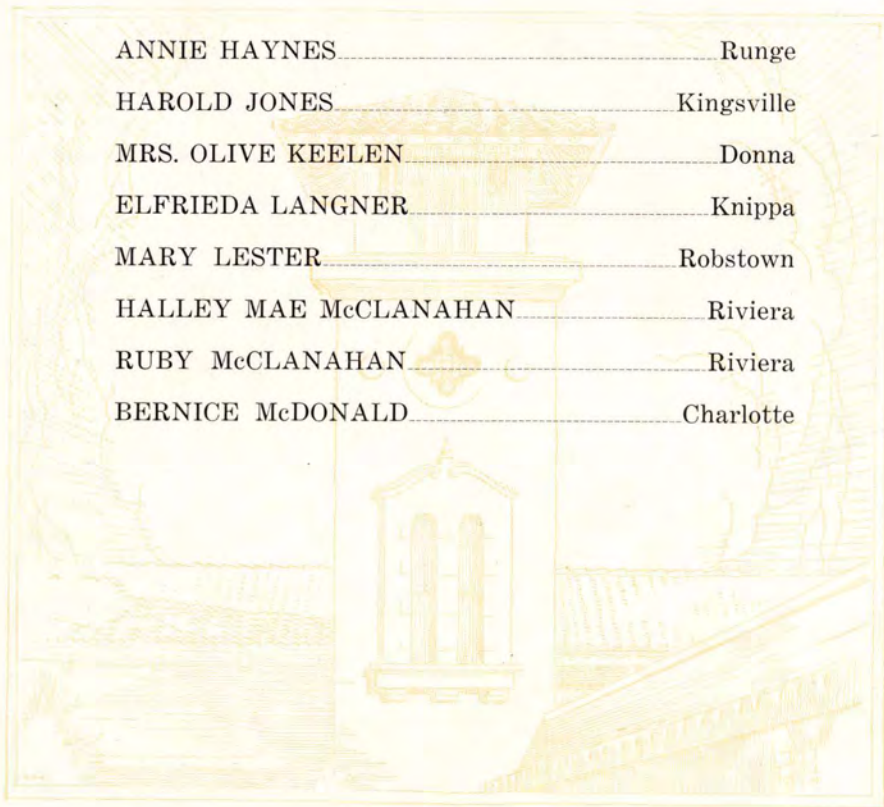
REYNALDO ADAME	Kingsville
EMMA BARNETT	Austwell
DOTTIE M. BOSWELL	Bishop
NELL BOYD	Corpus Christi
LEONE GEORGE	Mercedes
EVA HARDY	Corpus Christi
WILLIAM HERRINGTON	Rio Hondo
ETHEL KNOX	McAllen



EL RANCHO



ANNIE HAYNES	Runge
HAROLD JONES	Kingsville
MRS. OLIVE KEELEN	Donna
ELFRIEDA LANGNER	Knippa
MARY LESTER	Robstown
HALLEY MAE McCLANAHAN	Riviera
RUBY McCLANAHAN	Riviera
BERNICE McDONALD	Charlotte



EL RANCHO



CALLIE RYAN.....	Kenedy
MAMIE SAWYER.....	Agua Dulce
MILDRED SCHABOW.....	Weslaco
ALMA TERVEEN.....	Donna
LAURIE THOMPSON.....	Beeville
LORIS WELHAUSEN.....	Kingsville
HAZEL WHITTON.....	Timpson
BETTY WILLIAMS.....	Kingsville

EL RANCHO

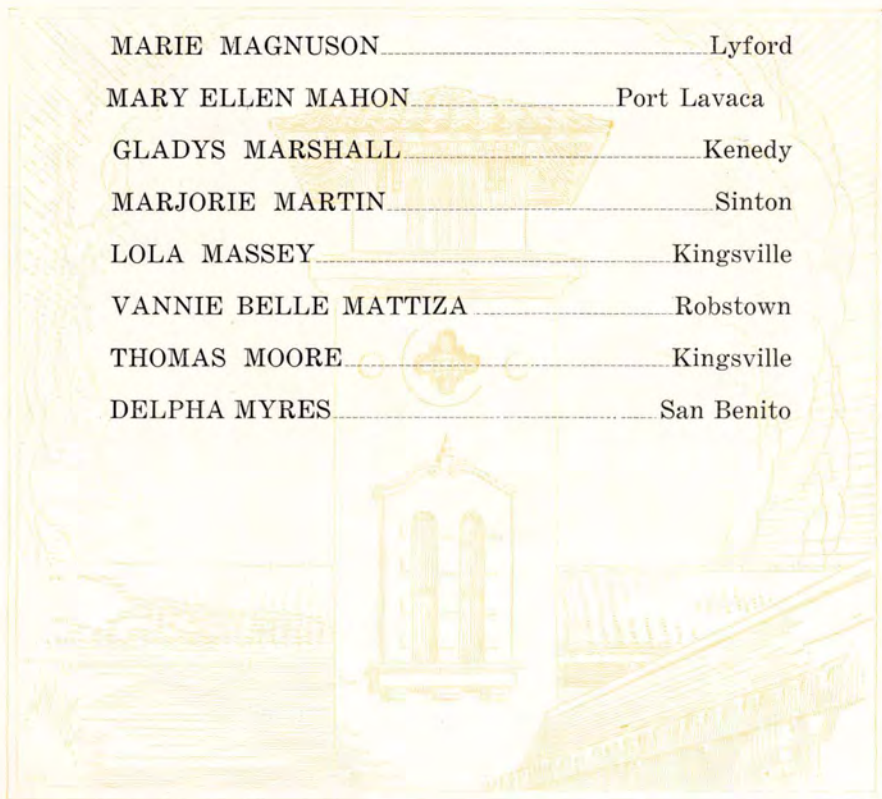


JESSE DELL HARRELL	Bishop
LAURA HARRISON	Riviera
JANE LAUDER	Kingsville
LADY NOLAN	LaFeria
EURA DEAN NEWTON	Bishop
MAURO REYNA	Sam Fordyce
LAURA WATSON	Bishop
DAISY D. WREN	Mathis

EL RANCHO



MARIE MAGNUSON.....	Lyford
MARY ELLEN MAHON.....	Port Lavaca
GLADYS MARSHALL.....	Kenedy
MARJORIE MARTIN.....	Sinton
LOLA MASSEY.....	Kingsville
VANNIE BELLE MATTIZA.....	Robstown
THOMAS MOORE.....	Kingsville
DELPHA MYRES.....	San Benito



EL RANCHO



JUNIA EDD ESTES	Kingsville
CHRISTINE FLEMING	San Benito
LUCILE FRY	Kingsville
GRACE FULLER	Kingsville
WILMA GEORGE	Mercedes
JULIA GONZALES	San Benito
MELBA GROSSE	Runge
OLLIE HANEY	Rio Hondo

EL RANCHO



FLORENCE NORQUEST	Edinburg
VERA NUNLEY	Corpus Christi
MRS. W. D. PEAVY	McFaddin
ALMA PRICE	Kingsville
OPAL ROBBINS	Riviera
RANKIN ROBERTSON	Tenaha
DOROTHY RUNKLE	Edinburg
IMOGENE ROGERS	Mathis

EL RANCHO

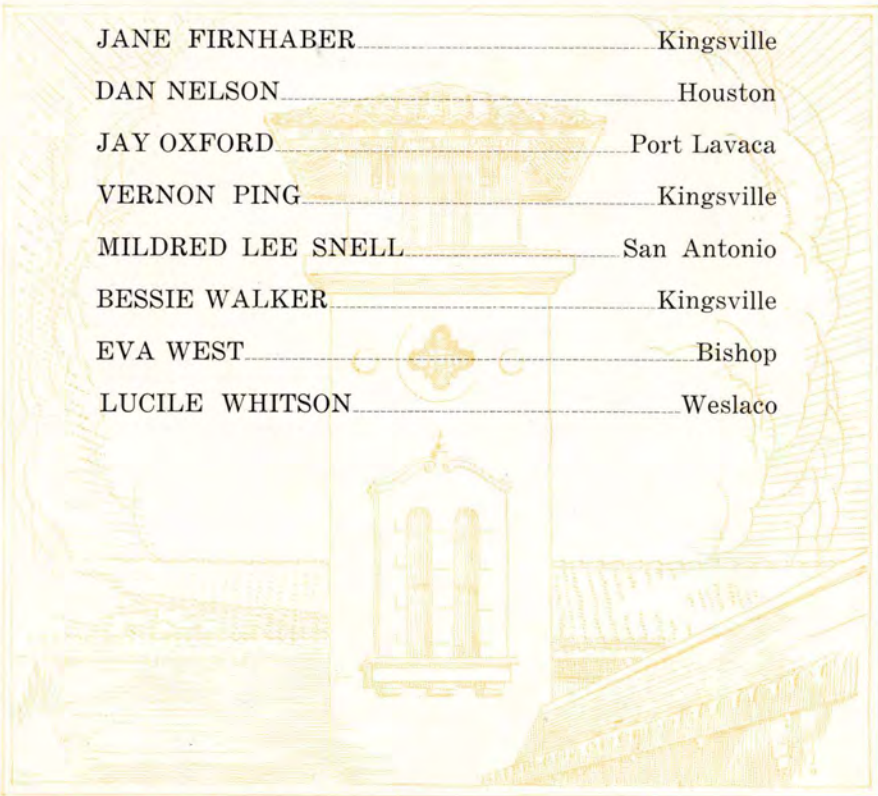


ADDIE BARRETT	McAllen
RAY DAMRON	Mercedes
PAUL FILLA	Kingsville
TONY McELROY	Bishop
KARINE SHULTS	Robstown
DOROTHY SMITH	Kingsville
MADGE WARREN	Kingsville
LORENA WHITE	Ricardo

EL RANCHO



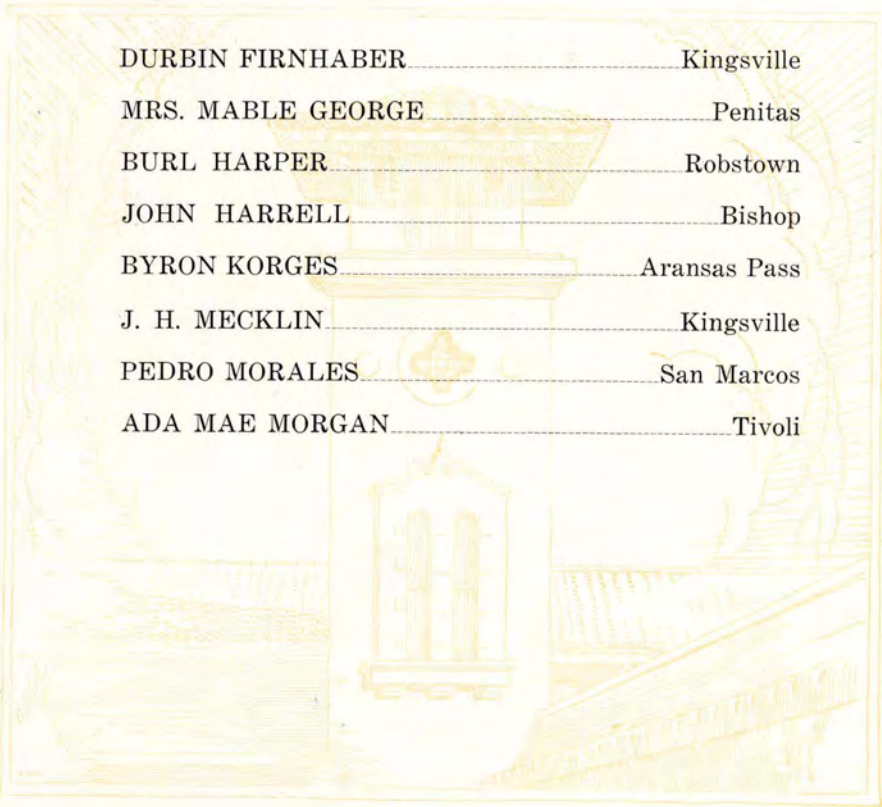
JANE FIRNHABER	Kingsville
DAN NELSON	Houston
JAY OXFORD	Port Lavaca
VERNON PING	Kingsville
MILDRED LEE SNELL	San Antonio
BESSIE WALKER	Kingsville
EVA WEST	Bishop
LUCILE WHITSON	Weslaco



EL RANCHO



DURBIN FIRNHABER.....	Kingsville
MRS. MABLE GEORGE.....	Penitas
BURL HARPER.....	Robstown
JOHN HARRELL.....	Bishop
BYRON KORGES.....	Aransas Pass
J. H. MECKLIN.....	Kingsville
PEDRO MORALES.....	San Marcos
ADA MAE MORGAN.....	Tivoli





SUB-COLLEGE




Lawrence Robbins

Riviera

President

:: ::

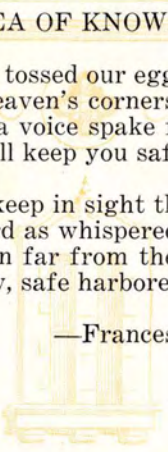


THE SEA OF KNOWLEDGE

The billows tossed our egg shell bark,
From heaven's corners blew the storm—
"Fear not," a voice spake from the dark,
"For I will keep you safe from harm."

"Be sure to keep in sight the goal,"
We heard as whispered on the crest.
We glided in far from the shoals
And now, safe harbored, lie at rest.

—Frances Beaver, '27.



EL RANCHO



MARIE BEDFORD	Agua Dulce
MAURICE BRADFORD	Pettus
MAURINE BRADFORD	Pettus
GEORGIA CLARK	San Antonio
MAUDE DONAHO	Sinton
INEZ MOORE	Pettus
OLLIE NEWTON	Bishop
REBIE ROBBINS	Kingsville
IDA MAE STUTH	Kingsville
JEWEL MAE THOMPSON	Mercedes

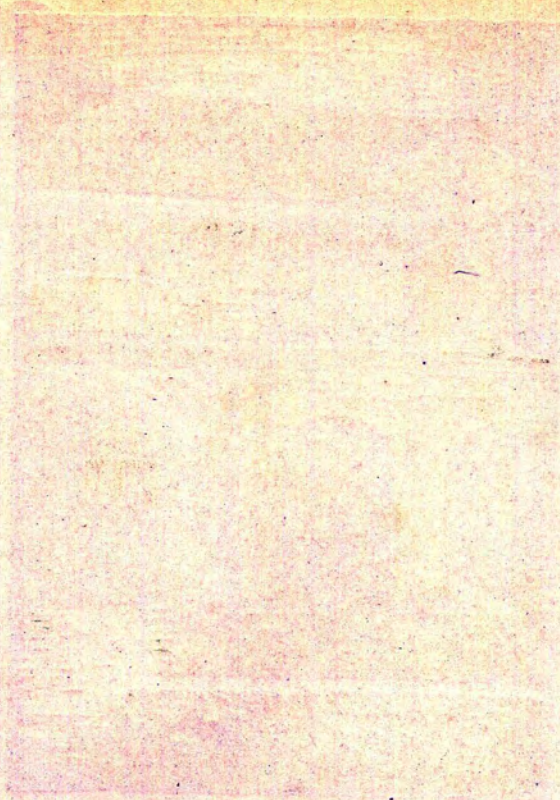
EL RANCHO



ALICE BURROW.....	Chapman Ranch
ELVIRA FELS.....	Ricardo
CLARICE GALLATIN.....	Blessing
RODOLFO DE LA GARZA.....	Penitas
LOTTIE JOHNSON.....	Cuero
A. G. ROGERS, JR.....	Driscoll
OLIVIA ROMIKE.....	Kingsville
LEE WILLENBERG.....	Kingsville
NOMA B. WOODS.....	Riviera



ORGANIZATIONS



CHOLERA TYPHOID



Student Council

W. H. LeCompte	President
Era Harper	Vice President
Beryl Barber	Secretary
Herbert Willenberg	Treasurer
Miss Lila Baugh	Sponsor
Melvin Weller	Pres. Senior Class
Jennie L. Splawn	Sponsor
Willa Woodside	Pres. Junior Class
Frances Alexander	Sponsor
Crystal Robertson	Pres. Sophomore Class
Mr. W. E. Sawyer	Sponsor
Jesse Smith	Pres. Freshman Class
Leora McNess	Sponsor
Lawrence Robbins	Pres. Sub-College Class
Ellen Douglas May	Sponsor



Girls' Chorus

Many standard three-part songs for women's voices are studied, and frequent appearances are made in chapel. The work of the year also includes a Cantata for a Christmas program, and an operetta in the Spring Term.

Personnel

Sopranos

Addie Barrett
Dorothy Boswell
Florence Burgess
Styra Burditt
Edith Boyd
Evelyn Fisher
Henriola Gregg
Lena Henrichson
Maurine Hvistendahl
Blanche King
Ethel Knox
Ann Price
Crystal Robertson

Betty Williams
Willa Woodside
Ninon Yeager

Mezzo-Sopranos

Margaret Allen
Florence Arnett
Margaret Doane
Ollie Haney
Jane Firnhaber
Clovis Hickman
Ethel Mayfield
Ruby McClanahan
Hallie May

Grace Norman
Imogene Rogers
Marie Rooth
Pearl Runnels

Altos

Lula Arnett
Frances Beaver
Beulah Barber
Ida Mae Egg
Clarice Gallatin
Marjorie Martin
Wilma McAferty
Florence Norquest

Marian E. Wood, Accompanist
Amos H. Engle, Director



Top Row (left to right)—Allen, McAferty, Rooth, Knox, Boswell, May, King, Burgess, Fisher, Gregg, Runnels, Norman, Doane.
Second Row (left to right)—Barber, L. Arnett, Martin, Egg, F. Arnett, Henrichson, Barrett, Hvistendahl, Burditt, Yeager, Robertson, Price.
Front Row (left to right)—Norquest, Gallatin, Beaver, Rogers, Firnhaber, Mayfield, Wood (accompanist), Engle (Director), Hickman, Haney, Woodside, Boyd, Williams.

Treble Clef Club

This organization has already established itself as an outstanding factor in the cause of music for South Texas. The membership is limited and selected after competitive tryouts. An entire evening's program is prepared, and the club makes two out-of-town trips each season. A home concert is also given.

Personnel

First Sopranos

Willa Woodside
Ann Price
Crystal Robertson
Addie Barrett

Second Sopranos

Marie Rooth
Clovis Hickman
Jane Firnhaber
Ethel Mayfield

Altos

Beulah Barber
Wilma McAferty
Frances Beaver
Florence Norquest

Amos H. Engle, Director
Marian E. Wood, Accompanist



Barrett, Norquest, Barber, Firnhaber, Beaver, Price, McAferty, Mayfield.
Hickman, Wood (accompanist), Rooth, Robertson, Engle (director), Woodside.



Men's Glee Club

The club made a number of chapel appearances, and a public program was given one evening in the Spring term. Quartets and double quartets went to points near Kingsville to assist in programs. It is planned that next year the club will make an extended tour.

Personnel

First Tenors

Palmer Williams
 Arnulfo Rodriguez
 William Scott
 Mauro Reyna

Baritones

Harper Allen
 Homer Ferguson
 Jack Partain
 Billie Graham
 Albert Hensleigh

Second Tenors

David Roberts
 Caleb Glazener
 Tom Moore
 Herbert Willenberg

Basses

Robert Ferguson
 Rankin Robertson
 Justus Garner
 Jose de la Vina

A. H. Engle, Director
 Ethel Mayfield, Accompanist



Rodriguez, H. Ferguson, Moore, Reyna, de la Vina, Williams.
 R. Ferguson, Willenberg, Hensleigh, Garner, Scott, Partain, Roberts.
 Robertson, Allen, Mayfield (Accompanist), Engle director), Graham, Glazener.

Orchestra

The orchestra came before the student body in several chapel appearances, accompanied the Christmas Cantata by the Girls' Chorus, and played a Spring Concert. The instrumentation was above the average for an organization of so limited numbers in the second year of the school's life, and the orchestra has become an important part in the musical life of S. T. S. T. C.

Instrumentation

First Violins
Mrs. Kraumpitz
Marjorie Martin

Second Violins
Margaret House
Arnet Clampitt

Viola
Ethel Knox

Cello
Mrs. Reed

Flute
Justus Garner

Clarinets
Herbert Willenberg
Ernest Cannon

E-flat Alto Horn
Frances Beaver

Trombone
Billie Graham

B-flat Tenor Saxophone
Jack Partain

Miss Marian Wood, Director
Marie Rooth, Accompanist



(Left to right)—Margaret House, Arnet Clampitt, Mrs. W. O. Kraumpitz, Ethel Knox, Marjorie Martin, Mrs. Clyde Reed, Marie Rooth, Miss Wood (director), Justus Garner, Frances Beaver, Ernest Cannon, Billie Graham, Herbert Willenberg, Jack Partain.

History Club

A. D. Harvey	President
Helen Chenoweth	Vice President
Vaughn Buchanan	Secretary
Jay Oxford	Treasurer

The Robert J. Kleberg History Club has had for its major objective during the past year, the development of a museum. It is felt that a respectable beginning has been made.

Outstanding examples in the collection are: a spinning wheel, loom, and dress, the cloth for which was made on the wheel and loom, during the Civil War; a gun used in the Battle of San Jacinto; a Mexican land grant issued in 1827; a San Jacinto Head Right; the Commission of Robert Kleberg as Land Commissioner of Austin County in 1837, signed by Sam Houston; numerous books published before 1825; specimens of Spanish, French, and Confederate money; Civil War, Spanish-American War, and World War equipment and records.

Here these priceless relics are safe from fire and flood, and exhibited in th cases, they are stimulating additional gifts, and an intelligent interest in the past.

Mr. Conner (Sponsor)
 Margaret Allen
 Lula Arnett
 Florence Arnett
 Vivian Bennett
 Horace Bennett

Edith Boyd
 Vaughn Buchanan
 William Conner
 Helen Chenoweth
 Mrs. Velma Faulk
 Willie Fosselman
 Grace Fuller



History Club

To the Memory
:: of ::
MERLE MANNING
Charter Member

Mrs. May H. Dickens (Sponsor)
Mrs. Mable George
Justus Garner
Clovis Hickman
Miss Ann Kirven
Mr. J. R. Manning

Jay Oxford
Elwyn Powell
Opal Robbins
Olivia Romike
Callie Ryan
William Scott
Bessie Walker





The Dora K. Cousins English Club

Henriola Gregg	President
Wilma McAferty	Vice President
Elizabeth Pipkin	Secretary
Erma Wines	Treasurer

The Dora K. Cousins English Club has spent a profitable year, since the previous issue of El Rancho, in the study of the drama and the short story. The study of the drama was undertaken during the summer months and was confined to a review of Ibsen's plays. With the beginning of the Fall term the Club decided upon a short story course for the year. A number of interesting programs developed out of this work which were further enhanced by some very enjoyable musical and dramatic numbers. One meeting was given over to a debate between members of the class in debating.

On several occasions the Club was very delightfully entertained at the homes of Dr. and Mr.s Cousins and Professor and Mrs. W. A. Francis.

Henriola Gregg
Helen Chenoweth
Verner Crofford
Willie Fosselman
Mr. Francis (Sponsor)
Clovis Hickman

Jack Partain
Herbert Willenberg
Erma Wines
Nina Beth Woodruff
Ninon Yeager
Jeanne L. Splawn
Francis Alexander



The Dora K. Cousins English Club

As a constructive feature of its work as a college organization this year the Club joined with the editorial staff of The South Texan in sponsoring a literary contest which was opened to the entire student body. The Club awarded the prizes to the winners and was active in promoting interest in the competition.

The Club is looking forward to becoming one of the outstanding constructive organizations of S. T. S. T. C.

Since the membership is limited to students who make a high average in class work, we have had only those who believe, "A mind's height is measured by the shade it casts," and are willing to work for the accomplishments that will glorify the Dora K. Cousins English Club to those who shall perpetuate it.

Elizabeth Pipkin
Mrs. Peavy
Mrs. Velma Faulk
Arline Bancroft
Christina Fleming

Maurine Hvistendahl
Ralph Hansen
Edith Boyd
Walter H. LeCompte
Vaughn Buchanan
David Roberts



Classical Club

Mrs May R. Chaney	President
A. D. Hensleigh	Secretary-Treasurer
Miss McLeod	Sponsor
Miss Stewart	Sponsor
Mr. Williams	Sponsor

The Club met on the first and third Thursdays of each month and alternated classical and geographical programs that proved of great interest to all the members. Skill in the art of story telling was developed by a friendly contest in relating myths, stories, and jokes. The geographical programs were arranged by Mr. Williams whose realistic travel talks were highly enjoyed. Miss McLeod rendered valuable aid at every meeting. We gave a Latin skit in chapel under the direction of Miss Stewart who also gave assistance in the story telling.

Among the pleasant social events of the year were the club banquet in the Home Economics dining room and a social given by Miss McLeod at her home. On each occasion there was a suitable program.

We are presenting the college with a painting to be hung in the main corridor.

Miss Mattie McLeod (Sponsor)
Letha Agnew
Arline Bancroft
Nell Boyd
Edna Bryant
Styra Burdett

Mrs. May R. Chaney
Elvira Fels
Justus Garner
Henriola Gregg
Ruby Alta Harrell

Jack Partain
Mamie Smith
Annie Haynes
A. D. Hensleigh
Mrs. Gertrude Laustsen



La Giralda Spanish Club

Arnulfo Rodriguez..... President
 Elizabeth Pipkin..... Vice President
 Vaughn Buchanan..... Secretary-Treasurer
 Mrs. Adelina Garcia..... Reporter

Motto: Siempre Adelante
 Flower: Margaritas

The first meeting of the Elena Mar Spanish Club was devoted to election of officers and appointment of committees. A committee was appointed to decide upon a new name for the club, and "La Giralda" was decided upon.

The programs and business sessions are conducted in Spanish. The purpose of this is twofold: To enable the members to put their knowledge of the language to a practical use, and to give them a wider appreciation of Spanish literature.

Miss Helen M. Hunnicut (Sponsor)
 Arnulfo Rodriguez
 Elizabeth Pipkin
 Vaughn Buchanan

Mrs. Adelina Garcia
 Consuelo Cavazos
 Julia Gonzales
 Mouro Reyna



Valley Club

Bill Herrington..... President
 Bess Emery..... Vice President
 Lena Henrichson..... Secretary-Treasurer

The Valley Club was organized by Valley students who felt the need of a club to perpetuate the well known Valley spirit. The membership is 100 per cent of all students from that section of the state, and the co-operative spirit of the club has been felt in various phases of college life.

Mrs. May Dickens
 (Sponsor)
 Letha Agnew
 Florence Arnett
 Lula Arnett
 Gazelle Baugh
 Marion Beaver

Vivian Bennett
 Horace Bennett
 Edna Brooks
 Helen Chenoweth
 Margaret Craddock
 Ray Damron
 Bess Emery

Christina Fleming
 Leone George
 Bernice George
 Wilma George
 Mrs. Mable George
 Julia Gonzales
 Ollie Haynie



Valley Club

Three fold is our purpose here:
 To serve Valley students from year to year,
 To make them love the College, too,
 And make the Valley known to you.

Lena Henrichson
 Bill Herrington
 Ann Kirven (Sponsor)
 Ethel Knox
 Wilma McAferty
 Delpha Myers

Lady Nolan
 Florence Norquest
 Marie Rooth
 Dorothy Runkle
 Mildred Schabow

Meta Schroeder
 William Scott
 Maymie Smith
 Winifred Smith
 Jewel May Thompson
 Alma Terveen
 Herbert Willenberg
 Willa Woodside





Riveria Club

Pearl Runnels..... President

Noma Woods..... Secretary-Treasurer

Membership

Summer 1926

Alberta Cockrell
Clyde Denham
Bessie Denham
Euna Gardner
Hilma Garner
P. S. Garner

Maurice Hollers
Barbara May
Lawrence May
Mrs. Jeff Runnels
Katherine Swain
Gladys Tomlinson



Pearl Runnels
Ruby McClannahan

Rebie Robbins
Hallie Mae McClannahan

Laurence Robbins
Noma Woods

Opal Robbins



Chang Foo Choo

Frances Beaver..... President
 Louise Ahrens..... Secretary-Treasurer

The Chang Foo Choo Club, picked by vote of previous members, is limited to fifteen girls and selected mainly for pleasing personality. The purpose is to create a pleasant social atmosphere among congenial girls. The chapel programs given by the Club have always been among the unique and well received; and originality is the chief characteristic which has made this one of the most interesting clubs in school.



Frances Beaver
 Louise Ahrens
 Arline Bancroft
 Addie Barrett
 Edith Boyd

Dora Pearl Brown
 Elizabeth Ellis
 Christina Fleming

Lena Henrichson
 Tony McElroy
 Crystal Robertson
 Marie Rooth





B. S. U. Council

Presidents

Herbert Willenberg..... Fall Term
 Jack Partain..... Spring Term

First iVce Presidents

Cogie Dawson..... Fall Term
 Verner Crofford..... Fall Term
 Henriola Gregg..... Spring Term
 Walter Bass..... Spring Term

Second Vice Presidents

Bess Emery..... Fall Term

Recording Secretaries

Lena Henrichson..... Fall Term
 Imogene Rogers..... Spring Term

Treasurers

Jack Partain..... Fall Term
 Elwyn Powell..... Spring Term

Corresponding Secretaries

Vera Nunley..... Fall Term

Social Chairmen

Jesse Smith..... Fall Term
 Herbert Willenberg..... Spring Term

Cartoonist

Nell Boyd..... Fall and Spring Terms

Reporters

Carroll Hornburg..... Spring Term

Student Secretary

Nathile McKay..... Fall Term

B. Y. P. U. Director

Opal Adair..... Fall and Spring Terms

Faculty Representatives

Miss Jeanne L. Splawn
 Mr. J. R. Manning

Hostess

Mrs. W. B. Splawn

Herbert Willenberg
 Verner Crofford
 Cogie Dawson
 Jack Partain

Bess Emery
 Lena Henrichson
 Vera Nunley

Jesse Smith
 Nell Boyd
 Nathile McKay
 J. R. Manning
 Opal Adair





South Texan Staff

Eugenia Baird Crossley.....	Editor-in-Chief
Letha Agnew.....	Associate Editor
W. H. LeCompte.....	Managing Editor
Vivian Bennett.....	News Editor
Florence Norquest.....	News Editor
Maurine Hvistendahl.....	Feature Editor
Henriola Gregg.....	Society Editor
A. D. Hensleigh.....	Sport Editor
Archie D. Durham.....	Business Manager
Robert Wilson.....	Column Editor

Letha Agnew
 W. H. LeCompte
 Vivian Bennett
 Florence Norquest

Maurine Hvistendahl
 Henriola Gregg
 A. D. Hensleigh
 Archie D. Durham



Ode to a Faculty Member

I walk in rev'rence by her side,
And wonder fills my heart;
For peace and love in her abide;
God gave her such a part.

She speaks—ah, hush! I'm wonder-filled
Some wisdom she'll impart;
For when she talks my heart is stilled:
She speaks of Life and Art.

—Pearl Runnels, '28.

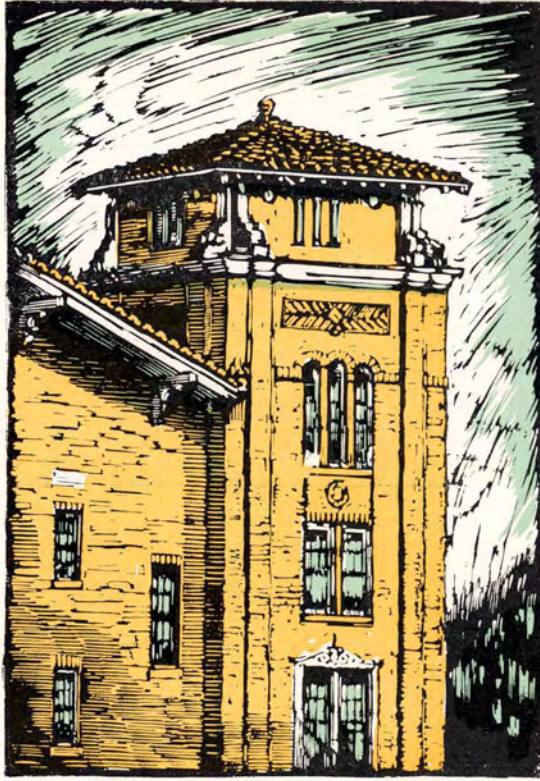
IN MEMORIAM

—
To the Memory
of

Merle Manning

Who was taken by death, October 9, 1926,
This page is dedicated in loving remembrance.

We shall remember Merle for her genial
fellowship; her enthusiasm for the class of
'28; her ardent zeal on the side lines; and
for her faith, courage, and helpfulness in
all commendable enterprises.



ATHLETICS

Schedule of Games

S. W. T. S. T. College.....	13	S. T. S. T. C.	2
Ft. Brown Twelfth Cavalry.....	0	S. T. S. T. C.	42
Schreiner Institute.....	7	S. T. S. T. C.	3
Fifteenth Field Artillery.....	14	S. T. S. T. C.	45
Victoria Junior College.....	0	S. T. S. T. C.	19
St. Mary's College.....	18	S. T. S. T. C.	0
Peacock Military Academy.....	0	S. T. S. T. C.	41



Lettermen

Weller, J. Smith, R. Mecklin, Firnhaber, Roy Shelton, Ralph Shelton, Warner, E. Shelton, Ellsner, Avery, McCracken, Jackson, Hansen, Crofford.



Top Row—Coach Smith, J. Smith, Roy Shelton, Filla, Robertson, Beaver, Ping, Crofford, Patrick, Graham.

Second Row—Mecklin, Hansen, Ralph Shelton, Avery, Warner, Ellsner, McCracken, Herrington, E. Shelton, Firnhaber, Nelson.





MELVIN WELLER
Halfback

FRANK WARNER
Fullback

Resume: Football 1926

The season which has just passed may easily be called a good one, because the team of Javelinas knew they were being counted upon to give their best and their all, and without exception, every Javelina covered himself with glory. At the first of the season our prospects for a championship team looked very formidable because there were eleven letter men back from last year and with some good added material. It looked as though we were going to have a hard fighting football team which would be unbeatable.

After a ten days' practice, before our school had hardly begun, we





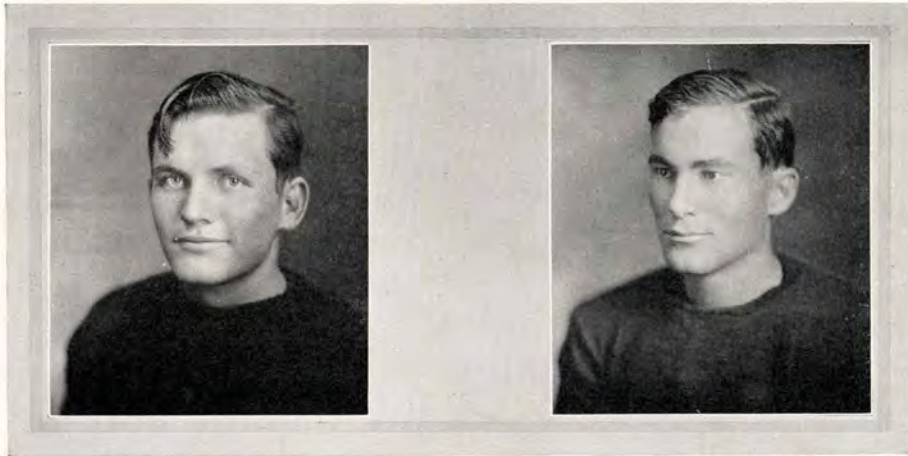
JESSE SMITH
Halfback

RALPH SHELTON
End

were scheduled to encounter one of the strongest teams of the T. I. A. A. conference, namely, the San Marcos Bobcats. "Dope" had it that we would be defeated by at least 20 points, but true to the spirit of the fighting Javelinas, the score was much smaller than "Dope" had it figured out. The final score was Bobcats 13, Javelinas 2. The Bobcats seemed to have worn themselves completely out during the first half, during which period of the game they were able to score. The brilliant work of McCall, their star, did much to defeat the Javelinas. The men playing for our College seemed to fight harder in the second half than they did in the first, and thus San Marcos was unable to push over a touchdown during the latter part of the game. Firnhaber played an excellent game at quarter and directed his team in a highly commendable way. Every man played his best and we are glad to say there were no regrets.

Our next game was with the 12th Cavalry. When these men first





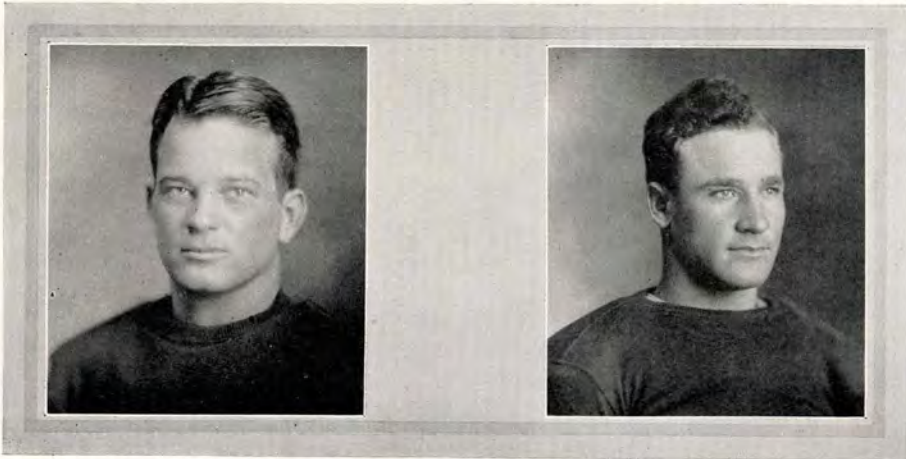
MAURICE McCRACKEN
Guard

ROY SHELTON
End

took the field, we guessed that the game would be a heated battle from start to finish because their men were giants compared with our light but rather fast team. After the first quarter there seemed to be no stopping the Javelinas because they played above and around the soldiers' heads. Firnhaber showed his ability to throw passes and Smith and Weller to catch them. Hansen did not allow the army to gain through the center of the line, while Jackson and Elsner held down the tackle position in a very good style. The team was playing like veterans that day. Weller's punts kept the army in their territory during the entire game and never did they threaten the Javelina's goal. The score was rather one-sided, ending: Javelinas 42, Ft. Brown 0.

Schreiner was the next on our schedule. We expected a hard game with the Mountaineers and we were not deceived in the least. Through determined fighting on our part, the boys from Schreiner were unable





GEORGE AVERY
Tackle

RALPH HANSEN
Center

to defeat us by a very large score. The Javelinas drew first blood when Weller kicked a neat field goal from the fifteen yard line. This occurred in the first few minutes of play. To Warner goes the honor of being the stellar man in defensive work, playing the greatest game of his life and stopping many plays which might have added to their score. Firnhaber at quarter directed the team well and passed with uncanny accuracy. Ralph, Roy, and Ellison Shelton held down the end positions, and it was largely due to their rushing and tackling that the Schreiner aggregation was stopped in their tracks. Crofford and McCracken played their best against the heavier opponents, and by the way the Schreiner boys' plays were cut up it was evident that our boys were using Coach Smith's tactics to the best advantage.

The next victims of the Javelinas were the soldiers from San Antonio. They, too, seemed to have a very formidable team, comprised of many





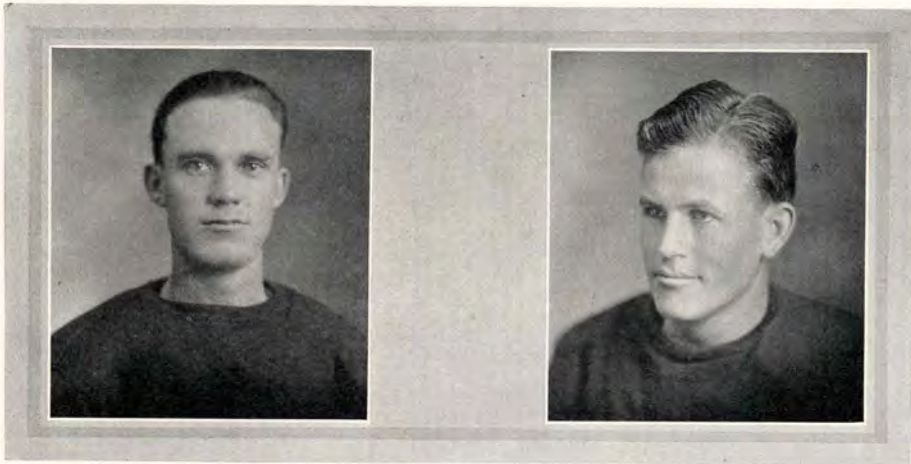
VERNON PING
Center

ELLISON SHELTON
End

veterans. They were able to register 14 points on our team before we "got hot," but after that it was a runaway for our fighting boys. Smith was the individual high scorer, making four touchdowns. While Firnhaber was passing his way to further glory, the linesmen were holding the charging backs of the big army team. The teachers were lighter and faster and this was an asset, because through their bility to catch passes, the score resulted in a very one-sided victory for the College. Score: S. T. S. T. C., 45; 15th Field Artillery, 14.

The following week the Javelinas were engaged in a game with the Victoria Junior College. Probably not many were satisfied with the score, but on account of a muddy field and the absence of several first string men the Javelinas were unable to push over so many touchdowns. Nevertheless every man who did play, played a very good game. Warner ripped through the line at will and scored twice. Our linesmen broke





WILLIAM HERRINGTON
Tackle

SHERMAN NELSON
Guard

through Victoria's defense many times to throw the visiting backs for a substantial loss. Patrick, playing full-back, showed the coach that in him there is good material for a backfield man next year. The score ended: S. T. S. T. C., 19; Victoria Junior College, 0.

By comparative scores we should have beaten St. Mary's and although the score was decidedly unfavorable we played them a very good game. Through the use of scouts, they had plays of the Javelinas diagnosed, and before we could properly execute a formation they had the defense shifted to suit our attack. Though a number of our passes were completed, none of them made a counter for us. There should be absolutely no excuses offered for our defeat but the team was handicapped by having to travel on an early morning train from Kingsville to San Antonio with only a few hours rest before the game. Every man played to the utmost of his ability but the physical strain through which the men had





LEWIS JACKSON
Tackle

HORACE ELSNER
Tackle

gone showed upon them. The score does not indicate how hard fought a battle the Javelinas gave the Rattlers and only those who were present can appreciate the splendid spirit manifested throughout the game. The final score was S. T. S. T. C., 0; St. Mary's 18. The teachers had to fight hard to keep the score from being larger than it was, but every man played his best and we were simply beaten.

The Javelinas, still smarting from the defeat from St. Mary's, took sweet revenge on another school from the same city, the Peacock Military Academy. The Javelinas neatly plucked the Peacocks to the tune of 41-0. The good playing of the Javelinas tells the whole story. Accurate passing, good blocking, vicious tackling and excellent interference featured the team's play. Smith, playing his first game at quarterback directed his team like a veteran. Weller playing his last game for S. T. S. T. C., outdid his previous performances both on offense and de-





Lewis J. Smith

Director of Athletics



VERNER CROFFORD
Guard

RUPERT MECKLIN
Halfback

fense, receiving and intercepting passes and using his educated toe to advantage. He kicked five out of six goals after touchdowns. Firnhaber shone with his accurate passing, and when he was called on to perform he was always ready to give his all and his best. Warner upheld his line-plunging fame. Mecklin played a neat game, by intercepting passes and running them back. Ping, Avery, Crofford, Elsner, Jackson, E. and R. Shelton showed that they could really play football and did so, much to the discomfort of the Peacocks. The line rushed the San Antonio boys furiously and many of their plays were never carried out.

All in all the past season has been a huge success, one which will stimulate the interest for football in our College. With the passing of years South Texas State Teachers College will win laurels which may be traced back to the Javelinas of '26. Long may they play the game as it should be played!



"C" Association

1925	Football	1926
Weller Warner Fitch Campbell Cochran Firnhaber Shelton, Roy Shelton, Ralph Altizer Loggins Whitten, R. Whitten, J. Hansen Callahan Crofford		Weller Smith, J. Mecklin, R. Firnhaber Shelton, Roy Shelton, Ralph Warner Shelton, E. Ellsner Avery McCracken Jackson Hansen Crofford

1926	Basketball	1927
Miller Graham Weller Shelton, Roy Shelton, Ralph Baird Mecklin, R. Fitch		Ping Weller Hensleigh Whitten, R.

1926	Track	1927
Whitten, R. Whitten, J. Weller Graham Shelton, Roy Shelton, Ralph		Whitten, R. Smith, J. Mecklin, R.

Baseball 1926

Miller
Fitch
Jackson
Hensleigh
Shelton, Roy
Shelton, Ralph
Gomez
Smith, W.
Whitten, R.
Tomlinson



When Brawn Beat Brains



Weller and Family



*When the Bobcats
Didn't do so well*



"Signals Check"



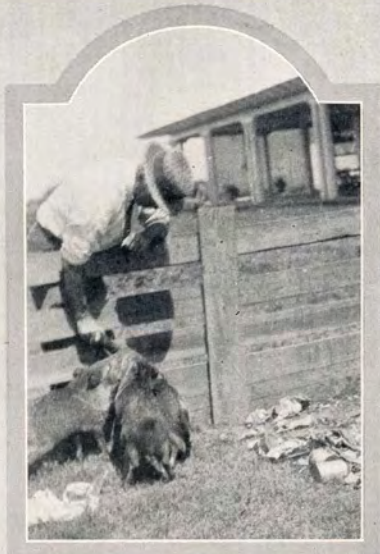
Our Rooting Section at San Antonio



*'When the Army didn't
play "The Old Army Game"*



"Ft. Brown Loses"



"Javelinas"



Hold that Line



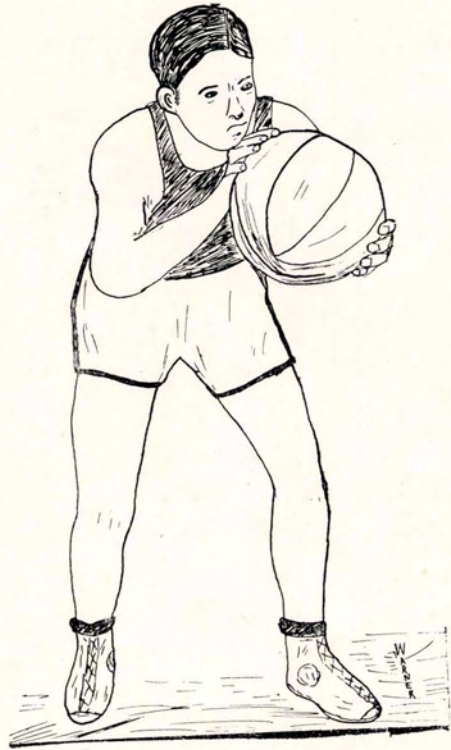
Schreiner



"In the shadow of the Goal"



When the Hogs Held



BASKETBALL

Schedule of Games

Robstown	3	S. T. S. T. C.	52
Mo. Pacs.	14	S. T. S. T. C.	21
Falfurrias Independents	13	S. T. S. T. C.	38
Sandia	28	S. T. S. T. C.	52
Taft	20	S. T. S. T. C.	28
Schreiner	33	S. T. S. T. C.	22
Schreiner	24	S. T. S. T. C.	17
Briggs Construction Co.	21	S. T. S. T. C.	26
Mo. Pacs.	12	S. T. S. T. C.	23



Lettermen

Ping, Weller, Hensleigh, Whitten





RANKIN ROBERTSON
Forward

RONALD MILLIGAN
Forward

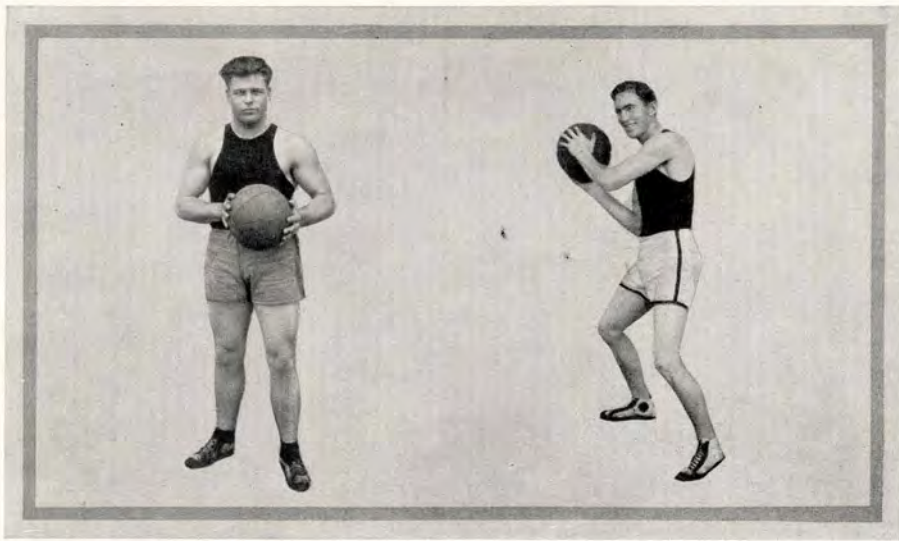
Basketball Resume 1927

Basketball has created quite an interest in our College and now that we have our new gymnasium we may expect to see some closely contested games here.

The first game of the past season was a practice game and not a regular scheduled one. The Javelinas journeyed to Taft and played the Taft Independents on December 15th. In this game the College was represented by a number of green players after only a week of practice. A number of the most promising aspirants had not as yet reported, and even though Taft threw the majority of the goals, several of the Javelinas showed a bit of talent that was to carry them through the remainder of a highly successful season. The score was decidedly in favor of the out of town team but this did not discourage the fighting Javelinas in the least. The score was S. T. S. T. C. 8, Taft 28.

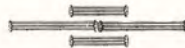
The next game was with the Robstown High School and a good deal of interest was lost due to inadequate competition. The Javelinas romped through the lighter visiting team to win by a score of 52 to 3. Robertson and Milligan scored at will, and the defensive work of Roy Shelton was responsible for the fact that the Cotton Pickers were unable to score a single field goal.

The following week the Javelinas played the Missouri Pacific team of this city which was reputed to have several ex-college men. The game was a rough and tumble affair, but a thrilling contest from start to finish. The College continued their success by defeating the Mo-Pac team by a



BOB WHITTEN
Guard

RALPH SHELTON
Guard

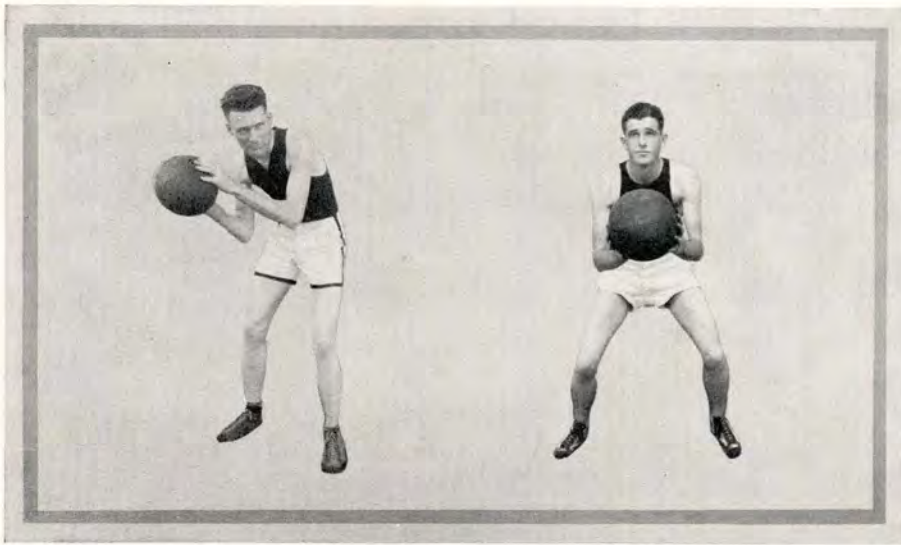


score of 21 to 14. The first half went scoreless until the last minute of play, when Robertson slipped in a couple of his spectacular shots. From this time on the College held the lead and thereby won one of the most interesting games witnessed here.

The determined and continued drive of the Javelinas was too much for the Falfurrias Independents, and the College five won their third straight victory. The first half promised a stirring conflict, but in the last period the accurate goal shooting of the College five broke the stubborn resistance of the opposing team. The visitors could not break through the Javelina's five man defense, which proved a considerable success. Robertson was high point man with 19 points and was given able assistance by Milligan and his team mates. The final score was S. T. S. T. C. 38, Falfurrias 13.

The Javelinas were then ready for more victories and engaged in a game with the highly reputed Sandia team. This team has won high honors throughout South Texas, but was ably defeated by our fast working quintet. Their center was the only man who could find the basket but this was not enough to match the perfect teamwork of the Javelinas. Every man on the College team seemed to be working perfectly that night and the result was a victory for the College. The score was S. T. S. T. C. 52, Sandia 28.

The next three games were played away from home and the team



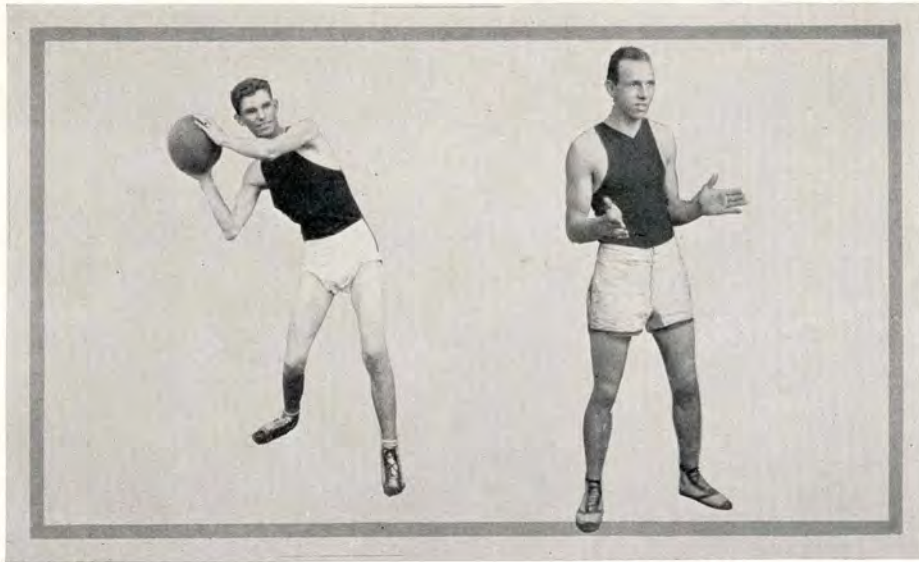
ALBERT HENSLEIGH
Center

RUPERT MECKLIN
Center



with Coach journeyed to Taft. Here the Javelinas met and defeated the fast Taft team, which had defeated the College in a practice game at the very first of the season. Led by the Javelina ace, Milligan, and flashing the most brilliant offensive up to date, the College defeated the opposing team to the tune of 26 to 20, and this was certainly a game that was wanted on the list of College victories. The more difficult the shot the more accurate was Milligan. The guarding was so excellent that Taft scored only two field goals during the first half. In the last period of play it was due to the College forwards that the game was kept on ice. Weller, stellar center for the Javelinas suffered a severe wrench in his knee, which resulted in the loss of his services for the remainder of the season.

The College then continued their journey and played two games in Kerrville, with the Schreiner Institute. In neither of the two games did the Javelinas show the aggressiveness that usually characterizes their play. This was probably due to the large playing court of the Institute, to which our boys were unaccustomed, and to the long trip. In the first game Schreiner began the scoring with a field goal and soon had a commanding lead, placing the game in a position where a win would be out of the question for the College. During the second half the Javelinas came out of their lethargy and clearly out-fought and out-pointed their opponents, but were never able to overtake the lead in the score. Robertson led the scoring for the College with ten points and the score of this



VERNON PING
Center

MELVIN WELLER
Center



first game was: S. T. S. T. C. 22, Schreiner 33.

After a rest of a night and a day, the Javelinas threatened the Institute with a loss, and this game was indeed a whirlwind affair. The floor work of the College boys was superior, as they, time and again, worked the ball down the court to lose it in a poor shot. The score see-sawed back and forth and the first half ended 9-7, in favor of the Institute. In the final period, the game was in doubt until a last minute rally by Schreiner which turned the tide to a victory for them. The score was: S. T. S. T. C. 17, Schreiner 24.

After tasting defeat, the boys were set to gain revenge on the Briggs Construction Company team which boasted some stellar players. This game was indeed a treat for the fans. Up the field, and back again, every movement of the ball was a bitterly contested one. The game was exceedingly rough but the Javelinas emerged with the big end of the score which was: S. T. S. T. C. 26, Briggs Construction Company 21.

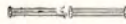
In the closing game of the College basketball season the excellent floor work of the Javelinas was very apparent. Had the College made all their crisp shots, the game would have been more one-sided. The goal shooting of the College was off form, and this was probably due to the fact that there was not strong enough opposition. Shelton and Whitten played an excellent game at guard while Ping played a bang-up game at center. Milligan was high point man. The result was S. T. S. T. C. 23, Missouri Pacific 12.



BASKETBALL

Schedule of Games

Ricardo	17	S. T. S. T. C.	18
Driscoll	12	S. T. S. T. C.	37
Kingsville High	7	S. T. S. T. C.	31
Missouri Pacific	15	S. T. S. T. C.	30
Missouri Pacific	25	S. T. S. T. C.	33



Lettermen

Hollofield, Brooks, Thompson, Robbins, Ahrens, Bryant, West, Boyd



Coach Manning, Ahrens, R. Robbins, Bennett, Grosse, Lester,
Rogers, O. Robbins, Willis, West, Bryant, Fry, Boyd, Thompson, Brooks

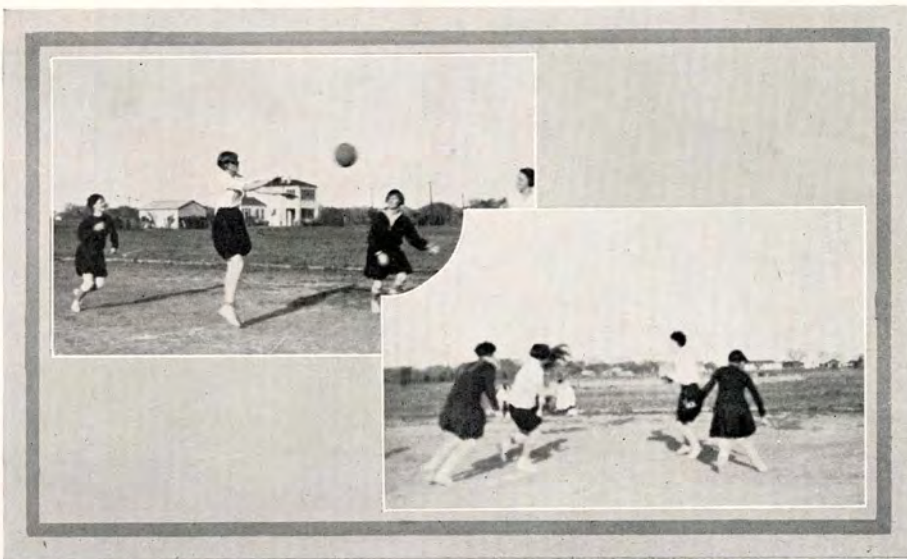


HOLLOFIELD EDNA BROOKS JEWEL MAE THOMPSON REBA ROBBINS
Guard Guard Forward Guard

Resume

When winter term opened January 4th, basketball was offered as a course in Physical Education, under the direction of Miss Stewart with Miss Grace V. Lutz student coach. Since Miss Lutz led the undefeated team of 1926, the girls began work from the first day with a spirit to win. After a few weeks' hard practice and a number of successful games Miss Lutz, called into the field of matrimony, resigned. The team was not long without a coach for Mr. Manning who had co-operated with the coach and team through all their games was ready to assume the role of coach. All has been said when we make the statement that the team was successfully coached through another season in which S. T. S. T. C. was undefeated.

Ricardo, in the first game, furnished these fighting champions the greatest anxiety





LOUISE AHRENS
Jump Center

EDNA BRYANT
Side Center

EVA WEST
Forward

EDITH BOYD
Forward

of the season. It was a hard fought contest which brought defeat to the visitors with the score 17 and 18.

The next game was with Driscoll, and as the score 12-37 indicates, the team had done excellent work since the first contest. Another easy victory was registered by S. T. S. T. C. when this fast smooth working college team met and defeated Kingsville High School by the score of 7-31.

After winning over the Missouri Pacific team 15-30 the Teachers' sextette evidenced their decided claim to superiority in this section. After defeatng the Missouri Pacific 25-33 a few days later this claim was justified.

It is with pride that the College Team closed the second season with the record—"S. T. S. T. C. undefeated in Girls' Basketball."

Edna Bryant, Louise Ahrens, and Edith Boyd were "letter-men" of the 1926 team. Other members of the team were: Mrs. Hollofield, Edna Brooks, Jewel Thompson, Reba Robbins, and Eva West.





TRACK

Second Annual Texas Relays

1927

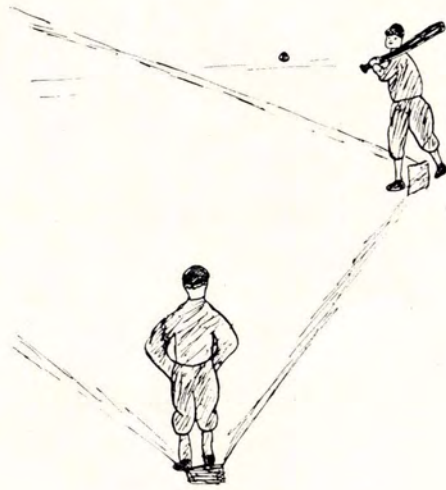
This College was represented in the Texas Relays held at Austin on March 25th, by Jesse Smith, Rupert Mecklin, and Bob Whitten. Weller was a possible entry but owing to an injury sustained while broad jumping he was unable to attend. Coach Smith, with these three entries, journeyed to Austin by auto Thursday so as to have a night's rest before the games.

On arriving in Austin they were accommodated in one of the best hotels and after a good night's rest were in the right shape to participate in the games. Bob Whitten was entered in the shot put and made a remarkable showing, but the record in the shot put was increased by a foot. Bob did not place but was complimented by Coach Smith for his excellent showing. Jesse and Rupert were entered in the 100 yard dash, but were eliminated in the first heat because the first heat was probably the fastest one ever run on Texas soil. The time for this heat was 9.7 seconds, only two-tenths of a second above the world mark held by Charles Paddock. Our boys stayed up with the leaders for about fifty yards but were not picked to run in the finals. The Relays were represented by leading Universities and Colleges from all the United States, and by high schools from Texas largely. There was a team entered in the Relays from Mexico City too. The boys and Coach Smith had the honor of seeing the famous Indians finish their spectacular 86 mile run from San Antonio to Austin, which ended in front of the Judges stand at the Stadium. This within itself was a treat. The boys and Coach were agreeably entertained and were elated over having made the trip.



Lettermen

B. Whitten, J. Smith, R. Mecklin.



BASEBALL

Baseball 1926

Schedule

Robstown Cotton Pickers	1	S. T. S. T. C.	6
Robstown Cotton Pickers	8	S. T. S. T. C.	6
Kingsville Brahmas	21	S. T. S. T. C.	28
Kingsville Brahmas	28	S. T. S. T. C.	25
Kingsville Brahmas	26	S. T. S. T. C.	19



Lettermen

B. Whitten, Jackson, Gomez, Tomlinson, Weller, Fitch, Hensleigh,
Roy Shelton, Ralph Shelton, Weldon Smith



Review of Season

The first game of the 1926 baseball season found the Javelinas pitted against the Robstown Cotton Pickers on the latter's field. The wind was blowing a gale, which made good playing almost impossible. However, the game was close and interesting until the eighth inning when the Javelinas scored their six runs. The second game was also played with the Cotton Pickers. It resembled the first in that the team which got an early lead, lost out in the final stages of the game. The Javelinas held a commanding lead until the seventh inning when errors by Sims let in enough runs to win for the visiting Pickers.

The last three games were played with the Kingsville Brahmas. There was much rivalry between these teams, and these games were very interesting to the local fans. The Brahmas succeeded in winning the first two games, but were foiled in the third. This game ended the series with the Brahmas, and the Javelinas closed their first season with a victory over their city rivals.

BOB WHITTEN
Left Field

Bob was our Bambino. His size was enough to convince the opposing pitcher that there was power behind the bat.



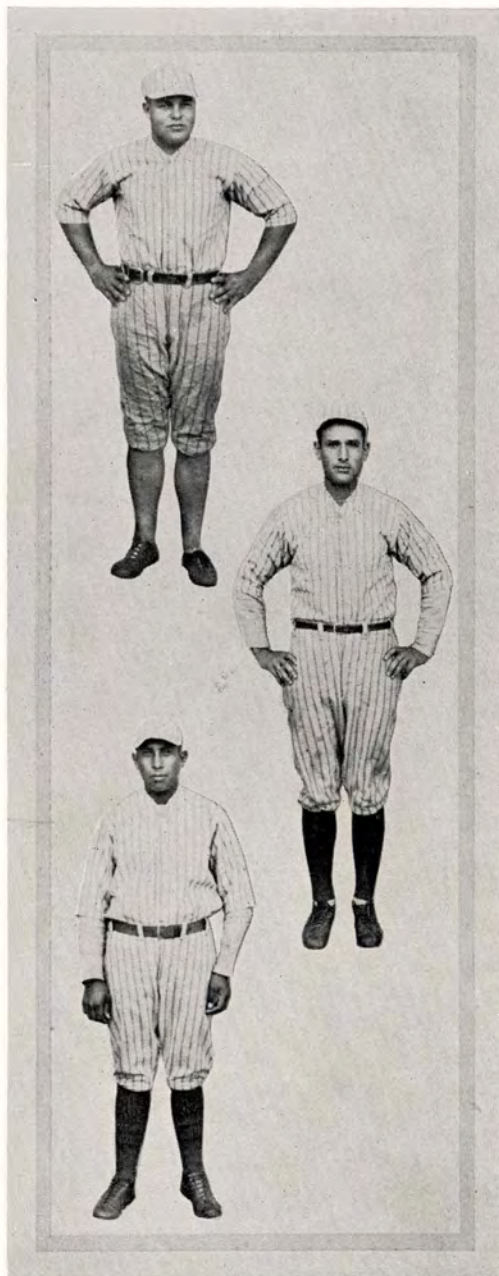
LEWIS JACKSON
Pitcher

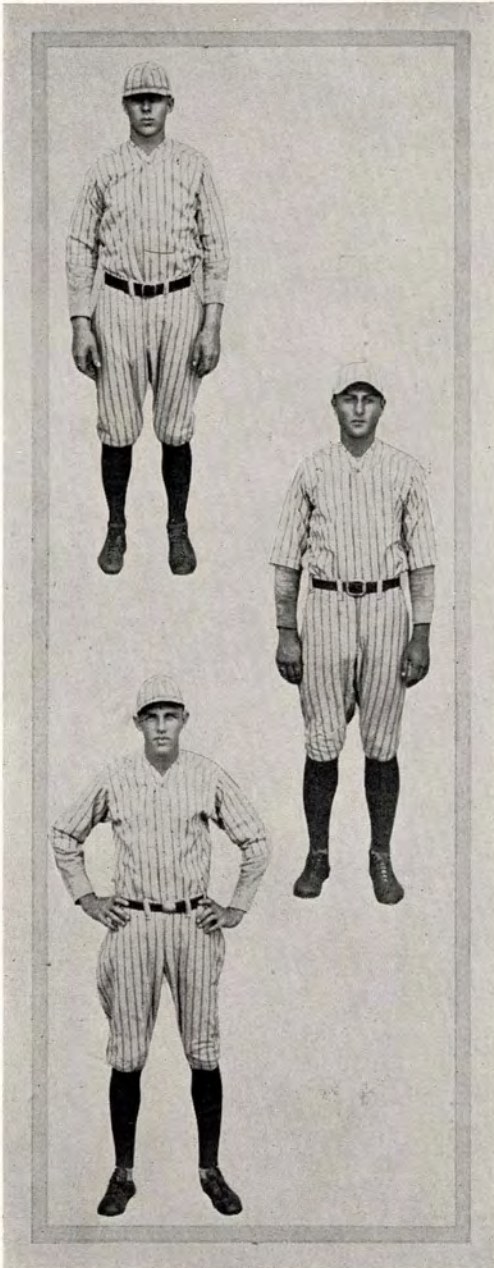
Jackson won the majority of his games on account of his excellent arm. One requirement of a good pitcher is a steady head, and Louis had this.



SIMON GOMEZ
Right Field

Gomez held down third base like a big leaguer. His fielding was perfect and his throwing accurate.





JEFF TOMLINSON
Third Base

Tomlinson was a wonder with the bat and we haven't a doubt that he will be given a tryout with the big league in a couple of years.



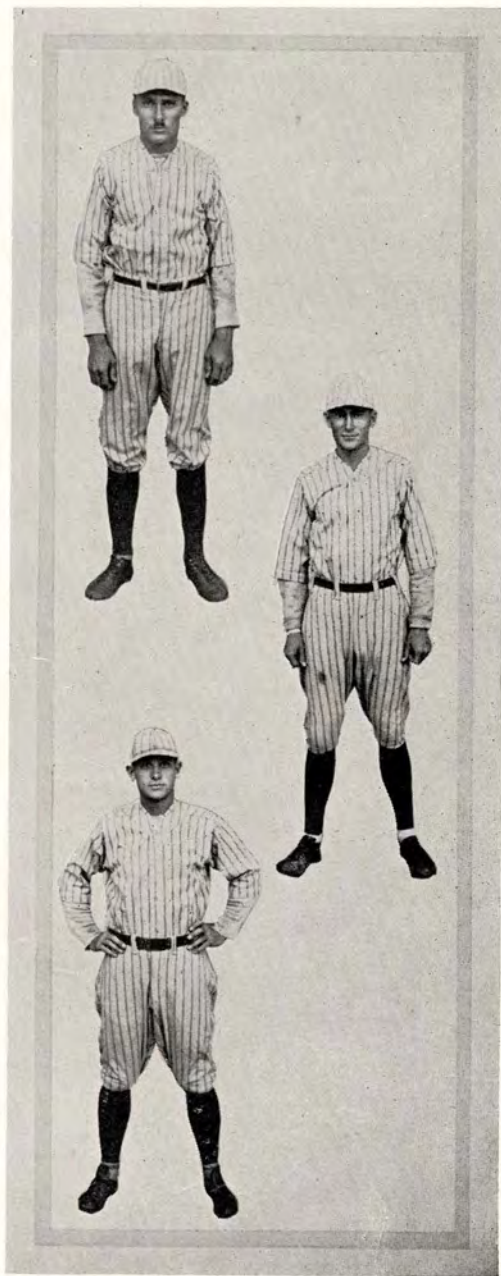
BAILEY MILLER
Catcher

Miller was always sure and one of the best catchers we have seen on this diamond. His coolness aided in our victories.



RAYMOND FITCH
Pitcher

Fitch had a wonderful delivery and used his arm to show his effectiveness. To him is due a large part of the success of the games won.



ALBERT HENSLEIGH
First Base

Hensleigh was sure of himself. Never becoming rattled, he had the best requirements to hold down the first sack, and this he did.



ROY SHELTON
Second Base

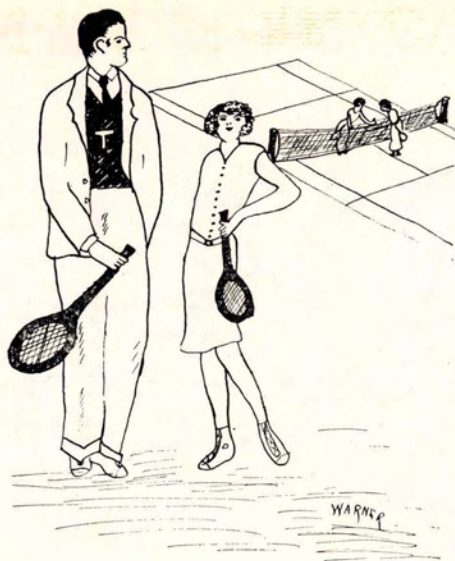
Roy played good baseball at all times, and his hits, while they were needed, counted for many tallies.



WELDON SMITH
Center Field

Weldon played his usual fast game of ball, and owing to his ability to cover ground many a batter was robbed of a hit.

Miller, Tomlinson, Fitch, Jackson, Hensleigh, Roy Shelton, Ralph Shelton, Gomez, W. Smith, R. Whitten.



TENNIS



Results of the Final Matches of the Summer Quarter Tennis Tournament

Men's Singles (College)—Gatewood Jones won from Sethwood Patrick. 6-0, 6-1, 6-4.
 Men's Singles (Faculty)—J. Lee Stambaugh won from A. H. Engle. 6-3, 7-5, 6-4.
 Men's Singles (All-College)—Gatewood Jones won from A. H. Engle. 6-3, 6-4, 6-3.
 Men's Doubles (College)—Sethwood Patrick and A. D. Hensleigh won from James Cole and Max Maule. 6-1, 6-3, 6-2.
 Men's Doubles (Faculty)—Clyde Reed and J. Lee Stambaugh won from A. H. Engle and J. R. Manning. 12-10, 6-1, 6-3.
 Men's Doubles (All-College)—Sethwood Patrick and A. B. Hensleigh won from Gatewood Jones and L. F. Connel. 2-6, 6-3, 5-7, 6-3, 6-2.
 Women's Singles (College)—Pearl Kreuz won from Iva Carroll. 6-4, 6-0.
 Women's Doubles (College)—Pearl Kreuz and Bess Ennis won from Eva Manning and Iva Carroll. 6-1, 4-6, 6-3.
 Mixed Doubles (College)—Pearl Kreuz and A. D. Hensleigh won from Eva Manning and Gatewood Jones. 6-3, 4-6, 9-7.

A. D. HENSLEIGH, Student Manager



Coach Smith and His Dandies

In College life are many phases
Of work to do for you and me;
But athletics is the phase that delights
Coach Smith and his dandies free.

From morn 'till night the work advances,
Yet 'tis play to all who try.
'Tis rougher than the Folkish dances,
Yet for pity they won't cry.

Now, "Brother Warner, make that line;"
And "Firny" don't you drop that pass,"
Counsels Coach. "Now that's just fine,
You'll soon be put in Weller's class."

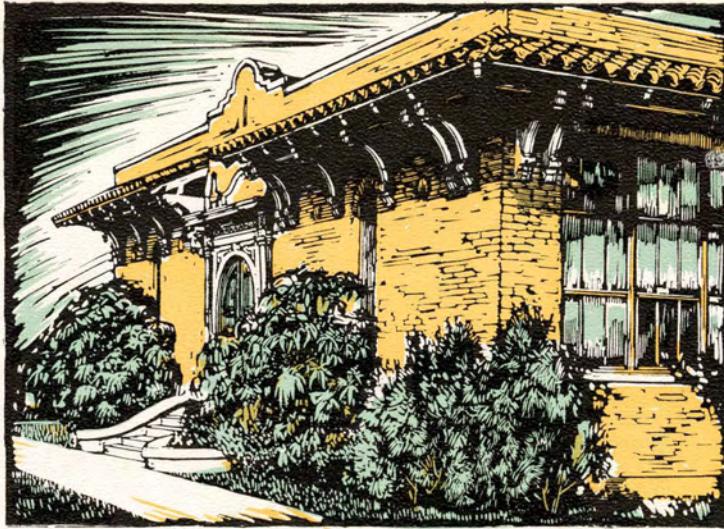
"Bob, don't throw the 'pill' too far,
There's no use in showing off
Just because that you're a 'star.'
I said, stop. Fifty feet's enough!"

"Untwist your neck and come on in,"
Yells the coach to Vernon Ping;
"There's opposition; we shall not win
Unless you shoot the ball right thru the ring."

Coach is friendly with them all,
And has done wonders for each one,
No matter if they're short or tall
He shows partiality for none.

School life for boys is much enhanced,
With training for athletics,
So doff your hat to Coach Smith who chanced
To teach the boys aesthetics.

F. Beaver.



FEATURES





FAVORITES

Verna Ross
Beauty

Mary Lester
Popular

Willa Woodside
Junior

Jesse Smith
All Round

Frank Warner
Athlete

Melvin B. Weller
Senior



"Verna Ross"



"Mary Lester"



"Willa Woodside"



"Jesse Smith"



"Frank Warner"



"Melvin Weller"



FEATURES

"The World's Winter Garden"



'Palms and Beans in the Lower Rio Grande Valley'



'Gate Way to the Valley'



'A Highway in the Rio Grande Valley'



"Dates"



"Rivera"



'Grape Fruit at Ft. Jardin near Brownsville'

"The Magic Valley"



Bananas & Oleanders



Citrus Orchard



Oranges



Rhodes Grass



Ornamental Palm



Grape-fruit



Cotton Field



Date Palm

"Our Coast Line"



*"Main Irrigation Canal"
at San Benito*



"Sailing from Point Isabel"



"Crossing to Mata Moros"



"San Padre Island,"

The Opening of the Port of- Corpus Christi

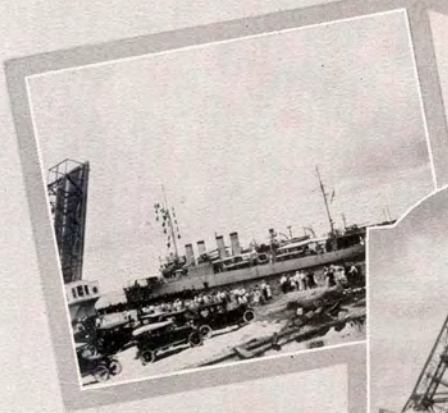
76



"Entering the Channel"



"The Ogantz"



"Torpedo Boat"



Govt. Yacht



"The Bridge"



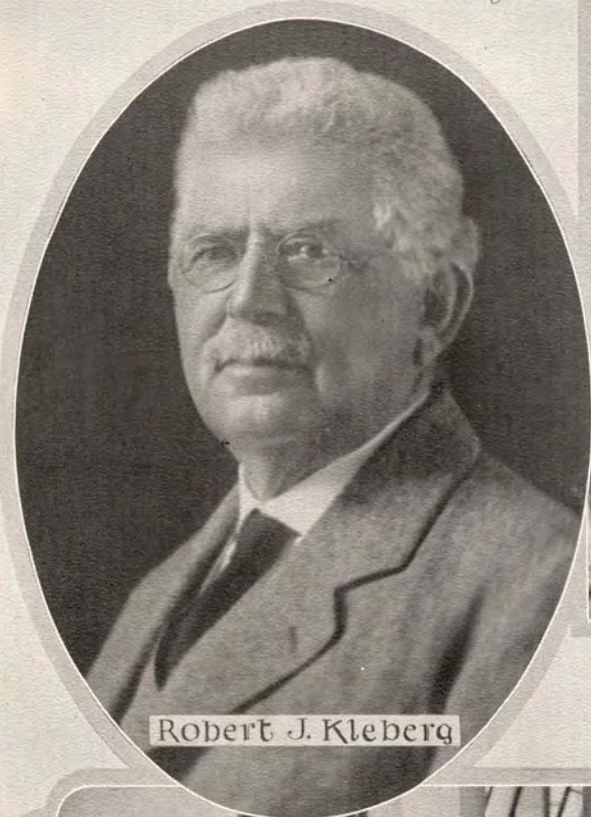
"Bird's eye view of Docks"



"The Causeway"

Corpus Christi, Causeway,
and the West Pier 1917

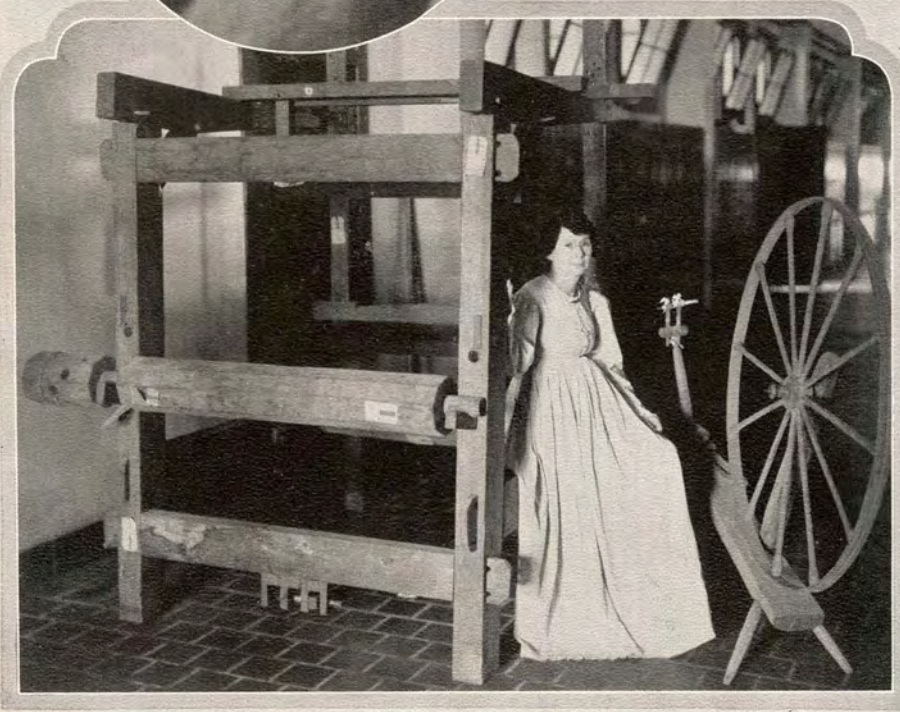
"Kleburg History Club"



Robert J. Kleberg



History Club Place Marker on Amos Creek Where Gen. Taylor Crossed in 1846



Loom and Spinning Wheel
Constructed during
The Civil War



"Physical Ed."



Laboratories



Biology



Chemistry



Library



Secretary



Sub College



Books



Art



Domestic Art



Domestic Science



Business and Registration

"Laboratories"



"Two Flowers"



"Future Accountants"



"Speed Merchants"



Dr. Cousins at his desk'



Physics Laboratory



Miss Baugh, Our Dean,
at work

Faculty



Faculty



Faculty



Play Time



"A Short Story"



"Fishing"



"Swimming"



"Boating"



Loafing



"Golfing"



Teasing

"Costume Parties"



"Extra Curricular"



Babies in the Woods



"Misericordia Hall"



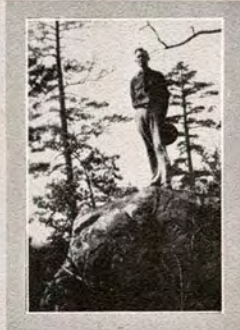
"Hoboing"



"Waiting"



"Yes, We have no bananas"



High Ambition



Juniors



"Misericordia"



"Big Man"



OUR CAMPUS

Social Calendar

Sept. 30—The Parent-Teacher's Association of the city entertained the faculties of the College and public schools of Kingsville with a delightful party at the American Legion Hall.

Oct. 1—Churches of the city entertained students of the College with "out-of-door" parties.

Oct. 2—President and Mrs. Cousins were at home to the College faculty at a formal reception.

Oct. 12—Kleberg History Club presented the program, "Columbus, the Discoverer."

Oct. 21—B. S. U. dinner party.

Oct. 25.—Seniors presented "The Fool" in rehearsal.

Oct. 30—Graves opened; Spooks walked abroad. Our delightful Halloween party was sponsored by the faculty.

Nov. 11—Address, "The End of Strife"—Hon. E. Polk Hornaday, Harlingen.

Nov. 13—Special train to San Antonio. Thanks to the Chamber of Commerce.

Nov. 16—Junior class presented a typical third grade program in Chapel.

Dec. 1—Mr. Engle and Miss Wood appeared in recital.

Dec. 10—College Concert presented at Riviera.

Dec. 11—Miss Edith Cousins honored the unmarried members of the faculty with a buffet luncheon.

Dec. 13—Miss Margie Neal of Carthage, retiring member of the Board of Regents of the State Teachers Colleges, and Senator-elect from district No. 2, made an address before the faculty and student body in which she set forth a very high conception of civic responsibilities.

Dec. 17—The Sophomore class furnished a delightful chapel program.

Dec. 19—Mr. Engle presented the Choral Club in "Bethlehem." The vesper service was one of the most delightful programs of the year.

Jan. 17—The Davies Opera Company presented "The Mascot," a delightful comic opera.

Jan. 21.—Freshman Day. A chapel program was given in the morning, and a tacky party in the evening.

Jan. 24.—Miss Jackson, student worker for the Presbyterian church, gave a splendid talk on the influence of the Christian life.

Feb. 9—One of the many delightful musical programs in chapel. This one especially featured the Orchestra and Girls' Chorus.

Feb. 14—St. Valentine remembered South Texas College girls with lovely parties, candy, and flowers.

Feb. 21—Miss Ruth Pennybacker, under the auspices of the Woman's Club, delivered a delightful lecture, "Tendencies of the Modern Drama."

Feb. 22—Arbor day was observed by the senior class in the presentation to the College of a row of Yucca.

"Summer-Time"



VALLEY CLUB



"BATHING"



NEAR POINT ISABEL



"Lonesome - That's all"



"Our Twins"



"Seen About The Campus"



"Celebration Days"



"Dear to Us"



"Hansens"



"Freddys"



Julia



"Paper Slings"



"Adairs"



"Bakers"



"On Parade"



"Warner House"

Social Calendar

Continued

Feb. 21-26—The Treble Clef Club, sponsored by Mr. Engle and Miss Wood, toured the Valley.

Feb. 28—Address by Dr. Walton, pastor of the First Christian Church. "Making the Most of One's Self."

Mar. 5—Men's Glee Club of Southwest Texas Teachers College gave a concert in the auditorium.

Mar. 9—Men's Chorus of South Texas State Teachers College gave a program in chapel.

Mar. 11—The Junior Class gave a tea and shower honoring Miss Ida Mae Egg.

Mar. 19—The annual reception given to the seniors by President and Mrs. Cousins at their home was one of the season's most delightful social functions.

Mar. 24-25-26—The South Texas Teachers Convention was held at South Texas State Teacher's College.

Mar. 29-30—The Coffer-Miller Players presented "She Stoops to Conquer," and "Love in Livery" in the college auditorium.

April 2—The completion of the new health building was celebrated by an informal dance.

April 9—The Second Annual Music Contest for High Schools was held at S. T. S. T. C.

April 9—The Sophomore and Junior classes were given a reception at the home of President and Mrs. R. B. Cousins.

April 12—The Treble Clef Club presented their second annual home concert in the college auditorium.

April 14—The Men's Glee Club rendered a program at Robstown in connection with the District P. T. A. meeting.

April 15—Good Friday, all El Rancho material goes to press.

April 19—The members of the Senior class were guests at one of the most delightful functions of the year—the banquet given by the Junior class in the college Forum.

April 22-23—The District Interscholastic Meet was held at South Texas State Teachers College.

April 30—The May fete under the direction of Miss Mary V. Stewart was presented on the college campus.

May 7—The annual B. S. U. Banquet was given at the Casa Ricardo.

May 15—The College Orchestra rendered a very high-classed program at Aransas Pass to the delight of a large audience.

May 20—The Male Quartette contributed to the pleasure of an appreciative audience at Aransas Pass.

May 21—Senior Class Day exercises.

May 22—The Baccalaureate Sermon was delivered by Dr. C. R. Wright, Presiding Elder of Fort Worth.

May 23—The Commencement Address was delivered by Senator J. W. Reid, of Canyon.

May 28—A beautiful garden party sponsored by the faculty was given on the College Campus.

"Baker House"



"THE GRAND BALL"



"MARY, THE LOVER"



"THE LATEST ACHIEVEMENT"



"BALANCED"



"AN ACROBAT WITH SUPPORT"



"-AND, GREAT WAS THE FALL-"





"WARNER HOUSE AGGREGATION"

"Our Boarding House"



"THE LOOKOUT"



"UP IN THE SWING"



"ORFANTS"



"Pal-O-Mine"



"HOUSTONIANS"



"SIAMES TWINS"



"KARGES & STAMBAUGH"



"BUDDIES"



"MEN OF STEEL"



"FISH"



"TWO BILLS"



"BOOK AGENTS"



Senior Programs

"The Little Fool"

Amos, a tailor..... Mr. Hensleigh
 Euphemia, his shrewish wife Era Harper
 Mrs. Squire Tubbins Ona Lee Warner
 Ricot, a happy-go-lucky jester..... Belva Williams

Presentation of the Yucca

Invocation..... Rev. Hunter
 "The Yucca"..... Vaughn Buchanan
 Class Prophecy..... Albert Hensleigh
 Address..... Dr. Cousins
 Song..... Senior Class

Planting of the Tree

Presentation of the Spade to Junior Class

Class Day Exercises..... May 21
 Baccalaureate Sermon..... May 22
 Dr. C. R. Wright, Presiding Elder, Ft. Worth
 Commencement Address..... May 23
 Senator J. W. Reid, Canyon
 Presentation of Degrees..... May 23

The Yucca

Ivory tinted bells of nature
Perched upon your velvet spine
God had plans made when he put you
Down the Rio Grande line.

This old world was dull and dreary
Burning deserts bleak and bare
Till He dropped you from the heavens
Now you blossom everywhere.

Long ago when Indians traveled
Paths that white men never trod
You adorned some dark maid's girdle
Gave the Indian proof of God.

When the first white men came to Texas
Burning feverish with desire
Of new lands as yet unconquered,
You gave courage to their fire.

Ivory tinted bells of nature
Perched upon your velvet spine
Coming generations need you
Along the Rio Grande line.

You shall help adorn our campus
Row on row your beauty shed
On our own South Texas College
After we have passed ahead.

So we leave you to your duties
Let your roots cleave to the soil—
Linger long, sweet desert flower
Glow in honor of our toil.

Ivory tinted bells of nature
Perched upon your velvet spine
We use God's plan when we plant you
Down the Rio Grande line.

—F. Beaver, '27.



"Maids in Waiting"



"Stags"



Hallowe'en Party

Amid ghostly howls, wierd moans and sighs, and the swishing of bats' wings and black cats' tails, the students of S. T. S. T. C., the majority of whom were dressed to represent some mysterious figure of the spirit world, were ushered into the auditorium by the faculty on the evening of October 30. The gala effect of the room was heightened by its decorations of orange and black.

Following the grand march in which everyone participated some very clever stunts were presented by various organizations. An effective costume pantomime, "The Spirit of the Rio Grande," was given by the Valley Club. The Seniors added material for a new Conrad short story in the presentation of the "Secret Sharer." The Junior class gave an interesting representation of "Blue Beard's Seven Wives." Perhaps the most enjoyable contribution was the English Club's presentation of "Lord Ullin's Daughter" in pantomime. After several numbers by the Harmonica Band the Spanish Club gave a very realistic bull fight. A short intermission followed during which the "punch bowl and cookie jar" presided over by the Classical Club was very popular. The fortune booth of the History Club and Sub-college Departments also furnished merriment.

The second cycle of stunts was started with a wierd ghost dance by the Chang Foo Choo girls. The Sophs led the audience through an extremely spooky cemetery, where everyone was afraid to look over his shoulder for fear of a ghost. The last stunt, and the one which took the prize, was the one given by the Freshman class where some very major surgical operations were performed upon upper classmen for characteristic maladies.

The prize for the best costume went to Jack Conner, a tiny black devil. The prizes were stalks of sugar cane, making a most enjoyable conclusion to the evening of fun.

Fun For All; All For Fun

The B. S. U. entertainments have ranged from hobo parties to banquets. Organized stunts, get acquainted games, contests, music, and a "barrel of punch" featured the first party of the social calendar. The annual hobo convention convened in the depths of the mesquite November 19, 1926, where argumentations were weighed, experiences exchanged, and plans made for the abolition of the bull dog and toothbrush.

A formal dinner at the Casa Ricardo was the next concern of the social committee on October 21. This was followed by a delightful informal party in the home of Dr. and Mrs. Robertson immediately after the Christmas holidays. "Summer time" in mid-winter tempted the picnic lovers over and over to twilight lunches, and out-of-door parties.

With Easter came the egg hunt—then "all hands to the pump" for the annual banquet, where the most original program and the most delightful hours of the entire year were enjoyed.

Plans are being made for the new social calender and the B. S. U. cherishes the hope to contribute to the pleasure of the large group of young people who will make their home in South Texas State Teachers College for the Summer Session.

Stepping Along

During the year the college community has increased from 284 to 456, an increase of about 64 per cent.

The material properties have been increased by the addition of the first unit of the physical education building which is to be indeed a Temple of Health when completed. At present it is simply a gymnasium, a room, or auditorium space of about six thousand feet. Its present form is rather ungainly, but when completed the Temple will be a thing of beauty to match the main building in architecture, beauty, and use.

A winding walk from the east entrance of the main building to the southeast corner of the campus was plotted under the trail made by students in finding their nearest way from the corner of the campus to the building. The graceful curve suggested by the head of the art department is affectionately called the "McNess Walk." Mr. Warren, the general caretaker and supervisor of grounds, has lined the walk with flowers which at this writing are in beautiful bloom and a variegated ribbon of purple, orange, and white on a background of green. A rugged young tree torn from its native place in a forest seems to be struggling to make good as a companion to the flowers at its feet.

A cinder walk marks the track from the north side of the campus accommodating students from the new neighborhood to the north, and marks the way from Woodlawn by the President's home and continues across to the main building.

A double row of trees has been planted on the west side marking a broad driveway which is soon to be hard surfaced over which automobiles will find their way to a permanent parking ground just north of the auditorium. Out of several scores, not a tree seems to have been lost by the transplanting.

Flowers, shrubs, and trees seem to respond to the artistic touch of the gardener while they catch and distribute a beautiful spirit about the institution. The tall, stately palms transplanted as a venture seem to be struggling hard to live and renew their youth in this sea of beauty.

About three hundred young citrus trees under skillful care have been transplanted to the campus. Even now, though not more than a year old, after transplanting, many of them are fragrant with "orange blossoms" and a delightful promise of fruit in the near future.

These, our physical circumstances, are the home of the spirit of the young institution which is evolving from within by the expansion of courses dated from the beginning to the addition of new ones made possible by the growth of the institution itself and withal it is pleasant to say that the school itself is growing a soul which permeates all who come under its benevolent influence.

R. B. Cousins.

Echoes From Chapal

"Young people do not need anything more than they need social culture. Social culture can be obtained only by associating with cultured people."

"The School is the meeting place of all the past and the future."

"The whole world is an ocean of flux and flow with the waves dashing high with reference to commerce, religion, government, and social affairs. You young people must anchor the world while the waves dash high, for such is the glorious opportunity and tremendous responsibility of young men and women."

"No woman has a right to fold her hands and let somebody else earn her living."

"Do not allow yourself to occupy a negative attitude. The world hasn't time to hunt you up. Find friends and cultivate them. Friendship is one of the best things that comes out of college life. If you would have friends you must be a friend. A man has just as many friends as he is entitled to, just as many as he has earned."

"Young men and women in college ought to spend their time in company with good books or intelligent people so that the hours may be filled with that which will be of use in the years to come."

"This is preeminently a young man's day and a young man's world. The man who has gotten the most out of education is the man who forges straight ahead when the going is not good."

"The home trail ought to lead by the stage when the diploma is issued."

"Men and women ought to look their very best."

"There is nothing that can give you the gift of culture and refinement—it must be achieved in each individual case."



Things Freshmen Should Know

"The breakfast table must be made a safe place for humanity, an inspirational center of democracy."

"To delete breakfast from the day's program is sheer cowardice."

"People have talked about the simple life until we are sick of the name—But we are not sick of the thing, the real thing."

"Men build bridges and throw railroads across deserts, and yet they contend successfully that the job of sewing on a button is beyond them."

"The youth prefers to be addressed as a person of precocious maturity."

"The tactless person treats a person according to a scientific method as if he were a thing."

"Why do so many intelligent people who deal skillfully with matters of fact, make such a mess of it when they deal with their fellow creatures?"

"Wisdom cometh from the opportunity of leisure."

"Nobody is paid for being spontaneous."

"Education demands narrowing of all attention in the interest of efficiency."

"The delight of being a boy lies in the fact that the possibilities are still manifold."

"To really know him you must not only know what he is but what he used to be; who he used to think he was; who he used to think he ought to be and might be if he worked hard enough."

"The man with a literal mind moves in a perpetual comedy of errors."

Distinguished Visitors

Hon. Dan Moody	Dr. W. S. Gray
Hon. Lynch Davidson	Dr. W. M. W. Splawn
Hon. E. Polk Hornaday	Mrs. Percy V. Pennybacker
Miss Margie E. Neal	Mr. R. D. Green
Miss Jackson	Dr. H. T. Musselman
Miss Nora E. Reynolds	Mr. M. O. Flowers
Dr. Skinner	Mr. Henry Paulus
Miss Ruth Pennybacker	Mr. W. Z. Hayes
Mr. J. P. Reid	Senator Lewis
Hon. S. M. N. Marrs	Senator Floyd



Scholarship Society

At the sixth annual meeting of the Scholarship Societies of Texas Christian University February 26, 1927, a charter for a Scholarship Society was unanimously voted to South Texas State Teachers College.

The first steps toward the organization of a local chapter were taken March 19, when the four students eligible for membership met and elected the following officers: Oretha Cornelius, president; Mrs. May Chaney, vice-president; Verna Ross, secretary, and W. H. LeCompte, treasurer. The name for our local organization is The Robert Bartow Cousins Scholarship of South State Teachers College. As the purpose of the society is to further high scholarship, it offers an increased incentive to those who are already doing a high quality of work, and the local chapter promises to become a prominent organization on the campus.



The Fall of the Leaf

I hang trembling, fearing to take
 The leap into the abyss below;
 My comrades are gone, I am alone:
 And then, I too, must presently go.
 The moaning of wind, the rustle of leaves
 To me is like a funeral pall—
 But go I must for my time is near;
 I will silently glide to the carpeted halls
 Which spread beneath the sighing trees,
 Sighing for their departed leaves.

A sudden gust that makes me shiver;
 A snap, a parting of the stem—
 While plunging headlong I pause to think
 I'm taking the course which the rest of them
 Have taken. My ride is a joyous one;
 The most I'll make of my brief career;
 The wind is my pilot—I'm sailing away
 On airy boats far, far from here.
 Soon shall I land with grace and ease
 And make my abode with the rest of the leaves!

—May Delle Ferguson, '29.

"Scrap Book"



Sophomore Picnic

A moonlight picnic on Wilson's Lake was the outstanding feature of the Sophomore class for the past school year. On the evening of the picnic three cars of jolly sophomores left the college campus for a rollicking good time. Professors Warren and Reed chaperoned the crowd. Upon arriving at the lake all parties assisted in gathering wood for a huge bonfire which was the center of attraction until long after the delightful lunch of roasted weiners, toasted buns, sweet pickles, apples, and H²O.

On the return trip several of the students were given an added treat when the lights went out on Professor Warren's car. Two of the young ladies furnished amusement to their companions and at the same time rendered a service to the driver by lying on the front fenders and holding lanterns in front of the car.

Upon arrival at the college the group attended the basketball game which was in progress.



Freshman Kid Party

The "Kid Party" was the first daring attempt made by the Freshman class to get together after their organization in September. It may have been because we sincerely felt the significance of our station in life, or, more probably, it may have been just because it was the "first suggestion" that we chose this type of party. At any rate, the committees were appointed to plan the entertainment and refreshments and let the ball roll.

For refreshments each was given a paper sack containing candy, animal crackers, and chewing gum. A number of interesting games and contests had been selected and planned, but, as is often the case when so many children are thrown together, it was difficult to maintain order long enough to direct them. One of the most enjoyable events of the occasion was the fish pond, from which each child was permitted to draw a string at the end of which was tied a trophy of some kind.

Every one was dressed as a kid, the youngest of whom was six months old Tubby Cannon, who was looked after faithfully by his older sister, Imogene Rogers.

Mary Lester and Jack Mecklin were voted the most "childish," and would have received the prizes had not some naughty boys stolen them away before the party was over.

Junior-Senior Banquet

On Tuesday evening, April 19, 1927, the Senior Class was entertained by the Juniors with a formal banquet in the College forum.

This banquet was the outstanding social success of the year. With its excellent food, good music and a splendid program of speeches and song, it was the tribute of the Junior Class to the first students to graduate from S. T. S. T. C. and a testimonial of their feeling of fellowship and good will toward those of this first Senior class.

The following program added greatly to the evening's entertainment.

1. The I. Q. of a Senior from the viewpoint of the faculty—Dr. Cousins.
2. Reading—Miss Stewart.
3. The I. Q. of a Senior from the viewpoint of a Senior—Mr. Hensleigh.
4. Vocal Solo—Mr. Engle.
5. The I. Q. of a Senior from the viewpoint of a Junior—Letha Agnew.
6. Future of Seniors—Ccovis Hickman.



Juniors and Sophomores Entertained

Dr. and Mrs. R. B. Cousins entertained the Junior and Sophomore classes with an informal party on Saturday evening, April 9, from eight to eleven.

Misses Maurine Hvistendahl, Edith Boyd, and Wilma McAferty rendered pleasing selections as readers. Mr. A. H. Engle sang "Kathleen Mavourneen," and "Believe Me If All Those Endearing Young Charms," after which Miss Hvistendahl and Mr. Garner played informally a series of piano numbers.

As gentlemen were in the minority the bachelor sponsors, Messrs. Engle and Jeff D. Smith, were noticeably popular.

Delightful refreshments consisting of pineapple sherbet and ginger ale, cakes, and mints were served, to the two classes, the sponsors, Miss Alexander and Hunnicut, Messrs. Reed, Engle and Jeff D. Smith, and to Miss Brown and Robert B. Miller.



Valley Club Picnic

The Valley Club is not only the largest in number of any club on the campus but it is one capable of having most fun. Forty picnic lovers and all sponsors enjoyed a real picnic and unique out-door program on October 14th. There was served as refreshments a real South Texas "spread" a part of which was cooked at the point of a mesquite limb over a bon fire.

The songs that were sung, the plans that were made, and the spirit that was manifested were expressive of loyalty to the College and of a devotion to the Valley.

BABY LAND



AIN'T I SWEET?



BEGINNING EARLY.

Powder



TIME TO RETIRE.



MA, PLEASE GET QUIET.



ALPHA



OMEGA



OOH! WILL IT BITE?



DA. DA



BROWN EYED BABY



BUNNY DEAR.



CUNNING BABY



I'M SOME BODIES' BABY.



SOUTH TEXAN BABY.



STARTING EARLY FOR ATHLETICS

F. BEAVER





JACK OF MIGHTY STATURE.



TWO SATISFIED COLLEGIATES.



AIN'T I SWEET?



JUST BERYL

VANITY FAIR



I LOVE I.

T. BEAVER

Seniors Entertained by President and Mrs. Cousins

The Seniors were guests at a very delightful party at the President's home on March 19th. In an informal manner everyone was ushered from room to room in search of material for a pictorial autobiography. After a careful selection of pictures for pages suggestive of—myself, my first photo, school days, my best pal, my hobby, my ambition, and my finish—the booklets were passed around. The judges pronounced them clever. Various other games were played in which every guest participated.

At the psychological moment Mrs. Cousins ushered her guests into an attractively decorated dining room where Miss Edith Cousins served delicious frozen punch, cakes, and mints.

Those sharing with the Senior class the pleasures of the evening were Mr. Conner, Coach Smith, Mrs. Dickens, and Miss Splawn, class sponsors, and Mrs. Smith and Miss Stewart.



Senior Picnic

The slogan "June Brides and Roses" was altered anew when Miss Eugenia Beard, Editor-in-Chief of South Texan, critic teacher, and a pride of the Senior Class announced her wedding for January. The Seniors declared a holiday in honor of the bride January 7. The vacation took the form of a picnic at Wilson's Lake. The building of the bonfire the arrival of the groom, and the spreading of the lunch were preliminaries to an enjoyment real and pleasing.

After repeated helpings of appetizing food ranging from pickles to pie, a real wedding cake was brought from behind a mesquite. The bride was fortunate in getting the dime and the ring—the less fortunate girls got the wishbone, the thimble, or the penny. At the moment of highest interest, Melvin Weller, Class President, presented the bride with an electric percolator, the gift of the class. That all pockets were then filled with cookies and apples (the left-overs) is evidence enough that the Senior holiday had been far more than a joyous one.



Class Prophecy

ALBERT DALES HENSLEIGH



Once upon a time, as I neared our Institution of Learning, I was terrified to hear the sound of a great sobbing. Immediately I began running from room to room and at last upon going to Dr. Cousin's office I threw myself at his feet and cried, "Oh, good President, what is the cause of all thy soul's anguish? Answer and tell me before I beat out my brains on thy cell's floor." Whereupon our President rose to the height of a giant and towering above me made answer, "Oh foolish and perverse Senior, canst thou not distinguish tears of joy from tears of sorrow? Yesternite as I lay sleeping I was carried in the arms of Morpheus twenty years into the future and I beheld our wonderful college as the largest in the state, yea second only to Duke University. Kingsville's population had reached the 35,000 mark and the college was fast pushing the town over on the east side of the tracks.

As I looked upon old familiar scenes I beheld the faculty of S. T. S. T. C. for 1947. There was Frances Beaver, who had once caused me many hours of worry, ably filling my shoes and in her office sat Carrol Hornburg clicking away on the typewriter, and lo Melvin Weller had succeeded Miss McCleod as head of the Latin Department and as I looked upon him, he sat peacefully constructing a Caesar's bridge. Across the hall from Weller's place of business, we found Mrs. King teaching the "Hunt and Peck" method.

Entering the Home Economics rooms my joy was full beholding the person of W. H. Korges enveloped in the pure and spotless uniform busily compounding a cake while Muriel Buchanan as his assistant was freezing a custard.

Passing the Biology room, I was astounded but jubilant to hear Verna Ross explaining the missing link between man and monkey as she calmly dissected a cat.

In Dr. Nierman's oxfords stood Oretha Cornelius orating to a class of 499 on the difference between calico and burlap.

Meeting Mr. Eaves in the hall I asked him to guide me, as I felt almost lost among the strange new buildings. He told me that Mr. Engle was running a chicken ranch and that he had just won a five foot silvercup in the singing contest of the Rhode Island Reds. Their perfect enunciation had won the day. The manly lad led me to see Eugenia Baird Crosley who had succeeded Prof. Sawyer as head of the Education department and who was advocating the use of the hickory stick in our colleges as a stimulus to higher learning.

Just then the strains of wonderful music filled our ears and leading me to a window Isaac pointed out a beautiful edifice as the conservatory of music. Era Harper is head of the Department of Music now. "Where may we find Miss Baugh?" I asked. "Miss Baugh has gone to swim the Mediterranean sea, and Mr. Harvey is dean of men and women," he said.

He then led me to the temple of athletics and there I beheld Coach Vaughn Buchanan putting her football squad through strenuous rope skinning exercises and feeding them raw meat in preparation for the Schreiner game of the morrow.

In the Medical room of this same magnificent building I found Dr. Callie Moore advising a young lady not to play football because it would ruin her complexion.

As we emerged from this building whom did we see but Belva Williams who was Agricultural head returning from giving the herd of fifty Javelina mascots an airing.

Approaching the building of Mechanical Arts I recognized the voice of Ona Lee Warner giving a lecture on "The Use of the Hammer and Saw," and I was dumb-founded to see the department she had built up single-handed.

There our honored president stopped short, and I could see that some great pain was in his heart as he buried his hands in his face. I begged him to finish.

"And you—and you—, he began, you had Ketty's position because you had spent so many long hours over your Latin that your brain had evaporated and as you pushed your broom or flourished your dust cloth you chanted, "Goudamus Igatur E Pluribus Unum," and while I am sad when I think of your case, yet I can't be bothered. I must rejoice for those who have climbed the famous ladder.

The Main Difference

Mr. Allen had just informed the Pullman agent he wanted a berth.

"Upper or lower," asked the agent?

"What's the difference?" asked Mr. Allen.

"A difference of fifty cents in this case. The lower is higher than the upper. The higher price is for the lower. If you want it lower you'll have to go higher. We sell the upper lower than the lower. Most people don't like the upper although it is lower on account of being higher. When you occupy an upper you have to get up to go to bed and get down when you get up. You can have the lower if you pay higher. The upper is lower than the lower because it's higher. Are you willing to go higher? It will be lower."

Mr. Allen had fainted.



Great Scott, I've forgotten who wrote Ivanhoe," whispered a Sophomore to his neighbor on examination day.

"I'll tell you if you tell me who the dickens wrote 'The Tale of Two Cities,'" his neighbor whispered back.



Mr. Hensleigh: Mr. May offered me an interest in student help today—

Mr. Hornburg: He did!

Mr. Hensleigh: Yes, he said if I didn't take an interest pretty soon, he'd fire me.



Te han dicho un dicho, dicho que no he dicho yo, que si yo lo hubiera dicho, bien dicho estaria el dicho por haberlo dicho yo.





Opal Robbins, Winner

Ruby Alta Harrel

Latin Team: College representatives at the Latin tournament held in Brownsville, Texas, April 1, 1927.

Sancta Nox

Alma nox, sancta nox,
Natalis est Cristi.
O puer laudabilis
Dulcis et amabilis
Matris nunc in sinu,
Matris nunc in sinu.

Alma nox, sancta nox,
Pastores veniunt.
Alleluia cantant caeli
Beatissimi angeli
Pax et hominibus,
Pax et hominibus.

Alma nox, sancta nox,
Veniunt a Saba
Tus et aurum et myrrha
Regum splendida munera,
Christus est apud nos,
Christus est apud nos.

The Blue and Gold

— arr. Engle

Mid

glow of blue-bon-nets 'neath sunny skies In Tex-as vale and

prai-rie, - Lin-ger the mem'-ries of school days old In

South Tex-as story and song, -- The Cam-pus, the palms, the

wind-ing walk, The deeds of val-or might- All

min-ute in praise of old Col-lege days While we sing to her

loud and long; - Hail to the land that gave us birth,

Hail to the flag she flies; Hail to our state, the best on

EL RANCHO

earth, Hail to her sun-ny skies, - Hail to our Al-ma

Mat-er, dear, - Bright as the stars a-bove; Hail to the

Blue and the Gold we cheer; S. T. C., thee we

love Al-ma Mat-er, S. T. C., Thy sons will

ne'er for- get; Fond mem-o-ries of stud-ent days

cling round a bout us yet; The years shall prove un-

chang-ing love to thee beyond thy ken, The Blue

and Gold we'll eye un-fold in fullest love to thee;

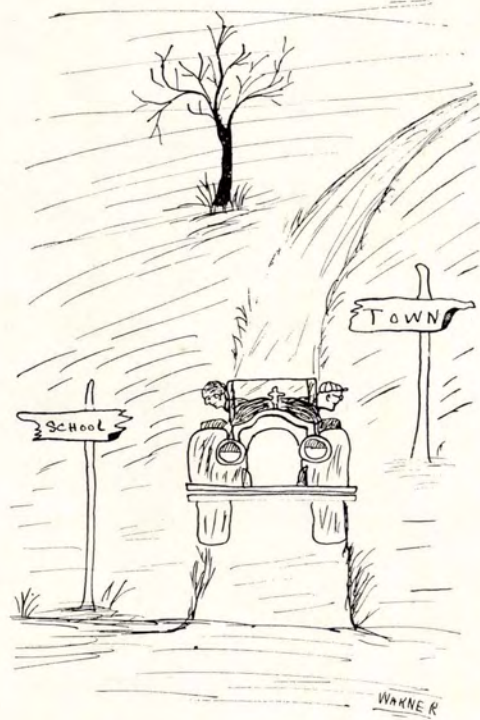
the Blue and Gold we'll eye un-fold to S. T. S. T. C.

Our Thanks

The statement made by President Cousins, "El Rancho is the classic of the year," has been a very stimulating inspiration to the staff. Under the light of an expressed confidence of the faculty and student body, the new staff entered in September upon what was felt to be a great adventure. Wee after week the co-operation of organized forces lent aid, until every member of El Rancho staff realized of a truth the meaning of the spirit of democracy which characterizes the life of South Texas State Teachers College.

We at this time desire to thank all who have so graciously helped to make the publication of the 1927 El Rancho possible.

THE STAFF.



ADVERTISEMENTS

OUR READY-TO-WEAR

Dresses
Millinery
Underwear
Shoes
Hosiery

We give particular attention to the wants of Girl Students. This is the store where quality comes first. Only high class merchandise in the most approved styles is offered.

Men's Department

The most complete in Kingsville. Clothes and Furnishings for College Boys our specialty.

You'll Like to Trade at
This Store

Raglands
DEPARTMENT STORE



BRADLEY AND SPALDING SUITS

We are exclusive agents in Kingsville for Bradley Bathing Suits. All Colors Fast, and Fabrics are Pre-Shrunk. They must give Satisfaction.

Full Range of Sizes for Men, Women and Children
All Colors

The Kingsville Lumber Company

*Kingsville's First and Foremost
Business Establishment*



Building Materials, Plumbing Supplies, General Hardware, Tin Work, Wall Paper, Paints, Farm Implements and Equipment, Harness, Saddles, Sporting Goods, Radio Receiving Sets and Supplies, Etc.



Prompt Service

Best Quality

Fair Prices

Free Plan Service

Home Building

Easy Terms

:: Phone 40 ::

Harrel Drug Company

Complete Drug Service

KINGSVILLE - - TEXAS

Do Not Overlook Good Banking Connections

All who bring their business here are
assured of courteous treatment and
appreciative attention.

We'd like your business. You'll like
our service.

Robert J. Kleberg & Company

BANKERS

(Unincorporated)

REAL ESTATE

In the City of Kingsville, Kleberg County, Texas.
Speaks for itself to the Investor, with
a very loud noise.

Compare this fast growing city with its 8500 population together with much improvements, and the amount of ready cash pay rolls each month, with any city twice the size and you will picture what will be the coming city of the Gulf Coast Section. Our Company had the foresight for years and have prepared to offer you Real Estate Bargains all over the city with the ONLY CHOICE residence building sites that are being offered for sale. We also have acre tracts close in and blocks which are being priced right with very easy terms.

Call On

The Kingsville Land and
Investment Co.

And Ask for

R. G. (Rudy) Flato

Phone 260

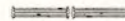
Pleasure In Merchandising



A great part of the pleasure in merchandising lies in the feeling of a duty well done—of knowing one's patrons are true and loyal.

In such a spirit we want to thank the students and faculty of the South Texas State Teachers College for your patronage and to express the wish of serving you even better in the future—increasing our pleasant business relationship.

We appreciate your good will and the confidence it implies in "Your Store" and our service—that's why we say there's pleasure in merchandising.



Meehan's
Chaparral Street at Peoples

"Your Store"

Corpus Christi - - - - - Texas

Kington Studio

J. R. KINGTON, Prop.

Official Photographer

"El Rancho 1927"

"Photographs Live Forever"

The Fun Shop

Mr. Porter: What is a ninety degree angle called?

Bob: A right angle.

Mr. Porter: Pretty good.

Bob: Pretty good, me eye—that's what I call perfect.

Prof. Reed (in Biology class): The class will now name some of the lower species of animals, starting with Frank Warner.

Ollie: Why, O'Gene, you've got your shoes on the wrong feet!

O'Gene: But, my dear, they are the only feet I have.

Miss McLeod: Who was Homer?

Mr. Harry: The guy that made Babe Ruth famous.

Prof. Allen: That's the fourth time you have looked at Smith's paper.

Billy G.: Yeh, but Smith's such a punk writer.

Byron (very frantic): Oh, Mr. Heinmiller, I am right at the door of flunking.

Mr. Heinmiller: Don't worry, I'll pull you through.



KINGS INN - QUEEN

Our Business is to
ENTERTAIN YOU

We hope that each student of S. T. S. T. C. will carry thru life memories of many happy moments spent as our guest.

S. L. Stokes
Resident Manager

Kingsville Steam Laundry

"Quality First"

W. H. McCracken, Proprietor

Phone 5

Jokes

Grace R.: Young man, can I get into the park through that gate?

Ray D.: Guess so, lady, I just saw a load of hay go through.

Mr. Firnhaber: So you wish to marry my daughter, eh? So you believe, young man, that you could support a family?

Melvin W.: Well, eh-er-that is—you see sir, I was only figuring on Jane, but I suppose if it is necessary I can take care of the rest of you."

COLLEGE CONFEC

Home of good things to eat and drink.

Curb service our specialty

I'LL BITE

Mr. Porter: A fish's head plus half his tail equals nine inches. How long is the fish?

When You Think of Service
Think of

Highway Motor Sales Co.

Texaco Gasoline and Oils

L. W. Adams, Prop. Phone 200

Jokes

Professor Reed (coming upon a youthful angler sitting on the bank of a stream): Adolescence, art thou not endeavoring to entice the finny tribe to engulf in their denticulated mouth a barbed hook, upon whose point is affixed a dainty allurement?

"White Rose": No, I'm fishin'.

This space is dedicated to those merchants who saw fit not to advertise in this book, the official yearly publication of the students of the South Texas State Teachers College. Do they deserve our patronage?

The Business Management

For Staple and Fancy Groceries

—Call—

SAM SELLERS

Phone 73-74-75

Your Trade Appreciated

W. L. JOHNSON

Dry Goods - Clothing - Shoes

Headquarters for Students

The Store Where You Can Do Better

KINGSVILLE, TEXAS

South 6th St.

CITY DRUG COMPANY

West Side

Full line of drugs and stationery
Etc., Etc.

Phone 125

Free Delivery

Sheiks and Shebas



"The Proctors"





South Texas State Teachers College

Kingsville, Texas

The Nearest, the Most Beautiful,
the Best

D. L. EDWARDS & SON

Groceries

Meat Market - - Bakery

Compliments of

FIRST NATIONAL BANK

Your Patronage Appreciated

Jokes

A schoolmaster wrote the following criticism on the edge of William Conner's card:

"A good worker, but he talks too much."

When Mr. Conner signed the report and sent it back, the card bore in addition to his signature these words:

"You should hear his mother."

ECHOLS CASH STORE

Dry Goods
Shoes and
Ready-to-Wear

Phone 98 414 E. Kleberg Ave.
Kingsville, Texas

ELLIOTT'S GARAGE

Phone 468 Seventh St.
Kingsville, Texas

Absolute Satisfaction

TOUTE SUITE TAILORING CO.

Phone 111

Authority on Ladies Work

"For Men Only"



C. D. JOHNS

Attorney-at-Law

KINGSVILLE - - TEXAS

GUS KOWALSKI

Attorney-at-Law

KINGSVILLE - - TEXAS

JUDGE M. C. REESE

Attorney-at-Law

KINGSVILLE - - TEXAS

E. H. CRENSHAW, JR.

Attorney-at-Law

KINGSVILLE - - TEXAS

DR. J. V. CHANDLER

Dentist

KINGSVILLE - - TEXAS

We are glad if your picture appears
in every place you expected.

—————
We thank every one who has put
an advertisement in this section of
our book.

—The Business Management.

DR. C. A. ROBERTS

Dentist

KINGSVILLE - - TEXAS

—————
(Space donated anonymously)

Kleberg Co. Abstract Co.

All acreage and city lots in
Kleberg County

Specializing in Kleberg County Land
Titles for past twelve years

T. A. SIMONS, JR.
Kleberg Bank Bldg. Phone 488

KINGSVILLE, TEXAS

FIRST STATE BANK of Kingsville

Save and Have
We appreciate your business

KINGSVILLE GROCERY COMPANY

It's Easy—Just Phone
191—PHONE—193

Headquarters for
Orthophonic Victrolas and
ELECTRICALLY Recorded Records
South Texas' Best Furniture

Allen
FURNITURE Co.
CORPUS CHRISTI - KINGSVILLE

and Music Stores

Keep fit for your College work by

EATING VELVET JERSEY ICE

CREAM and BUTTER

DAIRY PRODUCTS CO.

Mr. Sawyer: A fool can ask more questions than a wise man can answer.

Eva West: That is why we all flunked.

Walter B.: Has Bill Lee registered here?

Mr. Connell: I'm no mind reader, Billie-e-e who?

THE KLEBERG COUNTY COMMERCIAL CLUB

Invites You to Make

S. - T. - S. - T. - C.

YOUR COLLEGE

for Economical Transportation



Compliments

OF

Weller Motor Co.

Kingsville, Texas

Phone 453

The Kingsville
Publishing Company

Kingsville, Texas

Specialists in Fine Printing

Especially Equipped for Printing
Color Work

We printed this Annual from Cover to Back
in our plant in Kingsville



L. L. RADFORD'S

Jewelry Co.

Diamonds, Watches

Jewelry, Clocks

Eyes Examined

Glasses Fitted

Edison Phonographs

Records

"Animal Crackers"



"Panther"



"Wildcats"



"Roughrider"



"Javelinas"



"Edith"



"Aggie"



"Who's-Who?"

Continue Your
PROTECTION

—Thru—

KINGSVILLE
INSURANCE AGENCY

Marcus Phillips, Manager

LYNCH DAVIDSON & CO.

DAVIDSON
Certified Lumber
Is Worth More

R. E. YOUNG & CO.

INSURANCE
LOANS
REAL ESTATE

C
H
R
Y
S
L
E
R

LOHMAN

LIEBERMAN'S

Bostonian Shoes Vanity Clothes

Always Something New

Dave D. Le Vine, Mgr.

Ladies' Ready-to-Wear Snappy Millinery

KINGSVILLE
FURNITURE COMPANY

"Odds and Ends"



**GUARANTY TITLE
COMPANY**

Affiliated Through Re-insurance with

**NEW YORK TITLE AND
MORTGAGE COMPANY**

Our Policy Protects

Combined Assets 25 Millions
Flato Building Phone 25

Compliments of
Guarantee Mercantile Co.
Headquarters for Students
Phone 130

Home Builders

Home Lumber Co.

South Sevents St. Phone 29

UPON YOUR SATISFACTION
DEPENDS OUR SUCCESS

WE WANT YOUR TRADE

All Teachers and Students will be
given 10 per cent discount on their
purchases

We always feature the newest styles
At Corpus Christi

THE SIMON-COHN CO.
Mail Orders Solicited

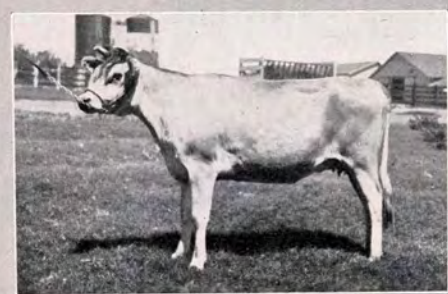
LOUIS S. PIERCE

Ladies' and Gents' Furnishings

Shoes::Clothing::Hats::Etc.

Courtesy Quality Service

Kingsville, Texas



The Jersey as a Teacher

A short time ago we were in conversation with a Jersey breeder, one who has made rather an outstanding success of Jersey dairying; that is, he has put his Jersey herd upon a money-yielding basis from a standpoint of production.

Although, probably the greatest thing we learned from this Jerseyman is that while his Jerseys returned a profit and made his family extra money, they were the means of an education for his growing children, giving them a knowledge they could not obtain in any other way, a something that will go down the years of their lives with them as a something big, good and great.

It is our belief that there is no part of the education of these children which will mean more to them, bring them greater comfort, carrying them through the years with so steadfast and staunch mind to do the right thing, and treat all their problems with the thought and carefulness, which will insure them success of the most noble kind, as will this Jersey education years hence. When they have perhaps, wandered far from home in the pursuit of their chosen professions, to become lawyers, manufacturers, or of any other profession, they will recall their days of childhood and youth and the simple pleasures and the love which they feel for their Jersey charges now. These will be numbered among their most cherished memories.

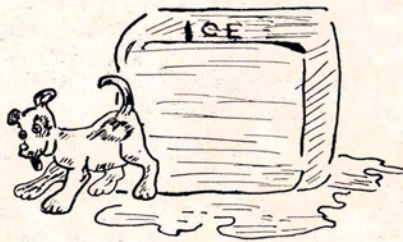
Indeed there is an education for the children in working with a herd of Jerseys. The love for dumb animals comes with a close association and work with their Jerseys. It teaches them to be considerate of creatures, and therefore considerate of mankind. It teaches that care and kindness and gentleness are prime requisites which add character to those who practice them, and cheer and warmth to those with whom they may come in contact.

Santa Gertrudis Jersey Farm

Kingsville : : : : Texas

Robt. J. Kleberg,
Prop.

Oscar Anderson,
Supt.



My Tale is Told

TRADITION



TRADITION · inspires · every
SWECO · craftsman · to
give · to · every · detail · of · the
engraving · art · a · painstaking
patient · attention · that · lends
precious · quality · to · his
workmanship

SOUTHWESTERN
ENGRAVING COMPANY
FORT WORTH · HOUSTON · DALLAS
WICHITA FALLS · TULSA · ATLANTA

