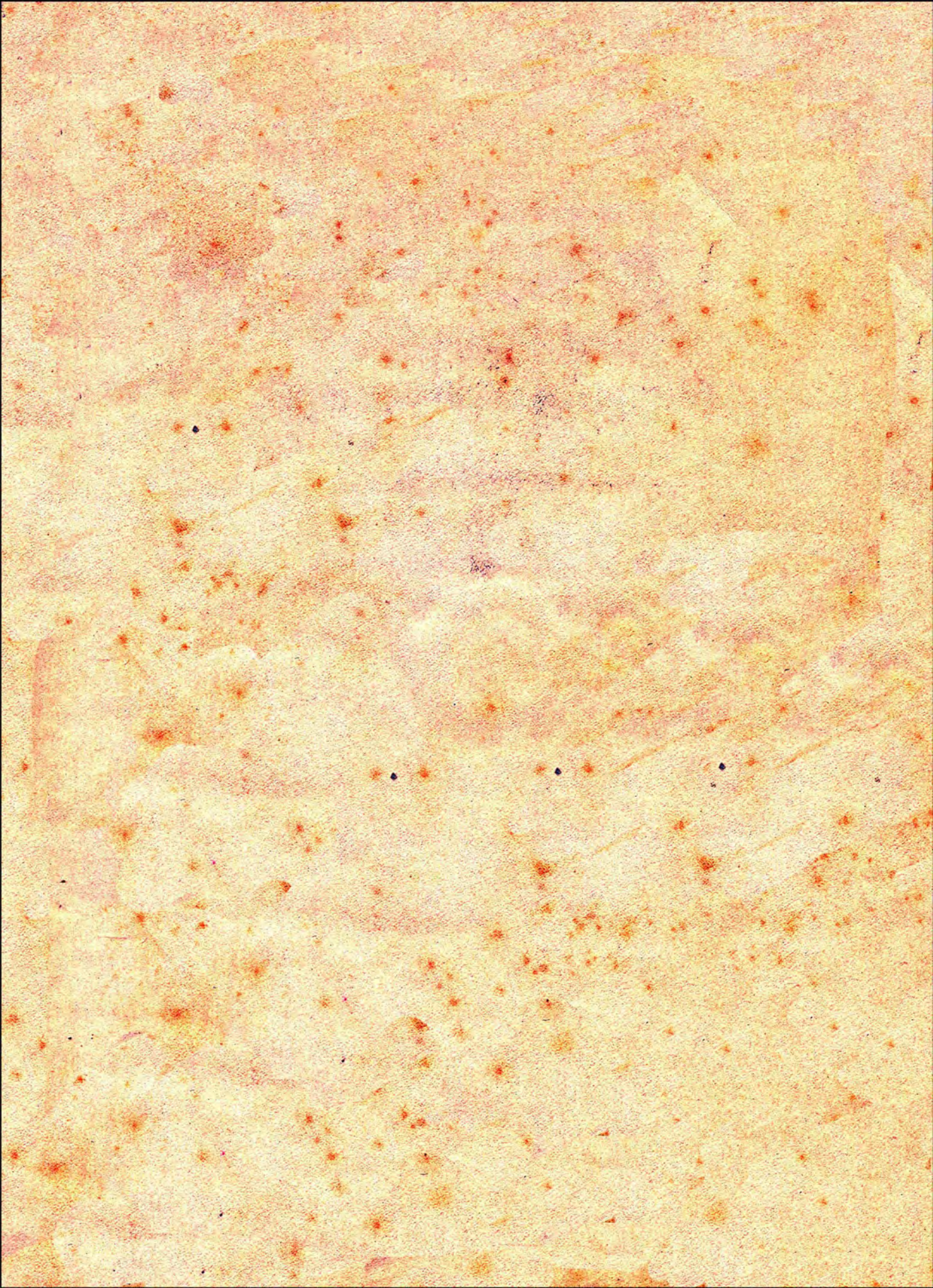


1928



EX LIBRIS







LONG BEFORE THERE WAS THE STATE CALLED "TEXAS", THERE WERE THE PLAINS AND THE FOREST. HERE, BEFORE WHITE MEN TROD THE SOIL, THERE LIVED AND LOVED A PEOPLE, ROAMING THESE VAST STRETCHES OF OUR STATE—TO THEM A NATION. PIONEERS

BEFORE WHITE MEN TROD THE COURAGEOUS, ADVENTURESOME STRETCHES OF OUR STATE—TO WERE THEY—THE TEJAS INDIANS.



# EL RANCHO

1 9 2 8

South Texas State Teachers College  
Kingsville

FIRST CONQUERORS OF THE NEW WORLD, FIRST COLONIZERS, FIRST CIVILIZERS,  
FIRST CITY BUILDERS, FIRST TEACHERS WERE THE SPANISH. THEY ESTABLISH-  
ED SETTLEMENTS AND MISSIONS THROUGHOUT SOUTH TEXAS IN THE  
EARLY 18th CENTURY. PIONEERS WERE THEY—THE SPANISH.



# COPYRIGHT

Maurine Hvistendahl  
Editor

Frank Warner  
Business Manager

C O M M E R C E



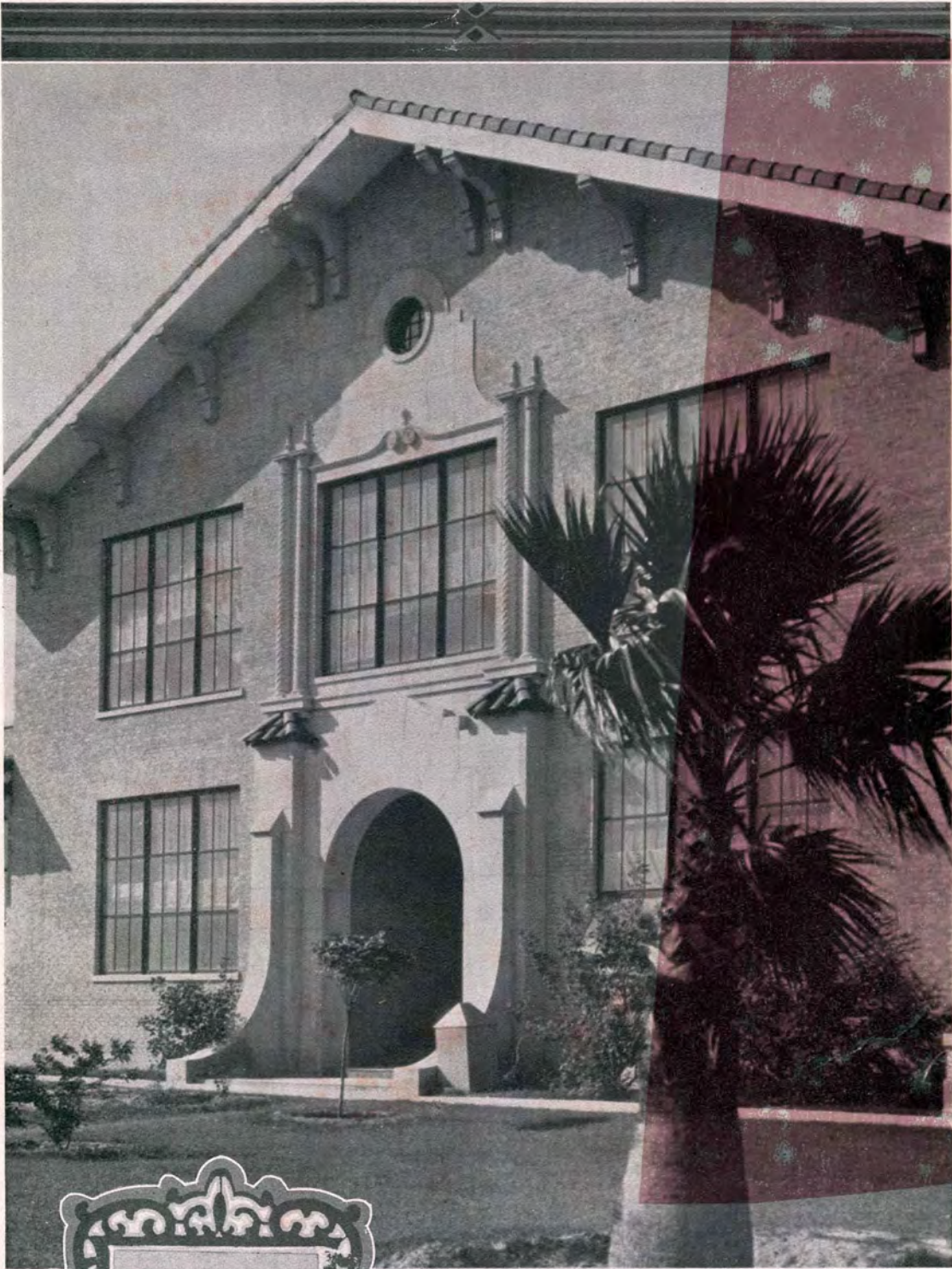
T H E C O L L E G E







El Edificio  
Principal



Termino  
de la Vereda  
de las Petunias



LURED BY THE RUMORED TREASURES OF THE NEW WORLD CAME THE FRENCH TO TEXAS. LA SALLE, DAUNTLESS EXPLORER, ACCOMPANIED BY A SMALL GROUP OF COURAGEOUS COUNTRYMEN, ESTABLISHED A COLONY ON MATAGORDA BAY IN 1685. PIONEERS WERE THEY—THE FRENCH.



# EL RANCHO

1 9 2 8



PUBLISHED BY THE STUDENTS OF  
SOUTH TEXAS STATE TEACHERS COLLEGE  
KINGSVILLE TEXAS

THE REPORT OF FINE LANDS, THE DESIRE FOR HOMES, ATTRACTED AMERICANS TO TEXAS. IN 1819 STEPHEN F. AUSTIN LED THE FIRST LARGE GROUP OF SETTLERS INTO THE STATE, LOCATING IN THE REGION BETWEEN THE BRAZOS AND COLORADO RIVERS. PIONEERS WERE THEY—THE AMERICANS.



## ORDER OF BOOKS

The College

Classes

College Year

Features of the Year

Athletics

Humor and Advertisements

FOR TOMORROW—IN COMMERCE—IN THE LIBERAL AND FINE ARTS—IN ENGINEERING—IN JURISPRUDENCE—IN AGRICULTURE—THERE WILL BE LEADERS IN GREATER FIELDS. PIONEERS THEY ARE NOW—THE STUDENTS OF TODAY.



# DEDICATION

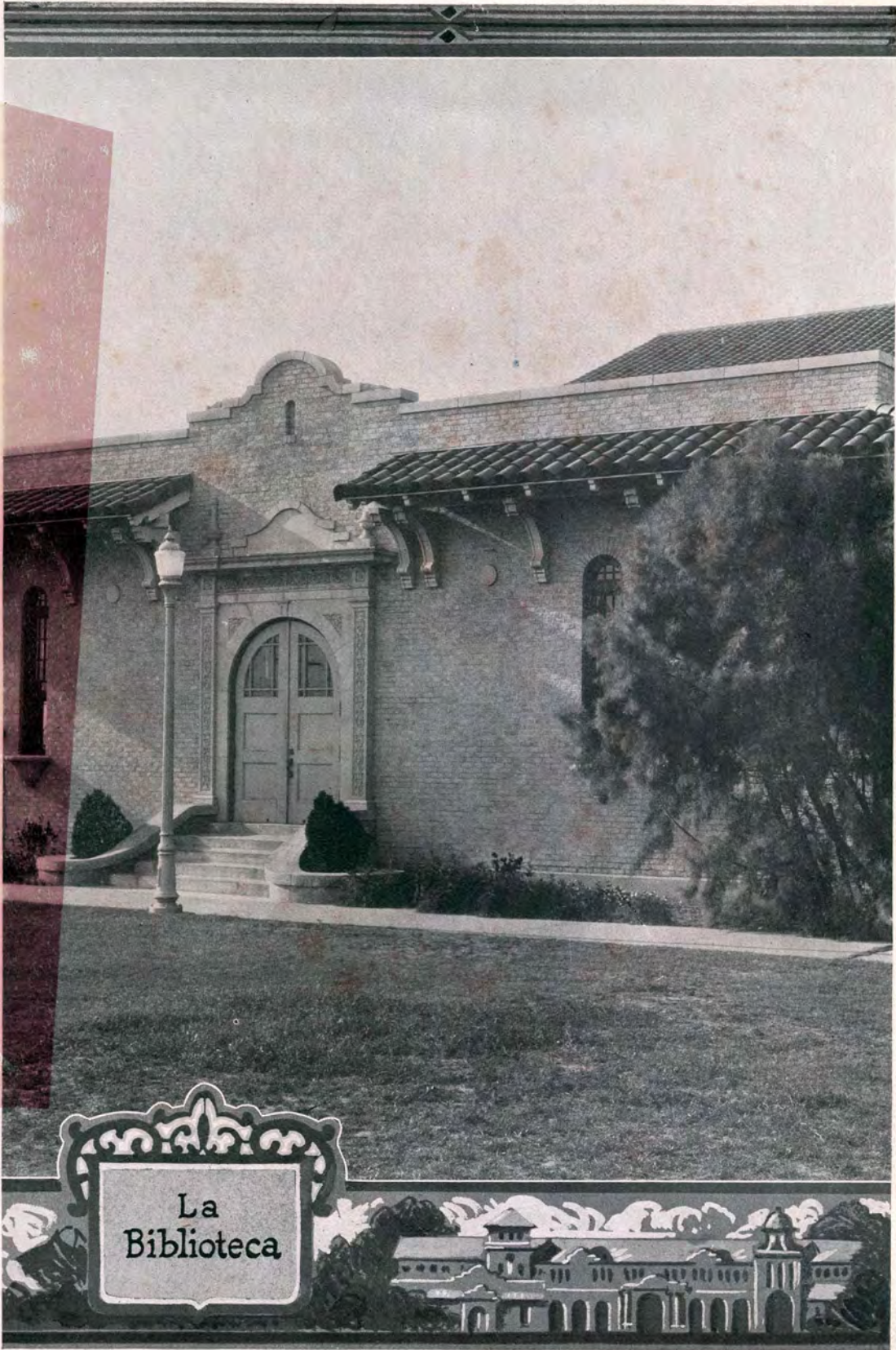
to

The Spirit of S. T. S. T. C.

Her beautiful youth, her virile faith and progress,  
her democratic friendliness, her comradeship  
akin to fireside love, we dedicate this the

1928 El Rancho





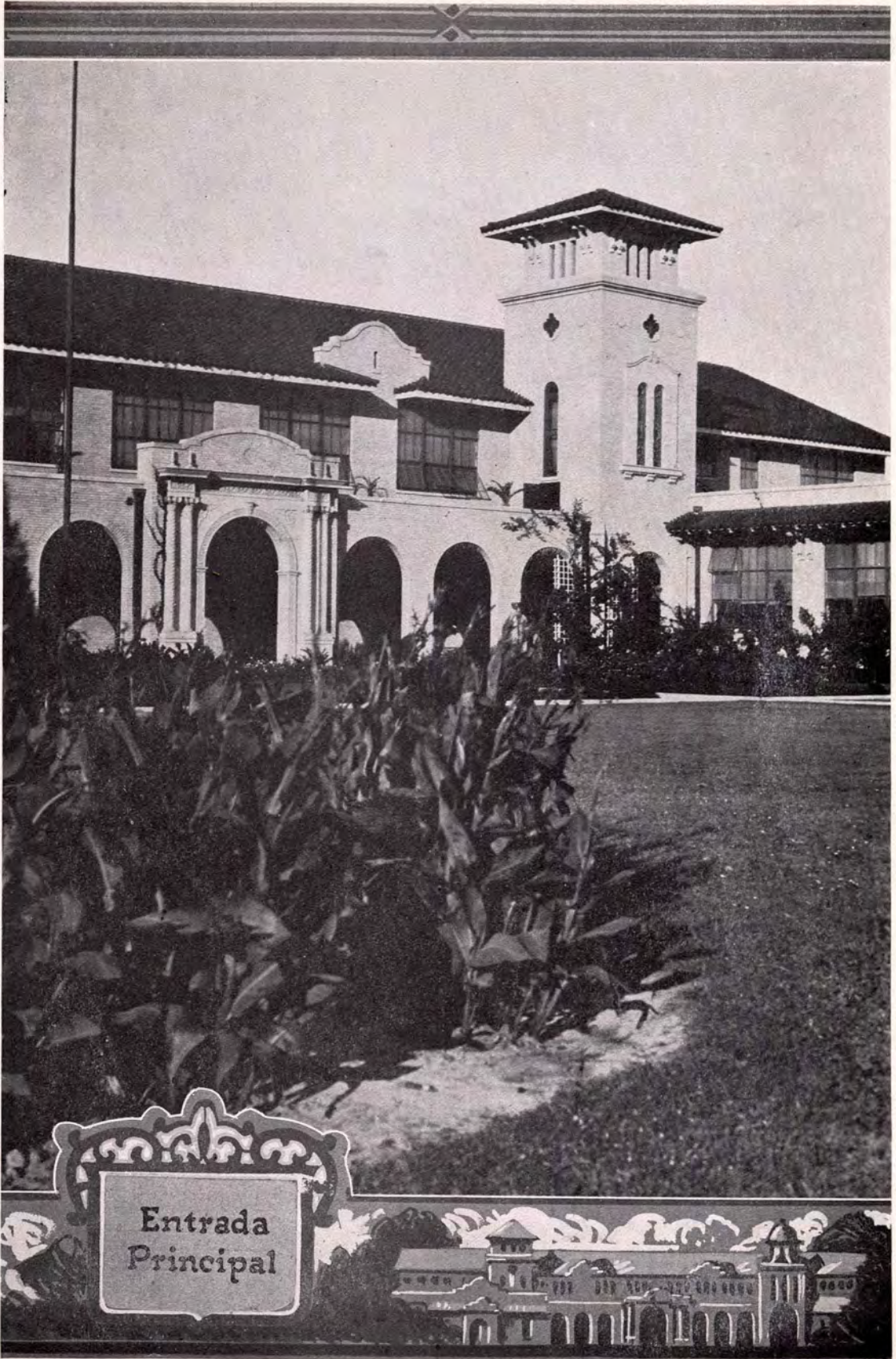
La  
Biblioteca





El Foro

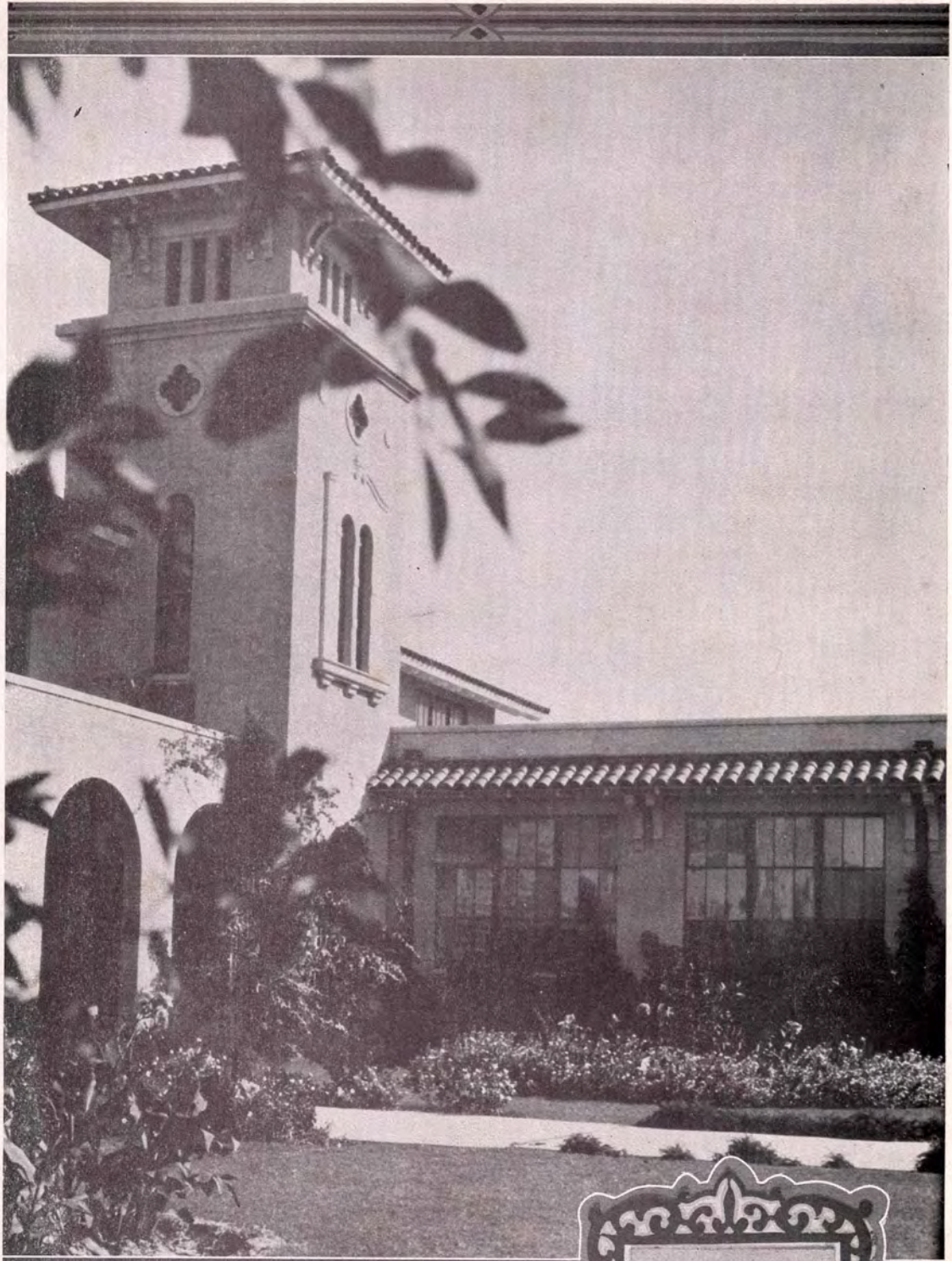




Entrada  
Principal



El Rencón  
de la  
Torre del Oeste



El Rencón  
de la  
Torre del Este



La Casa  
del Presidente

The 1928 EL RANCHO



ADMINISTRATION



The 1928 EL RANCHO



Dr. Robert Bartow Cousins



## Our Students.

A college course shows off our several notable advantages with which to begin the second business of life. Among these are, an elevated point of view from which to see life and its problems; a worthy objection to give one's life to trend; talents discovered and their development begun; passions subordinated to high ideals and a discipline will to put first things first.

But the greatest advantage comes with the new birth, choice of spots of all the world broadens us in the library and in the laboratories, quickening us. Eminent men and women appeal to us from platform and press. Worthy associations jostle us in the crowded corridors. We awake and accept its challenge to high endeavor.

The new birth! Alma mater! Yours, R. B. Cousins





## Board of Regents

The staff of El Rancho finds pleasure in presenting the photographs of the members of the Board of Regents of the State Teachers Colleges and of their most efficient Secretary. The college community finds commendable pride in the collective efficiency of the board in the handling of college affairs, and always enjoys the visits of the members, because of their unflinching attitude of sympathy and of their delightful social gifts and graces.

Top Row—Flowers, Turner, Paulus.  
Bottom Row—Hayes, Mayhew, Gulke, Martin.



## Dean of Women

Our Deans of Women believe in the young people of today. They are in sympathy with the interests and ideals of youth, and it is their earnest desire to help all students of South Texas State Teachers College sympathetically and understandingly to attain to the highest standards in academic, physical, professional and social life.

They are always ready and willing to promote, help and co-operate with all worthwhile student activities, and it is their chief interest and concern to see that every student gets the best possible good from college life.

Miss Lila Baugh

Miss Edith Cousins



## Administration

---

R. B. Cousins .....	President
Lila Baugh .....	Dean of Women
L. F. Connell .....	Registrar
R. E. May .....	Business Manager
Ann L. Kirven .....	Librarian
Leona Hoop .....	Secretary to the President

The officers of administration have only one purpose in view, and that is, to promote at all times the highest interests of the students and of the institution. The officers recognize but one method of doing this, namely, through SERVICE.

---

May

Hoop

Kirven

Connell



## Education

The aim of the Department of Education is to help make better teachers, principals, and superintendents. Some courses are given that are basic to all. Many other courses are highly specialized. An attempt is made to give enough general work so that every student will get a thorough foundation in the field, and enough specialized work so that he may become a specialist in some one branch. The student will find courses in the theory and history of education in which clear analysis and straight thinking are of chief concern. He will also find courses that teach definite skills. These skills vary from the planning of a single lesson to the making of a curriculum or the management of a school system.

The courses in education and the student teaching work proceed simultaneously in such a way as to enable the student to do better teaching in consequence of his classroom work in the college, and also to enable him to gain through his teaching a basis in experience for fuller appreciation of his professional and academic courses.

In order to make the courses in education meet the requirements of various forms of public school service, specialized courses are offered for prospective teachers in the primary, intermediate, and upper grades, as well as the junior and senior high schools.

Top Row—Drewry, Sawyer, Brown, Gregory.  
Bottom Row—Baugh, May, Bailey, Cousins.



## English

The Department of English offers courses in grammar, composition, journalism, literature, and materials and methods. The freshman work stresses fundamentals of correct writing and speaking, with extensive reading in a variety of literary forms. The journalism gives a practical knowledge of newspaper work, with experience in writing for publication. In literature are offered a survey of English and American literature, early, Elizabethan, and recent drama, romantic, Victorian, and recent poetry, nineteenth-century and recent prose, mythology, the short story, the novel, and such individual authors as Shakespeare, Browning and Tennyson. To provide materials and methods for teachers in the public schools, well-graded courses in children's literature and in the teaching of English are offered. When the demand is sufficient, historical English, including Anglo-Saxon, Chaucer, and history of the English language, will be scheduled.

Francis

Splawn

Alexander

May



## Fine Arts

**ART**—Our aim in this department is to see, to know, and to appreciate the beautiful; and we endeavor with pen, crayon and brush, with lines, shadows, and colors, to interpret the beautiful that others may enjoy it with us.

**MUSIC**—This department strives to bring music to all, and all to music. Supervisors of school music are developed and sent out from college; the organizations appear in many towns of this section; and the regular Wednesday morning chapel period given to assembly singing has become a vital period in the student life. Whether or not the student studies music or belongs to one of the organizations, he comes under the broadening and inspiring influence that the subject has.

**DRAMATIC ART**—The purpose of this department is to stimulate thought, to train the observation, to create an atmosphere in which people can work together. We aim to develop the individual through a study of mind, voice, and body. The "Footlight Club," organized this year, aims to develop poise, stage presence, better speech, and an appreciation of the highest drama. The department offers an opportunity for anyone who may desire to express himself and to develop his unused talents.

Top Row—Engle, Hamill, Wood.

Bottom Row—Wheat, Pecaut, McNess.



## Languages

---

"Reading maketh a full man; conference a ready man; and writing an exact man."  
—Bacon.

The Language Department aims and endeavors to attain a high degree of co-ordination with all the other departments of the institution by fostering the powers of accurate observation and rational comparison, by inculcating a finer taste for correct and agreeable speech sound, thus strengthening in the student the analytical, the synthetical, and the artistic, the philosophical, the scientific, and the aesthetic faculties of the mind.

Elementary and advanced courses in French, Latin, and Spanish are offered.



Bila

Hunnicutt

McLeod



## Math-Natural Science

The Geography Department offers fifteen courses fully comprehensive in scope. In some of the courses there is laboratory work, and the geography room contains a large number of models and relief maps made by the students. There are frequent illustrated lectures in the projection room and at suitable times excursions are made to nearby beaches.

The Biology Department offers nine courses in biology. The laboratory facilities though limited are adequate for small sections of twenty-four to thirty students. Effort is made to present information of interest and value to teachers on the biology of this section of Texas, and to develop familiarity with the common plants and animals that are to be found here.

The work offered in the Chemistry Department is comprised in five courses which are planned to lay the foundation for teaching chemistry or for pursuing work in the fields of applied chemistry. Those who purpose to enter medical or dental schools will find courses suited to their needs, and home economics students are provided for in the general organic and biochemistry courses.

The courses in mathematics are such as to supply a thorough basis for the teaching of elementary mathematics, also the necessary foundation for courses in physics, chemistry, biology, and education.

The Physics Department is equipped to offer the standard college courses in this field, covering general physics, heat, light, and electricity.

Top Row—Nierman, Williams, Reed.

Bottom Row—Porter, Allen, Sinclair.





## Physical Education

Our program of physical activity is made to fit the needs of all participants.

For the young men, this need is met on the field through the major sports—football, basketball, baseball and track—and in the gymnasium through tumbling and group games. We endeavor in the competitive sports to so instruct the player that he will be able to go out into the high schools of the State and render acceptable service as a coach. Courses in the theory of coaching the major sports are offered.

For the young women the need is met through individual gymnastics. The program seeks to develop a love for and a skill in motor practices, such as tennis, basketball, volley ball, indoor baseball, archery, and in folk, clog and character, and natural dancing, that they may be continued throughout life. A study is made of the characteristics of the different age periods of children when the various types of physical activity in games and plays would have their greatest appeal and be of the most value in child development. The program also seeks to give some knowledge as to the structure and function of the body mechanics and their care, so as to make health a positive and vital factor in the life of each individual. The general aim of the physical education program is to be physically wholesome, mentally stimulating and socially sound.

Smith

Blythe



## Social Science

The Social Science Department includes history, government, economics and sociology. The courses in the department trace the life history of races and nations, the development and policies of political institutions, and make a study of economics and sociological principles, institutions and problems.

The interest that students find in the courses of this department is shown in the increasing number who register for the courses. The registration in the department is the third largest in the institution.

The department has sponsored the organization and encouraged the growth of the Robert J. Kleberg History Club. This club engages in social, literary and scientific work. It is making a special study of Texas History, and is building up the first units of a museum in the collections that are being made from various sources.

Conner

Dickens

Connell



## Vocational

Fully appreciative of the fact that "progress is the watchword" in all lines of business, it is the purpose of the Department of Agriculture to bring to the students who choose work in this field the very latest developments and discoveries affecting the production, preservation and marketing of all farm products.

The purpose of the Home Economics Department is to further interests and to develop abilities, in order to uphold the high standards of the ideal woman, so that she may become a more able individual and a more efficient citizen.

The Business Administration Department has enjoyed a steady growth since the opening of this school. Students are trained to teach commercial work in the high school as well as to work in the business world. They will find splendid equipment for their use. Of especial significance is the fact that Burroughs' most modern bookkeeping and banking machine has been added to the equipment already on hand. Students may major in business administration for either the B. A. or B. S. degree. The work given includes typewriting, shorthand, bookkeeping, accounting, business law, office management, business English, banking, and the methods course in teaching of business subjects.

Top Row—Manning, Davis.  
Bottom Row—Warren, Neely, Johnson.



## Ex-Students' Association

The purposes of the Ex-Students' Association are: To keep ex-students in touch with each other; to promote the social and professional interests of its members, and to promote the general interest of the South Texas State Teachers College through the dissemination of information.

This is a permanent organization of the college, which holds its meetings annually during the spring commencement. All members who have completed matriculation in the South Texas State Teachers College are eligible for membership.

"By their fruits ye shall know them."

### OFFICERS

J. H. Stamper, Bishop	President
Miss Brucie Butts, Bishop	First Vice-President
Mrs. Ruth Ehlers Simons, Rio Hondo	Second Vice President
Miss Aline Gillett, Beeville	Third Vice President
Vernon Ping, Kingsville	Fourth Vice President
Miss Willie Fosselman, Kingsville	Executive Secretary
Miss Maurine Hvistendahl, Kingsville	Corresponding Secretary
R. E. May, Kingsville	Treasurer

Stamper

Fosselman

Hvistendahl

May



## Student Association

Years ago faculty ruling was in vogue, but progressive students decided to shoulder their own responsibility and govern themselves. The test of time has justified the action of the executive committee in entrusting the welfare of the students to their own hands.

The purpose of the Student Government Association is to increase the co-operation between the students and faculty of the South Texas Teachers College in carrying out an ideal honor system.

### MEMBERS OF COLLEGE COUNCIL

Frank Warner  
Julian Baird  
Ethel Blythe  
Bill Herrington

Willa Woodside  
Norman Bishop  
Albert Pingree  
Maggie McDonald

Warner

Herrington

Blythe

Baird



LIBERAL AND FINE ARTS



C L A S S E S



The 1928 EL RANCHO



SENIORS







WILLA WOODSIDE  
President

MAURINE HVISTENDAHL  
Secretary

---

## Class History

---

On the 28th day of May, 1928, the great contest ended for the Class of '28, and now, that the final whistle has blown and the goal has been won, there may be some who would enjoy reviewing the game, play by play.

On October 1, 1925, the Class of '28, coached by Miss Francis Alexander, and Mr. Amos H. Engle, trotted on to the field under the able leadership of Miss Louise Harrell, class president. Curriculum, with English, Education and the Science twins, Social and Natural, in the backfield kicked off to the class' Freshman line, but Miss Harrell's warriors succeeded in running the ball back to their Sophomore yard line. From this point they forged steadily ahead until the Junior yard line was reached. This progress was made on straight football with term themes, notebooks, oral reports and supplementary reading bucking the line for heavy gains. Several spectacular off-tackle plays, such as chapel programs and entertainments, gave the spectators a few extra thrills. Time was called in this quarter while the Class of '28 presented their Alma Mater with the landscape painting that now hangs in the College Library.

At the close of the half, several of the members were awarded diplomas and certificates for their excellent work in breaking up many of the opponent's strongest plays.

The Class of '28 came back strong in the second half, showing determination to hold their lead. For the rest of the game the Class



## The 1928 EL RANCHO

was under the leadership of Miss Willa Woodside, who was elected president in the Fall of 1926, and again in 1927. Miss Vernita Stewart and Mr. Jeff Smith were added to the coaching staff. Displaying perfect organization and experience, the team got off with a flying start. The 1926-27 quarter of the game was featured by the many responsible positions held by its members. They were well to the front in every play made. Chapel programs and entertainments were also featured in this quarter. On April 19, the Class of '28 was given a rousing ovation from the rooters' section by the Class of '30 in the form of a May Fete. Miss Pearl Harper, one of the popular members of the team, was chosen as Queen of the May.

At the beginning of the last quarter, Miss Woodside was again elected to lead the team into the fray, and Miss Corinne Hamill and Dr. J. L. Nierman were selected to assist Coaches Alexander and Engle. The Class of '28 took the ball on downs on the Senior yard line and began a steady drive for a touchdown. An encouraging send-off was again received from the side-lines when the faculty treated the class to a reception. Miss Woodside then brought the spirit of her team to a still higher level when she got away from her opponents for an 85-yard candy pull around left end. At this stage of the game the support from the side lines was growing stronger and stronger. Coaches Alexander and Engle led the cheering with a Leap Year dinner, and this was followed with the Arbor Day program by the class on Washington's birthday. Miss Woodside next eluded her opponents with a steak fry on Chandler's farm.

On the evening of May 14, Dr. and Mrs. Cousins led the cheering with a delightful reception at their home, for the class. This was followed by another rousing reception for the class at the home of Dr. and Mrs. J. L. Nierman on the evening of May 18.

With the ball on their opponents' 10-yard line, the Class of '28 made another spectacular play on the evening of May 25, with the presentation in the auditorium of the three-act play, "The Goose Hangs High." This put the ball on the opponents' 1-yard line, and on May 28 the Class of '28 went across for a touchdown. With only three more month of play, the first string team retired and left the second string to kick goal for the extra point next August.



The 1928 EL RANCHO



**LETHA AGNEW**  
Corpus Christi

Chemistry.  
Kleberg County Club 1925-'26.  
Choral Club 1926-'27.  
Classical Club 1926-'27; 1927-'28.  
Valley Club 1926-'27; 1927-'28.  
English Club 1927-'28.  
Reporter English Club 1927-'28.  
Y. W. C. A.  
Associate Editor of South Texan  
1926-'27.  
Editor-in-Chief, South Texan 1927-'28.  
Managing Editor, South Texan 1928.



**ESTHER F. ALLISON**  
Kingsville

Home Economics.  
Scholarship Society.  
President of Kappa Omicron Phi 1928.



# The 1928 EL RANCHO



**FLORENCE ARNETT**  
Mercedes

Business Administration.  
History Club 1925-'27.  
Girls' Glee Club 1925-'27.  
Y. W. C. A.  
Classical Club 1928.  
Valley Club 1925-'27.  
B. S. U. 1925-'28.

**TREBA BAKER**  
Kingsville

English.  
English Club 1926-'27; 1927-'28.  
Classical Club, Vice President 1927-'28.  
Y. W. C. A.



The 1928 EL RANCHO



**HORACE BENNETT**  
Weslaco

History.  
Men's Glee Club 1927-'28.  
History Club 1925-'26; 1927-'28.  
Football 1925.

**EDITH BOYD**  
Kingsville

Mathematics.  
English Club, Secretary 1926-'27; Vice  
President 1927-'28.  
History Club.  
Dramatic Club 1927-'28.  
Classical Club.  
Y. W. C. A.  
Basketball, Captain 1927-'28.  
Chang Foo Choo 1926-'27.



The 1928 EL RANCHO



MAY R. CHANEY  
Kingsville

Latin.  
Scholarship, Vice President 1926-'27.  
Classical Club 1925-'26; President  
1926-'27; 1927-'28.  
Student Assistant in Latin Department.

NINA FAULK DURHAM  
Driscoll

History.  
History Club 1926-'27; 1927-'28.  
Scholarship Society, President 1927-'28



The 1928 EL RANCHO



**WILLIE FOSSELMAN**  
Kingsville

English Club 1925-'26; 1926-'27;  
1927-'28.  
History.  
History Club, Secretary 1925-'26;  
1926-'27; 1927-'28.  
Spanish Club, Reporter 1925-'26.  
Kleberg County Club 1925-'26.  
Ex-Students' Association, Executive  
Secretary 1927-'28.  
Y. W. C. A.  
Scholarship Society.  
South Texan Reporter 1927-'28.  
Student Assistant Librarian 1926-'27;  
1927-'28.

**WILLIAM GRAHAM**  
Kingsville

English.  
Men's Glee Club 1926-'27; 1927-'28.  
Orchestra 1925-'26; 1926-'27; Business  
Manager 1927-'28.  
Basketball 1925-'26.  
Track 1926.



# The 1928 EL RANCHO

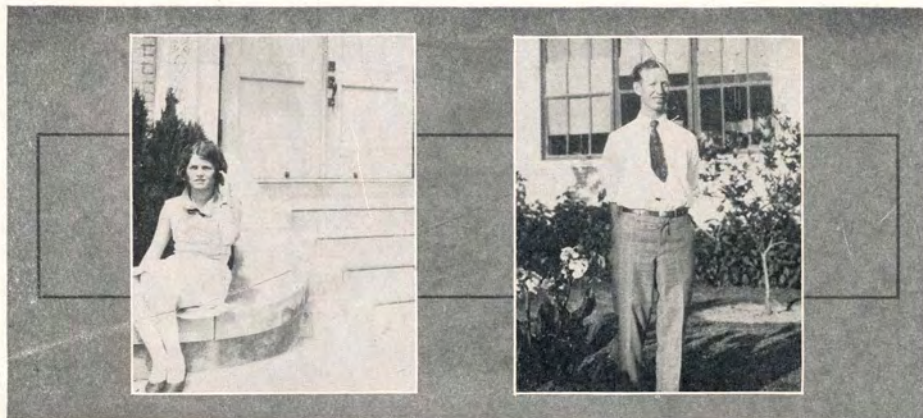


**VELMA HARGROVE**  
Kingsville

English.  
English Club, Secretary 1927-'28.  
El Rancho Staff, Organization Editor  
1927-'28.  
Y. W. C. A.  
Scholarship Society.  
Senior Class, Treasurer.  
Press Club.  
May Queen, 1928.

**JEWEL HARRY**  
Yoakum

History.  
History Club 1927-'28.  
Javelina Club 1927-'28.  
Scholarship Society.  
Football 1925; 1927.  
Basketball 1925.  
Baseball 1925.  
South Texan, Associate Editor 1925.





# The 1928 EL RANCHO

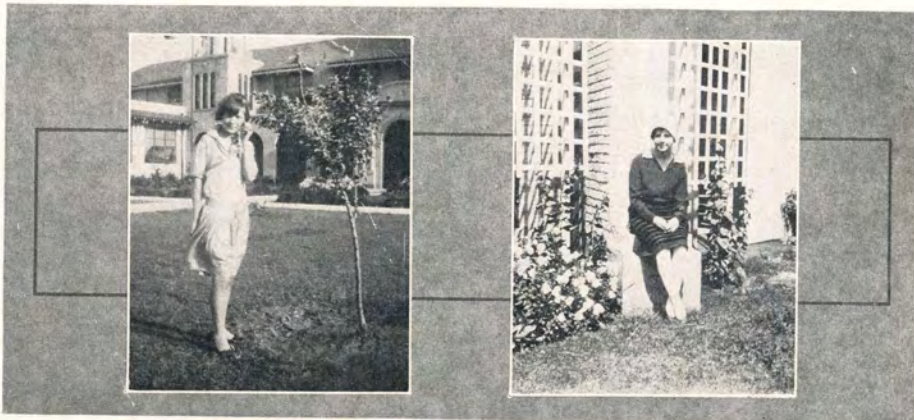


**CLOVIS HICKMAN**  
Kingsville

Spanish.  
Kleberg County Club 1925-'26; 1926-'27.  
History Club 1925-'26; 1926-'27.  
English Club, Secretary 1926; Treasurer 1927-'28.  
Treble Clef Club.  
Girls' Quartette.  
Spanish Club 1925-'26.  
Chang Foo Choo 1925-'26.  
South Texan, Associate Editor 1927-'28.  
Scholarship Society.  
Y. W. C. A. Cabinet.  
Classical Club 1925-'26.  
Press Club.

**MARTINE HOLBROOK**  
Falfurrias

Primary Education.  
Dramatic Club 1927-'28.  
Y. W. C. A. Cabinet.



The 1928 EL RANCHO



**MAURINE HVISTENDAHL**  
Kingsville

English.  
South Texan Staff 1926-'27.  
English Club 1926-'27; 1927-'28.  
Girls Glee Club 1926-'27; 1927-'28.  
Treble Clef, Reader 1926-'27.  
Girls' Glee Club, Reader 1927-'28.  
Scholarship Society.  
Y. W. C. A., Cabinet.  
Alpha Sigma.  
Editor-in-Chief of El Rancho 1928.  
Ex-Students' Association, Corresponding Secretary.  
"All Round Girl" 1928.  
Senior Class Secretary.  
Press Club.



**JOHN HUGH KNIGHT**  
Odom

History.  
History Club 1927-'28.  
Glee Club 1927-'28.



The 1928 EL RANCHO



W. H. LeCOMPTE  
Kingsville

English.  
President English Club 1925-'26.  
Press Club.  
Scholarship Society.  
Editor-in-Chief, The South Texan  
1925-'27.  
President Student Council 1926-'27.  
Business Manager, The South Texan  
1928.



JULIA A. MULLEN  
Kingsville

English.  
Teacher in Kingsville 1927-'28.  
Teacher of S. T. S. T. C. Training  
School 1927.



The 1928 EL RANCHO



**ELIZABETH PIPKIN**  
Kingsville

English.  
English Club 1925-'26; 1926-'27;  
1927-'28.  
Spanish Club, Secretary 1926-'27.  
Kleberg County Club, 1925-'26.  
Yell Leader of Pep Club 1926-'27.  
Y. W. C. A.  
Choral Club 1925-'26.



**VELMA POWER**  
Edna

Home Economics.  
Kappa Omicron Phi, Treasurer 1927-'28.  
Scholarship Society.



The 1928 EL RANCHO



**ANN PRICE**  
Kingsville

Music.  
Scholarship Society.  
Girls' Glee Club.  
Treble Clef.

**DANA D. PRINCE**  
Coolidge

History.  
Football 1927.  
Basketball 1927-'28.  
Baseball 1928.  
El Rancho, Associate Editor 1928.  
"Popular Boy" 1928.



# The 1928 EL RANCHO



**DAVID C. ROBERTS**  
Kingsville

History.  
English Club 1925-'26; President  
1926-'27.  
Javelina Club 1926-'27; Parliamanta-  
rian 1927-'28.  
Glee Club 1926-'27; Business Manager  
1927-'28.  
Men's Quartette 1927-'28.  
South Texan, Business Manager  
1925-'26.  
History Club 1927-'28.  
Vice-President of Junior Class 1926-'27.

**MARIE ROTH**  
McAllen

Music.  
Orchestra 1926-'27; 1927-'28.  
Treble Clef.  
Girls' Glee Club 1928.  
String Quartette.  
Scholarship Society.  
Girls' Quartette.  
Y. W. C. A.



The 1928 EL RANCHO



GLADYS SEDWICK  
Kingsville

Business Administration.  
Kleberg County Club, President  
1925-'26.  
Chang Foo Choo 1925-'26.  
Girls' Glee Club 1925-'26; 1927-'28.  
Secretary, Y. W. C. A. 1927-'28.  
Scholarship Society, Secretary 1927-'28.  
Student Assistant to Registrar.



LUCILLE SERIGHT  
Galveston

Music.  
English Club 1928.  
Girls' Glee Club 1928.  
Y. W. C. A. Cabinet.  
Girls' Quartette 1928.



# The 1928 EL RANCHO



**JOHN H. STAMPER**  
Alice

Ex-Students' Association, President  
1927-'28.

Teacher in Bishop, Texas, 1926-'27-'28.



**FRANK WARNER**  
Kingsville

English.  
Football, Captain 1926-'27.  
Baseball, Captain 1927.  
Student Association, President 1927-'28  
Senior Class Vice-President.  
"Best Athlete" 1927.  
"All Round Boy" 1928.  
Javelina Club 1926-'27; 1927-'28.  
El Rancho Business Manager.





# The 1928 EL RANCHO



**WILLA WOODSIDE**  
Rio, Hondo

English.  
Treble Clef Club, Business Manager  
1925-'26.  
Valley Club 1925-'26; 1926-'27; 1927-'28  
English Club, President 1927-'28.  
History Club, Secretary 1927-'28.  
Y. W. C. A. Cabinet.  
President of Junior Class 1926-'27.  
President of Senior Class 1927-'28.  
Girls' Quartette.  
Scholarship Society.  
"Junior Favorite" 1926-'27.  
"Duchess of May Fete" 1926-'27.  
Student Assistant Librarian 1927-'28.

**NINON YEAGER**  
Wichita Falls

English.  
Dramatic Club 1927-'28.  
History Club 1927.  
English Club 1927-'28.  
Scholarship Society.



The 1928 EL RANCHO



JUNIORS



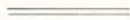


**NORMAN BISHOP**  
President

**HENRIOLA GREGG**  
Secretary



## Junior Class History



“As Freshmen first we came to school,” but “exams and tests and hazing rules” held no terror for the first Freshmen class of S. T. S. T. C. in 1925-'26! One hundred and ten strong, we virtually ruled the College in its infancy, with Aubrey Westlake as our president. The Fish weren't dependent upon the upper classmen for entertainment, but enjoyed a banquet given by the Freshhmen, for the Freshmen—the social event of the year. As the first Freshmen class, we opened the passage of intellectual endeavor to the future Frehmen classes of S. T. S. T. C.

As “Gay young Sophomores,” we naturally felt and manifested our superiority, now under the leadership of Nadine Brown. Our lesson to the Freshmen was obvious enough in our hospitable water melon party, when the Freshmen went home with clean, shining faces and new resolves.

As “Jolly Juniors” we have quietly taken our place among those who are most eager for knowledge. During the current year, when we have



## The 1928 EL RANCHO

really begun to be quite old, we have realized the importance of our position as one of the upper classes of the institution. Just what have we accomplished, this small band of Juniors? We have not been in the limelight of things, surely. Yet, when it comes to the matter of falling in line for real class spirit, we are right on hand. Remember our ideal family exhibited in chapel one morning? Well, that's the kind of a class we are, all one big family group under the able leadership of Norman Bishop.

"In Senior Year we act our part"—and how soon that is to be for us! Just next year we will be enjoying our last days together in dear old S. T. C. We realize that future history can be judged only by the past. With this in mind, we predict in good faith that some day our aspirations shall materialize and become realities; our purposes shall become our accomplishments; and our goal, which is now distinctly in view, shall be attained.



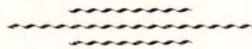
The 1928 EL RANCHO



Norman Bishop  
Rio Hondo

Omega Boswell  
Bishop

Lura Lee Boggan  
Kingsville



Alpha Boswell  
Bishop

Nell Boyd  
Corpus Christi

Verner Crofford  
Kingsville



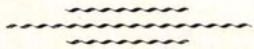
The 1928 EL RANCHO



Ena Fair  
Kingsville

Esther Foley  
San Benito

Porter Garner  
Kingsville



Henriola Gregg  
Kingsville

Simon Gomez  
Kingsville

Ruby Alta Harrell  
Bishop



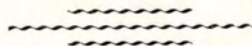
The 1928 EL RANCHO



Wilma McAferty  
Kingsville

Owen McKinney  
Bishop

Betty Van Nordstrand  
San Juan



Mildred Nuckols  
Kingsville

Merle Wainner  
Bay City

Herbert Willenberg  
Rio Hondo

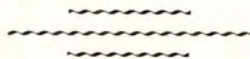


The 1928 EL RANCHO



Helen McLean  
Corpus Christi

Erma Wines  
Kingsville



Beryl Barber  
Kingsville

Jack Partain  
Kingsville





## South Texas Teachers College

---

In the grand old State of Texas,  
In the Southland, warm and fair,  
Where all is bright and sunny,  
And the breezes fan the air:  
There is our Alma Mater—  
The College we adore,  
Where we make good friends and love them  
As we ne'er loved friends before.

Chorus—

South Texas Teachers College,  
Your name we ever shall revere.  
For we love your campus verdant,  
And your halls so full of cheer.  
We love your stately palm trees,  
And your cloister filled with glee,  
And there's none so dear,  
Tho' far or near,  
As our own S. T. C.

In the forum where we gather  
For the songs we love to sing,  
Our voices rise up to the skies,  
And we make the welkin ring.  
We sing of love and duty,  
Of dreams of marble halls;  
We repeat the chorus softly,  
And the echo gently falls.





## SOPHOMORES

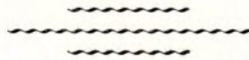


The 1928 EL RANCHO



JACK MECKLIN  
President

JUANITA ALLISON  
Secretary



Reynaldo Adame

Juanita Allison

Rachel Bluntzer

Daisy Boggan



The 1928 EL RANCHO

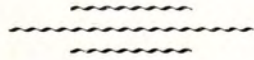


Florence Burgess

Beth Cameron

Dorothy Carter

Annie Caton



Consuelo Cavazos

Johnnie Mae Decker

Margaret Doane

Toria Duncan



The 1928 EL RANCHO

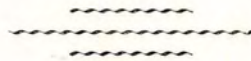


Lucille Fry

Willie M. Greaves

Lenora Hays

William Herrington



Marie Holmes

Thelma Lindholm

Marie Magnuson

Marjorie Martin



The 1928 EL RANCHO

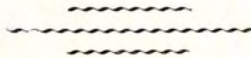


Vannie Belle Mattiza

Thos. Gaines Newton

Bert Patterson

Bernice Petterson

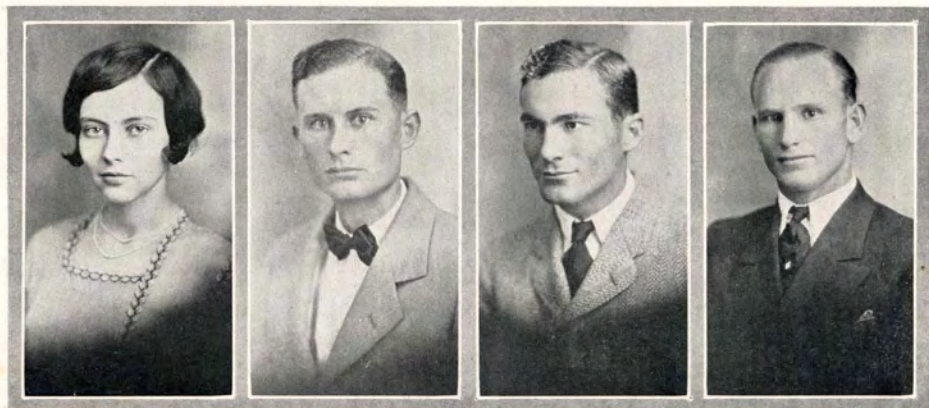


Margaret Phillips

Elwyn Powell

Roy Shelton

Jesse Smith



The 1928 EL RANCHO

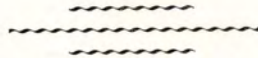


Weldon Smith

Laurie Thompson

Lorraine Watson

Loris Welhausen



Esther Bickford

Ernest Cannon

Antoinette De Mauri

Marion Beaver



The 1928 EL RANCHO

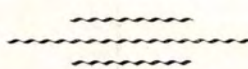


Esther Weller

Lorena White

Lucile Whitson

Betty Williams



Albert Pingree

Karine Shults

Eva Ellen Miller

May Christine DuBois





The 1928 EL RANCHO

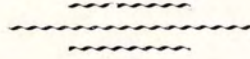


Jack Mecklin

Pauline Blair

Raymond Fitch

Roy Ferguson



Cecil Buck

Opal Robbins

Paul Filla

Ida Hall





FRESHMEN

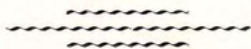


The 1928 EL RANCHO



EDDIE RUTLEDGE  
President

ONIE HUTSELL  
Secretary



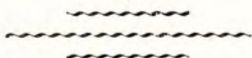
Top Row—Alyne Ashmore, Lawrence Ayers, Julian Baird, Audrey Barber, Inez Barkley.  
Bottom Row—Ruby Beckley, Marie Bedford, Mrs. J. W. Berry, Melba Berry, Ethel Blythe.



# The 1928 EL RANCHO



Top Row—Allena Collins, Ned Boggan, Inez Boyle, Edward Brown, Eva Brown. ....  
 Bottom Row—James Burney, Eugene Carradine, Gene Cage, Maxine Cannon, Katie Marie Cardwell.



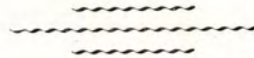
Top Row—Ruth Collins, Lucille Buck, Jeanne Dunham, Martha Duncan, Luther Crofford.  
 Bottom Row—Lorella Dobbins, Mildren Dodillet, Cyril Dreyer, Reno Drury, Avis Dowis.



# The 1928 EL RANCHO



Top Row—Esther Farquhar, Myrtle Ruth Godwin, Paul Forgy, Euna Gardner, Louis Gregg.  
 Bottom Row—Bernice Guthrie, Maurine Guthrie, Clemmie Mae Hancock, Pauline Har-  
 grove, Cecil Hart.



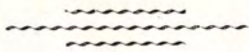
Top Row—Mozelle Hatter, Ruby Henrichson, Vivian Herron, Alma Herrington, Betsy  
 Hoblit.  
 Bottom Row—Margaret Howard, Floyd Hudspeth, Zelpha Hunt, Yendys Hunter, Melva  
 Imken.



The 1928 EL RANCHO



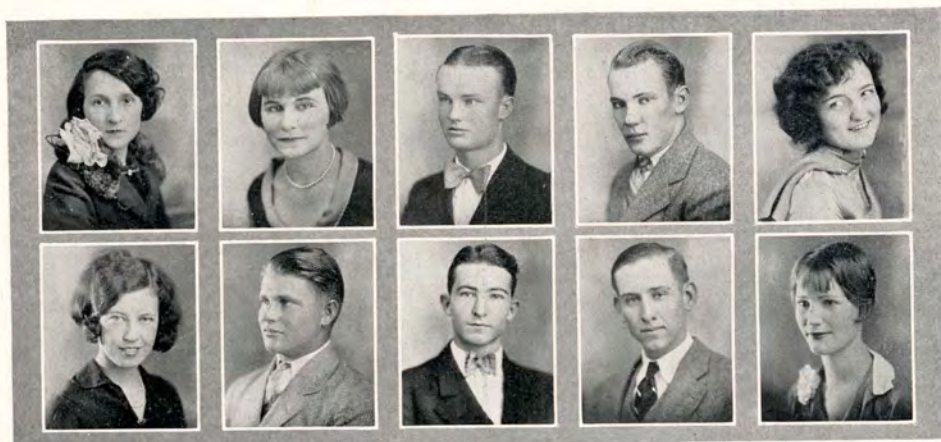
Top Row—Dewey Joiner, Florine Jones, Harry B. King, Mrs. E. Laird, Margaret Laursen.  
 Bottom Row—Warren Ralph Lilly, Christine Lynn, Roberta McBryde, Maggie McDonald,  
 Charlotte McEowen.



Top Row—Robert McEowen, Verna McMasters, Ethel McKenney, Lauro Montalvo,  
 Claude Mynier.  
 Bottom Row—Ollie Newton, John Porter, Francis Powers, Rebie Robbins, Lottie Rhoden.

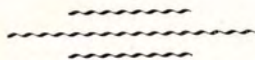


# The 1928 EL RANCHO



Top Row—Matilline Rogers, Bessie Rohan, Morris Roper, Eddie Rutledge, Margaret Shumate.

Bottom Row—Polly Sims, Henry Smith, Victor Smith, Joe Spurlock, Beatrice Stewart.



Top Row—Donnie Stone, Alta Vickers, James Weisman, Alta Whitten, Anna Lee Whittington.

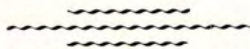
Bottom Row—Grace Wilson, Lorena Yates, Noma Woods, Lillian Haertig, Ruby Young.



The 1928 EL RANCHO



Raymond Manning Clara Sturm Louie Weiss



Ola Cooper Onie Hutsell Ruthelle Robbins





The 1928 EL RANCHO



The Forum





SPECIAL STUDENTS



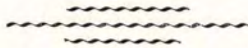
The 1928 EL RANCHO



Mary Arthur  
Kingsville

Bernice Hunter  
Kingsville

Vila B. Hunt  
Robstown



Adelina Garcia  
Corpus Christi

Edith Wilson  
Nacogdoches

Mrs. Vivian Noakes  
Calallen

Cecil Larsen  
Kingsville



The 1928 EL RANCHO



SUB-COLLEGE



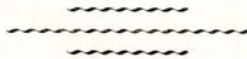
The 1928 EL RANCHO



Emma Taplin  
Agua Dulce

Georgie Konze  
Woodsboro

Della Mae Brown  
San Patricio



Ila Lee Roberson  
Mineral

Pauline Elliot  
San Benito

Juanita Trant  
Ricardo



IN MEMORIAM

---

In loving remembrance  
of  
those students  
who were taken from us  
by death:

GERTRUDE GLAZENER

NETTIE HASS

MRS. GEORGIA HOLLIFIELD





E N G I N E E R I N G



C O L L E G E Y E A R

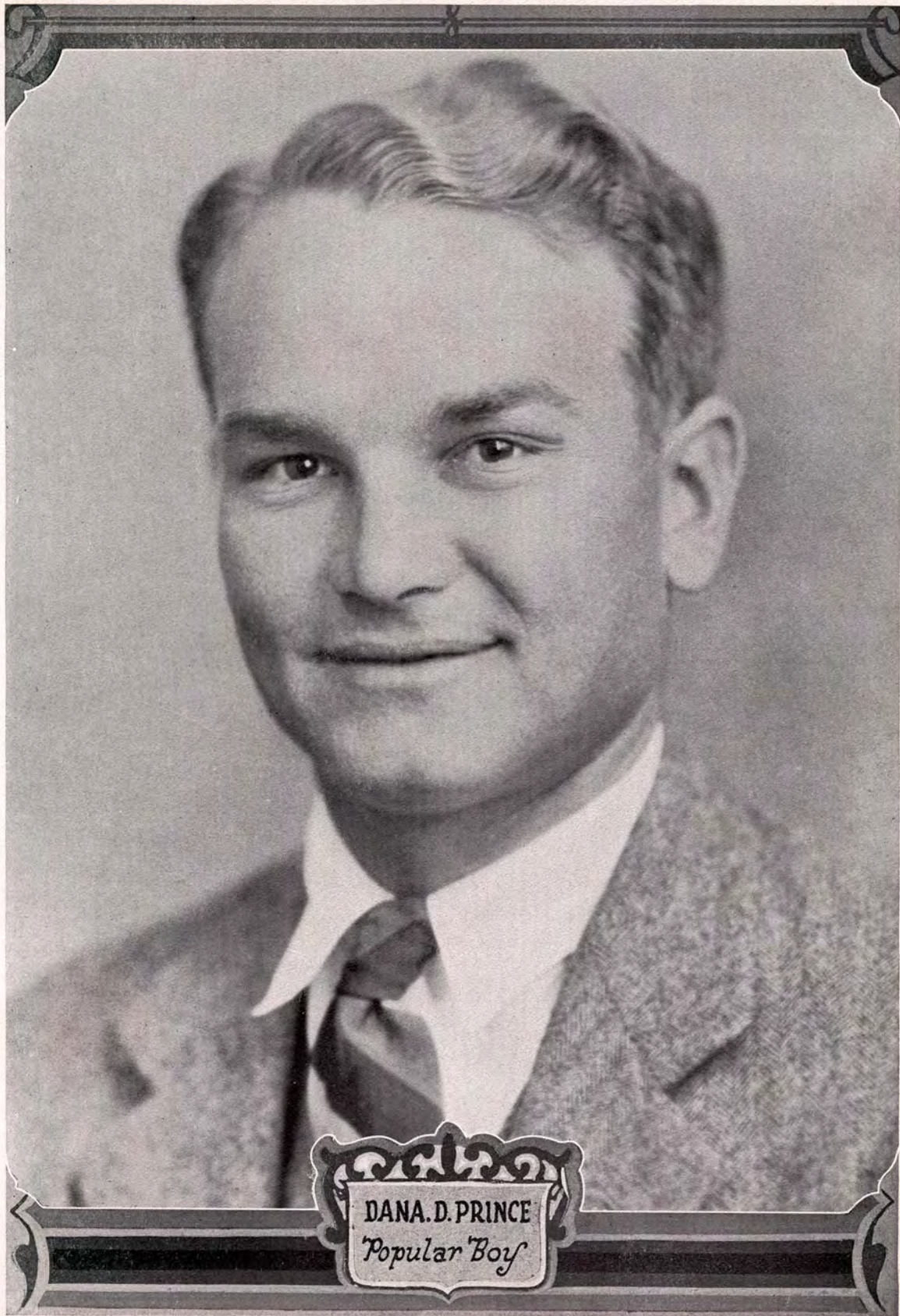








INEZ BARKLEY  
*College Beauty*



DANA D. PRINCE

*Popular Boy*



JUANITA ALLISON

*Popular Girl*



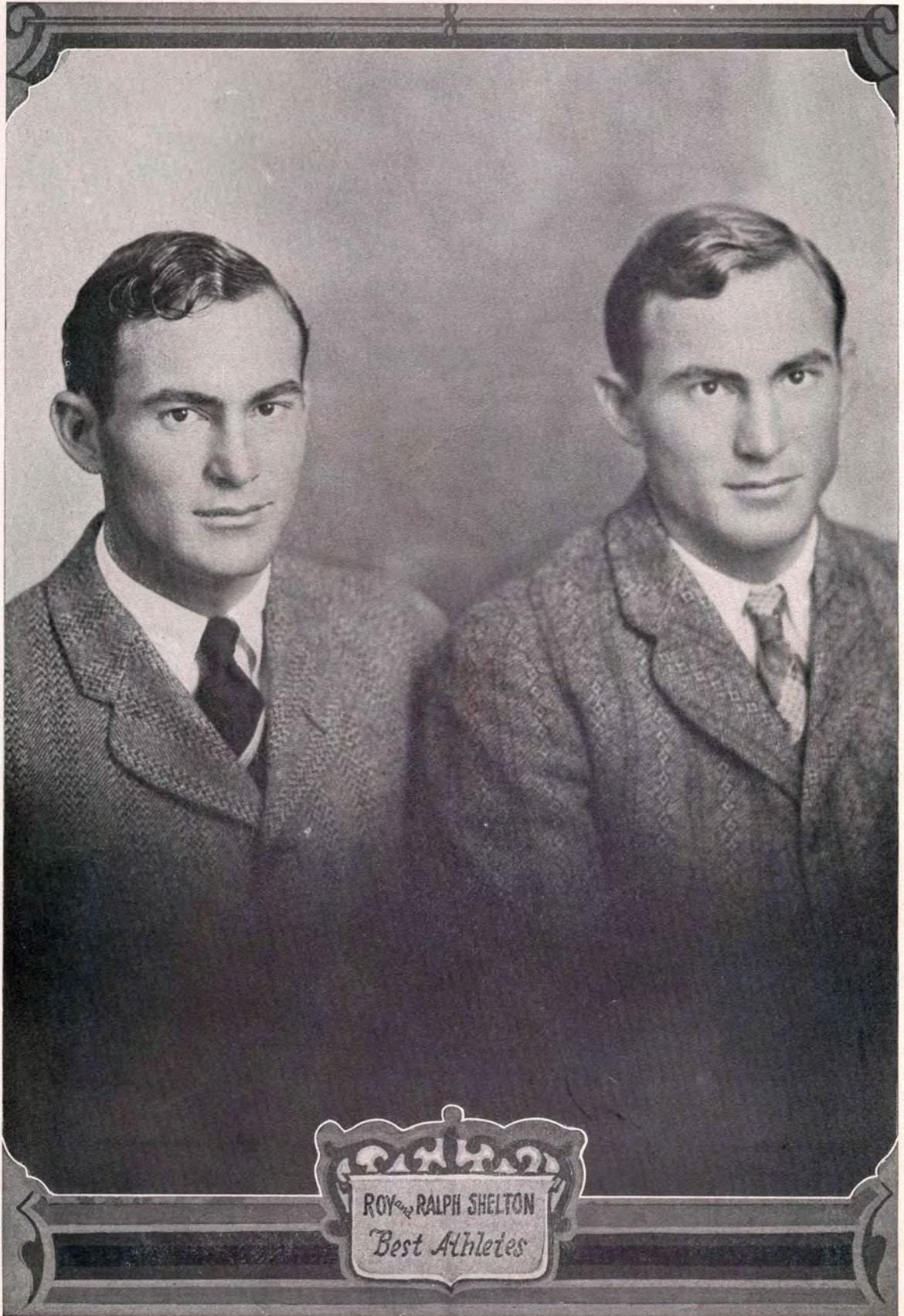
FRANK WARNER

*All-Around Boy*



MAURINE HVISTENDAHL

*All-Around Girl*



ROY and RALPH SHELTON  
*Best Athletes*

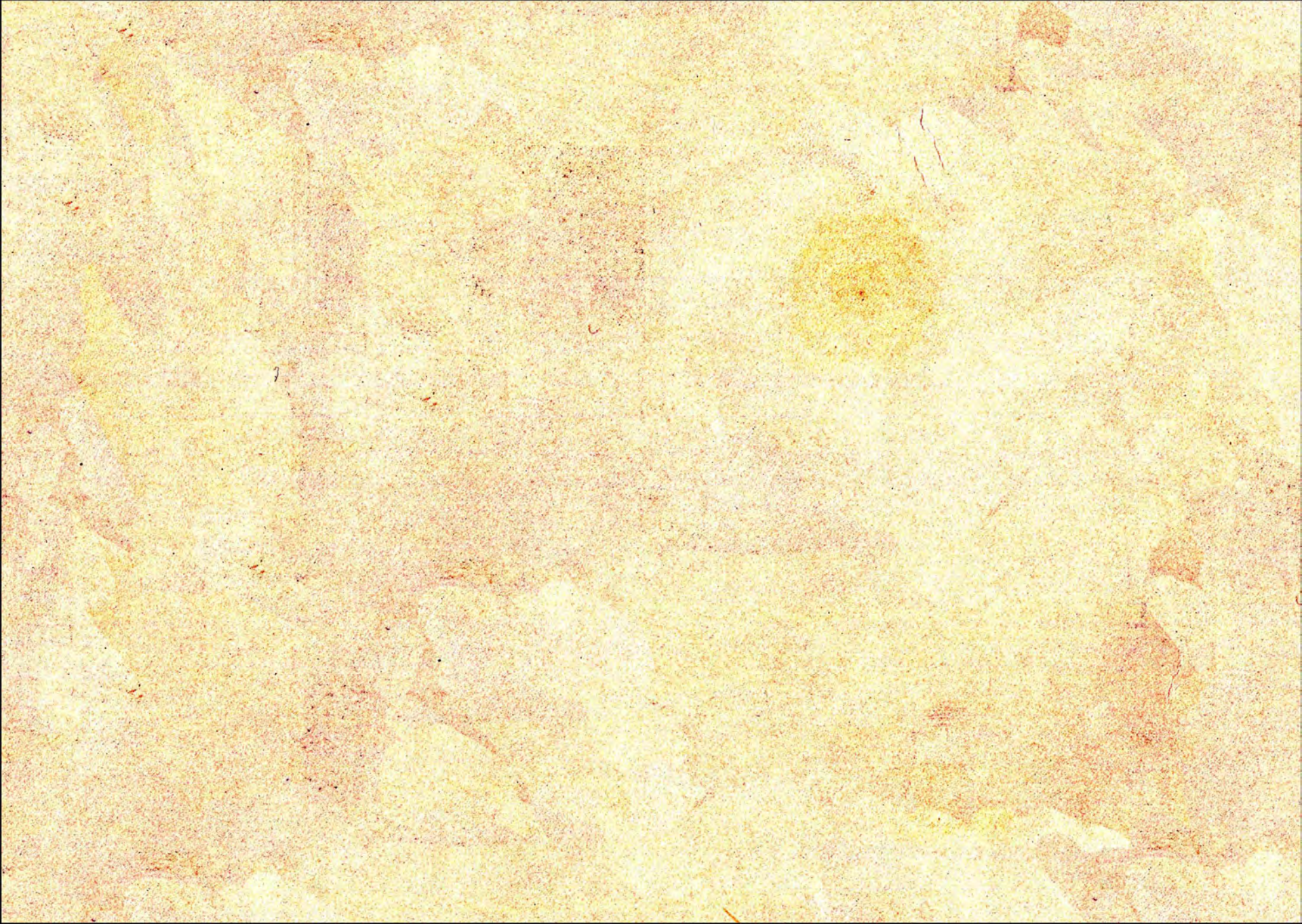




JURISPRUDENCE



FEATURES OF THE YEAR





## ACTIVITIES



## Robert Bartow Cousins Scholarship Society

The Robert Bartow Cousins Scholarship Society aims to promote scholarship. It seeks to broaden its members with a knowledge of all that is ethical and cultural. The ranking tenth of the students in the Junior and Senior classes are eligible for membership in this society.

### OFFICERS

Mrs. Nina Faulk Durham	President
Erma Wines	Vice President
Gladys Sedwick	Secretary
Marie Rooth	Treasurer

### PERMANENT MEMBERS

Mrs. Eugenia Baird Crossley, W. H. Korges

Top Row—Durham, Wines, Sedwick, Yeager, Rooth.

Middle Row—Woodside, Power, Fossleman, Hickman, Partain, Agnew.

Bottom Row—Hvistendahl, Allison, LeCompte, Chaney, Hargrove.



## Orchestra

The Orchestra is one of the College's strong musical organizations; the complete personnel numbers eighteen players, and the instrumentation is unusually good for a group of that size. In addition to making a number of chapel appearances throughout the year, the Orchestra played a Spring Concert, and made contributions to the High School commencement programs in several towns near Kingsville.

The personnel of the Orchestra is (left to right): First Violins—Paul Forgy, Eva Ellen Miller (Piano), Marjorie Martin, Corinne Hamill, Mrs. W. O. Krampitz; Flute—Justus Garner; Cello—Mrs. Clyde Reed; Clarinet—Herbert Willenberg; Viola—Marie Rooth; Saxophones—Robert McEowen, Jack Partain; Second Violins—Charlotte McEowen, Margaret House; Marian E. Wood, Director; Cornet—Albert Pingree; Trombone—William Graham. Members of the Orchestra not in the picture are: Mrs. L. A. Fritts, First Violin; Edith Cousins and Isabel Bauerfeind, Second Violins.



## Girls' Glee Club

This organization is made up of a number of voices that are picked after a series of competitive tryouts, for which all the girls of the College are eligible. A study is made of many standard part-songs for women's voices, and numerous chapel appearances are made by the club. After giving concerts in some of the towns near Kingsville, the club makes its annual tour, and the trip this year included Sinton, Goliad, Cuero, Victoria and Yoakum.

### PERSONNEL OF THE CLUB

First Sopranos—Ann Price, Willa Woodside, Maurine Hvistendahl, Margaret Shumate, Alyne Ashmore; Second Sopranos—Marie Rooth, Myrtle Ruth Godwin, Gladys Sedwick, Lenora Hayes, Clovis Hickman; Altos—Lucille Seright, Wilma McAferty, Marjorie Martin, Violet Loe; Director—Corinne Hamill; Accompanist—Eva Ellen Miller.

Top Row—Woodside, Loe, Hvistendahl, McAferty, Seright, Godwin, Ashmore, Sedwick, Martin.

Bottom Row—Miller, Price, Shumate, Hamill, Rooth, Hayes, Hickman.



## String Quartette

The String Quartette is the newest of the S. T. S. T. C.'s musical organizations, and the College is very proud of the group and the name it has made. The Quartette played several chapel programs, appeared on the regular program of the Music Department of the Women's Club, and played for other civic organizations; the reception of the Quartette at its first chapel program showed that music for the String Quartette is not necessarily "high brow," the students giving the closest attention and spontaneous applause. The College is, indeed, proud that it can boast of such an organization, and does not have to import exponents of that high form or type of instrumental music—Chamber Music.

The personnel of the Quartette is: Miss Corinne Hamill, First Violin; Mr. Paul Forgy, Second Violin; Miss Marie Rooth, Viola; Mrs. Clyde Reed, Violoncello.





## Men's Glee Club

Organized only last year, the club has developed rapidly, and it is already known in South Texas as a Male Chorus of merit; it has done much to advertise the College.

In addition to making appearances in towns in the immediate vicinity of Kingsville, the Club sang a formal home concert, and made a trip to the Valley, where ten concerts were sung. One of these was a broadcasted program from Station KWWG at Brownsville.

The Club is held to a standard of good music, and the Club's audiences have shown their preference for such, rather than that of the lighter type. Miss Hamill accompanied the Club as violin soloist on the Valley trip.

### ORGANIZATION

Amos H. Engle .....	Director
Marie Rooth .....	Accompanist
David Roberts .....	Manager
Jack Partain .....	Properties

Top Row—McEowen, Roy Ferguson, Forgy, Partain, Knight, Beaver, Homer Ferguson.

Middle Row—Reyna, Crofford, Robertson, Colston, Bennett, Patterson, Robert Ferguson.

Bottom Row—Roberts, Powell, Garner, Engle, Rooth, Willenberg, Graham, Newton.

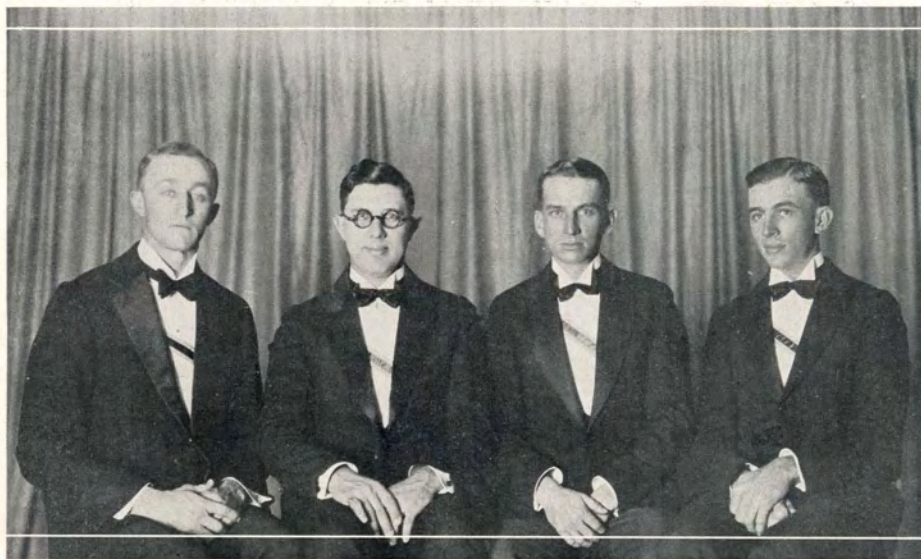


## Male Quartette

This Quartette has established a reputation that places it second to none in South Texas; its contribution to the programs of the Glee Club has been a feature of that organization's work. The Quartette appeared before various civic organizations and in different churches, and gave a complete program in several towns.

### PERSONNEL

Amos H. Engle .....	First Tenor
David Roberts .....	Second Tenor
Homer Ferguson .....	Baritone
Robert Ferguson .....	Bass



## Colonial Party

George and Martha Washington again reigned in state on the evening of February 22, at the College dance that was given in the College gym.

The large hall was beautifully and appropriately decorated in the patriotic colors of red, white and blue, festoons of them being hung from the rafters of the building. Facing the main entrance was a large American flag.

The guests were met at the door by the host and hostess, George and Martha Washington, who were represented by Dr. R. B. Cousins and his wife. The evening was spent in square dancing of various kinds, and everyone participated with true Colonial spirit.



## Senior Tree Planting

On Washington's Birthday, February 22, the Senior Class of the College held its regular annual Arbor Day program. Mr. Warren, head of the Agricultural Department of the College, had provided and made ready the tree, a Rio Grande Ash, which the class was to plant. The tree was assigned to its new home with very appropriate ceremonies. Each member of the class placed around its roots a shovel full of soil, at the same time making some appropriate wish for the College and its students. The entire program for the occasion was as follows:

Song—There's Music in the Air ..... Senior Quartette  
Invocation ..... Rev. Garner  
Poem—The Planting of the Tree ..... Edith Boyd  
Address ..... President Cousins  
Trees (Joyce Kilmer) ..... Maurine Hvistendahl  
The Ceremony of the Planting of the Tree ..... Senior Class  
Senior Class Song ..... Members of Senior Class



## A Bunch of Fun

Christina .....	Wilma McAferty
Raymond Hunting .....	Ray Damron
Cecily Moorland .....	Alyne Ashmore
Tacks Mulford .....	Warren Ralph Lilly
Vera Matherson .....	Margaret Shumate
Alice Hunting .....	Bertie Weatherford
Mrs. Selina Blair .....	Edith Boyd
Murry Kent .....	William Herrington
Nina Lee .....	Florine Jones
Martha .....	Martine Holbrook
Ben Grandon, D. D. ....	Jack Partain
Mary .....	Lenora Hays
Lynn Lockwood .....	Raymond Manning
Sylvia Stewart .....	Ethel Blythe

A bunch of college young people are guests in the village of Heatherdale, and they, with the aid of Christine, the Swedish servant maid, and Mrs. Selina Blair, the village gossip, succeed in making things lively for the villagers.

Left to Right—McAferty, Damron, Ashmore, Lilly, Shumate, Weatherford, Boyd, Jones Herrington, Partain, Holbrook, Hayes, Manning, Blythe.





## ORGANIZATIONS



## Footlight Club

The Footlight Club, the first strictly dramatic organization of the College, aims to give an appreciation of dramatic literature as well as an understanding of the art of acting. Though still in its infancy, unusual interest has been manifested, as shown by the number who applied for membership and the large audiences that attended the several performances of the Club.

We feel that the year's work of the Footlight Club has been most satisfactory. Aside from the regular weekly Monday afternoon meetings where a number of profitable programs have been presented, the Club has been active in promoting various activities of dramatic interest, notably the one-act play contest for the high schools of South Texas. Our latest move is a drive for better stage equipment toward which most of the profits from our play productions will go.

That our organization has been working very effectively, we offer the dramatic productions throughout the year as proof. The first term

Top Row—Partain, Willenberg, Hays, Lilly.

Bottom Row—Yeager, Shumate, Bishop, Holbrook, Jones.



we presented two one-act plays, "Thursday Evening" and "Neighbors." The second term's production was a three-act play, "A Bunch of Fun," and, last, "Icebound," in the Spring term, representing the best of our efforts.

Of course we have played some, too, as made evident by our several social affairs. The wienie roast, Christmas tree, and International Cafe supper are among the happiest memories of the year.

OFFICERS

Jack Partain .....	President
Herbert Willenberg .....	Vice President
Lenora Hays .....	Secretary
Warren Ralph Lilly .....	Treasurer
Mildred Pecaut .....	Faculty Sponsor



Top Row—McDonald, Blythe, Herrington, Boyd, Ashmore.

Bottom Row—McAferty, Manning, Carter, King, Larsen.





# Robert J. Kleberg History Club

Organized June 22, 1925

Club Day, April 21

Club Flower, Blue Bonnet

## SPONSORS

Mrs. May H. Dickens

Mr. J. E. Conner

## HONORARY MEMBERS

Dr. and Mrs. R. B. Cousins

Mr. and Mrs. R. J. Kleberg

Mr. T. A. Simons, Jr.

Mr. John B. Dunn

Mr. J. E. Gregg

Mr. George C. Martin

Rev. H. B. Horton

The History Club, the oldest in the College, has for its aim the study and development of legends and traditions of Texas History, and the collection of material for a museum related to the history of South Texas. During the year 1927-28, a study has been made of outstanding Texans and their contributions, beginning with the early explorations and settlements.

There have been many historic relics donated to the Club this year, among which are a cannon ball that destroyed the lighthouse at Corpus Christi in 1862; guns picked up on the battlefield at Goliad; a sword used in the War of 1812; money which was picked up in the old mission of La

Top Row—Wainner, Garner, Henrichson, Fair, Roberts.

Bottom Row—Conner, Dickens, Herrington, Woodside, Bishop.



# The 1928 EL RANCHO

Bahia at Goliad; a snuff box used by the grandmother of Dr. Cousins; and a collection of forty-one European coins dating from 1686, which were loaned to the Club by Mrs. H. V. Larsen.

May 8, 1927, the club made a pilgrimage to the Mission La Bahia at Goliad. Mayor Joseph Wearden, who received the Club, said no organization for the study of history had heretofore made such a visit to this Texas shrine. The visit was made on Mothers' Day, and the program which was rendered was in keeping with the day; but ranged itself around the memories of Fannin and his men. Mrs. Dickens pointed out the fact that the sentiments of Lincoln's Gettysburg address might with all propriety have been delivered on this spot. Dr. R. B. Cousins offered a prayer that was full of sentiment and meaning, and the ceremony was closed with the placing of flowers upon the spot where Fannin fell. Goliad—"Remember Goliad," means immensely more to those who took part in this ceremony than it ever could have meant before.

## OFFICERS

Merle Wainner .....	President
Porter Garner .....	First Vice President and Reporter
Ruby Henrichson .....	Second Vice President
Willa Woodside .....	Secretary
Ena Fair .....	Treasurer
Mrs. Thelma Lindholm .....	Corresponding Secretary
David Roberts .....	Parliamentarian and Critic

Top Row—Durham, Buck, Collins, Knight, Lindholm, Bennett.

Bottom Row—Powers, Gardner, Cannon, Greaves, Carradine, DeMauri.



## Javelina Club

The Javelina Club is exclusively a men's club, which was organized to promote a wholesome and active school spirit, to maintain a high interest in athletics, and to endeavor to promote a higher level in this field in point of personnel and scholarship.

The club was organized in the Fall of '26, at the close of the football season, but was not very active, due to the lack of interest evidenced by all members. However, in the Fall of '27, the Club roused itself and took on a little life. New members were taken in and various activities planned. Initiation of these new members was held in the "Gym," and, even though they did have to eat their breakfast from the mantelpiece next morning, the candidates were all well pleased with the ceremony.

Then, the activity began. First, there was a dance for the Edinburg Junior College football team on the night following their defeat by the Javelinas. This "struggle" was held in the "Gym," with music by "Shorty's Five."

Wishing to have their pictures in the Annual, the Javelinas decided

Top Row—Fitch, Roberts, Warner, Prince, W. Smith, Pingree, Rutledge.  
Bottom Row—H. Smith, Roper, J. Smith, Shelton, J. Mecklin, V. Smith, Baird.



# The 1928 EL RANCHO

to stage a "Fite Nite." This went over big, with both the contestants and spectators, the notable battle being between "Cab" Cabiness and "Rats" Ayres. This ended in a draw, but will be fought out in shows to come.

A period of comparative quiet followed, but the restless Javelinas, again wishing to vent their anger, agreed to another "Fite Nite." At this show came the culmination of the Filla-Ping feud.

As the crowning event of the year, the Javelina Club gave a party in the "Gym" which was well attended by students and faculty. Everyone reported a good time and plenty of ice-cream.

## OFFICERS

Bob Whitten	.....	President
Raymond Fitch	.....	Vice President
Rupert Mecklin	.....	Secretary and Treasurer
David Roberts	.....	Parliamentarian
Dana D. Prince	.....	Reporter
Frank Warner	.....	Sergeant-at-Arms



Top Row—Ayres, Herrington, Brown, Cage, Manning, Filla, Cannon.

Bottom Row—Crofford, Carner, King, Lilly, Boggan, Adame, Weiss.



## Valley Club

Another successful year has been added to the annals of the Valley Club, and at the close of this year, each member, as is typical of Valley students, has that deeply seated feeling of satisfaction that comes to one who feels that he has done his part in keeping up the club's active work.

During the year the club has enjoyed several entertainments, and has accomplished a creditable amount of work along the line for which it was organized.

The Valley Club was organized, 1925, by Valley students who felt the need of a club to perpetuate the well-known Valley spirit and to link the College more closely with the people of the Valley. The membership in-



Top Row—Herrington, Yates, Henrichson, Bishop, Stewart, L. Crofford.

Bottom Row—Anderson, Foley, Watson, Mrs. Berry, Herrin, M. Berry.



# The 1928 EL RANCHO

cludes practically every student from that section of the State.

The successful work of the association has been due to the faithful and untiring efforts of its sponsors, Miss Ann Kirven and Mrs. May H. Dickens.

## OFFICERS

William Herrington	.....	President
Lorena Yates	.....	Vice President
Norman Bishop	.....	Treasurer
Ruby Henrichson	.....	Secretary



Top Row—Dunham, Miller, Dowis, Dodillet, Doane, C. McEowen, Lynn.

Bottom Row—Bennett, Hall, Laursen, Herrington, R. McEowen, Woodside, Crofford.



# Alpha Sigma

Organized, 1928

Colors: Lavender and Green

Flower: Larkspur

## ACTIVE MEMBERS

Esther Weller ..... President  
Vila B. Hunt ..... Vice President  
Carey May ..... Secretary and Treasurer

Grace Bailey	Margaret Howard
Inez Barkley	Oradelle Laughlin
Siddie Grace Bludworth	Ellen Douglas May
Rachel Bluntzer	Helen McLean
Katie Marie Cardwell	Martha McCurdy
Dorothy Carter	Mildred Nuckols
	Belva Williams

## HONORARY MEMBERS

Lila Baugh

Maurine Hvistendahl

Top Row—Hunt, Weller, McCurdy, McLean, E. May, Baugh, Hvistendahl.  
Bottom Row—C. May, Bluntzer, Nuckols, Bailey, Carter, Cardwell, Barkley.



## B. S. U. Council

### President—

Verner Crofford ..... Fall Term  
Elwyn Powell ..... Spring Term

### Vice President—

Lenora Hays ..... Fall Term  
Elwyn Powell ..... Fall Term  
Norman Bishop ..... Fall Term  
Beth Cameron ..... Spring Term  
Paul Forgy ..... Spring Term  
Jack Partain ..... Spring Term

### Corresponding Secretary—

Florence Arnett ..... Fall Term  
Vivian Herrin ..... Spring Term

### Treasurer—

Ray Damron Fall and Spring Term

### Recording Secretary—

Jack Partain ..... Fall Term  
Verner Crofford ..... Spring Term

### Social Chairman—

Ninon Yeager ..... Spring Term

### Cartoonist—

Nell Boyd ..... Fall Term  
Beatrice Stewart ..... Spring Term

### Student Secretary—

Opal Adair Fall and Spring Term

### Faculty Representative—

Miss Jennie Splawn

### Hostess—

Mrs. Splawn

Top Row—Crofford, Hayes, Powell, Bishop.

Bottom Row—Arnett, Partain, Boyd, Willenberg, Adair.





## Dora K. Cousins English Club

Organized 1925

With the beginning of school activities there was felt a need of an organization to foster the study of all phases of English literature. The Dora K. Cousins English Club has successfully undertaken this work. Many interesting programs and pleasant evenings of entertainment have been enjoyed this year.

### OFFICERS

Willa Woodside	.....	President
Edith Boyd	.....	Vice President
Velma Hargrove	.....	Secretary
Clovis Hickman	.....	Treasurer

Top Row—Woodside, Hickman, Hargrove, Hvistendahl, Pipkin, Rooth, Seright, Agnew.  
Bottom Row—Baker, Wines, Gregg, McAferty, Stone, Boyle, LeCompte, Francis.



# Kappa Omicron Phi

IOTA CHAPTER—1928

National Honorary Home Economics Fraternity,  
Organized at Maryville, Mo., 1922  
Number of Chapters—Ten

## OFFICERS

Esther Allison	.....	President
Eva Hardy	.....	Vice President
Velma Power	.....	Treasurer
Erma Wines	.....	Secretary

## MEMBERS

Esther Allison	Velma Power
Juanita Allison	Loris Welhausen
Esther Foley	Erma Wines
Eva Hardy	Margaret Neely
Vivian Johnson	

Top Row—E. Allison, Wines, Power, J. Allison.

Bottom Row—Foley, Welhausen, Neely, Johnson.



# Nueces County Club

## OFFICERS

Jesse Smith \_\_\_\_\_ President  
Katie Marie Cardwell \_\_\_\_\_ Vice President  
Inez Barkley \_\_\_\_\_ Secretary and Treasurer

## MEMBERS

Letha Agnew  
Juanita Allison  
Alyne Ashmore  
Inez Barkley  
Marie Bedford  
Rachel Bluntzer  
Alpha Boswell  
Omega Boswell  
Nell Boyd  
Edward Brown  
Eva Brown  
J. H. Burney  
Katie Marie Cardwell  
Johnnie Mae Decker  
Nina Faulk Durham

Eva Hardy  
Burl Harper  
Ruby Alta Harrell  
Mozelle Hatter  
Margaret Howard  
Vila Bee Hunt  
Yendys Hunter  
Melva Imken  
Florine Jones  
Owen McKinney  
Helen McLean  
Vannie Belle Matiza  
Claude Mynier  
Albert Pingree  
Elwyn Powell

Francis Powers  
Ruthelle Robbins  
Mrs. Smith Robbins  
Morris Roper  
Karine Shultz  
Henry Smith  
Jessie Smith  
Joe Spurlock  
John H. Stamper  
Clara Thomas  
Louie Weiss  
Eva West  
Alta Whitten  
Bob Whitten  
Anna Lee Whittington

Jesse Smith

Katie Marie Cardwell

Inez Barkley



## Women's Athletic Association

The Women's Athletic Association was organized in the South Texas State Teachers College during the Fall Term of 1927. It is a national organization and its object is to establish fundamental health habits and develop interest in general physical efficiency through athletic sports, hiking, dancing and swimming. All college girls are eligible for membership.

As a means of encouraging regular participation in the various activities of the Association, the point system is used in awarding honors. The honors, however, are symbolic rather than of material value. Points are given for hiking, dancing, tennis, basketball, baseball, volley ball and archery, with additional points to any member making 'Varsity, or all-star teams in any other sport.

For those interested in dancing, there has been organized a dancing club for the promotion of interpretative, character, and eccentric dancing.

One date of interest to the Association is January 14, 1928, when the short recital, demonstrating some of the club's work, was given.

The Dancing Club also gave three numbers as part of the evening's program at a Rainbow Garden Party given by the Women's Club on May 7.

Top Row—Blythe, Dowis, Barber, Hunter, Hancock, Hargrove, Boyd.

Middle Row—Mattiza, Holmes, Fly, Gregg, McAferty, Van Nordstrand, Ashmore.

Bottom Row—Woods, Hoblit, Young, Dunham, Gardner, Collins, Shumate.



# Young Women's Christian Association

## CABINET MEMBERS

Lenora Hays .....	President
Lucille Seright .....	Vice President
Gladys Sedwick .....	Secretary
Margaret Shumate .....	Treasurer
Willa Woodside .....	Devotional
Henriola Gregg .....	World Fellowship
Martine Holbrook .....	Social Service
Maurine Hvistendahl .....	Social Hygiene
Lorena Yates .....	Social Chairman
Ethel Blythe .....	Charming Dress
Clovis Hickman .....	Reporter

Top Row—Hayes, Seright, Sedwick, Shumate, Woodside.  
 Bottom Row—Gregg, Holbrook, Hvistendahl, Yates, Blythe, Hickman.



The 1928 EL RANCHO



# JOURNALISM



## El Rancho

It has been the aim of the El Rancho staff to give to the student body a book symbolic of the past college year, and to produce an annual for our institution that may be offered to prospective students as a testimonial of our appreciation of our happiness in being students here and as an incentive to them to come and join us.

The staff's sincere hope is that this edition of El Rancho will meet with the approval of the student body and the college administration. We have tried to avoid error. This may not have been done, however; but we trust that the errors made will be only of minor significance.

We have tried to carry out a pioneer motif, with the realization that this institution is still young, and is growing in a community that is not far removed from pioneer endeavors in its various fields of progress. It has been a pleasure to record in these pages happenings of this school year, in order that they might bring to us fond memories in days to come.

We appreciate very much the co-operation given us by the adminis-

Frank Warner  
Business Manager

Maurine Hvistendahl  
Editor

Dana D. Prince  
Assistant Editor



# The 1928 EL RANCHO

tration and the student body. We also appreciate the co-operation of the business men of Kingsville and others who have advertised in our book. A word of commendation must be extended to the Service Engraving Company, J. R. Kington Studio, Kingsville Publishing Company, who have contributed much toward the success of El Rancho.

## EDITORIAL STAFF

Maurine Hvistendahl Editor-in-Chief  
Dana D. Prince Assistant Editor  
Frank Warner Business Manager  
Roy Ferguson Art Editor

Jack Mecklin Athletic Editor  
Raymond Fitch Campus Life Editor  
Esther Weller Literary Editor  
Velma Hargrove Organization Editor



Top Row—Weller, Fitch.

Bottom Row—Hargrove, Ferguson, Mecklin.





## The South Texan

A few days less than two and a half years ago, the first issue of the South Texan was published. It was a pioneer venture by a young student body in a new college; and the policy which was adopted by the South Texan's first editorial staff was the steady and rapid growth of this college.

The opening sentence of the South Texan's greetings to the student body in that first issue reads as follows:

"Today heralds the birth of our college paper, the South Texan, named to include, not only our local interests, but those of the whole southern portion of the State of Texas." This has continued to be a part of the policy of the South Texan in all its subsequent issues.

The South Texan has not had a Department of Journalism to determine its style and tone, nor has there often been a student on the editorial staff who had had any previous experience in editing a school paper. Nevertheless, with the wise council and judicious co-operation of Miss Alexander and Mr. Engle, who have been on the staff's committee of faculty advisors from the beginning, the editors have succeeded in producing a paper that has won the compliments of newspaper men, and that was

W. H. LeCompte  
Managing Editor

Letha Agnew  
Editor

Ernest Cannon  
Business Manager



pronounced by at least one member of the Board of Regents as being better than the publication of any of the other Teachers Colleges of the State.

The policy and quality of the South Texan was established by W. H. LeCompte, who was its first editor-in-chief, and, after that, its managing editor until the end of the Fall Term of 1927. While with the paper as editor, it was always Mr. LeCompte's affirmed determination to turn out a paper that our College could own proudly and never need to feel hesitant about sending it out to other colleges as an index of our student accomplishments here. Mr. LeCompte was succeeded as editor-in-chief by Miss Eugenia Baird, now Mrs. Crossley, but continued to hold, as managing editor, a guiding hand on the paper's progress.

Miss Baird was succeeded by Miss Letha Agnew, the present editor-in-chief. Miss Agnew is another one of those exceptions to a rule, in that she is majoring in a science, chemistry, and yet is a highly rated English student. Next to chemistry, journalism is one of her chief interests. Miss Agnew began on the South Texan as Miss Baird's assistant editor-in-chief, and upon Miss Baird's graduation, succeeded her to the first position. Miss Agnew took complete charge of the paper as editor-in-chief and managing editor when Mr. LeCompte left school for a while at the end of the Fall Term of 1927, and proved in a most satisfying and commendable manner her ability to carry on; and it can be truly said, without any discredit to Mr. LeCompte, but rather in compliment, that the South Texan has shown a steady improvement since that first courageous issue in 1925.

Top Row—Hickman, J. Mecklin, Beaver, Boggan.

Bottom Row—White, Forgy, Yates, Blythe.



# THE SOUTH TEXAN

Published by the Student Body of the El Paso Public Schools

## EIGHT HUNDRED STUDENTS TO BE HERE FOR INTERSCHOLASTIC MEET

**HARLINGEN HI WINS FIRST PLACE IN MUSIC CONTEST** **NOTED AMERICAN POET ENTERTAINS** **ROBSTOWN FIRST IN PLAY CONTEST** **PORTER PLEDGES RECORD ATTENDANCE AT U. S. F. C. AS RESULT OF INTERSCHOLASTIC MEET HERE**

The South Texas Branch of the Inter-Scholastic Meet with headquarters here for the first time in the history of the meet, will open its doors to eight hundred students from all over the state on Monday, Oct. 22, at the El Paso Public Schools. The meet is being held at the El Paso Public Schools for the first time in the history of the meet. The meet is being held at the El Paso Public Schools for the first time in the history of the meet.

**Catch Smith Promotes Practice Track Meet**  
The El Paso Public Schools will hold a practice track meet on Monday, Oct. 22, at the El Paso Public Schools. The meet is being held at the El Paso Public Schools for the first time in the history of the meet.

**Family Members Speak in Corpus**  
The El Paso Public Schools will hold a family members speak in Corpus on Monday, Oct. 22, at the El Paso Public Schools. The meet is being held at the El Paso Public Schools for the first time in the history of the meet.

**Girls Give Club In**  
The El Paso Public Schools will hold a girls give club in on Monday, Oct. 22, at the El Paso Public Schools. The meet is being held at the El Paso Public Schools for the first time in the history of the meet.

**Football Club In**  
The El Paso Public Schools will hold a football club in on Monday, Oct. 22, at the El Paso Public Schools. The meet is being held at the El Paso Public Schools for the first time in the history of the meet.

**Junior Class in**  
The El Paso Public Schools will hold a junior class in on Monday, Oct. 22, at the El Paso Public Schools. The meet is being held at the El Paso Public Schools for the first time in the history of the meet.

**U. S. Graduates**  
The El Paso Public Schools will hold a U. S. graduates on Monday, Oct. 22, at the El Paso Public Schools. The meet is being held at the El Paso Public Schools for the first time in the history of the meet.

**Wagon Distinction**  
The El Paso Public Schools will hold a wagon distinction on Monday, Oct. 22, at the El Paso Public Schools. The meet is being held at the El Paso Public Schools for the first time in the history of the meet.

**Wagon Distinction**  
The El Paso Public Schools will hold a wagon distinction on Monday, Oct. 22, at the El Paso Public Schools. The meet is being held at the El Paso Public Schools for the first time in the history of the meet.

**Wagon Distinction**  
The El Paso Public Schools will hold a wagon distinction on Monday, Oct. 22, at the El Paso Public Schools. The meet is being held at the El Paso Public Schools for the first time in the history of the meet.

**Wagon Distinction**  
The El Paso Public Schools will hold a wagon distinction on Monday, Oct. 22, at the El Paso Public Schools. The meet is being held at the El Paso Public Schools for the first time in the history of the meet.

**Wagon Distinction**  
The El Paso Public Schools will hold a wagon distinction on Monday, Oct. 22, at the El Paso Public Schools. The meet is being held at the El Paso Public Schools for the first time in the history of the meet.

**Wagon Distinction**  
The El Paso Public Schools will hold a wagon distinction on Monday, Oct. 22, at the El Paso Public Schools. The meet is being held at the El Paso Public Schools for the first time in the history of the meet.

**Wagon Distinction**  
The El Paso Public Schools will hold a wagon distinction on Monday, Oct. 22, at the El Paso Public Schools. The meet is being held at the El Paso Public Schools for the first time in the history of the meet.

**Wagon Distinction**  
The El Paso Public Schools will hold a wagon distinction on Monday, Oct. 22, at the El Paso Public Schools. The meet is being held at the El Paso Public Schools for the first time in the history of the meet.



# The 1928 EL RANCHO

## Calendar

SEPTEMBER						
S	M	T	W	T	F	S
				1	2	3
4	5	6	7	8	9	10
11	12	13	14	15	16	17
18	19	20	21	22	23	24
25	26	27	28	29	30	

- 22—Fall Term opens.  
30—Faculty reception for students.

- 15—Student elections.  
18—First pep rally.  
20—W. A. A. hike.  
22—S. T. S. T. C.-Edinburg game.  
Javelina dance for Broncos.  
26—Senior Class taffy pull.  
27—Javelina initiation.  
28—Pres. Evans from San Marcos visits S. T. S. T. C.

OCTOBER						
S	M	T	W	T	F	S
						1
2	3	4	5	6	7	8
9	10	11	12	13	14	15
16	17	18	19	20	21	22
23	24	25	26	27	28	29
30	31					

NOVEMBER						
S	M	T	W	T	F	S
		1	2	3	4	5
6	7	8	9	10	11	12
13	14	15	16	17	18	19
20	21	22	23	24	25	26
27	28	29	30			

- 1—Prexy gives dinner for The South Texan.  
4—S. T. S. T. C.-Schreiner game.  
5—Junior-Frosh party.  
10—Prexy gives dinner for El Rancho.  
11—Armistice Day. Dr. Landreth, of Chicago, speaker of the day.  
Senior Home Economics girls entertain Miss Johnson.  
Pigs-Laredo game.  
17—Mr. and Mrs. "Doug" Monroe entertain Javelinas.  
19—S. T. S. T. C.-Fort Brown game.  
24—Thanksgiving Day.  
Hank Smith elected '28 captain.  
28—Y. W. C. A. cabinet reception for members.



# The 1928 EL RANCHO

## Calendar

DECEMBER						
S	M	T	W	T	F	S
				1	2	3
4	5	6	7	8	9	10
11	12	13	14	15	16	17
18	19	20	21	22	23	24
25	26	27	28	29	30	31

- 3—"El Rancho Beauty" feted.
- 6—Javelinas stage first athletic show.
- 7—Y. W. C. A. Candle Service.
- 8—Schubert Quartet entertains.
- 10—El Rancho dance.
- 14—Scholarship Society initiation.
- 15—Miss Wheat has piano recital.
- 16—Music students give recital.
- 18—Christmas vesper service.
- 20—Fall Term exams begin.
- 23—Christmas holidays begin.

- 1—New Year's Day.
- 4—Student favorites chosen.
- 6—"The Family Upstairs."
- 7—Epworth League social for students.
- 10—Historical fashion show.
- 14—Physical Education recital.
- 18—Regents visit S. T. S. T. C.
- 21—San Marcos Glee Club concert.
- 24—Javelina athletic show.
- 26—Men's Glee Club goes to Premont.

JANUARY						
S	M	T	W	T	F	S
1	2	3	4	5	6	7
8	9	10	11	12	13	14
15	16	17	18	19	20	21
22	23	24	25	26	27	28
29	30	31				

FEBRUARY						
S	M	T	W	T	F	S
			1	2	3	4
5	6	7	8	9	10	11
12	13	14	15	16	17	18
19	20	21	22	23	24	25
26	27	28	29			

- 1—S. T. S. T. C.-St. Mary's game at San Antonio.
- 2—Alexander and Engle banquet Seniors.  
Prof. J. R. Manning marries.
- 3—Mrs. Pennybacker lectures.
- 8—Football sweaters awarded.
- 9—Men's Glee Club goes to Alice.
- 10—S. T. S. T. C.-Schreiner game.
- 15—Alpha Sigma party.
- 22—Washington's birthday anniversary.  
Senior Arbor Day.  
Colonial party.
- 24—Men's Glee Club goes to Falfurrias.  
District Meet.



# Calendar

- 10—Ralph Shelton elected '29 captain.
- 14—Winter exams. begin.
- 20—"Three Wise Fools."  
Men's Glee Club on tour of Valley.
- 29—Men's Glee Club home concert.
- 30—S. T. S. T. C.—Robstown Cotton Pickers game.

MARCH						
S	M	T	W	T	F	S
	4	5	6	7	8	9
11	12	13	14	15	16	17
18	19	20	21	22	23	24
25	26	27	28	29	30	31

APRIL						
S	M	T	W	T	F	S
1	2	3	4	5	6	7
8	9	10	11	12	13	14
15	16	17	18	19	20	21
22	23	24	25	26	27	28
29	30					

- 1—April Fool's Day.
- 4—Senior steak fry.
- 7—Y. W. C. A. hike.
- 9—Van Cooke gives recital.
- 12—S. T. S. T. C.-Agua Dulce game.
- 14—Alpha Sigma dance.
- 16—Girls' Glee Club goes on tour.
- 20—District track meet.
- 21—History Club banquet.
- 26—Girls' Glee Club home concert.
- 28—Javelina party.

- 3—Orchestra concert.
- 5—B. S. U. banquet.
- 12—Men's Glee Club to Aransas Pass.
- 13—Men's Glee Club to Corpus Christi.
- 17—Faculty recital.
- 18—Senior Class play.
- 19—Junior-Senior banquet.
- 26—Class Day.
- 27—Baccalaureate sermon.
- 28—Commencement.

MAY						
S	M	T	W	T	F	S
		1	2	3	4	5
6	7	8	9	10	11	12
13	14	15	16	17	18	19
20	21	22	23	24	25	26
27	28	29	30	31		



## Calendar

JUNE						
S	M	T	W	T	F	S
			1	2	3	4
5	6	7	8	9	10	11
12	13	14	15	16	17	18
19	20	21	22	23	24	25
26	27	28	29	30		

- 7—Summer Term opens.  
 8—Methodist Church reception for students.  
 22—Frederick Gunster's recital.  
 25—First Summer South Texan issued.

- 1—Dr. Phelps addresses students.  
 4—Fourth of July.  
 6—Faculty recital.  
 8—Noah Beilharz recital.  
 29—Wallace R. Clark recital.  
 30—College faculty entertains.

JULY						
S	M	T	W	T	F	S
						1
3	4	5	6	7	8	9
10	11	12	13	14	15	16
17	18	19	20	21	22	23
24	25	26	27	28	29	30
31						

AUGUST						
S	M	T	W	T	F	S
	1	2	3	4	5	6
7	8	9	10	11	12	13
14	15	16	17	18	19	20
21	22	23	24	25	26	27
28	29	30	31			

- 8—Biology Class makes trip to Mustang Island.  
 11—Ex-Students Association organized.  
 12—Men's Glee Club recital.  
 13—Prexy entertains English Club.  
 17—Cantata presented by mixed chorus.  
 19—Senior play.  
 21—Baccalaureate sermon.  
 22—Commencement.  
 25—Summer term closes.





Mr Flowers



Board of Regents



Mr. Williams



Visitors



Prexy with board Members



Rotarians



Our Prexy





Mr. John Dunn  
Collector of  
Historical Relics

Early Texas Arms and Ammunition





Stylish Attire  
of the 1870



Industrial & Political Relics



BYPV Banquet



The Queen's Court



Class in Interpretative Dancing



The Queen's Court



Historical Style Show



1927  
Junior-Senior  
Banquet



Scene from Thursday Evening



Scene from "Neighbors"



Scene from "Neighbors"



Scene from Hearts to Mend



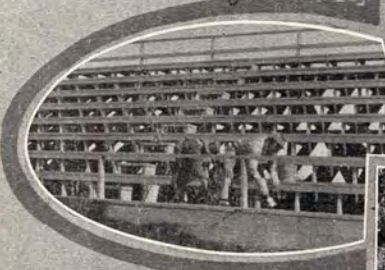
The Boosters at the Edinburg Game



Painters are here



The T at the Game



The Bleachers



Javeina



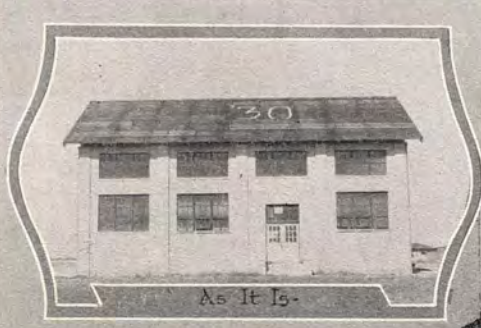
Between Halves



The Forum



Baby & Aggie



As it is



As it will be



A Lassie in waiting



Beach Strollers



Ruby, Bee & the byke



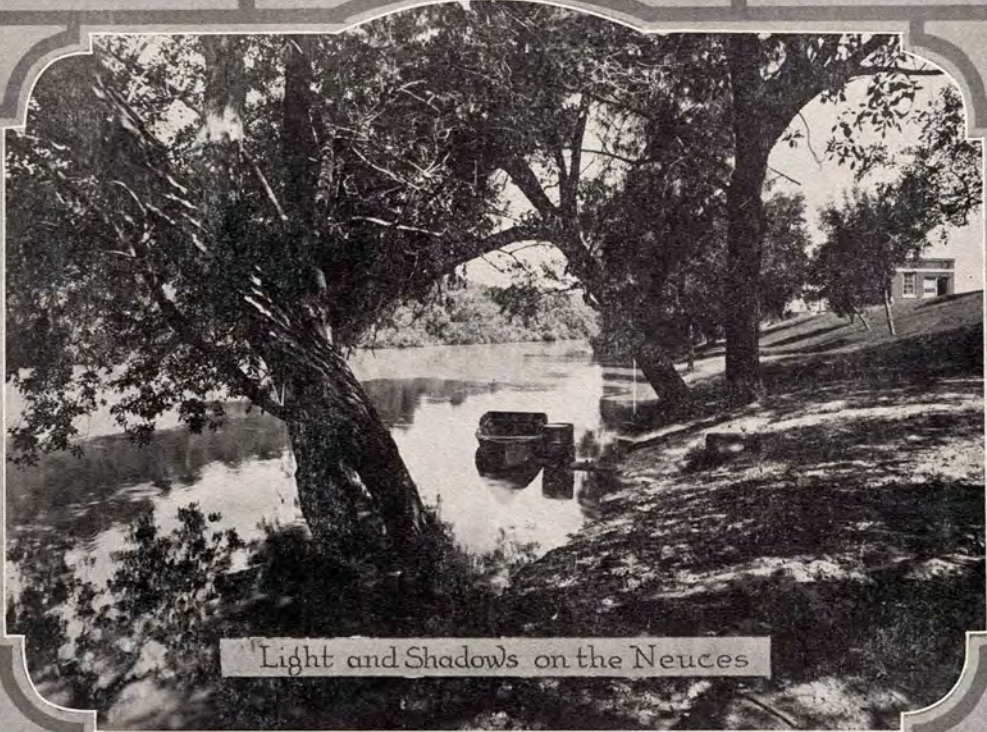
On top near Glory



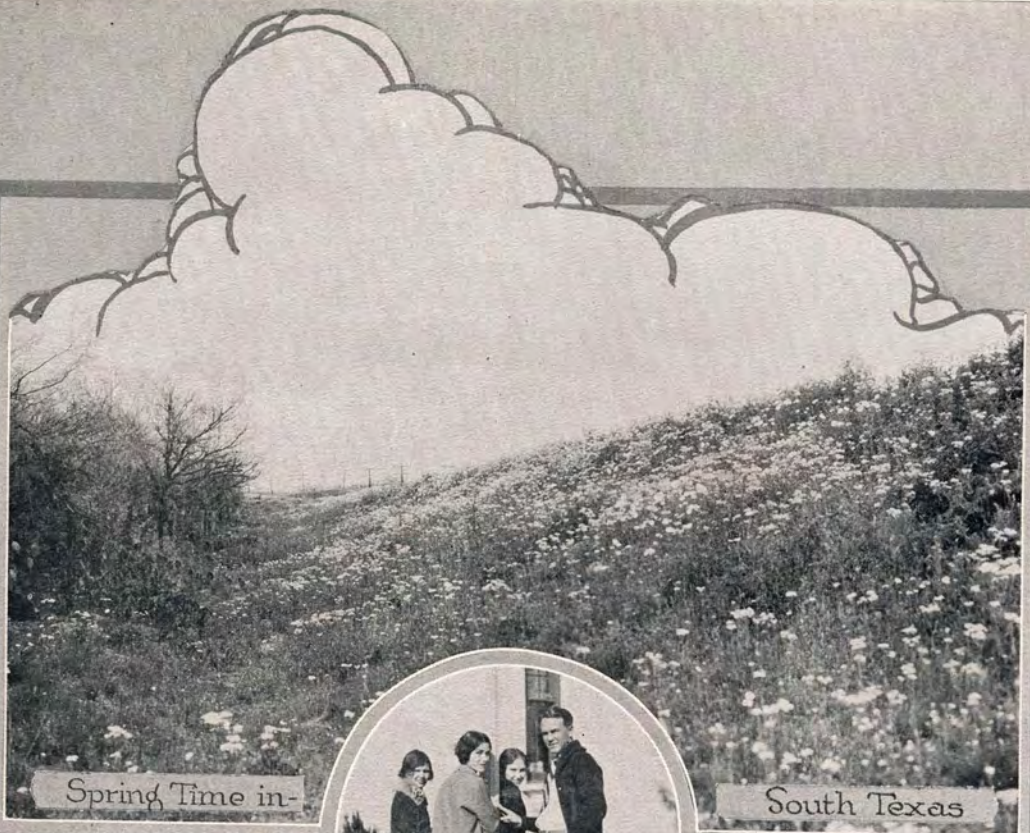
7 Co-eds



Three Little Maidens



Light and Shadows on the Neuces



Spring Time in-

South Texas



Lightning Bugs



Vila and the Lamp Post



Smile — Betty!



Russian Dancers

Senior Arbor Day



Mike and Ike



The Triplets



The Boswell Twins





Freshmen Initiation



Interrupted



Another Freshmen Initiation



That old line



Bound Knowledge



Knute Rockne himself



Me and Myself



28's Sponsor from first to last



A Judge of good Music



Lets have Quiet please



Among My Souvenirs



Three



The Beauties Friend

Martha

Studying



Art Studio



A Lonely Miss



I hate to Leave you, Now



Now

Ready Camera

Me and my Shadow



A Busy Corner

in the Library



A College Quartet



Now Smile



Posed by Request



In A Little Spanish Town



A Rideress



Its a long way to Tipperary



-Home Economics-



On the Rocks



Hey Flo, your Search is Ended



She Stoops to conquer



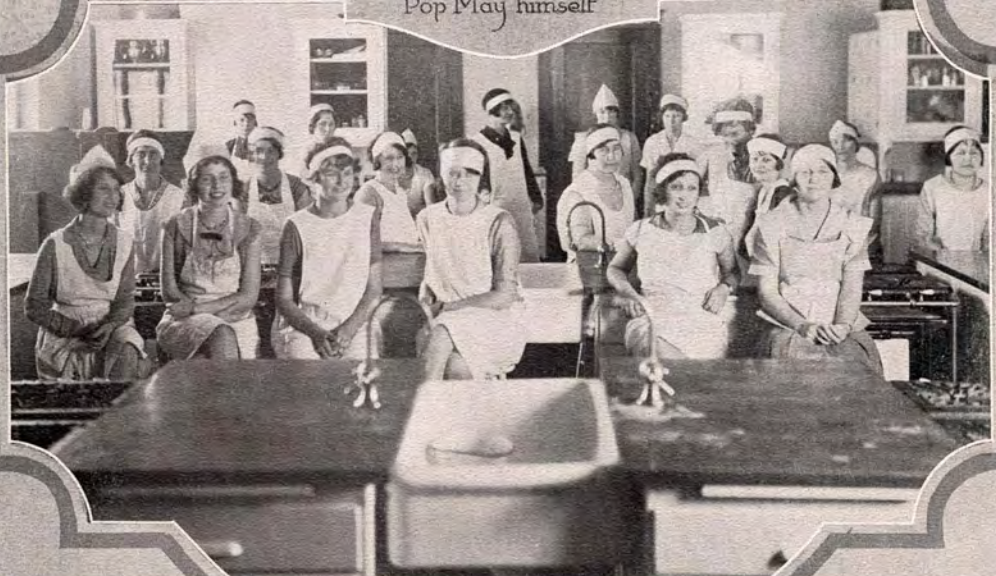
AT Party



"Pop May" himself



Looking for the Birdie



"Domestic Science"



Hank and Maggie



Rachel



The Editors in Chief



Thats all Boloney



The Captam & his Captain



As it used to be



Students?



At the Library Desk



Exterior Decoration.



Bathing Beauties



Tweet - tweet.



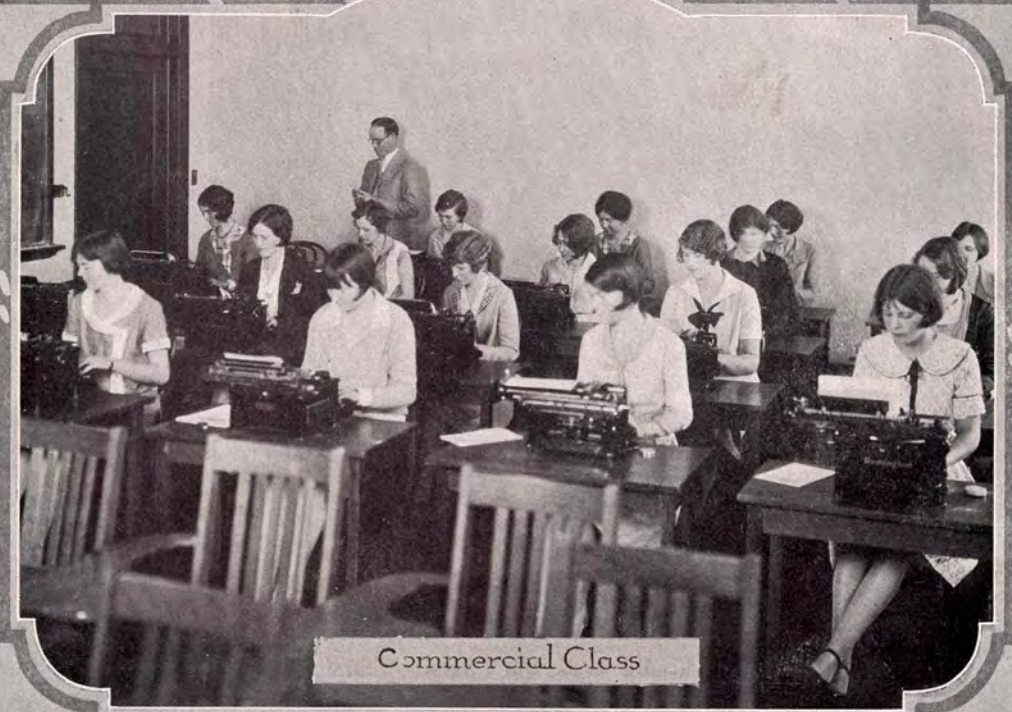
"This is the Life"



"Get Busy"



Open the Door to Knowledge



Commercial Class





Perched so high



Heavy heavy hangs over thy Head



Sallie and Maggie

Big Chief Ray



The Biology Lab.



Flowers



I Got Mine!



A Colonial Miss



Late as usual



Blarney?



Reynaldo-



A Rider



Chemistry Lab.



A G R I C U L T U R E



A T H L E T I C S



# "T" ASSOCIATION



**Captain**  
Frank Warner



**Co-Captains**  
Jesse Smith  
Rupert Mecklin

Arthur, Melbourne  
Baird, Julian  
Elmore, Frank  
Elsner, Horace  
Filla, Paul  
Fitch, Raymond  
Gomez, Simon  
Hensleigh, Albert  
Jackson, Louis  
Mecklin, Jack  
Mecklin, Rupert  
Miller  
Milligan, Roland  
McCracken, Maurice  
Ping, Vernon  
Prince, Dana D.  
Robertson, Rankin  
Roper, Morris  
Rutledge, Eddie  
Shelton, Ralph  
Shelton, Roy  
Smith, Jesse  
Smith, Henry  
Smith, Weldon  
Tomlinson,  
Warner, Frank  
Weiss, Louie  
Whitten, Robert



**Captain**  
Roland Milligan



**Captain**  
Louis Jackson



Lewis J. Smith---Director of Athletics



Coach Smith came to South Texas State Teachers College in the fall of 1925. He is a graduate of Sam Houston State Teachers College, and while there won many honors in the athletic field.

Coach Smith deserves much for making the most of a scarcity of material in all fields of athletics and for bringing to the fans of South Texas State Teachers College the class of athletics that is seen in much larger schools.

Although only three years old, the athletics teams of South Texas State Teachers College command respect and consideration from all opponents.

The rapid development of athletics in the last three years is only the beginning of a long, successful career to be enjoyed by the College.

For setting the standard of achievement in both victories and sportsmanlike contestants, much credit should be given to Coach Smith.



## Jack Mecklin---Business Manager



The Javelina Football Team, for the first time in its short history, had a guiding hand in the form of a business manager.

He was selected by the team and coach for his unfailing devotion to the Javelinas and what they stood for, and for his spirit that never flagged when the Javelina squad faced defeat. He was there, looking after the need of every man, cheering him when hurt, bolstering him up when his spirit was ebbing.

Perhaps no man in the College was suited better for the job. Because he knew football, he knew the Javelinas, their whims and fancies, and because he had that spirit of "never beaten until the last whistle," he was chosen the business manager of the Javelinas of 1927 that went through a season of four wins and one loss.





## Athletics

---

Athletics may make or they may break a school. They play a great part in heightening the spirit of the institution, increasing the attendance and advertising. There was never a student yet whose pulse does not quicken when he sees his football team trot out on the gridiron determined to do or die, or who does not yell himself or herself hoarse out in the "Gym" when the Basketball team is fighting for the lead that means another victory for the home team, and a little more pride in the heart of the student.

True, there must be defeats, and though we try to meet them with a smile, it hurts us **way down there**, when we see the Alma Mater go down to a defeat. No disgrace, to be sure, but it is disheartening and it takes spirit to follow and support a losing team.

We have never had a team at South Texas State Teachers College that has been a steady loser, so we do not know what it is to fight for a losing team. Our athletic teams have always won more than half their games, and let us hope they will continue to do so.

This season of 1927, the Javelina Football Squad enjoyed a season of four wins and one defeat, that one being administered by the Schreiner Mountaineers, whom we had rather whip than any other team. They are our rivals, and when we go down in a game against them, we go down fighting—fighting with all that old vim and vigor of a cornered Javelina.

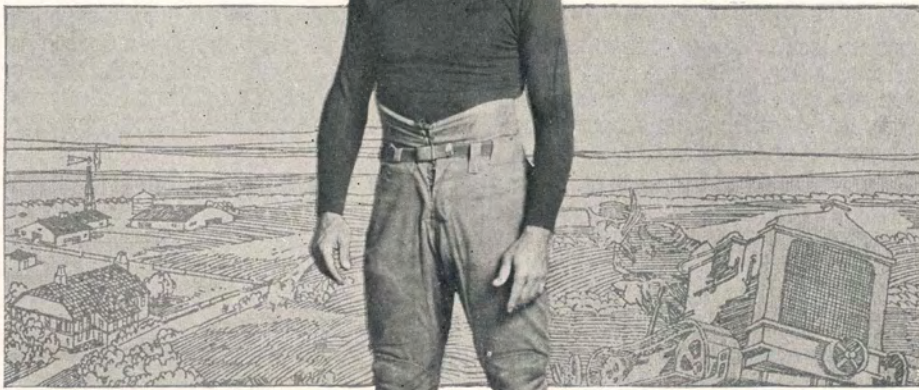
The Basketball team did not have such an excellent and enviable record in basketball, having won five and lost seven. They encountered some of the strongest competition in Southwest Texas, but usually won by large scores and lost by small ones.

Baseball lived but a few short weeks, and expired after the Javelinas had played twelve and won six games to end the season with a percentage of .500. True, it was not an excellent record, but an even break is mighty fine—considering.

Track at South Texas State Teachers College has never had a large following, but this season, quite a bit of interest was aroused, due to the fact that several new men were added to the personnel. The notable achievement of the "thinly clads" was a place in the half-mile relay at the Texas relays, which of course boosts their stock a little.



The 1928 EL RANCHO



FOOTBALL



## The Football Season

The 1927 football season was easily the most successful in the history of the College, from the standpoint both of the numbers of games played and won and the excellent spirit prevailing among the members of the team. Under the leadership of Captain Frank Warner, the Javelinas never admitted they were whipped, and commanded the respect of not only their adversaries, but of the supporters backing up the various teams played; for the final whistle always found the Herd rooting as hard as they had been at the beginning of the game. Only five lettermen returned for this season; but plenty of new material made its appearance, and it was evident from the first day of training that the Javelinas were going to be hard to beat. Five games were played, of which the Javelinas lost one and won four, piling up a total of 131 points to their opponents' 19. This data makes clear that the Javelinas were not only an excellent defensive team, but one that knew how to make points while they were keeping their own goal line inviolate.

On the first Friday morning after the opening of school fifteen Javelinas piled into a 'bus, and were on their way to San Antonio for the first game of the season with St. Mary's University. The Rattlers were

Top Row—W. Smith, Mecklin, Baird, Ayres, Harry, Rutledge, Beaver.

Middle Row—Cage, Ping, Ralph Shelton, Robertson, Whitten, Elsner, Fitch, J. Smith, Roper.

Bottom Row—Cabiness, Arthur, Roy Shelton, Capt. Warner, Herrington, Weiss, H. Smith, J. Mecklin.



## The 1928 EL RANCHO

hailed as one of the strongest elevens in Texas, and the Javelinas went into the game doped as easy meat for them. But the dope had been reckoned without taking into consideration the fighting spirit of the Hogs, and at the end this spirit told. The game was played on a muddy field and rain fell steadily until the end. Eleven tired, mud-besmeared, wet, but happy Javelinas grabbed the soggy ball and ran out of the rain with the long end of a 9-0 score. Twelve men played this game, and everyone was a hero. Eddie Rutledge's dependable toe accounted for three of the points, while Warner ripped through the highly touted Rattler line, which had been pounded to pieces by the Javelina forwards, for another six points. Vengeance had been taken for the Javelina's defeat last year, and it was a joyous crowd that returned to S. T.C. the following day.

A two weeks' rest put the Javelinas in perfect trim for the game with Victoria Junior College, and the plucky little eleven from that city tried in vain to stop the charging Javelinas, who passed, ran ends, and hit the line until a total of 39 points had been added to their credit. The Junior College boys were unable to tally. Every man in the Javelina backfield accounted for a score, while the line did their work nobly in resisting any attack that their opponents had to offer. This game was played before a record crowd for College Park—a crowd eager to see the conqueror of St. Mary's in action.

The Broncos from Edinburg Junior College were next in order for the Javelinas. This proved to be one of the hardest games of the season. True to tradition, the Broncos bucked, and, catching the Javelinas off guard in the first part of the game, carried the ball to the one-yard line. For a few tense minutes it seemed that the Javelinas were going to be scored



## The 1928 EL RANCHO



Left to Right—Captain Frank Warner, (fullback); Henry Smith, (half); Eddie Rutledge, (half).

upon. But the Herd woke up with a rush, held the Broncos for downs, took the ball, and carried it 95 yards down the field for a touchdown. Warner, Hank Smith, and Jesse Smith were outstanding in this advance, while Rutledge was heaving passes with unerring accuracy. The Javelina defense stiffened to such a degree that the Broncos never threatened again, and the work of the line from this point was a feature of the game. It was a case of too much Whitten, Weiss, Elsner, Roper and Sheltons. Another tally was made in the third quarter, and the game ended with the Javelinas in position for the third score of the game, but they had to be content with a total of 14 points to the Broncos' 0.

What was acknowledged to be the hardest game on the Javelina schedule was played the following Saturday with the Mountaineers of Schreiner Institute. The Herd left for Kerrville on Friday, spent the night



## The 1928 EL RANCHO



Left to Right—Jesse Smith, (quarter); Weldon Smith, (half); Morris Roper, (tackle).

at Boerne, and were ready for the game Saturday. The illness of Coach Smith prohibited him from making the trip, and the Herd was in charge of Mr. Harper Allen. The first quarter was all for the Javelinas, and it looked as though a third victory was going to be theirs, but the Mountaineers began to wear the Herd down by sheer weight and numbers, and scored six points in the first half. It was a determined line of Javelinas that went into the game for the second half, and they not only held Schrenier, but took the ball and advanced it to the ten-yard line, where an unlucky break lost it. From that point on, the game was Schreiner's, for the Javelinas were worn out by their strenuous efforts, and it was only their indomitable spirit that kept the Mountaineers from scoring a dozen touchdowns more, instead of one. The end of the game found many Mountaineer fans cheering for the fighting Hogs, and though the score was 14 to 0 for Schreiner, the Javelinas won a moral victory at Kerrville. Warner, Bob Whitten, Prince, and Roper were acclaimed as the heroes of this game, for they bore the brunt of the Mountaineer attack.



## The 1928 EL RANCHO



Left to Right—Roy Shelton, (end); Horace Elsner, (guard); Ralph Shelton, (end).

The last game of the season was played at home with the Soldiers from Fort Brown, Brownsville. The Soldiers had the weight and plenty of good football, but they were utterly unable to stop the Javelinas, who, smarting from the defeat at Kerrville, were looking for some one on whom to vent their fury. Consequently, they piled up their largest score of the year, 59 points; but in doing so they failed to prevent a Soldier back from picking up a fumble and getting away for a tally. Every class of football was seen in this game—punting, passing, running ends, fake plays, line smashes, drop-kicking, and straight football—in all of which the Javelinas satisfactorily demonstrated their proficiency.

Realizing the value of the second string, and appreciating their loyalty, Coach Smith arranged three games for the Pigs. The first of these was played with the Robstown Cottonpickers, high school district champions. The Pigs easily demonstrated their superiority, although never having practiced together, and humbled the Cottonpickers to the tune of 19 to 0.



## The 1928 EL RANCHO



Left to Right—Julian Baird, (end); Dana Frince, (center); Louie Weiss, (guard).

Their second game was played with the Buccaneers of Corpus Christi High School, and it was said that this was the best game played in Corpus Christi this season. Neither team was able to score in the first three periods, and it was only with three minutes to go, that R. Mecklin ran a punt back for fifty yards and Rutledge passed to W. Smith for the only score of the game.

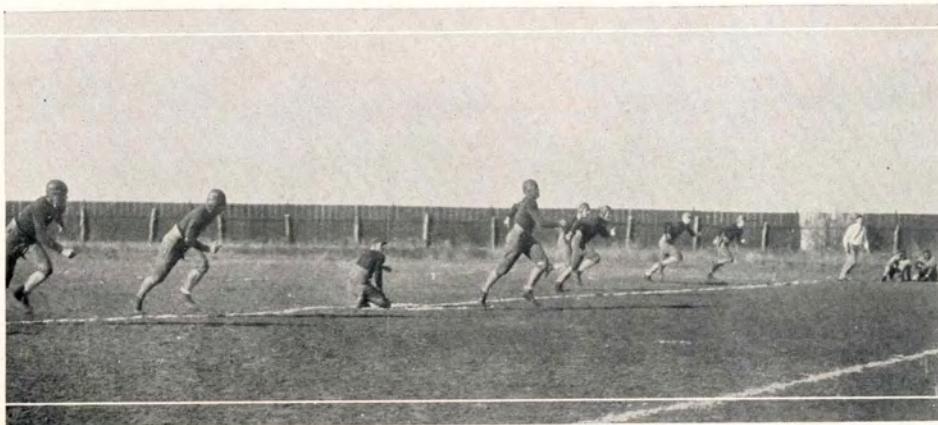
The Saturday following the Fort Brown game, the Pigs boarded the S. T. C. 'bus and took off for Laredo, there to meet the Laredo Tigers, champions of that district. According to Laredo newspaper accounts, the Tigers were making a clean sweep of the game until Harry, of the Pigs, was rushed into the game. With his advent, the Pigs took on new life, and speedily overcame the six point lead of the Tigers, ending the game with the large end of a 13 to 6 score. This ended the Pigs' season; and the winning of this game gave them a hundred per cent record.



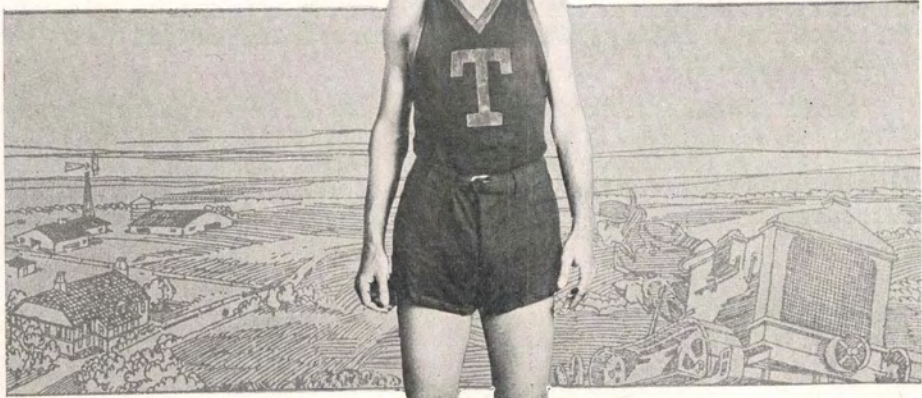


## Football Schedule

S. T. S. T. C. ....	9	St. Mary's University .....	0	At San Antonio
S. T. S. T. C. ....	39	Victoria Junior College .....	0	at Kingsville
S. T. S. T. C. ....	14	Edinburg Junior College .....	0	at Kingsville
S. T. S. T. C. ....	0	Schreiner Institute .....	13	at Kerrville
S. T. S. T. C. ....	59	Fort Brown .....	6	at Kingsville
S. T. S. T. C. ....	131	Opponents .....	19	
Pigs .....	19	Robstown .....	0	at Robstown
Pigs .....	6	Corpus Christi .....	0	at Corpus Christi
Pigs .....	13	Laredo .....	6	at Laredo
Pigs .....	38	Opponents .....	6	



The 1928 EL RANCHO



BASKETBALL



## The Basketball Season

With four letter men as a nucleus, Coach Smith began before Christmas the task of building an aggressive basketball machine. Some fifteen or twenty men came out for practice, and, out of this number, ten were selected for the Javelina squad. A few preliminary games with nearby high school teams gave promise of a successful season for S. T. S. T. C. This promise was given greater prospects of fulfillment after the holidays, when Coach Smith, returning from his Christmas vacation, brought back with him Frank Elmore of Conroe, a former Austin College star. This was a material gain for the Javelinas, as Elmore proved to be a good offensive player, and it gave them a full team of five letter men with which to begin the season.

On the 20th and 21st of January the highly touted Edinburg "Broncos" invaded Javelina territory for a two-game series. As the first of these games marked the initial appearance of Coach Smith's "1928 model" basketball team, and as the fighting form of the boys in the presence of a real adversary was still a matter of speculation, the Javelinas started an

Top Row—Fitch, Ayres, Pingree, Noles, Arthur.  
Middle Row—Coach Smith, Adame, Robertson, Ping, Roper.  
Bottom Row—Elmore, Prince, Captain Milligan, Roy Shelton, Ralph Shelton, J. Smith.



## The 1928 EL RANCHO

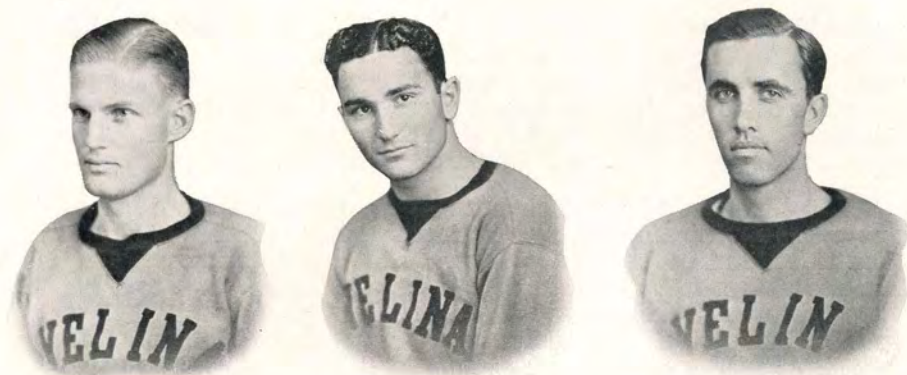
early offensive, which netted them 28 points to the Broncos' 8 at the end of the half. The second string was sent in during the latter part of the game. They also showed good form. The game went to the Javelinas by the score of 48 to 24. The second game was practically a duplication of the first, except that the score was held down on both sides. The Javelinas took 31 points and allowed their opponents 17.

The Javelinas played their next four games away from home. This was a disastrous campaign for the team. The first half of these games were played in San Antonio on February 1st and 2nd, and went to the St. Mary's Rattlers to the tune of 34 to 28 and 31 to 25. The Javelinas then journeyed over to Kerrville to be entertained on February 3rd and 4th by the Mountaineers. The Schreiner boys were good hosts, but they administered two more defeats to the Javelinas and sent them home unrejoicing. The Schreiner games went to the Mountaineers by 19 to 16 and 30 to 26. These were close games, but the breaks went to the Highlanders.

Immediately upon their return the Javelinas began ironing out all those little wrinkles that had contributed to their defeat while away from home and strengthening themselves toward giving the Mountaineers a tough assignment in the return games, which were to be played in the "Javelina Pen." The first of these games went to the Javelinas by the



## The 1928 EL RANCHO



Left to Right—Captain Roland Milligan, (forward); Frank Elmore, (forward); Rankin Robertson, (center).

gratifying score of 37 to 23. The second game, however, was a hand-to-hand conflict, and when the final whistle blew the boys from Kerrville had the edge on the game by two points. The score stood 28 to 26, for Schreiner.

The St. Mary's Rattlers came Javelina hunting on February 10 and 11. The first night found them out of form and the Javelinas romped over them to a 37 to 23 victory. On the second night the Rattlers staged a comeback and took the long end of a 31 to 21 score.

The season, so far, had not been a frolic for the Javelinas, but they



## The 1928 EL RANCHO



Left to Right—Dana Prince, (guard); Ralph Shelton, (guard); Morris Roper, (guard).

were still in fine fighting spirit and were looking about for another affray with some worthy opponent. A two-game series was accordingly arranged with the Taft Independents. The first of these games was played Taft. The Javelinas were met by a very snappy offense and a strong line of defense, which left them with the short end of a 32 to 24 score. The second game was played on the Javelina court before the largest crowd of the season. The Javelinas were in their own pen now, and they whipped the invading Independents out by the topheavy score of 35 to 23.

Throughout the season "Teneha" Robertson, Elmore and Captain Milligan were the stellar performers on the offensive, while Captain-elect Shelton and Prince were the high lights on the defense.



# The 1928 EL RANCHO



Left to Right—Raymond Fitch, (center); Jesse Smith, (guard).

The scoring of individual players and the games' scores for the season are as follows:

Milligan	143	January	6	S. T. S. T. C.	41	Corpus Christi	14
Elmore	115	January	13	S. T. S. T. C.	37	Chapman Ranch	24
Robertson	82	January	20	S. T. S. T. C.	48	Edinburg Junior College	24
Prince	55	January	21	S. T. S. T. C.	31	Edinburg Junior College	17
Fitch	14	February	1	S. T. S. T. C.	28	St. Marys University	34
Shelton	7	February	2	S. T. S. T. C.	25	St. Marys University	31
Smith	4	February	3	S. T. S. T. C.	16	Schreiner Institute	19
Ping	4	February	4	S. T. S. T. C.	26	Schreiner Institute	30
Roper	3	February	10	S. T. S. T. C.	37	Schreiner Institute	23
		February	11	S. T. S. T. C.	26	Schreiner Institute	28
		February	17	S. T. S. T. C.	37	St. Marys University	25
		February	23	S. T. S. T. C.	21	St. Marys University	31
		February	27	S. T. S. T. C.	24	Taft	32
		February	28	S. T. S. T. C.	35	Taft	22



The 1928 EL RANCHO



BASEBALL





## The Baseball Season

---

"In the spring the young man's fancy lightly turns to——" baseball; at least that's where several young men's fancies turned in the spring of 1927. Very little interest was shown by the student body for this great American pastime, but in spite of this the members of the squad worked faithfully under the guiding hands of Captain Jackson and Frank Warner, both of whom had had a good deal of experience in that line of sport.

The opening game of the season was played with Falfurrias and the Javelinas were bested, 10 to 8. This was due mostly to errors on the part of the Javelinas and failure to hit in the pinches.

Following closely on the heels of this defeat, came another disaster

---



## The 1928 EL RANCHO

in the form of a 9 to 0 defeat by the Alice Hi Coyotes. The Coyotes had an experienced team whose hitting, coupled with Javelina errors, allowed them to take all the runs of the game.

In their third attempt, however, the Javelinas managed to eke out a 9 to 8 win over Falfurrias in eleven innings of play. This game was featured by the hard and timely hitting of Gomez, Warner and Jackson, with Warner hitting two for the circuit.

The fourth game of the season was won by the Javelinas, who vanquished the Coyotes from Alice Hi to the tune of 8 to 6. In this game we have Captain Jackson in the stellar role, with that gentleman hitting two homers in the afternoon performance. Filla pitched neat baseball, after Jones had retired in his favor.

Following this game, came the annual clash with the Kingsville Hi.



## The 1928 EL RANCHO



Left to Right—Captain Louis Jackson, (3rd base); Frank Warner, (2nd base); Paul Filla, (pitcher).

Jones pitched the full game for the Javelinas and hurled them to a 12 to 10 victory.

Then came the third game with Falfurrias, which the Hogs won, 6 to 5. Featuring the game was the work of the outfield, "Dutch" Smith, Roland Milligan and Bob Whitten. All of these men accepted hard chances during the game. Filla pitched the nine innings for the Hogs and hurled a creditable game.

In an abbreviated game of five innings the Javelinas defeated the Robstown Cotton Pickers, 4 to 1. Gomez's heavy hitting featured the five



# The 1928 EL RANCHO



Left to Right—Roland Milligan, (outfield); Melbourne Arthur, (outfield); Simon Gomez, (1st base).

## BASEBALL RESULTS

S. T. S. T. C.	8	Falfurrias	10
S. T. S. T. C.	0	Alice	9
S. T. S. T. C.	9	Falfurrias	8
S. T. S. T. C.	8	Alice	6
S. T. S. T. C.	12	Kingsville Hi	10
S. T. S. T. C.	6	Falfurrias	5
S. T. S. T. C.	4	Robstown	1
S. T. S. T. C.	10	Bishop	2
S. T. S. T. C.	11	Robstown	2
S. T. S. T. C.	4	MoPac	6
G. W. L. Pct.		Javelinas	10 7 3 .700





OTHER SPORTS



## The Track Season

Until the Spring of '28 little attention has been accorded track, but with the addition of several high school and college stars to the team this year, business began to pick up. Elmore, Keeling and "Speedy" Morton were the transfers from Austin College, while "Hank" Smith and Roper were two field men from Robstown High, and Eddie Rutledge was a track man from Kenedy High.

These six men, along with Ralph Shelton and Co-captains Smith and Mecklin, formed the nucleus of a track team that is the best the college has had.

The first meet of the current season, in which Kingsville Hi, Robstown Hi, and Corpus Hi and Taft Hi participated, came at Robstown. The world's fastest human, Charles Paddock, was also at this meet. In addition to running the 100 and 220 yard dashes, Mr. Paddock gave a fine talk on his career as a sprinter and gave some splendid advice to all young athletes gathered there.

In this meet the college 880 relay team stepped out to win first place in that event, while Ralph Shelton and Jesse Smith stepped a fast race with Charles Paddock in what was probably the fastest 220-yard dash

Top Row—Coach Smith, Cabiness, Knight.

Middle Row—Keeling, Adams, Herrington, Rutledge.

Bottom Row—H. Smith, Martin, Roy Shelton, Captain J. Smith, Captain R. Mecklin.



## The 1928 EL RANCHO

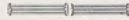
ever run in this section. Paddock's time was 21.5 seconds, while Elmore's was 21.9 seconds, only .4 of a second behind the "world's fastest."

The following Friday, the relay team, composed of Elmore, Smith, Mecklin and Shelton, ran a fast half to place fourth in the half-mile relay, in which thirteen of the fastest colleges in the country were represented. The Oklahoma Baptists won the event and in doing so, set a new record.

Morton in the broad jump, Smith in the shot-put, and Keeling in the high hurdles, all showed up exceedingly well.

The Javelinas had scheduled a dual meet with the Schreiner Institute Mountaineers, but due to the failure of the two schools to agree on dates, this meet was called off.

The track season has been one of more activity than the previous season, and, perhaps in the years that come, or over next year, the students will realize that value of this form of sport and rally to its support, even more so than this year.



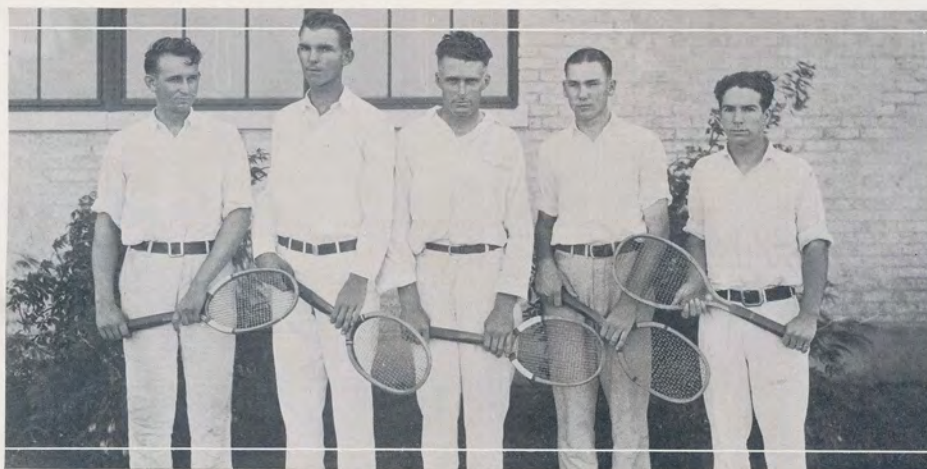
## The Tennis Season

Under the efficient coaching of Professor Clyde Reed, S. T. S. T. C. placed its first 'varsity tennis team in the field during the 1927 season. Coach Reed has been one of the leaders in making tennis a major sport in the College, and his selection as coach met with the approval of the entire squad that turned out for the Javelina tennis team.

During the season the Javelinas met the players from Violet, Robstown, Corpus Christi and Beeville; and while the College men were not ever victorious in these matches, the majority were recorded as victories for S. T. S. T. C.

Albert Hensleigh, captain, Carroll Hornburg, student manager, Vernon Ping and Jesse Harrell were named as lettermen at the close of the season.

Left to Right—Hornburg, Ping, Hensleigh, Harrell, Beaver.





The 1928 EL RANCHO



## WOMEN'S ATHLETICS

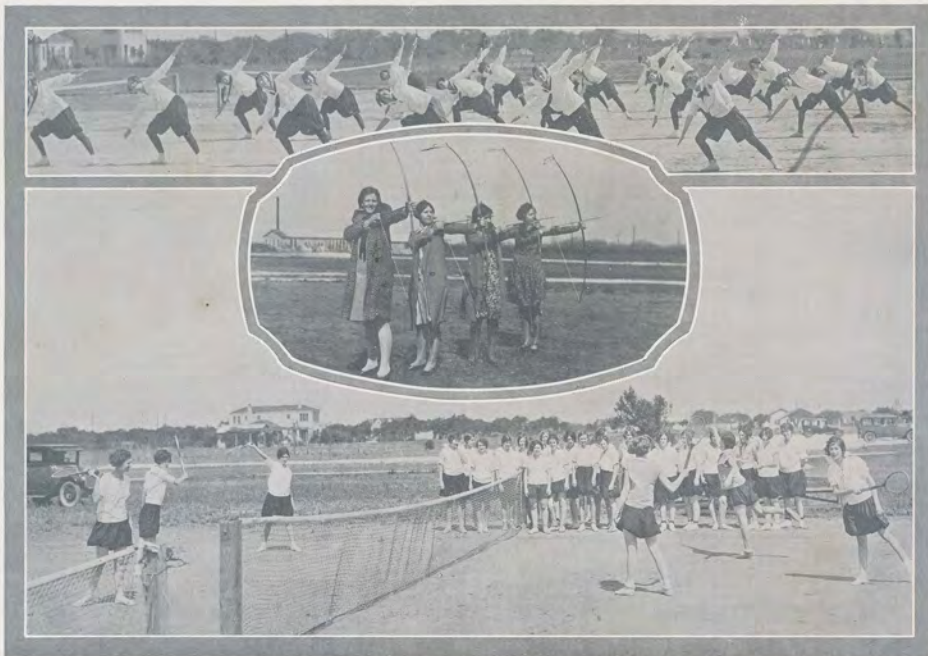


## Gym Classes

This year there was an enrollment of 125 girls in Physical Education 1, 2, 3. This course is designed primarily for Freshmen girls, and it aims to give a general idea of all physical activities. Attention is given to individual or corrective gymnastics. Some Danish day orders are carried out. Plays and games especially suitable for the playground and school-room, elementary folk dances, and technique of more highly organized team games are also considered. The value of stunts and tumbling in relation to a flexible body and the use of physical efficiency tests in determining physical ability, are emphasized.

Physical Education 115, 125, 135, is offered to girls with Sophomore standing. Emphasis is placed upon technique of team games, such as soccer, basketball, volleyball, tennis and baseball. The girls in these classes are given opportunities to referee or umpire class games.

Physical Education 201, 202, 203, is called folk dancing, and includes representative dances from different nations, also character and clog dancing. Special attention is given to the fundamental and natural rhythms and movements of the body.



## Fannie Lee Blythe---Director of Athletics



Miss Blythe came to take the position of Director of Physical Education for Women, which was left vacant by Miss Anita Stewart. Before coming to South Texas State Teachers College, Miss Blythe attended school at the Battle Creek College, of Battle Creek, Michigan. Although she has been living in the northern and western States most of her life, she admits that she likes the "Sunny South" very much.

She is very interested in the development and improvement of Physical Education which is being manifested throughout the country. Since girls no longer participate in inter-collegiate contests, inter-class contests are held and under the supervision of Miss Blythe a great amount of enthusiasm is shown.



## Basketball

During the 1927-28 season of athletics, basketball was the sport which most of the girls were best acquainted with, and therefore best liked; however, it was new to a few. During the four months of basketball at S. T. S. T. C. interest was aroused and stimulated in as many girls as possible, with the idea to play for the joy of playing and for the success of the whole team, rather than for individual or personal honor.

The real basketball season opened at S. T. S. T. C. the first week after Thanksgiving, with only ten or twelve girls interested enough to want to play or toss balls at the basket outside of a class hour. After the first week more enthusiasm was manifested and teams were organized in each of the physical education classes. The five teams elected for their respective captains: Edith Boyd, Lorraine Watson, Esther Bickford, Rebie Robbins and Ruthelle Robbins. Each team played one game with every

Top Row—Boenig, Robbins, Dunham.

Middle Row—Mynier, Gardner, Trant, McKinney, Woods, Fry, Powers.

Bottom Row—Watson, Magnuson, Hatter, Captain Boyd, Haertig, Yates, Cannon.



other team outside of class hours. These games usually took place at the Gym in the evening between 7:00 and 9:00 o'clock. The games were played according to the approved basketball rules for women, on a three-division court, and with six players to each team. Lorraine Watson's team had the highest total score at the end of the season and was considered the championship class team in basketball.

During the four months over forty girls took active interest in the game and played in at least one inter-class game; and about twenty-five girls played in all four interclass games.

At the close of the season a 'varsity team was selected by the coach and representatives from each of the teams. They were to be selected on the basis of technical skill, health, spirit and scholarship. Three forwards, three guards, one jumping center and one running center, were finally decided upon. The players selected were: Edith Boyd, forward, who was elected captain; Jean Dunham, forward; Lorraine Watson, forward; Rebie Robbins, jumping center; Lucille Fry, running center; Melba Grosse,



Left to Right—Captain Edith Boyd, (forward); Lucille Fry, (running center); Mozelle Hatter, (guard); Lorraine Watson, (forward).



## The 1928 EL RANCHO

guard; Mozelle Hatter, guard; and Leona Boenig, guard. This team was considered to be the all-star team in girls basketball at S. T. S. T. C. They played three games with the Kingsville town team with scores in their favor.

It may be said that more girls participated in basketball at S. T. S. T. C. during the basketball season of 1927-28 than in any other year since the organization of the college.



Left to Right—Rebbie Robbins, (jumping center); Leona Boenig, (guard); Jeanne Dunham, (forward); Melba Grosse, (guard).



## Tennis

---

Melba Grosse and Betsy Hoblit frequent the tennis courts more regularly than any of the other girls.

Last spring Melba won the girls singles and has her name on the loving cup, which is given by Mr. Amos H. Engle to the girl who wins tennis singles two years in succession. Lois Waldie and Betsy Hoblit are furnishing some competition for Melba. Lois entered college after the beginning of the Spring Term this year.

The tennis tournament is held about the middle of May, and there will probably be five or six entries in girls singles, and about the same number of teams in the doubles.



Melba Grosse and Betsy Hoblit.







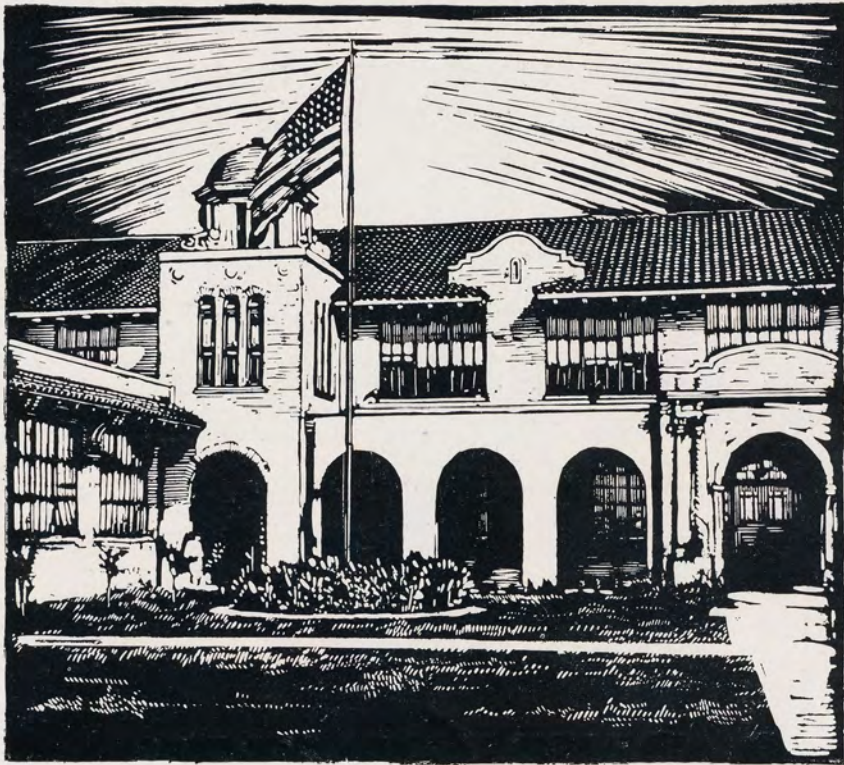
The 1928 EL RANCHO



ADVERTISEMENTS



The 1928 EL RANCHO





---

## The Kleberg County Commercial Club

Invites You to Make

S. T. S. T. C.

Your College

# PERSONALITY +



# 10 YEARS HENCE



# OUR READY-TO-WEAR

Dresses  
Millinery  
Underwear  
Shoes  
Hosiery

We give particular attention to the wants of Girl Students. This is the store where quality comes first. Only high class merchandise in the most approved styles is offered.

## Men's Department

The most complete in Kingsville. Clothes and Furnishings for College Boys our specialty.

You'll Like to Trade at  
This Store



# Raglands

DEPARTMENT STORE

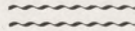
## BRADLEY AND SPALDING SUITS

We are exclusive agents in Kingsville for Bradley Bathing Suits. All Colors Fast, and Fabrics are Pre-Shrunk. They must give Satisfaction.

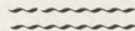
Full Range of Sizes for Men, Women and Children  
All Colors

# The Kingsville Lumber Company

*Kingsville's First and Foremost  
Business Establishment*



Building Materials, Plumbing Supplies, General Hardware, Tin Work, Wall Paper, Paints, Farm Implements and Equipment, Harness, Saddles, Sporting Goods, Electric Refrigeration, Radio Receiving Sets and Supplies, Etc.



Prompt Service

Best Quality

Fair Prices

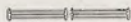
Free Plan Service

Home Building

Easy Terms

Phone 40

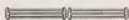
# Pleasure in Merchandising



A great part of the pleasure in merchandising lies in the feeling of a duty well done—of knowing one's patrons are true and loyal.

In such spirit we want to thank the students and faculty of the South Texas State Teachers College for your patronage and to express the wish of serving you even better in the future—increasing our pleasant business relationship.

We appreciate your good will and the confidence it implies in "Your Store" and our service—that's why we say there's pleasure in merchandising.



*Meehan's*  
Chaparral Street at Peoples

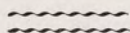
"Your Store"

Corpus Christi : : : : : : : : Texas

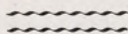


# REAL ESTATE

In the City of Kingsville, Kleberg County, Texas,  
Speaks for itself to the Investor, with  
a very loud noise.



Compare this fast growing city, with its 8,500 population together with much improvements, and the amount of ready cash pay rolls each month, with any city twice the size, and you will picture what will be the coming city of the Gulf Coast Section. Our Company had the foresight for years and have prepared to offer you Real Estate Bargains all over the city with the ONLY CHOICE residence building sites that are being offered for sale. We also have acre tracts close in, and blocks which are being priced right, with very easy terms.



Call On

The Kingsville Land and  
Investment Co.

And Ask for

R. G. (Rudy) Flato

Phone 260

Compliments

D. D. Monroe

and

Texas Company

# Harrel Drug Company

Complete Drug Service

KINGSVILLE : : : TEXAS

Phone 121

Compliments

Kingsville Tailoring  
Company

Dry Cleaners

Phone 123

For Economical Transportation

## Chevrolet

Weller Motor Co.

KINGSVILLE : : : TEXAS

Phone 453

LOUIS S. PIERCE

LADIES' AND GENTS'  
FURNISHINGS

Shoes, Clothing, Hats, Etc.

Courtesy, Quality, Service

KINGSVILLE : : : TEXAS

HIGH SCHOOL  
FILLING STATION

TEXACO GASOLINE AND OIL

We grease your car to make it last  
you longer

Ollie Norris

*The* LAUNDRY /  
*does it best*

KINGSVILLE STEAM LAUNDRY

Phone 5



## L. L. RADFORD'S Jewelry Co.

Diamonds, Watches

Jewelry, Clocks

Eyes Examined      Glasses Fitted

Edison Phonographs      Records

## LOANS

REAL ESTATE  
INVESTMENTS

R. E. YOUNG

Phone 416      309 E. Kleberg Ave.

### ETIQUETTE DEMANDS THE PERSONAL LETTER

When congratulations are in order,  
When you want to write a personal  
letter—

When you write a letter that is YOU,  
use

Montag's writing paper that express-  
es your personality.

MONTAG BROS, INC.  
Atlanta, Ga.

### COMPLETE AUTO SERVICE

## SATERS MOTOR CO.

Phone 42

U. S. Tires and Tubes. Battery Service



## JOKES

Miss Baugh—I am not in a good mood today. I have heard rumors of your bad conduct and, furthermore, my breakfast disagreed with me.

Elizabeth P.—(quietly) I admire its courage.

## LIEBERMAN'S

Also Ladies' Ready-to-Wear  
Millinery

Ladies' Novelty Store



## KINGS INN—QUEEN

Our Business Is to  
ENTERTAIN YOU

We hope that each student of S. T. S. T. C. will carry thru life memories of many happy moments spent as our guest.

J. S. Simmons  
Resident Manager

CASH

CASH

Toute Suite Tailoring Co.  
Phone 111

CASH

CASH

White Rose Confectionery  
WE MAKE OUR OWN CANDY

Drinks

Cigars

## JOKES

Angry Teacher (catching little boy by the ear)—I believe the devil has got hold of you.

Little Boy—I believe he has, too.

## Kingsville Building and Loan Association

Room 19, Flato Bldg

L. C. McROBERTS, Secy.

T. H. LAWRENCE, JR., Agt.

## Kleberg Co. Abstract Co.

All acreage and city lots in  
Kleberg County

Specializing in Kleberg County Land  
Titles for past twelve years

T. A. Simons, Jr.  
Kleberg Bank Bldg. Phone 488  
KINGSVILLE, TEXAS

Stuth Service Station  
Phone 538

Texaco  
Gas and Oil

Firestone  
Tires

---

**Equal to the Occasion**

Mrs. Barkley—What are you doing, young man?

R. Fitch—Just holding your daughter so she won't play the piano and wake the neighbors.

---

**Kingsville Insurance  
Agency**

AN INSURANCE AGENT

Should be selected as carefully as you would select a banker. They both involve money and saving to you.

Do we merit your confidence?

MARCUS PHILLIPS, Mgr.

**ECHOLS CASH STORE**

Dry Goods

Shoes and

Ready-to-Wear

Phone 98      414 E. Kleberg Ave.

KINGSVILLE, TEXAS

---

**JOKES**

Dr. Cousins—You seem disappointed in that parcel post package you have just received.

“Pop” May—Yes, I sent a dollar for a device to keep down coal bills.

Dr. Cousins—What did they send you?

Pop May—A paper weight.

---

**DR. C. A. ROBERTS**

Dentist

KINGSVILLE : : : TEXAS

# KINGTON STUDIO

J. R. KINGTON, Prop.

Official Photographer  
"El Rancho 1928"

"Photographs Live Forever"

---

## JOKES

Bertie—Look here. You've kept me waiting here half an hour in front of this building looking like a fool.

Julian—I'm sorry I kept you waiting; but you are responsible for the looks.

---

The tragedy of the flea is that he knows for certain that all of his children are going to the dogs.

---

Rupert—I just swatted five flies; two males and three females.

Mr. Reed—How can you tell?

Rupert—I got two on the card table and three on the mirror.

## KEEP FIT

Eat Velvet Jersey  
Ice Cream and Butter

DAIRY PRODUCTS CO.

Phone 92



# GOOD WILL

The Good Will of a customer is a valuable asset.

Good Will is acquired from Good Service.

Good Service is obtained through Co-operation.

Co-operation is working in harmony.

This Bank is always in tune.

Robt. J. Kleberg & Company

(Unincorporated)

---

## The Anti-Advertisers

The business management of El Rancho donates this space to those merchants who saw fit not to advertise in our book. Some were justified, some were not. Taking all into consideration, and utterly disregarding any money value that an ad in our year book might have, we believe that it is the duty of every merchant in Kingsville to support South Texas State Teachers College and its functions.

We say that, because we believe that there is not a merchant in Kingsville who has not been at least financially benefitted by our school and its students. Some of the business men, who have benefitted most, have refused us a \$7.00 ad, yet we often hear them say that the College is a great help to Kingsville. We are glad that the majority of them will help us, and we hope that those who do not, will realize that it is not fair for them to let some one else pay for a thing that means money to them all.

Thanks to everyone interested, our book is paid for, and our only object is to make El Rancho of future years a growing success. And that will take co-operation from all.

The Management.

When You Think of Service  
Think of

Highway Motor Sales Co.

Texaco Gasoline and Oils

L. W. Adams, Prop.

Phone 200.

---

### JOKES

Alyne—Some day I will find my ideal of a man who won't take advantage of me.

G. Robertson—Yeah, but the tombstone will probably be too heavy for you to lift.

### JOKES

F. Elmore—At the hop last Saturday night my suspenders broke right out on the floor.

Siddie Grace—Weren't you very embarrassed?

Elmore—Well, not very. Al Pingree had them on.

---

Toggery Tailoring Co.  
CLEANING AND PRESSING

Suits to Measure

Phone 39

Fourth and Kleberg

Headquarters for

Orthophonic Victrolas and

ELECTRICALLY Recorded Records

*Allen*  
FURNITURE Co.  
CORPUS CHRISTI - KINGSVILLE

South Texas' Best Furniture  
and Music Stores

---

### JOKES

Dana—If I were to die, what should you do?

Mildred—Oh, the same as you would, yourself.

Dana—You wretch! I have always suspected it.

\$55,000.00  
THE FRIENDLY BANK

The First National Bank  
of Kingsville

Capital and Surplus



How long did you spend in  
making your picture?

We hope you like it.

**TWELVE POINTS OF ADVICE TO  
THE GIRLS OF THE COLLEGE**

1. Keep away from trackmen; they are usually fast.
2. Never make dates with medical students; they enjoy cutting up too much.
3. The football man is alright; he will tackle anything.
4. You can trust a tankman; he will dive in and do his best.
5. The tennis man is harmless, only he enjoys a good racket.
6. Watch out for the baseball man; he hits and runs.
7. Be careful of a member of the dramatic club; he usually has several good lines.
8. Beware of the LaCrosse man; he might try a bad check.
9. Don't play cards with a civil engineer; he's a bridge specialist.
10. Always let a member of the college band talk about himself; he enjoys blowing his horn.
11. Don't believe all a member of the rifle team tells you; he likes to shoot the bull.

D. Smith—Say,, Prof., I'd like to ask you a question concerning a tragedy.

Mr. Reed—Well, fine, what?

Dutch—What is my grade?

—————  
Ping isn't exactly a magician, but he certainly can make lunch disappear.

# The Jersey as a Teacher

---

A short time ago we were in conversation with a Jersey breeder, one who has made rather an outstanding success of Jersey dairying; that is, he has put his Jersey herd upon a money-yielding basis from a standpoint of production.

Although, probably the greatest thing we learned from this Jerseyman is that while his Jerseys returned a profit and made his family extra money, they were the means of an education for his growing children, giving them a knowledge they could not obtain in any other way, a something that will go down the years of their lives with them as something big, good and great.

It is our belief that there is no part of the education of these children which will mean more to them, bring them greater comfort, carrying them through the years with so steadfast and staunch mind to do the right thing, and treat all their problems with the thought and carefulness which will insure them success of the most noble kind, as will this Jersey education years hence. When they have, perhaps, wandered far from home in the pursuit of their chosen professions, to become lawyers, manufacturers, or of any other profession, they will recall their days of childhood and youth and the simple pleasures and the love which they feel for their Jersey charges now. These will be numbered among their most cherished memories.

Indeed, there is an education for the children in working with a herd of Jerseys. The love for dumb animals comes with a close association and work with their Jerseys. It teaches them to be considerate of creatures, and therefore considerate of mankind. It teaches that care and kindness and gentleness are prime requisites which add character to those who practice them, and cheer and warmth to those with whom they may come in contact.

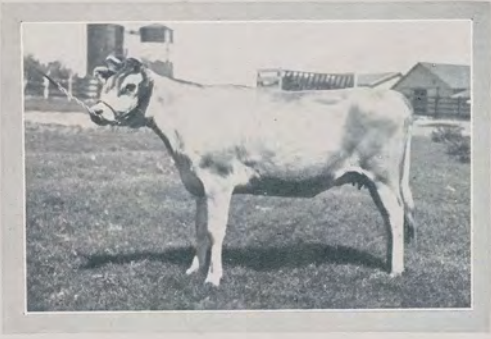
---

## Santa Gertrudis Jersey Farm

Kingsville : : : : Texas

Robt. J. Kleberg,  
Prop.

Oscar Anderson,  
Supt.



FIRST STATE BANK  
of Kingsville

Save and Have  
We appreciate your business

KINGSVILLE  
FURNITURE COMPANY

READ THE ADS.

DR. J. V. CHANDLER

Dentist

KINGSVILLE : : : TEXAS

It is the duty  
Of every student  
To support those  
Who support them

T. M. BROOKSHIRE  
CASH GROCERY

F. H. Lynch, Prop.



*KINGSVILLE PUBLISHING COMPANY*  
*KINGSVILLE, TEXAS*





## The 1928 EL RANCHO



Left to Right—Jesse Smith, (short); Weldon Smith, (outfield); Maurice McCracken, (catcher).

innings, at the close of which the game was called on account of wet grounds. Warner pitched a neat five innings for the Hogs.

The Javelinas next defeated the strong Bishop nine for their sixth straight win, 10 to 2. It was nothing but hit, run and score for the Hogs, while the Bishop infielders and outfielders got a nice work-out.

Robstown Hi came down for their second defeat by the Hogs and were not disappointed. The final score was Robstown 2, Javelinas 11.

After winning seven games in a row, the Javelinas dropped the last game of the season to the powerful MoPac Pioneers, 6 to 4. The game was featured by Captain-elect Warner's hitting the home run that is regarded as the longest drive in the history of the park.

