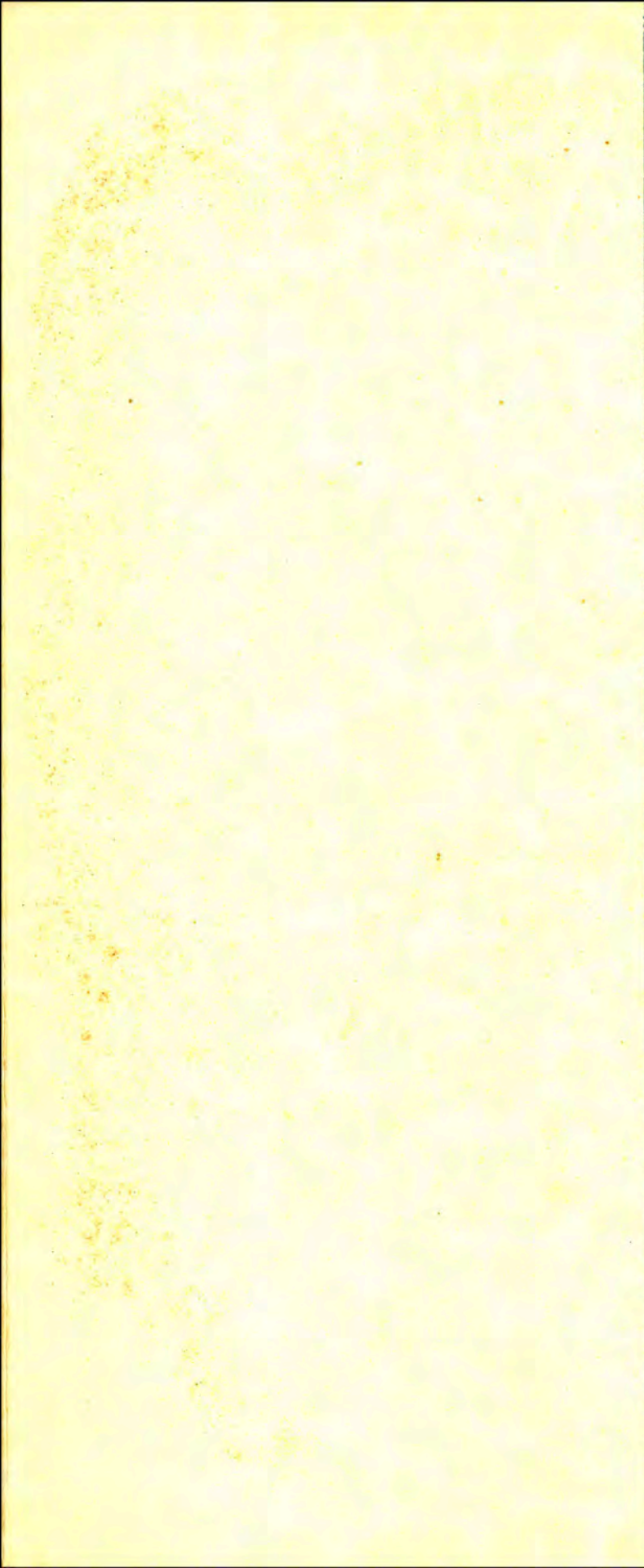




EL RANCHO '34

EX LIBRIS



THE 1934 EL RANCHO

PUBLISHED BY THE
STUDENTS OF THE
TEXAS COLLEGE OF
ARTS & INDUSTRIES

KINGSVILLE
TEXAS



FOREWORD

IT IS THE SINCERE HOPE OF THE STAFF THAT THE EL RANCHO 1934 WILL PRESERVE FOR YOU A GENUINE RECORD OF YOUR ACTIVITIES IN THE CLASSROOM AND ON THE CAMPUS, AND A TRUE REFLECTION OF THE TEXAS COLLEGE OF ARTS AND INDUSTRIES AS YOU KNOW IT. MAY YOU FIND IN IT IN THE YEARS TO COME A PLEASANT REMINDER OF THE HAPPY ASSOCIATIONS MADE DURING YOUR YEARS IN COLLEGE.





DEDICATION

TO

E. W. SEALE

In sincere appreciation of his spirit of friendliness, his ease of bearing, and his admirable personality.

In appreciation of his ability as a business man, his definite plan for the educational, agricultural, and civic development of South Texas, and his efficiency as College President.

PHOTOGRAPHY

by

KINGTON STUDIO
Kingsville, Texas

ENGRAVING

by

SOUTHWESTERN ENGRAVING COMPANY
Fort Worth, Texas

PRINTING

by

KINGSVILLE PUBLISHING COMPANY
Kingsville, Texas

The Shellwalk



Photo by McGregor



Photo by McGregor

The East Entrance

The West Tower



Photo by McGregor



Photo by McGregor

The President's Home

The Main Building

Photo by McGregor

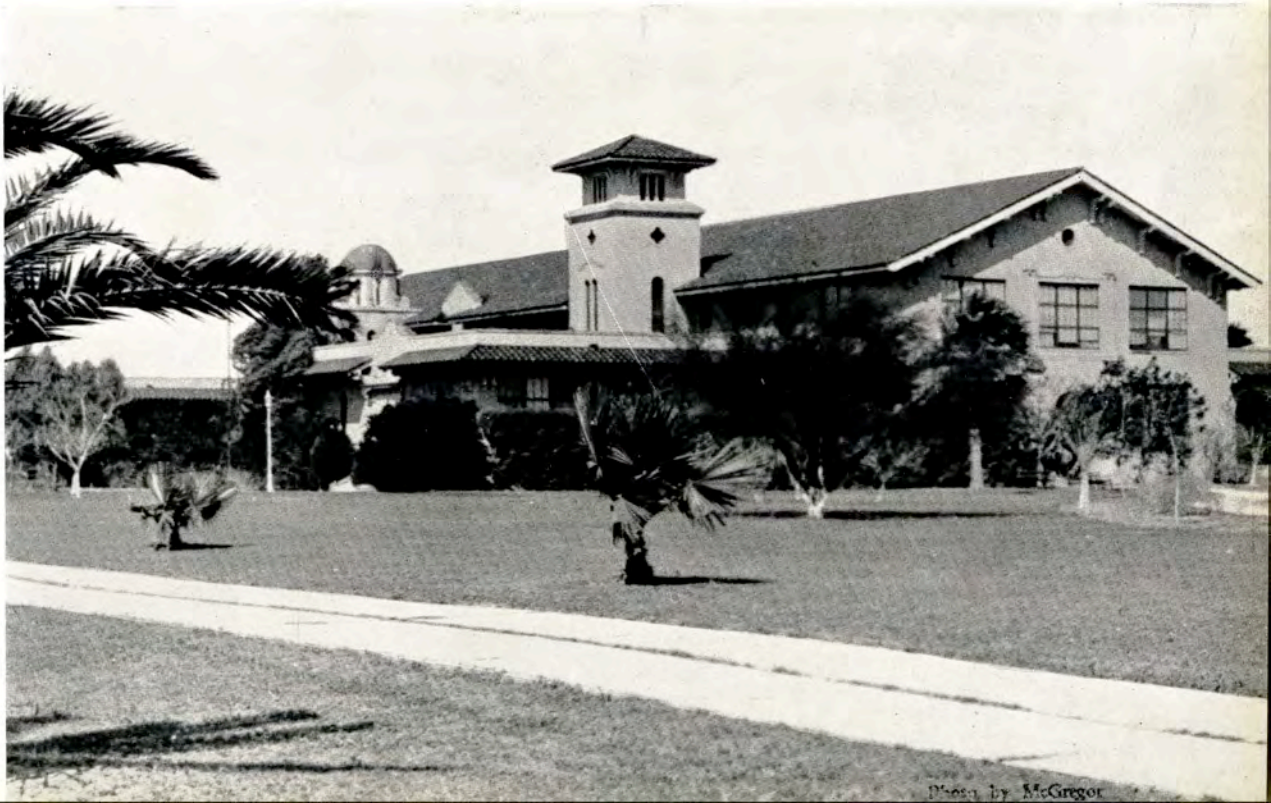


Photo by McGregor



Photo by McGregor

The Forum

EXECUTIVES



*To The Annual Staff
of El Rancho 1934:*

I extend to the students of El Rancho Staff of 1934 my heartiest congratulations for your determination to sponsor this worthy project. I am proud of the devotion, industry, and self-denial that you have exhibited because of your love for the institution that is soon to count you among its alumni. To bring this project to the point of success has required that you exhibit the high qualities which a college is designed to train. As members of the student body your qualities of mind and character represent a cross-section of our student body. I am therefore proud of a student body that is typified in the personnel of El Rancho Staff of 1934.

High purpose, unselfish devotion to that purpose, and persistence in pursuing a project to a successful end are the qualities that constitute great citizenship. After viewing your fine display of these splendid qualities, I feel that the work done at A. and I. College in behalf of the State of Texas has not been in vain.

E. W. SEALE.

BOARD OF DIRECTORS

R. L. BOBBITT, *President*
Laredo

J. D. RUCKMAN
Karnes City

GIVENS A. PARR
Alice

R. C. ECKHARDT, *Secretary*
Kingsville

MRS. LORINE JONES SPOONTS
Corpus Christi

JAMES R. DOUGHERTY
Beeville

MRS. W. L. STONER, *Vice-President*
Victoria

S. L. GILL
Raymondville

CLAUDE POLLARD
Austin



THE FACULTY



L. F. CONNELL, M. A.

ECONOMICS

*Head of the Department
Associate Dean of the
College*

JOHN L. NIERMAN, PH. D.

CHEMISTRY

*Head of the Department
Dean of the College*

J. E. CONNER, M. A.

HISTORY

*Head of the Department
Dean of Men*

LILA BAUGH, M. ED.

EDUCATION

Dean of Women

EDITH COUSINS, M. A.

SOCIOLOGY

Associate Dean of Women

GEORGE W. McCULLEY, M. B. A.

BUSINESS ADMINISTRATION

Registrar of the College

LOYCE ADAMS, B. B. A

Assistant Registrar

R. E. MAY

Business Manager

ANN L. KIRVEN, B. A.

Librarian

MRS. GEORGIA W. BERGERON, M. A.

EDUCATION

*Director of Student Teaching
in the High School*

THE FACULTY



FRANCES ALEXANDER, M. A.
ENGLISH

GRACE BAILEY, B. S.
EDUCATION

S. W. BASS, M. A.
PHYSICS
Head of the Department

J. D. BRAMLETTE, M. A.
EDUCATION
*Superintendent of the
Training School*

MAMIE E. BROWN, M. A.
EDUCATION

J. DEWITT DAVIS, PH. D.
EDUCATION
Head of the Department

RUSSELL J. COOK, M. S.
AGRICULTURE
Head of the Department

J. B. CORNS, M. S.
HORTICULTURE

MEDDIE I. BICE, M. S.
HOME ECONOMICS

VIRGINIA CAMPBELL, B. S.
PHYSICAL EDUCATION

THE FACULTY



C. K. FRASER, M. S.
ANIMAL HUSBANDRY

DOSHA DOWDY, B. M.
MUSIC

C. O. EGNER, PH. D.
BUSINESS ADMINISTRATION

MAY H. DICKENS, M. A.
HISTORY

MEDFORD EVANS, PH. D.
ENGLISH

W. A. FRANCIS, M. A.
ENGLISH
Head of the Department

HELEN MAR HUNNICUTT, M. A.
SPANISH

DWIGHT N. GARRISON, M. A.
CHEMISTRY

CLARA W. GLASS, M. A.
BUSINESS ADMINISTRATION

SARAH LOIS GRIME, M. A.
GEOGRAPHY

THE FACULTY

VILA B. HUNT, M. A.
EDUCATION

PAULINE JESTER, M. A.
ENGLISH

MRS. RALEIGH COLSTON, B. M.
MUSIC

C. E. JEWETT, B. B. A.
PHYSICAL EDUCATION

J. R. MANNING, M. A.
BUSINESS ADMINISTRATION
Head of the Department

A. Y. McCALLUM B. B. A.
PHYSICAL EDUCATION
Head of the Department

LEORA MCNESS, M. A.
ART

R. L. PEURIFOY, M. A.
ENGINEERING
Head of the Department

MILDRED PECAUT, B. A.
SPEECH ARTS

MARGARET NEELY, M. S.
HOME ECONOMICS



LANTANA LADIES



Introducing

·

MISS HAZEL HAIRE
QUEEN

·

MISS LENA DAVIS

·

MISS JEAN SINCLAIR

MISS HAZEL HAIRE

QUEEN

FROM HARLINGEN; LIKES ENGINEER-
ING STUDENTS AND DANCES. FIVE
FEET, TWO; BLUE EYES; AUBURN HAIR.
FAVORITE MOVIE ACTOR: WARNER
BAXTER.





WESTRUP

MISS LENA DAVIS

FROM BERCLAIR; LIKES FOOTBALL
HEROES AND HEROICS; FIVE FEET,
FOUR; BLACK HAIR, BROWN EYES;
FAVORITE ORCHESTRA, GUY
LOMBARDO.





WESTRUP
COPPLE & BENTLEY

MISS JEAN SINCLAIR

FROM KINGSVILLE; LIKES TENNIS
AND SWIMMING. FIVE FEET, FIVE;
BROWN HAIR; BROWN EYES.
FAVORITE COMEDIAN: JOE PENNER.





WESTRUP

CLASSES



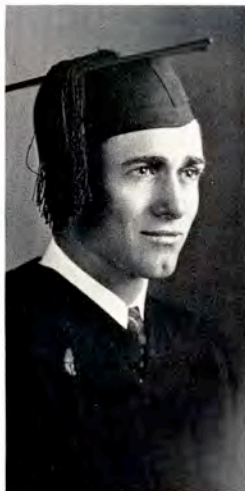
SENIORS



FRANK ALLEN
McAllen

B. S.
AGRICULTURE
AUGUST

Aggie Club '31, '32, '33,
'34.
T. Association '32, '33,
'34.
F. F. A. Club '34.



EUGENIA ADAMS
Kingsville

B. A.
ENGLISH
AUGUST

Alpha Chi '34.
English Club '32, '33,
'34 (Secretary '34).
W. A. A. '32, '33, '34,
(President '34).
Racquet Club '32, '33,
'34 (President '34).
Y. W. A. '34
(President '34).
Pep Squad '33, '34.
B. S. U. '32, '33, '34.
Studio Club '32, '33, '34.

FRANK M. BARNETT
Kingsville

B. S.
ANIMAL HUSBANDRY
JUNE

Male Chorus '31, '32,
'33, '34, (Vice-Pres-
ident '32, '33).
(President '34).
A Cappella Choir '34.
Aggie Club '32, '33, '34.
Polo '34.
Dairy Judging Team
'33, '34.
Livestock Judging
Team, '33, '34.



KAY BALLARD
Kingsville

B. S.
CHEMISTRY
JUNE

Engineering Club '31,
'32, '33, '34.
(President '34).
El Rancho Staff '34.
President Senior Class
'34.

WINIFRED GRAHAM
BEALL
Alice

B. A.
SPANISH
AUGUST

Alpha Chi '34.
South Texan Staff '34.
English Club '34.
Spanish Club '33, '34,
(Reporter '34).



LOIS BATCHELDER
Kingsville

B. S.
EDUCATION
JUNE

English Club '34.
Alpha Chi '32, '34.

BILL BLAIR
McAllen

B. B. A.
AUGUST

Student Council '31, '32,
'33, '34.
President Freshman
Class '31.
Footlight Club '31, '32,
'34.
Aggie Club '32.
B. A. Club '33, '34.
Yell Leader '31, Head
Yell Leader '32, '33,
'34.
Male Chorus '31, '33,
'34.
A Cappella Choir '33,
'34.
Lambda Chi '33, '34.



MARGARET BLACK
Bishop

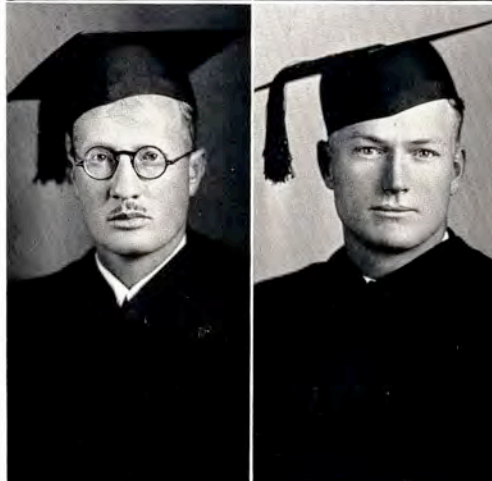
B. B. A.
JUNE

Alpha Chi '33, '34.
B. A. Club '33, '34.
Pep Squad '33.

LLOYD BOGUSKIE
Kingsville

B. S.
EDUCATION-BIOLOGY
JUNE

Alpha Chi '34
English Club '34
South Texan Staff '31.
El Rancho Staff '32.
Manager Varsity
Tennis '31, '32.
Biology Club '31, '32.



CARL BROWN
Kingsville

B. S.
HISTORY
AUGUST

Alpha Chi '34.
History Club '32, '33,
'34.
Pre-Law Club '32, '33.
Male Chorus '33, '34.

See

ELINOR CHAPMAN
Corpus Christi

B. A.
ECONOMICS
AUGUST

Alpha Sigma '33, '34
(Treasurer '33,
Secretary-Treas.
'34).



MRS. EVERETT
BROWN
Bishop

B. S.
EDUCATION
AUGUST

Alpha Chi '34.

BONNIE LEE CLARK

Kingsville

B. A.
GEOGRAPHY
AUGUST

History Club '33.
English Club '33, '34.
B. S. U. '33.



VERN CONNER

Farnsworth

B. S.
AGRICULTURE
JUNE

Aggie Club '33, '34,
(President '34).
F. F. A. Club '34.
Alpha Tau Alpha '34.
Lambda Chi '34.
Livestock Judging
Team '34.
Dairy Judging Team
'34.

FRED CONNELL

Kingsville

B. A.
PHYSICS
JUNE

El Rancho,
(Editor-in-chief '34,
Junior Class Editor
'33).

Press Club '33, '34,
(Treasurer
Summer '33,
Vice-President '34).

Alpha Chi, '33, '34.
Student Council '34.
History Club '31.



LOUISE CLARK

Kingsville

B. A.
ENGLISH
AUGUST

Alpha Chi '31, '32, '33.
English Club '30, '31.
Classical Club '30.

ALFRED W.
DAVISSON, JR.

Corpus Christi

B. S.
PHYSICS
JUNE

Engineers Club
(Reporter '34).



ELIDA CUELLAR

Corpus Christi

B. A.
ENGLISH
JUNE

Amado Nervo Spanish
Club
(Secretary '34).

YCC

DORA DIETZ
Kingsville

B. A.
ENGLISH
JUNE

English Club '33, '34.
Pep Squad '32, '33.
Glori-us '32.
Beta Gamma '32, '33,
'34.
Alpha Chi '34.
Press Club '32.



ANNIE MARGARET
DRABEK
Kingsville

B. B. A.
JUNE

English Club '32.
B. A. Club '32, '33, '34.
Alpha Chi '34.
W. A. A. '32.

MRS. CLEONE
EMERSON
Kingsville

B. A.
HISTORY
AUGUST



CLAYTON L.
EPPERSON
Kingsville

B. S.
EDUCATION-HISTORY
JUNE

History Club '34.

ELDRED W. FOSTER
Kingsville

B. A.
SPANISH
JUNE

Engineering Club '32,
'33.



GERALD FRY
Marble Falls

B. S.
AGRICULTURE
JUNE

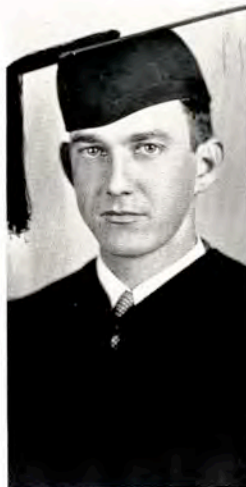
T. Association '31, '32,
'33.
Aggie Club '31, '32, '33,
(President '33).
F. F. A. Club
(President '33).
Male Chorus '31, '32, '33.
A Cappella Choir '33.
Stock Judging Team
'31, '32.
Alpha Tau Alpha '34.
Lambda Chi '32, '33.
Alpha Chi '33, '34.

JOHN GILLETTE

Cadiz

B. A.
ECONOMICS
JUNE

Track '31.
T. Association '32, '33,
'34.
Vice-President Student
Body '34.
Alpha Chi '33, '34,
(Vice-President
Summer '33,
President '34).
Lambda Chi '33, '34.
(Reporter '34).
Pre-Law Club '33.
Reporter Senior Class
'34.
El Rancho Staff '34.
South Texan Staff '34.



EUNA GARDNER

Odem

B. S.
GEOGRAPHY
AUGUST

History Club '28.
English Club '33.

MARK O. GLASGOW

Bloomington

B. A.
CHEMISTRY
AUGUST

Alpha Chi '34.



DORIS GWIN

Kingsville

B. B. A.
AUGUST

Pep Squad '31, '32.
Footlight Club '31, '34.
(Treasurer '31).
Delta Theta '31, '32, '33,
'34.
(Vice-President
'34).
South Texan Staff '32.
Glee Club '32.
B. A. Club '33, '34.

EARL G. HARDT

Kingsville

B. A.
HISTORY
AUGUST

History Club '32, '33,
'34.
English Club '34.



HAZEL V. HAIRE

Harlingen

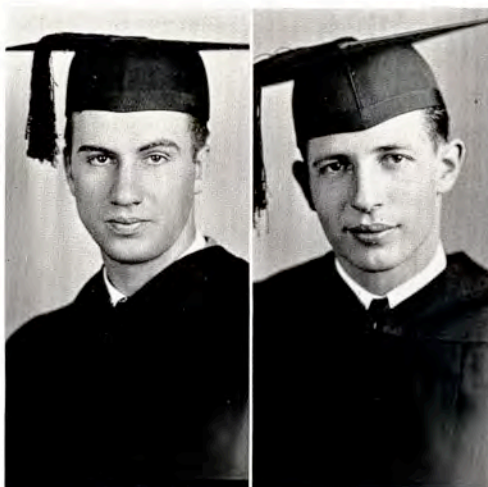
B. S.
EDUCATION
JUNE

History Club '33.
English Club Vice-
President '34.
Beta Gamma '34.
Pep Squad '34.
Engineer Club Sweet-
heart '33.
Lantana Queen '34.

JOHN W. HARRIS
Ouachita, Ark.

B. S.
EDUCATION-HISTORY
AUGUST

Alpha Chi '34.
History Club '33, '34,
(Vice-President
'33).
Footlight Club '33, '34.
Lambda Chi Vice-Presi-
dent '34.
T. Association '33, '34,
(Reporter '34).
Basketball '33, '34.
Football Manager '34.
President Student
Council '34.
El Rancho Staff '34.
President B. S. U. '34.



E. H. "SKEETS" HAUN
Kingsville

B. B. A.
JUNE

President Sophomore
Class '32.
Pre-Law Club '32, '33,
(President '32,
Vice-President '33).
Footlight Club '32,
(Treasurer '32).
B. A. Club '32, '33, '34,
(President '34).
President Student
Council '33.
Alpha Chi '33, '34.
Aggie Club '34.

etc

GEORGE W. HARRIS,
JR.
Kingsville

B. B. A.
AUGUST

Male Chorus '32, '33, '34.
B. A. Club '33, '34.
History Club '33.



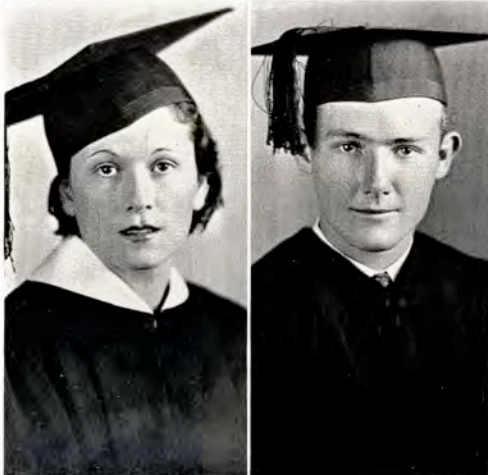
BERNICE HOLCHAK
Robstown

B. S.
HISTORY
AUGUST

History Club '33.
Alpha Sigma '31, '32,
'33.
W. A. A. '32.

VIOLA MEDFORD
HUDDLESTON
Corpus Christi

B. B. A.
AUGUST



ODIE JENKINS
Pleasanton

B. S.
MATHEMATICS
JUNE

Engineering Club '31,
'32, '33, '34.
(President '34).
Alpha Chi '33, '34.

JOHN W. KELLAM, JR.
Robstown

B. S.
MATHEMATICS
AUGUST

Engineering Club '30,
'31, '32, '33.
(Secretary - Treas-
urer '33.)
Tennis '32, '33.
Male Chorus '31, '32,
'33, '34.
A Cappella Choir '34.
T. Association '33, '34.



MALDA HELEN
LACKLAND
Harlingen

B. S.
EDUCATION
JUNE

J. B. KENNEY
Poteet

B. S.
CHEMISTRY
JUNE

Engineering Club '31,
'32, '33, '34.
(Secretary - Treas-
urer '32),
Vice-President,
'33).



CLYDE I. KRAMME
Kingsville

B. S.
EDUCATION-
MATHEMATICS
JUNE

Alpha Chi '33, '34.
Footlight Club '33, '34.

FAYE LILLY
Devine

B. S.
EDUCATION
AUGUST

Home Economics Club,
'32, '33, '34.
Beta Gamma '34.
B. S. U. '33, '34.
Pep Squad '31, '32, '33,
'34.



MELBA MAXINE
LINDBERG
Edna

B. A.
SPANISH
JUNE

W. A. A. '30, '34.
Spanish Club '34.
English Club '30, '34.
History Club '30.
Pep Squad '34.
Vice-President Sopho-
more Class Summer
'30.

EVELYN LOECKLE
Kingsville

B. B. A.
JUNE
B. A. Club '31, '32, '33,
'34.
History Club '33.
Alpha Chi '33, '34,
(Corresponding Sec-
retary '33,
Secretary, Summer
'33,
Vice-President '34).



C. C. McCALL, JR.
Wichita Falls

B. B. A.
JUNE
Engineering Club '30,
'31, '32.
Press Club '32, '33, '34,
President Summers
'32, '33,
President '34).
President Junior Class
'33.
Vice-President Senior
Class '34.
Business Manager
South Texan '33,
'34.

HOKE MCKIM
Bishop

B. S.
AGRICULTURE
AUGUST
Aggie Club '34.
F. F. A. President '34.
Alpha Tau Alpha '34.



MAMYE
MONTGOMERY
Kingsville
B. A.
ENGLISH
AUGUST

SARAH KATHERINE
MIKEL
Kingsville

B. S.
EDUCATION-
HISTORY
JUNE
Pep Squad '31, '32, '33.
History Club '31, '32.
English Club '32.
Glori-us '32.
Beta Gamma '33, '34,
(President, Sum-
mer '33,
Reporter '34).



GEO. M. MAYFIELD
El Campo
B. S.
MATHEMATICS
AUGUST
Engineering Club '32,
'33, '34.

22

MARGARET NANCE
Kingsville

B. A.
ENGLISH
JUNE

Delta Theta '32, '33, '34,
(President '34).
Press Club '32, '33, '34.
Art League '33.
Secretary-Treasurer
Senior Class '34.
Footlight Club '32, '33.
South Texan Staff '32,
'33, '34.



DON MORRISON
Corpus Christi

B. S.
CHEMISTRY
JUNE

Engineering Club '34.

T. W. MOON
Santa Rosa

B. S.
MATHEMATICS
AUGUST

Aggie Club '31, '32, '33,
'34.
Lambda Chi '32, '33, '34.
English Club '33, '34.
Football Reserve '31.



H. B. NEVILLES
Kingsville

B. S.
EDUCATION-
ECONOMICS
JUNE

Lambda Chi '33, '34.
Aggie Club '33, '34.

23

JOSEPH POLLEY PAINE
Markham

B. S.
ART
JUNE

El Rancho Staff '32, '33.
(Associate Art
Editor '32.
Art Editor '33.)
Art League '31, '32, '33.
(Treasurer '32,
President '33).
History Club Treasurer
'32.



JOAN PURDON
Beaumont

B. S.
BIOLOGY
JUNE

English Club '33.
Press Club '33, '34,
(Secretary-Treas-
urer, '34).
El Rancho '33, '34
(Business Manager
'34).
Pep Squad '33.

MAYME POWERS
Corpus Christi

B. S.
GEOGRAPHY
AUGUST

W. A. A. '31, '32, '33, '34
Home Economics Club
'31, '32.
Classical Club '33.
English Club '34.



OCTAVIO ELI PEREZ
Kingsville

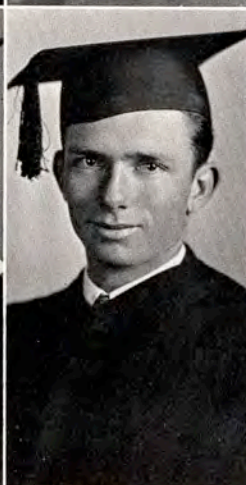
B. A.
SPANISH
JUNE

Spanish Club '33, '34.

ALICE B. PETTY
Corpus Christi

B. S.
EDUCATION-
GEOGRAPHY
AUGUST

English Club '32, '33,
'34.
Art League '32, '33.
Alpha Chi '34.



NOEL E. REED
Vanderbilt

B. A.
HISTORY
AUGUST

History Club '31, '32,
'33, '34.
Footlight Club '33.
Press Club '34.
English Club '34.
Pre-Law Club '31,
(Vice-President
'31.)

FRANKLIN REED
Vanderbilt

B. B. A.
JUNE

B. A. Club '32, '33, '34.
Press Club '33, '34.
Alpha Chi '33, '34.
South Texan '33, '34,
(Associate Editor
'33.
Editor-in-chief '34).
Student Council '34.
B. S. U. '33, '34.



JEWEL REAMS
Corpus Christi

B. B. A.
AUGUST

B. A. Club '34.
History Club '34.

MRS. IDELLA L. REED
Kingsville

B. A.
BIOLOGY
JUNE

Orchestra '31, '32, '33,
'34.
String Quartet, '31, '32,
'33, '34.
Pre-Med Club '32.
Alpha Chi, '33.



BILLIE MARIE
ROBBINS
Bishop
B. A.
ENGLISH
AUGUST

English Club '34.
Footlight Club '31, '32,
'33.
Beta Gamma '32, '33,
'34.
(President '34).
Girls Glee Club '31, '32.
Pep Squad '32, '33.

JOHN ROGERS
Kyote

B. B. A.
JUNE

Basketball '31, '32, '33,
'34.
(Captain '34).
Lambda Chi, '32, '33
'34.
T. Association '31, '32,
'33, '34.
(Secretary-Treas-
urer, '33).
Football '32, '33.
B. A. Club '34,
(Vice-President,
'34).



MRS. SUE LEE
ROSAMOND
Driscoll

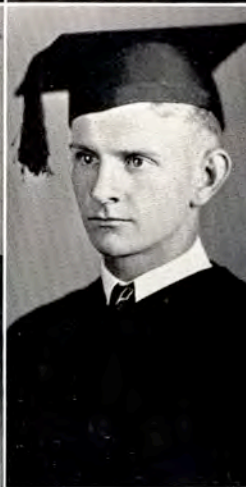
B. S.
HISTORY
JUNE

Alpha Chi '34.

CLIFFORD SADLER
Bigfoot

B. S.
AGRICULTURE
JUNE

Football '30, '32, '33.
Basketball '31, '32, '33,
'34.
T. Association '31, '32,
'33, '34.
Tennis '33, '34.
Aggie Club '31, '32, '33,
'34.
F. F. A., '34,
(Vice-President,
'34).
Alpha Chi '34.
Lambda Chi, '32, '33,
'34.
Male Chorus '34.
Alpha Tau Alpha, '34,
(Sec'y-Treas. '34).



ROBERT C. RUMBLE
Edinburg

B. S.
PHYSICS
JUNE

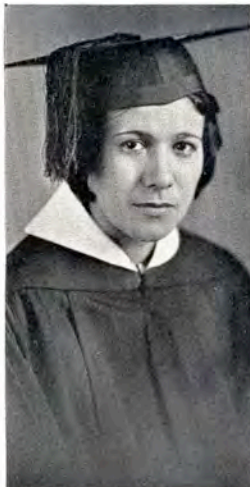
Engineering Club '34,
(Secretary-Treas-
urer '34).
Alpha Chi '34.

CARMEN SANCHEZ

Harlingen

B. A.
SPANISH
JUNE

Spanish Club '34,
(Vice-President '34).



JEAN LOUISE

SINCLAIR

Kingsville

B. S.
EDUCATION-BIOLOGY
AUGUST

Delta Sigma Mu '33,
Delta Theta '31, '32, '33,
'34 (Treasurer '33).
Kappa Omicron Phi '33,
'34 (Sec'y-Treas. '34).
Footlight Club '31, '32,
'33, '34 (Sec'y '33).
Inter-class Athletic
Council '33, (Sec'y '34).
Racquet Club '32 '33, '34
(Secretary '34).
Girls Glee Club '31, '32,
'33, '34.
A Cappella Choir '33, '34.
W. A. A. '31, '32, '33,
(Secretary '34).
El Rancho Staff '34.
Pep Squad '33, '34.
Poetry Club '33.
H. E. Club '31, '32.

Dec

LOUIS SHAPER

Goliad

B. B. A.
AUGUST

B. A. Club '34.



ALICE SMITH

Kingsville

B. A.
ENGLISH
AUGUST

Footlight Club '30, '31.
W. A. A. '30, '31,
(President '31).
Press Club '31.
El Rancho '31,
(Associate Editor
'31).
Delta Theta '30, '31.
Alpha Chi '34.

MRS. W. B. STARNES

Kingsville

B. S.
GEOGRAPHY
AUGUST

English Club '34.
History Club '34.



T. W. STARKEY

La Feria

B. A.
SPANISH
AUGUST

Alpha Chi '34.

Dec
?

BEATRICE STOKES
Alice

B. A.
HISTORY
JUNE

History Club '32, '33,
'34,
(Secretary,
Summer '33,
Vice-President '34).
Classical Club '31.
B. A. Club '33.
Alpha Chi '34,
(Secretary '34).



MARION TOWNSEND
Kingsville

B. B. A.
JUNE

B. A. Club '33, '34.

LOUISE UNDERWOOD
Kingsville

B. A.
ENGLISH
JUNE

English Club '32, '33,
'34.
(Secretary-Treasurer
Summer '32,
'33,
President '34).
History Club '33, '34,
(Secretary '34).
Footlight Club '33, '34.
Alpha Chi, '34,
(Treasurer '34).
Pep Squad '33, '34.
Secretary-Treasurer,
Sophomore Class,
Summer '32.



O. B. WARNER
Runge

B. A.
SPANISH
AUGUST

Spanish Club '34.

DEC
?

ROSE JANET
WESTLAKE
Kingsville

B. S.
HISTORY
JUNE

A Cappella Choir '34.
Girls Glee Club '33, '34.
History Club '34.
B. A. Club '32, '33.
Footlight Club '31, '32,
'33.



WANN
WOOLDRIDGE
Kingsville

B. A.
ENGLISH
JUNE

B. S. U. '33.
History Club '33.
English Club '34.
Alpha Chi '34.

JUNIORS



EVELYN ADAMS
Kingsville



ABELINO E. AGUIRRE
Allende N. Leon,
Mexico

RAMONA BALDRIDGE
Harlingen



KENITH BALLARD
Kingsville

MARY GRACE BARNETT
Kingsville



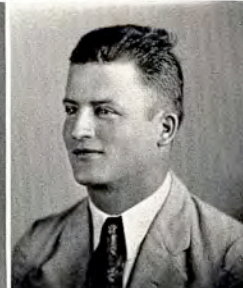
GLADYS LOU BELL
Asherton

HAROLD O. BROWN
Kingsville



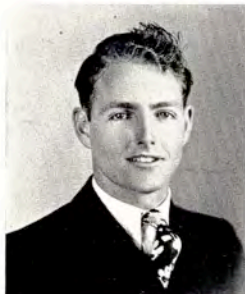
LUCILLE BROWNING
Bishop

HELEN BUNDICK
Bloomington



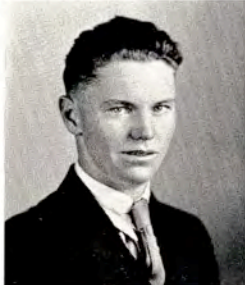
JARO BLAHUTA
Robstown

ARNETTE CLAMPITT, JR.
Kingsville



DICK BURKE
Beeville

A. B. CROSS, JR.
Bishop



DOROTHY E. DAVIS
Kingsville

JOHN MARK DIXON
Bigfoot



IRVING DIETZ, JR.
Corpus Christi

ANNABEL ELLIS
Kingsville



JOHN D. FINNEGAN, JR.
Kingsville

AURORA GARCIA
Kingsville



JANET ELIZABETH
FOSTER
Kingsville

MARGARET GLADNEY
Kingsville



TILGHMAN (RED)
HARBIN
Corpus Christi



MARGARET HOUSE
Kingsville



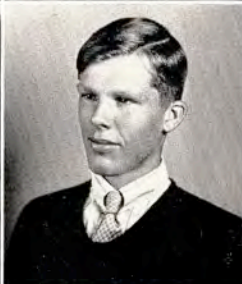
ROBERT MARTIN
HODGKISS
Wichita Falls



NANCY KENNY
Corpus Christi



ROBERT BOYD LADD
Driscoll



HELEN LOUISE LUNDELL
Kingsville



F. DREW MAYFIELD
El Campo



OSCAR NEDBALEK
Skidmore



LUDMILLA MARTINKA
Sinton



HORACE OWINGS
Devine



G. C. PARRISH
Kingsville



MAYME PFLUGER
Bishop



K. S. PEURIFOY
Dallas



JAMES C. PORTER
Cason



MRS. WALTER
RAWLINGS
Corpus Christi



BERNICE ROLF
Kingsville



HUGH PORTER, JR.
Kingsville



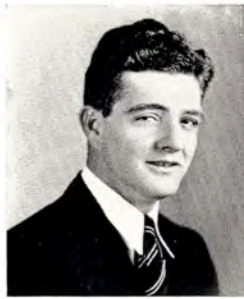
ANNIE ROSS
Agua Dulce



ELIZABETH SALYER
Kingsville

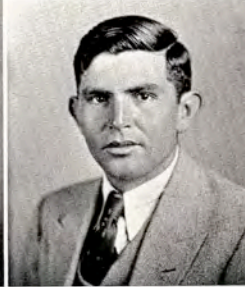


BUDDY SHELTON
Refugio



MARY SALYER
Kingsville

MARY MARGARET
SINCLAIR
Kingsville



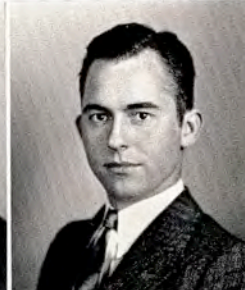
J. E. TURNER
Kingsville

JOHN HOMER SPLAWN,
JR.
Greenwood



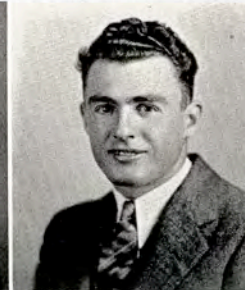
ELIZABETH SORENSON
Corpus Christi

GUSTAVO VINA
Edinburg



HERNDON VAUGHN
Kingsville

GUS WHITE
Kingsville



ELROY WEIKEL
Corpus Christi

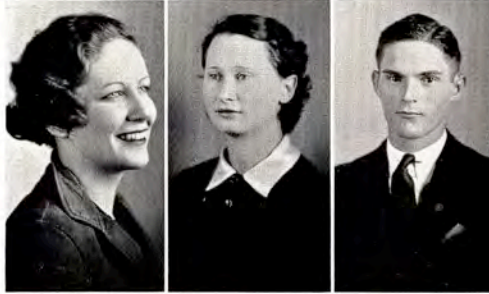
SOPHOMORES



HENDERY ALLISON
Kingsville

BLANCA ELISA BARRERA
Laredo

BEATRIX BARRERA
Laredo



HELEN BLAIR
McAllen

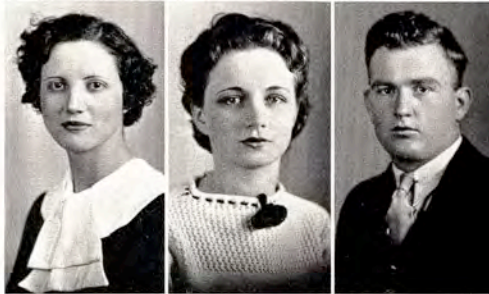
LILLIE BECK
Woodsboro

RAYMOND BUNDICK
Bloomington

OWEN CALDCLEUGH
Taylor

RENA CAMPBELL
Taft

JACK CATES
Robstown



MRS. LUCILLE CATES
Robstown

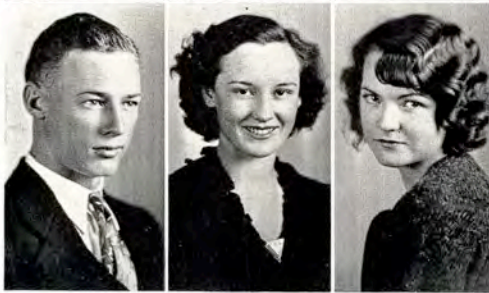
MARGARET CUBAGE
Corpus Christi

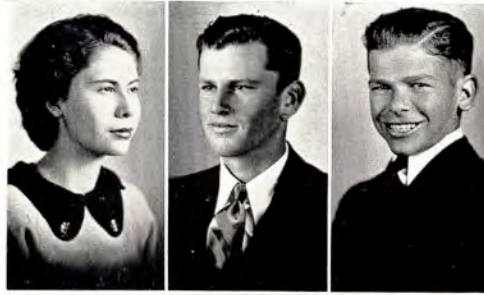
TYRUS COX
Mexia

CHARLES CUMBERLAND
Kingsville

SELMA CRAWFORD
Kingsville

GRACE CHAMBERLAIN
Falfurrias





ALVICE DUNCAN
Kingsville

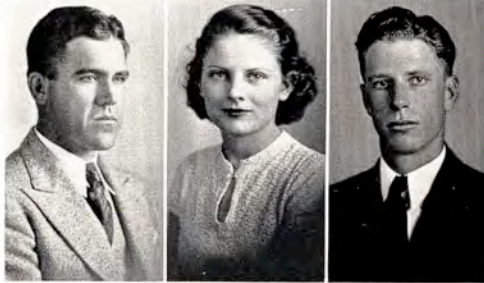
THOMAS J. DENSON
Robstown

JAMES DOUGHTY
Robstown

DUDLEY P. FRY
Driscoll

ROWENA DUNLAP
Chapman Ranch

ANDREW EDWARDS
Oakville



MRS. C. P. GARRISON
Hereford

HUBERT GALLOWAY
Robstown

LUPITA GONZALEZ
Kingsville

ANDREW LEE
HABERMACHER
Hereford

BERNICE HENKHAUS
Woodsboro

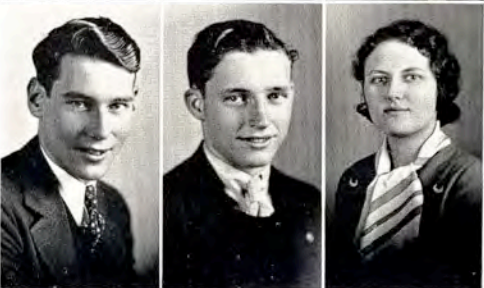
LEONARD HALL
Kingsville



JOE HUCKABAY
Bonita

GEORGE HINTGEN
Kingsville

DORA DELL HENNINGS
Long Mott



NOE JIMENEZ
San Diego

DOROTHY JOHNSON
Floresville

HARRY LINNEY
Refugio



JOHNNY McNABB
Kingsville

JERRY MARTIN
Robstown

RALPH McLELLAND
Harlingen



MARIE MILLER
Bishop

DANIEL NEDBALEK
Skidmore

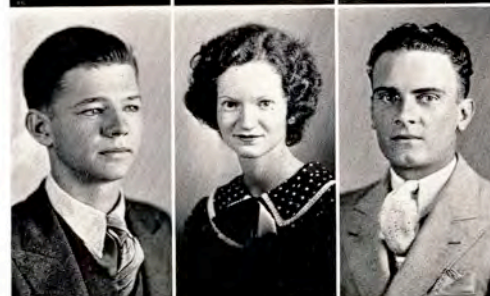
JERRY BLANTON
MAXWELL
Corpus Christi



KERMIT NATHO
Orange Grove

ELLA MAE MALONE
Beeville

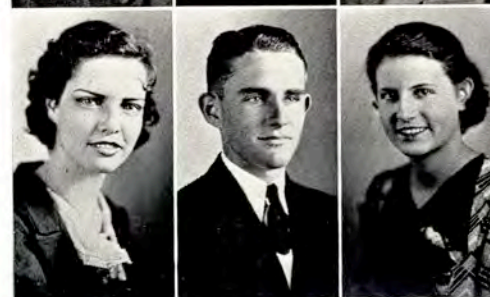
MACK L. PARKER
Bloomington



AURORA PEREZ
Alice

THOS. E. PERRY
Robstown

MARGARET
PORTERFIELD
Kingsville





MAX R. REED
Kingsville

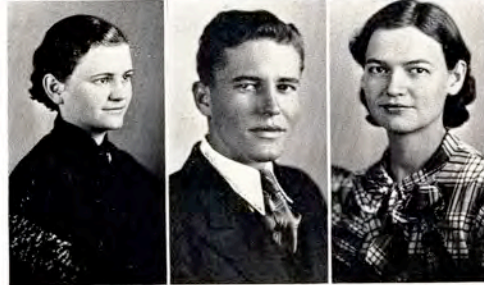
MAYDEAN PRATT
Corpus Christi

JEWEL REUTHINGER
Corpus Christi

INEZ ROSS
Agua Dulce

GEO. RIEDEL
Karnes City

SOPHIE RUSHING
Runge



MARGARET MAXINE
SHELL
Gregory

EDNA SAIN
Alice

MILDRED OLENE SIMS
Beeville



EUGENE SMITH
Kingsville

VIRGINIA SPRUCE
Floresville

FRANCES SUTHERLAND
Kingsville



NINFA TREVINO
Mission

N. B. TANNER, JR.
Kingsville

ELVIRA VASQUEZ
Sinton



BEN F. WILSON, JR.
Kingsville

CORINNA VELA
Rio Grande City

MILDRED FRANCES
WESLEY
San Benito



ELLYCE MORGAN
Cuero

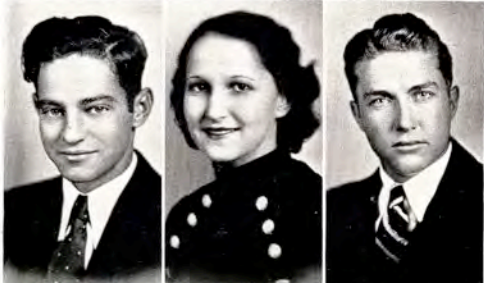
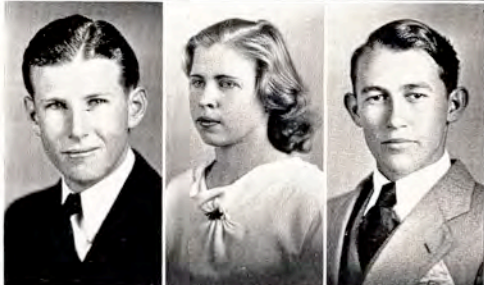
RAY MEYER
McAllen

MAURINE YARBOROUGH
Corpus Christi

TILFORD BEAN
Lampasas

JOYCE BALZER
Robstown

EDWIN BELL
Kingsville



GEORGE DEVILBISS
Taft

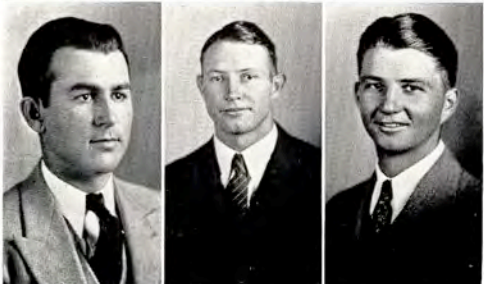
ALECE BENTLEY
Kingsville

ALLEN KNEIP
Karnes City

ROBERTO LONGORIA
Freshman
Grulla

ERWIN STEGER
Freshman
Manor

GEORGE W.
STEPHENSON, JR.
Junior
Kingsville



FRESHMEN



A. C. AGAN, Jr.
Corpus Christi

ALICE ALLEN
Aransas Pass

RUTH NIXON ALLEN
Corpus Christi



EMMA BARRERA
Mission

JULIA ANDERSON
Weslaco

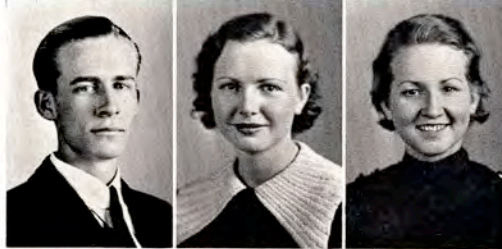
RUTH BEASLEY
Kingsville



LEMUEL W. BLACK, JR.
Laredo

IDA JANELLE
BLACKBURN
Berclair

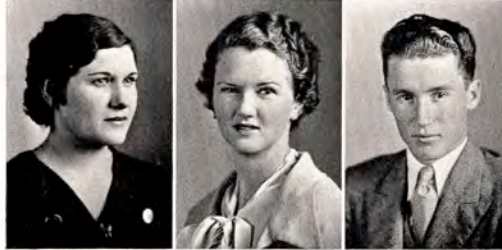
MARGARET D.
BLUNTZER
Corpus Christi



LILLIE BOYKIN
Falfurrias

WINNETKA BOSWELL
Bishop

FRED BROWN
Mathis



J. V. CHANDLER
Kingsville

JOHNNY CARPENTER
Refugio

MARY PEARL BURNETTE
Beeville



LOLA BLANCHE COWLEY
New Boston

ALVA LEE COOKE
Corpus Christi

FLORENCE COLLINS
Kingsville



LENA ELIZABETH DAVIS
Berclair

LUCILE DONAHO
Kingsville

KENEDY DREYER
Raymondville

EVELYN FLEMING
George West

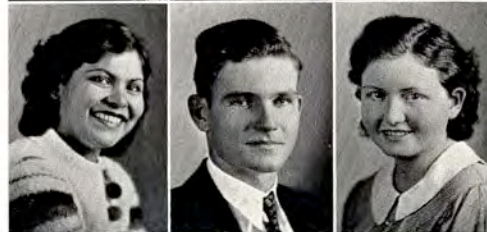
MILDRED FLEMING
George West

ELTON D. FORD
Taft

MATILDE GUTIERREZ
Laredo

ROBERT GOODWYN
Kingsville

MAUDENIA HALLER
Robstown



DOROTHY LEE CURTIS
Palacios

REBA CUMMINS
Agua Dulce

ONA DAVIS
Riviera

NOVIS ELKINS
Bloomington

PATRICIA ELLIOTT
Bishop

EDGAR ERARD
Kingsville

DORIS ESTELLE FRY
Driscoll

CAROL GEORGE
Rio Hondo

ROSITA GARCIA
Kingsville

MARJORIE LEE
HINNANT
Mathis

LOIS HART
Sinton

MARGARET HIBLER
Marble Falls



REBECCA HINOJOSA
Pharr

HELEN HORTON
Gregory

HELEN HOWELL
San Antonio



CLARA MARIE JORDON
Batson

MARY MARGARET
KEEPERS
Kingsville

ELOISE JACKSON
Corpus Christi



DOROTHY LEBER
Mathis

EVELYN LEBER
Mathis

LOIS LEMOND
Alice



CLAIRE LEWIS
Sinton

IRMA LONGORIA
Rio Grande City

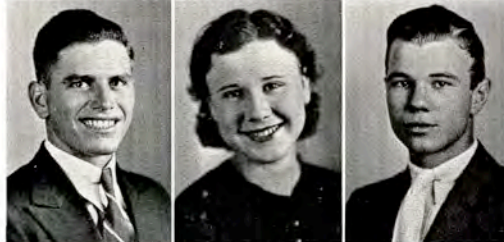
CORENE LINDBERG
Edna



LLOYD B. LUKER
Stockdale

ANN LUTENBACHER
Goliad

JACK G. MATHIS
Kingsville





NORVEL McCAULEY
Kingsville
FAIRY MARGARET
MARTIN
Sinton
MARY BELLE
MURCHISON
Kingsville

ROBERT C. McROBERTS
Kingsville

DORIS MILLER
Sinton

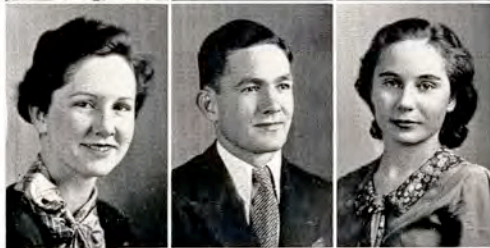
DUNAGAN MOODY
Taft



LAURA NEELEY
Beeville

TAYLOR NELSON
Crockett

FLORINE NANAY
Bishop



WALTER CHARLES
NORTH
Corpus Christi

ANNA MAY NIERMAN
Kingsville

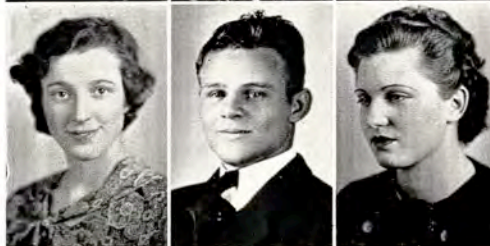
HARVEY NOBLE
Kingsville



LUCYLE PARRISH
Kingsville

J. B. PARR
Robstown

RUTH LUCILLE
OSBORNE
Alice



LAUSTA POWELL
Beeville

MAUD RAKOWITZ
San Antonio

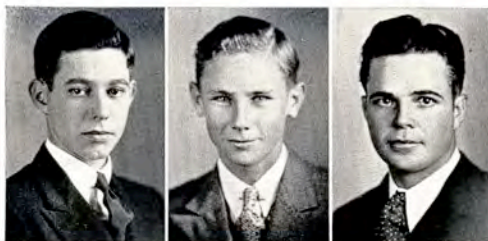
ADA VIRGINIA PETTUS
Goliad



STAFFORD REES, JR.
Beeville

CLIFFORD RILEY
Bloomington

CLIFTON RICHARDS
Driscoll



ELEANOR ROBINSON
Bishop

G. T. ROGERS
Corpus Christi

INEZ RYLANDER
George West



HERBERT SCHULZE
Corpus Christi

CRYSTAL CLAIRE SAUER
Cuero

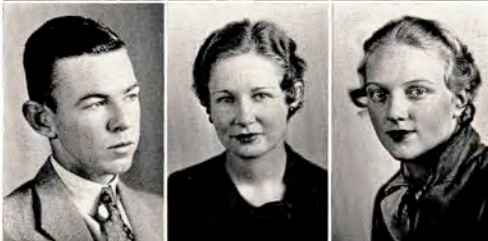
JOHN N. SAVARIO
Kingsville



THOMAS A. SIMONS, JR.
Kingsville

ELIZABETH SPRUCE
Floresville

MARY SKINNER
Corpus Christi



HAZEL SLAY
Robstown

GEORGE SMITH
Taft

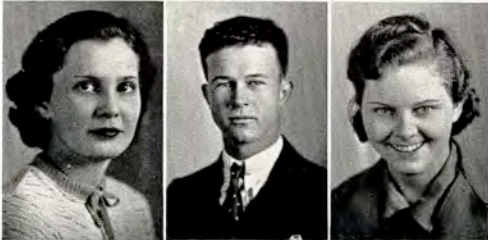
LEONA GARLAND SIMS
Kingsville



FRANCES CLAIRE TALLY
Goliad

FRED STONE
Raymondville

LEOLA TANNER
Kingsville





HATTIE ANN TESAR
Flatonía

MICKEY TOMME
Raymondville

ANGELA TRAD
Falfurrias

ROY TRANT
Kingsville

ERNESTINA TREVINO
Alice

GUADALUPE TREVINO
Roma



JOHN WESLEY TUNNELL
Gregory

ALIDA TREVINO
Rio Grande City

SAM TUMLINSON
San Perlita

CARROLL VAN BROOK
Corpus Christi

IRENE VASQUEZ
Sinton

FINLEY VINSON
Corpus Christi



RODERICK W. WEBB
El Campo

JAMES R. WEST
Refugio

LUKE WADE
Kingsville

JESS WOOD
George West

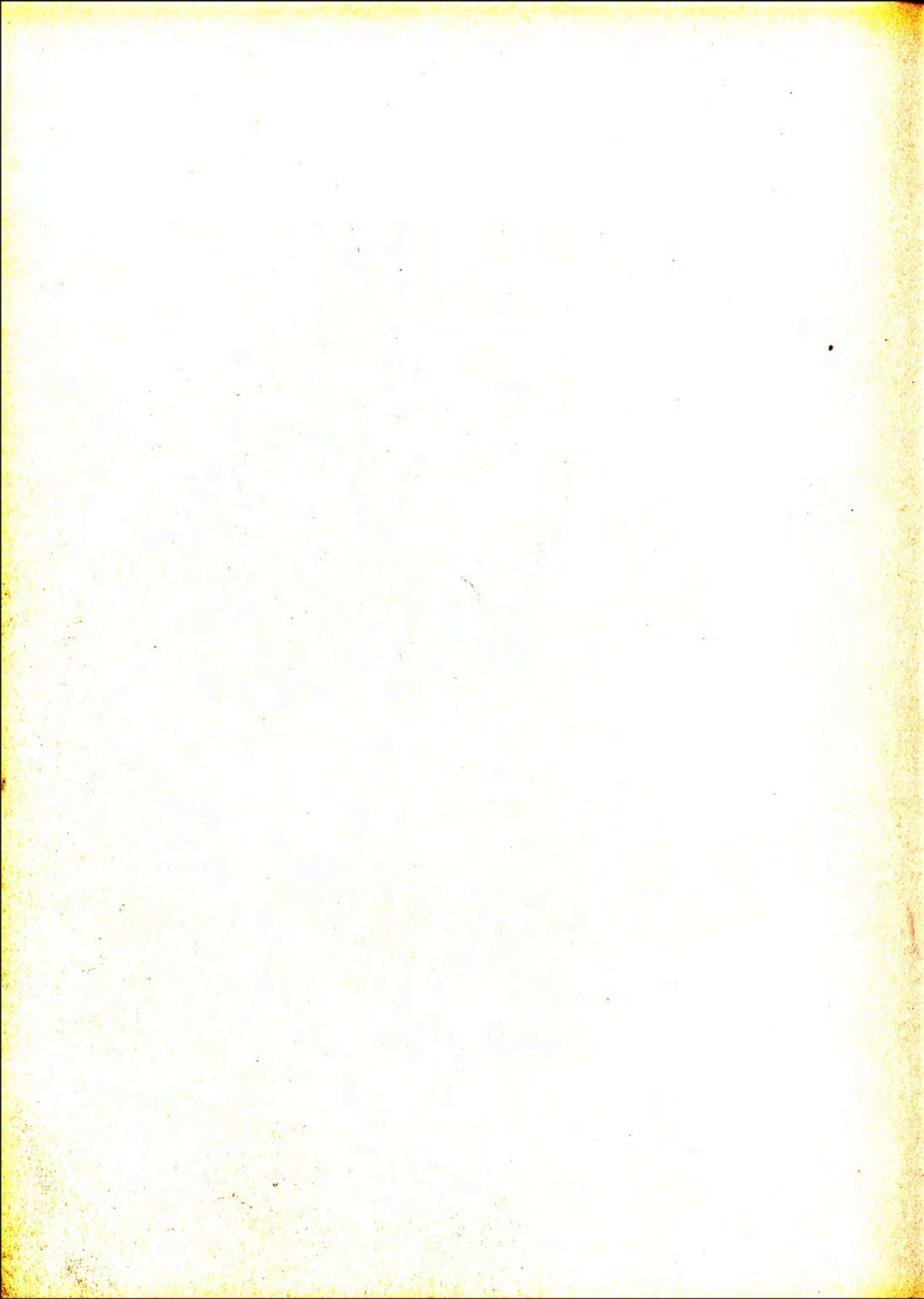
BILLY WOOD
George West

PHELEMON WRIGHT
Floresville



PHOTOGRAVURE





Us big business men.

*Playing jacks--first or second
childhood?*



*Where have we seen this
combination before?*

*Pop May shows 'em how to
roll them sevens.*

*Florence numbers the bricks--
just some move of this Delta
Theta initiation.*



*Five pigtails under a palm
tree--or are they Delta
Thetas?*

*Jean and Virginia--Jean's
the shy-looking one.*

*Three Gammas resting from
some of their hard work.*





Philliber carries teacher's books.

Waiting for a fire.



Is she that funny, Johnny?

Sara waits for her only class.



Two Alpha Sigs--Jackson and Keepers.

On the spot.

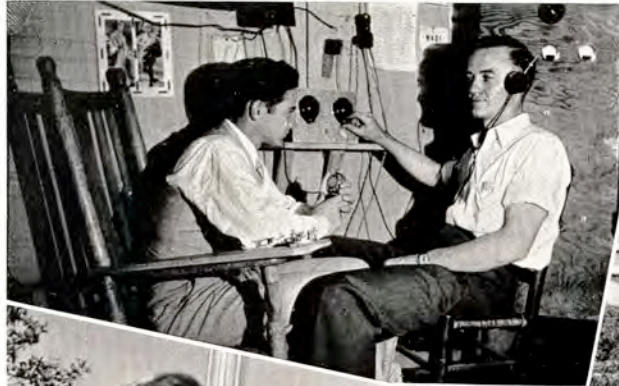
Been eavesdropping, Gracie?



The tennis hero and his heroines.

George and Kenith show how they spend their spare time.

Mr. Frazier--Runt to you.



Just between you and me and the lamp-post.

Mary Belle--the campus editor.

Good old porch-rail.



Occupied.

And pre-occupied.

Grandma, what big eyes you have!



The tennis team starts out in the Evans Limousine.

Just waiting for a street-car.

Humble--the scholar and gentleman (?)





"Aunt Het."

The most widely experienced porch swing in the world.

Faye has been here long enough to get that dazed expression, but where did Ida Janelle get it?



North the hash slinger.

Jewel always has something like this in tow.

"Racket" club.

The librarian and her library.



It must be Monday.

"Good(e) girls."



Lena herself.

All eyes toward the Ballard house.

The Frede House limousine.



The spring cleaning.

Beeville Belles.



*Is it possible that these are
two of a kind?*

That tired feeling.

*The kind of line every well-
equipped co-ed uses.*



When do we eat?

Up a tree?



Olene and Rowena.

*The whole Smith
House.*



AGGIE DORM



The man with the hoe.



Lying in the hay--all day.



*Waiting at the gate for
Katie--to milk the cows.*



*Vern almost looks like a
cow-puncher.*

*Doing the chores (churning
the butter.)*



Three of a kind.

*Poultry husbands, or
husbandry.*

BALLARD HOUSE

*Guess we'll have to walk
after all, fellows!*

Heap Big Chief.

Kangaroo Court.

*The House of Seven Gables
(Clark.)*

Fools and their money.

Letters tied in blue.

*Abie, the fish man.
(Mama, here's that man
again.)*

*Don't be look like Richard
Dix?*



SHORT COURSE
PARADE

We love a parade.

The Rotary float.



*The only people in town that
didn't get in the parade.*

*Our old favorite---
Dr. Montgomery.*



*The A. & I. Pep Squad
gets in the parade too.*



*Prof. Bass led the horse-back
riders.*

*The Kingsville Pep Squad
follows the Corpus Band.*



*Our Velvet Jerseys--do you
recognize them?*

**IMPORTANT
EVENTS**

*Working for suction,
Harry?*

*Pansy sings "Trees" for the
Senior tree-planters.*



*The tree planters sing
"America."*

*George shovels dirt this
time.*



*Shaper whispering "Little
Nothings."*

*Margaret on the way to
the shack.*

*Who are the flowers for this
time, Lefty?*



*Dreyer sings "The Last
Round Up." Where's
the microphone?*

*Two Korges--Woodrow
and Edith.*



SPANISH CLUB

Lupe alone--all, all alone.

Discussing the weather and other reports.



An unexpected pose.

The serenaders.

The Unholy Three.



The Spanish Club leaders.

Rosa and Jimmy.

Three señoritas from Laredo.



SPANISH CLUB

The Duchess and her Duke-Charming.



The garden gets some new flowers.



The bird bath.



New etiquette--gentlemen first.



Getting each other told.



An ace in the hole.



Three's a crowd.



A couple of pals.



Everything's fair in love and tugs of war.



Heavy, heavy, bangs over your head.





*A New P. E. Course---
fencing.*

The fatal stab.



Captain Dixon.

*This scene was evidently
posed.*

*The Rich are always
with us.*



Notice the resemblance?

*Somebody furnished the book
for the picture.*

*Somebody must be holding
her on.*

Two on a coke.

*Hell hath no fury like that
of a woman spurned.*

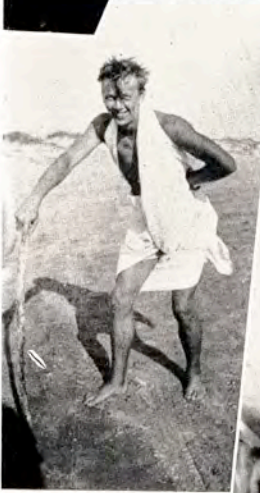
*Barnett and Vollmer--
fishermen deluxe.*



*Gbandi (himself)
Finnegan.*

*Elliott and the mighty
Bodin.*

*Two schoolmarms make for
the bus.*



Bogel shows how it's done.

*"T" men and their new
sweaters.*



*Jerre and Dave--Mr. Nertz
to you.*

The Stockton house.



HERE AND THERE

Three faculty members turn
fisher-women--Yeager,
Kirven and Alexander.

The Music Meet crowd
gathers.

The 1933 summer faculty
baseball team.



A "bull session" at the east
entrance.

Mrs. Jester brings home
the bacon.

"Emmy" Emerson.



How did this little Soph bag
this big fish?

The Alley Rats.

SUMMER ACTIVITIES

This ice cream and cake are sbo' good.

Fraser, Gillette, and Manning snatch a bite between rushes.



Just be patient, folks--you'll get there by and by.

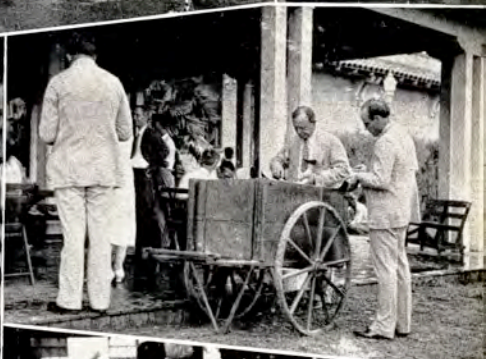
The cake-eaters.



Faculty members around the water (melon) wagon.

A dean caught with a mouth-full.

A summer ed and co-ed find other attractions besides watermelon.



Bogel and Vollmer like theirs without spoons.

Prexy likes watermelon, too.



BETA GAMMAS



The Campbell car is evidently the most important member of this club.

New accessories--radiator cap, bumper guards, and fender lights.

Meet the Queen.



Two Gammas and their gents-in-waiting.



Seven Pettin' Ramblers.



Does everything come to those that wait?

The librarians-- Mikel, Dietz, and Mikel, Inc.



Body by Fisher (Adv.)

DELTA THETAS

*Been touring the country,
Jean?*

*Some of the Delta Thetas--
ain't they a sweet bunch?*

*Winifred returning from the
Sugarbowl.*

*Five "T" men--and
what men!*

*What are you standing on,
Taylor?*

*Florence enters the junk
business.*

Tat, Winnie, and Pat.

Lan ana Lena.

Sara's stand-by.

Miss Liz--school-marm.

Keepers of the Morgue.

Un-attached.

*Frances holds the books while
Sis lays 'em out.*





This P. E. Class takes its turn at tennis.



Two natives--Murchison and Tanner.



In the spring the co-eds fancies lightly turn to thoughts of tennis.



Dr. Judd Mortimer Lewis-- "I would like to be a pier, stretching far out to sea."



Meyer and Starkey complete another dangerous trip over the board-walk.



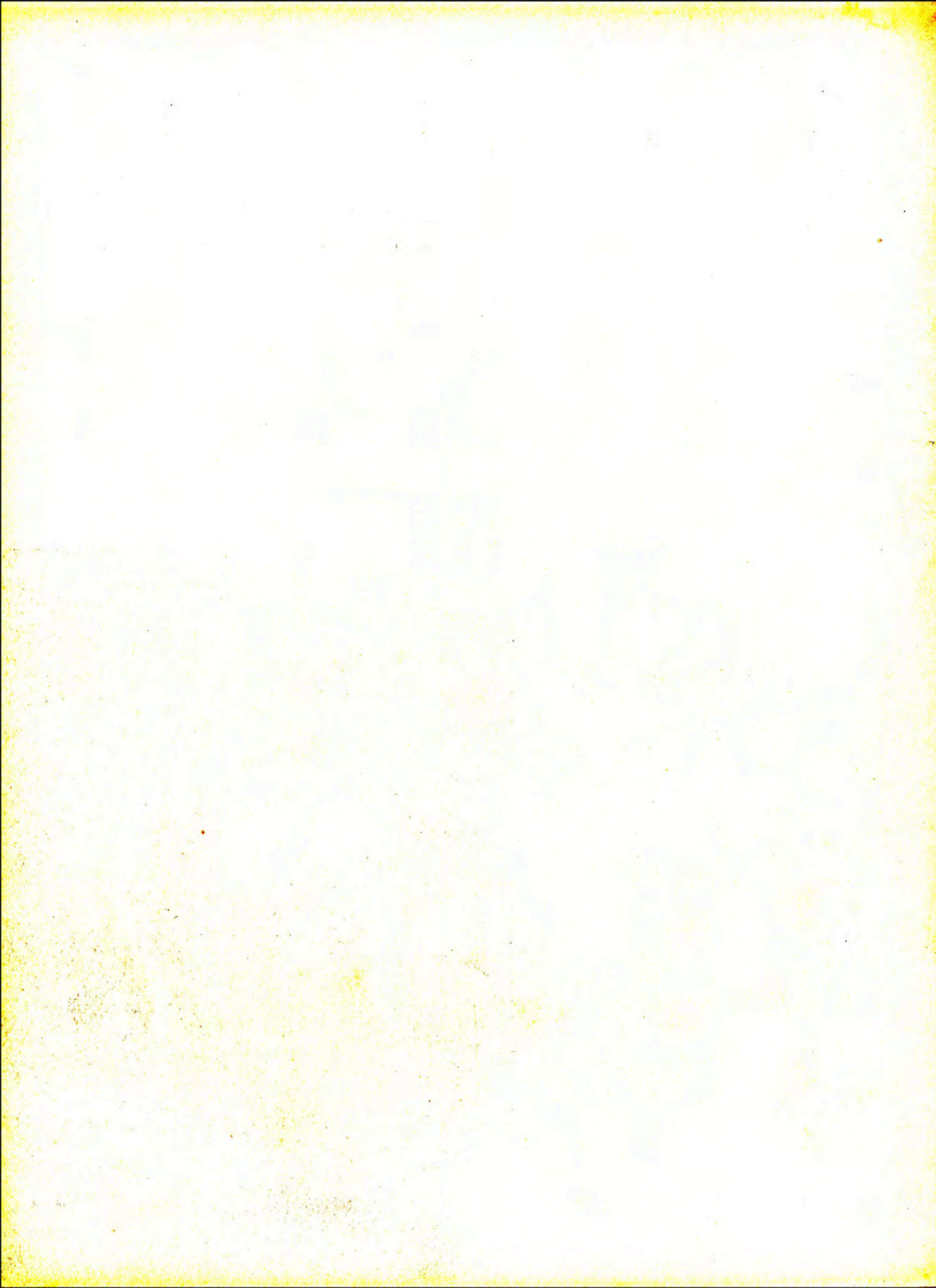
Moon and Underwood--nuff said.



Headed for the gym.



Five Aggies strike a sentimental pose.



FOURTH ESTATE



EL RANCHO 1934



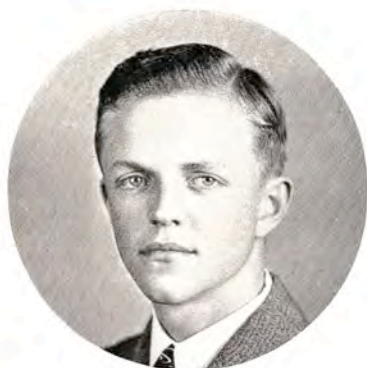
AGAN

PRATT

BALLARD

HART

VAUGHN



FRED CONNELL

The staff of El Rancho 1934 has attempted to conserve faithfully the student life of the year. The primary purpose of this year-book is to keep a permanent record of college interests which will do much to enrich the spirit of our institution.

EL RANCHO 1934

The Staff

FRED CONNELL Editor-in-Chief
 HERNDON VAUGHN Associate Editor
 JOAN PURDON Business Manager
 LOIS HART Secretary to Staff

JOHN GILLETTE Organization Editor
 KAY BALLARD Senior Class Editor
 JAMES C. PORTER Junior Class Editor
 MAYDEAN PRATT Sophomore Class Editor
 A. C. AGAN Freshman Class Editor
 JOHN HARRIS Sports Editor
 JEAN SINCLAIR Girls' Sports Editor
 BILL BARNARD Tusk Editor
 LUCYLE PARRISH Calendar Editor



JOAN PURDON



SINCLAIR



PORTER



PARRISH



GILLETTE



HARRIS

THE SOUTH TEXAN



HOUSE

BROWN

LUNDELL

WEIKEL

NANCE



FRANKLIN REED

The South Texan, weekly newspaper published by the students, has attempted to do several things during the current year. It has tried to bring news of important events to the students, to amuse, to stimulate college spirit, and to cause youth to think. The staff of the publication has worked hard and earnestly toward these ends.

The quality of the publication has always been high. It has been entered in the newspaper division of the Texas Intercollegiate Press Association for the past three years, and has been ranked among the first three each year.

THE SOUTH TEXAN

The Staff

FRANKLIN REED Editor-in-Chief
HAROLD BROWN Associate Editor
and Circulation Manager
CLIFF McCALL Business Manager

MARGARET HOUSE Feature Editor
HELEN LUNDELL Organizations Editor
MARGARET CUBAGE Society Editor
MARY BELLE MURCHISON Campus Editor

Reporters

ELROY WEIKEL
LUCYLE PARRISH
MAURINE YARBOROUGH
G. C. PARRISH

MARGARET NANCE
ETTA MARIE MOORE
CLAIRE LEWIS
WINIFRED BEALL

JOHN GILLETTE



CLIFF McCALL



BEALL

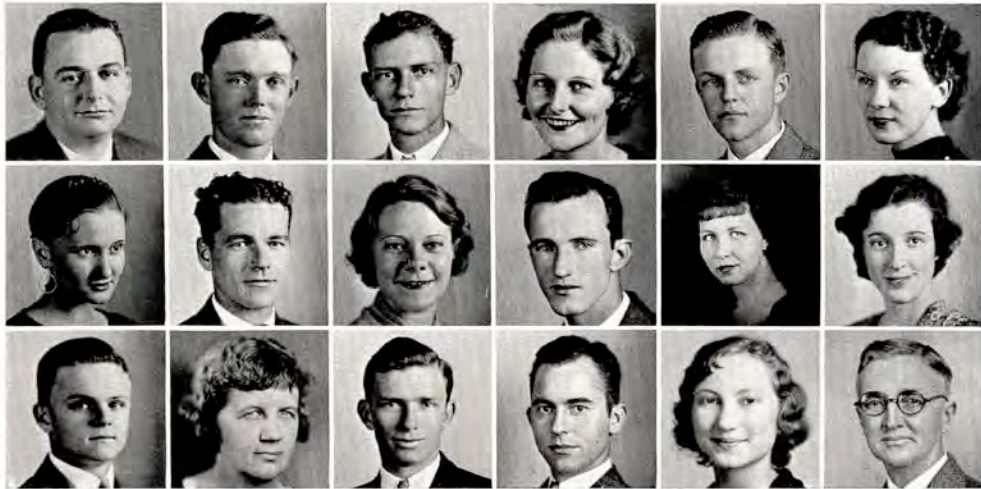
LEWIS

CUBAGE

PARRISH

GILLETTE

THE PRESS CLUB



TOP ROW: McCALL, OWINGS, REED, PURDON, CONNELL, NANCE.
 MIDDLE ROW: HOUSE, BROWN, LUNDELL, G. C. PARRISH, MURCHISON,
 L. PARRISH.
 BOTTOM ROW: AGAN, ALEXANDER (SPONSOR), N. REED, VAUGHN, DUKE,
 CONNELL (Sponsor).

The Press Club of 1934 has been very active in promoting local publications, in sponsoring contests for the T. I. P. A., and in the development of the organization itself as a campus interest.

It has been the policy of the club this year to have programs furnished by the members themselves. There have been many interesting social events.

The delegates to the T. I. P. A. convention in Abilene were Fred Connell, Joan Purdon, Franklin Reed, and John Harris.

Officers

CLIFF McCALL President
 FRED CONNELL Vice-President
 JOAN PURDON Secretary-Treasurer

CAMPUS



ALPHA CHI



TOP ROW: JENKINS, STOKES, UNDERWOOD, LOECKLE, GILLETTE.
MIDDLE ROW: DIETZ, PORTER, PETTY, CONNELL, WOOLDRIDGE.
BOTTOM ROW: SHELTON, SINCLAIR, BOGUSKIE, BATCHELDER, HARRIS.

For the recognition and promotion of scholarship among its students, the Texas College of Arts and Industries has an organized body, Alpha Beta Chapter of Alpha Chi, formerly the Robert Bartow Cousins Chapter of the Scholarship Societies of the South. This general organization was founded in 1922 by Dr. H. Y. Benedict of the University of Texas. In order to meet the increased demands made on the scholarship society the Executive Council, now the National Executive Council, which met at Denton February the twenty-first and twenty-second, 1934, decided to change the name of the organization to Alpha Chi. In accordance with this system, since we are chapter number twenty-six, our chapter designation is now Alpha Beta. The expanded organization now is national in scope instead of regional.

ALPHA CHI

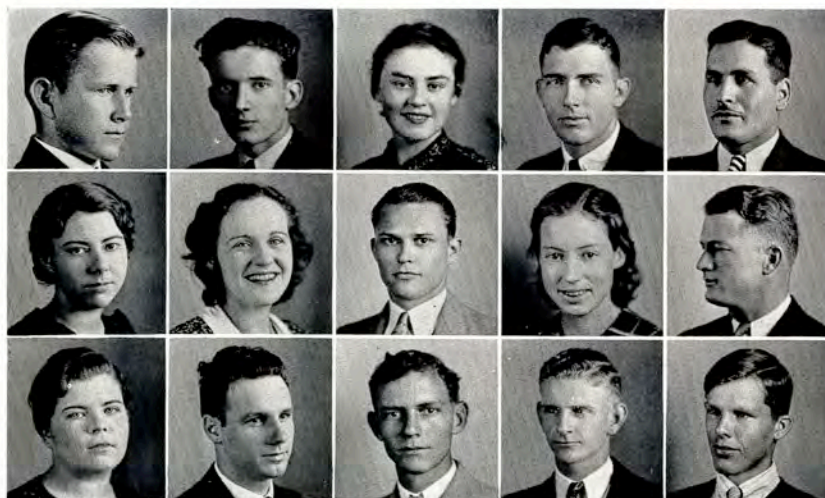
Officers

JOHN GILLETTE President
EVELYN LOECKLE Vice-President
BEATRICE STOKES Secretary
LOUISE UNDERWOOD Treasurer

Sponsors

MRS. MAY H. DICKENS MR. CLYDE T. REED
MR. JEFF D. SMITH

TOP ROW: GLASGOW, MAYFIELD, DAVIS, SADLER, AGUIRRE.
MIDDLE ROW: DRABEK, BLACK, STARKEY, ADAMS, BROWN.
BOTTOM ROW: BEALL, KRAMME, REED, RUMBLE, LADD.



ROBERT J. KLEBERG HISTORY CLUB



TOP ROW: SIMONS, STOKES, BUNDICK, UNDERWOOD, REED, SAUER, WEIKEL.
BOTTOM ROW: MORGAN, SALYER, ELLIS, VINSON, MARTIN, HENNINGS, SIMS.

"History Is A Pageant, Not A Philosophy"

The Robert J. Kleberg History Club has the honor and distinction of being the oldest club in our college. At the meetings, held twice each month, discussions of various phases of Texas History are carried on. Particular interest is placed on local history. The Club possesses a valuable museum containing articles of historical interest.

Each spring the club makes a field trip to some place of historical significance. This year's visit was made to Gonzalez.

One of the highlights of the club's program was the annual banquet held in April.

ROBERT J. KLEBERG HISTORY CLUB

Officers

RAYMOND BUNDICK President
BEATRICE STOKES Vice-President
LOUISE UNDERWOOD Secretary
THOMAS SIMONS Treasurer
ELROY WEIKEL Reporter
MRS. MAY H. DICKENS Parliamentarian

Sponsors

MR. J. E. CONNER MRS. MAY H. DICKENS
MR. L. J. SMITH

TOP ROW: BOYKIN, BUNDICK, HARDT, STONE, PARR, NIERMAN, EPPERSON.
BOTTOM ROW: COWLEY, WESTLAKE, ALLEN, BROWN, ANDERSON, RAWLINGS, FINNEGAN.



DORA K. COUSINS ENGLISH CLUB



TOP ROW: HAIRE, DIETZ, UNDERWOOD, ADAMS, ROBBINS, BATCHELDER.

BOTTOM ROW: SHELTON, LINDBERG, PFLUGER, RUSHING, PETTY, BOGUSKIE.

Taking as its motto, "Measure Your Mind's Height By the Shadow It Casts," the Dora K. Cousins English Club, since its organization in 1925, has endeavored to carry out that standard by studying literature, both English and American. The programs, carefully planned and carried out, have been arranged with the idea of the pleasure, culture, and enjoyment.

The club was fortunate in having the opportunity of presenting as guest speaker in assembly on one Monday morning Dr. Judd Mortimer Lewis, poet and prose writer of Texas, contributor to the Houston Post, and first poet laureate of Texas.

Outstanding among the social events in which the club engaged were a Valentine party, a coffee for the faculty members, honoring Dr. Lewis, and many social courtesies extended by the sponsors, Mr. and Mrs. W. A. Francis.

DORA K. COUSINS ENGLISH CLUB

Officers

LOUISE UNDERWOOD President
HAZEL HAIRE Vice-President
EUGENIA ADAMS Secretary
DORA DIETZ Reporter
ELGIN B. SHELTON Parliamentarian
MR. W. A. FRANCIS Sponsor

TOP ROW: MOON, BEALL, STARNES, ALLEN, CUMMINGS, HARDT.
BOTTOM ROW: CLARK, GARRISON, GEORGE, REED, SLAY, WOOLDRIDGE.



THE AMADO NERVO SPANISH CLUB



TOP ROW: BEALL, I. LONGORIA, GONZALEZ, VINA, CUELLAR, SANCHEZ, AGUIRRE.
 MIDDLE ROW: A. GARCIA, R. LONGORIA, B. BARRERA, E. BARRERA, I. VASQUEZ, B. BARRERA,
 E. VASQUEZ.
 BOTTOM ROW: LINDBERG, TREVINO, GARRISON, JIMENEZ, G. GARCIA, VELA, R. GARCIA.

In the fall of 1932 the Spanish Club reorganized, selecting for its name that of the Mexican poet, Amado Nervo. Under the able leadership of its presidents, Hector de Pena and Abelino Aguirre, the organization has steadily progressed and has made for itself a name among the clubs of the Texas College of Arts and Industries.

Membership is open to all students interested in the Spanish language and in the culture and history of Spain and Spanish America.

MOTTO: *"El que persevera alcanza"*

COLORS: *Red and Yellow*

Sponsors

MISS HELEN HUNNICUTT

MR. JEFF D. SMITH

Officers

ABELINO E. AGUIRRE	President
CARMEN SANCHEZ	Vice-President
ELIDA CUELLAR	Secretary-Treasurer
WINIFRED BEALL	Reporter
OLIVIA GARCIA	Historian

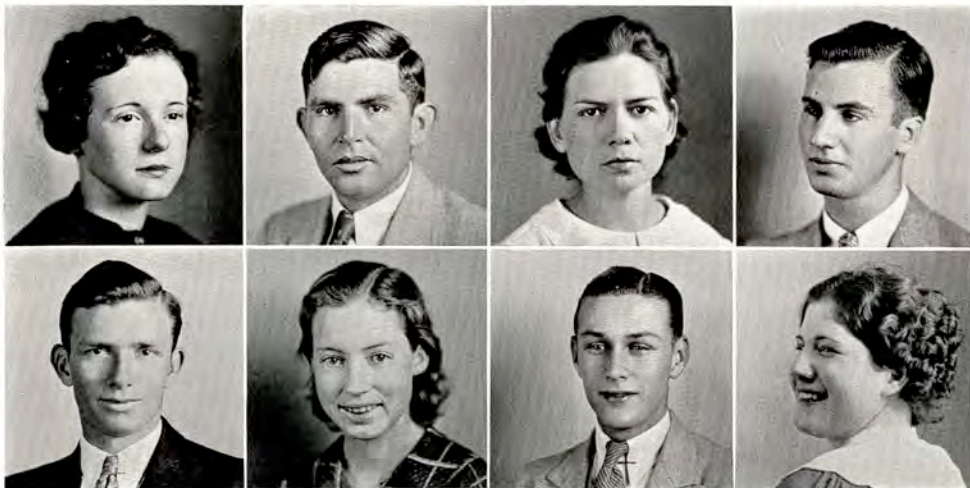
BAPTIST STUDENTS' UNION

The B. S. U. is composed of the Baptist students of the Texas College of Arts and Industries. The B. S. U. council consists of regularly elected president and secretary-treasurer, and all officers of the College Sunday School and B. Y. P. U. The purpose of the B. S. U. is to develop in Baptist students an interest in church work, and to create a bond of interest between the various young people's organizations of the church.

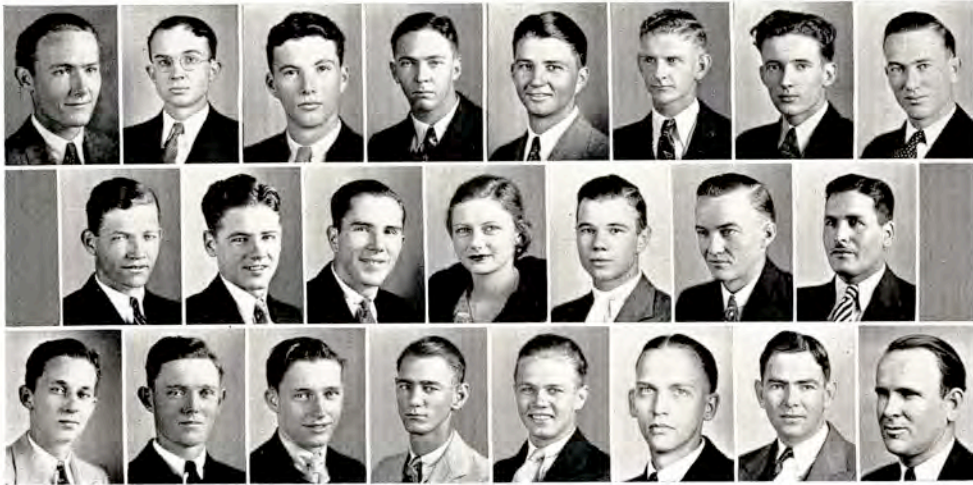
Officers

JOHN HARRIS President
RENA CAMPBELL Secretary
J. E. TURNER President, Boys' Class
FAYE LILLY President, Girls' Class
NOEL REED President, B. Y. P. U.
J. V. CHANDLER Vice-President, B. Y. P. U.

TOP ROW: LILLY, TURNER, CAMPBELL, HARRIS.
BOTTOM ROW: REED, ADAMS, CHANDLER, HIBLER.



A. & I. ENGINEERS



TOP ROW: JENKINS, G. MAYFIELD, PORTER, DAVISSON, STEPHENSON, RUMBLE, D. MAYFIELD, KAY BALLARD.

MIDDLE ROW: KELLAM, LINNEY, KENNEY, RAMONA BALDRIDGE (Sweetheart), MATHIS, KENITH BALLARD, AGUIRRE.

BOTTOM ROW: WEBB, OWINGS, HINTGEN, DREYER, TUMLINSON, RICHTMANN (Sponsor), STRAITON (Sponsor), PEURIFOY (Sponsor).

The Texas A. & I. Engineering Club was chartered in September, 1930, under the direction of R. L. Peurifoy. The chief purpose of this organization is to foster more social contacts and acquaint the members with engineering principles and industries. Social standing is placed on a higher level by the sponsoring of picnics, inspection tours, and dances. The Engineers are the "builders" of industry, of friendship, and of a bigger Texas College of Arts and Industries.

Officers, Fall Semester

KAY BALLARD	President
DREW MAYFIELD	Vice-President
ROBERT RUMBLE	Secretary
ALFRED DAVISSON	Reporter
LEO KURTZ	Sergeant-at-Arms

Officers, Spring Semester

ODIE JENKINS	President
G. M. MAYFIELD	Vice-President
JAMES PORTER	Secretary
PRENTISS McCLELLAN	Reporter
ROBERT RUMBLE	Sergeant-at-Arms

FUTURE FARMERS OF AMERICA

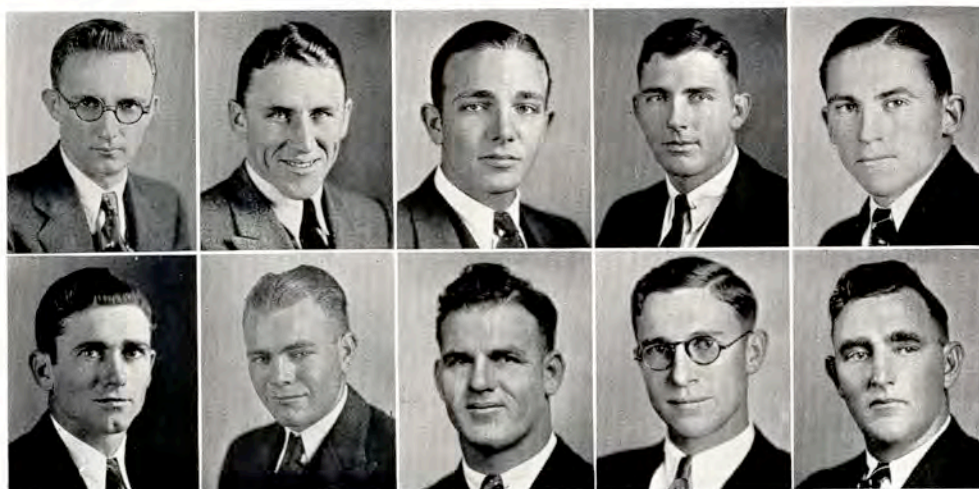
COLLEGIATE CHAPTER

This chapter of the Future Farmers of America was organized when the Texas College of Arts and Industries began teacher training for teachers of vocational agriculture. The members of the organization are prospective teachers of vocational agriculture and are required to carry out a program similar to the ones that they will be required to organize in their respective high schools after graduation. The local chapter meets twice each month, and the programs presented are from agricultural teachers, state supervisors and others who are interested in this phase of the work.

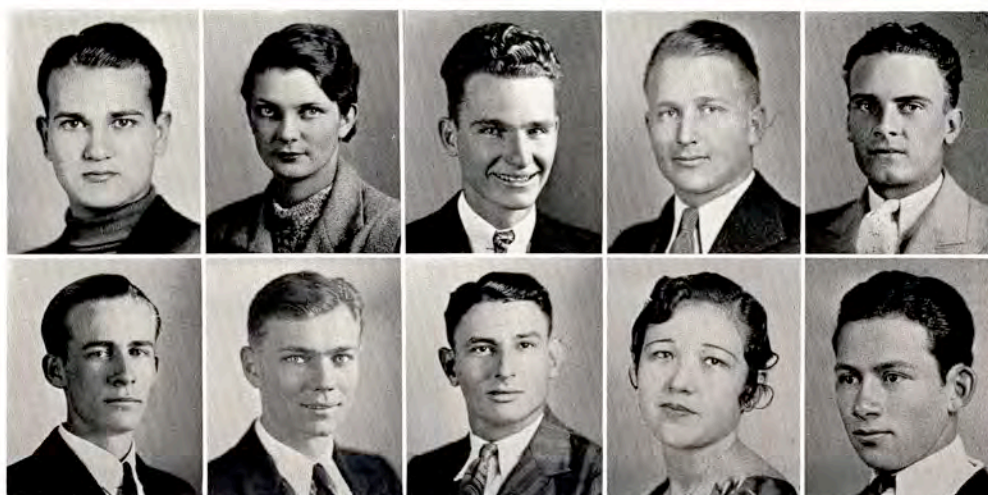
Officers

HOKE McKIM	President
T. L. ARTHUR	Vice-President
VERN CONNER	Secretary
GERALD FRY	Reporter
R. J. COOK	Advisor

TOP ROW: McKIM, FRY, ORCHARD, SADLER, ARTHUR.
BOTTOM ROW: ALLEN, CONNER, WEISS, CORNS, COOK.



PRE-MED CLUB



TOP ROW: LYND, PRATT, TUNNELL, HANKINS, PARKER.
BOTTOM ROW: BLACK, WOOD, JIMENEZ, UVEDA, FIGUEROA.

The Pre-Med Club aims primarily to give its members a foretaste of their chosen profession. Both local and visiting physicians have addressed the club on subjects related to the medical profession, and club members have been permitted to witness a number of major operations in the local hospital.

On their own initiative the members have studied and reported on a variety of technical material. The club avoids formality and seeks to cultivate a liberal and scientific student attitude.

Officers

BILLY LYND Chairman
MAYDEAN PRATT Secretary-Treasurer
GEORGE McCLELLAN Reporter

THE FOOTLIGHT CLUB

The Footlight Club consists of students who are interested in drama and the theater. Enjoyable meetings are held on the first and third Mondays of each month, and attention is given to drama, playwrights, and actors of the present. It also sponsors the annual one-act plays staged by the high schools of this section, and presents several one-act plays of its own during the year.

The Club, ably sponsored by Miss Pecaut of the Dramatic Art Department, has inaugurated an important event this year in sending a one-act play to the state contest. The play presented by the club was "Mansions".

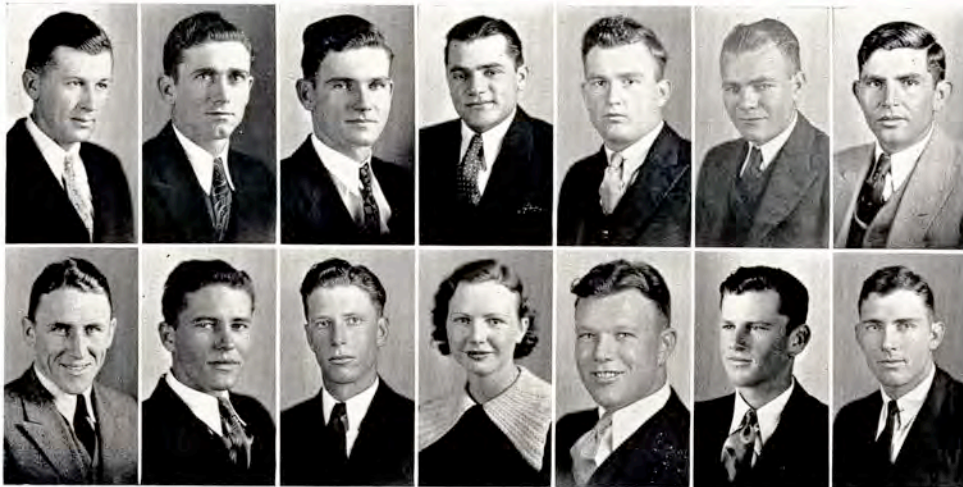
Officers

CLIFTON ADAMS President
MARGARET CUBAGE Vice-President
MARGARET SHELL Secretary-Treasurer
MISS MILDRED PECAUT Sponsor

TOP ROW: CUBAGE, SHELL, HINTGEN, SINCLAIR, PARRISH, CATES.
MIDDLE ROW: BLAIR, KRAMME, ELLIOTT, CHANDLER, UNDERWOOD, HARRIS.
BOTTOM ROW: MORGAN, GEORGE, HORTON, MARTIN, L. PARRISH, OSBORNE.



"AGGIE" CLUB



TOP ROW: MOON, ALLEN, GOODWYN, O. NEDBALEK, COX, CONNER, TURNER.
BOTTOM ROW: FRY, RIEDEL, EDWARDS, BLACKBURN, DOWIS, DENSON, SADLER.

The "Aggie" Club was organized in the fall of 1928 for the purpose of bringing together students of Agriculture and Agricultural leaders of this section to discuss timely agricultural topics and to develop agricultural leadership among its members.

The Club meets twice each month. It sponsors various agricultural activities both on and off the campus. Among these are The Annual Farmers and Homemakers Short Course, and The South Texas Vocational Agricultural Judging Contest. Two Aggie dances and several Aggie picnics are sponsored annually, and the school year is always closed with an Aggie Round-up in which all ex-Aggie members and agricultural leaders of this section as well as present members are brought together for a banquet and a general good time.

"AGGIE" CLUB

Honorary Members

MRS. ALICE K. KLEBERG MR. E. W. SEALE

Officers, Fall Semester

VERN CONNER President
 FRANK WINES Vice-President
 OSCAR NEDBALEK Secretary
 TYRUS T. COX Treasurer
 GEORGE RIEDEL Pitchfork Wielder

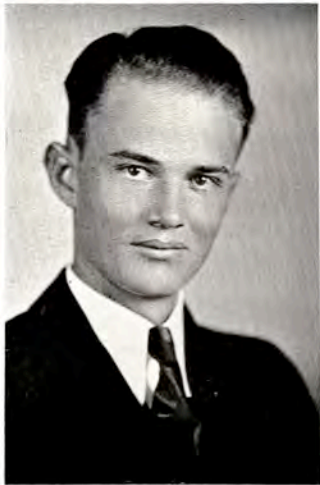
Officers, Spring Semester

J. E. TURNER President
 TYRUS T. COX Vice-President
 ANDREW EDWARDS Secretary
 GEORGE RIEDEL Treasurer
 GERALD FRY Pitchfork Wielder

TOP ROW: McCAULEY, McKIM, CROSS, OLENE SIMS (Sweetheart), WADE, SMITH, WRIGHT.
 BOTTOM ROW: LUKER, BUNDICK, MOODY, D. NEDBALEK, MEYER, FORD, HAUN.



EX-STUDENTS ASSOCIATION



KERMIT BALLARD
Vice-President



LOYCE ADAMS
Secretary



HERSCHEL CUDD
President

The Ex-Students Association is an organization consisting of all students who have attended the Texas College of Arts and Industries.

One of the purposes of the Association is to present to the people of Texas, particularly South Texas, the benefits of having such an institution as the Texas College of Arts and Industries in their midst.

One of the accomplishments of the Ex-Students Association has been the establishment of the Robert Bartow Cousins Loan Fund, which provides funds for those who otherwise could not receive a college education. The efficiency with which this fund has been handled is shown by the fact that it has reached twenty per cent of the students.

A further aim of the Ex-Students Association is to lend its influence to the growth and development of the Texas College of Arts and Industries. The Ex-Students are working to the end that this College may maintain its rightful place as one of the major institutions of Texas.

STUDENTS' COUNCIL

The students of the Texas College of Arts and Industries make their desires known and exercise their rights through the Students' Council, which is composed of student representatives duly elected by the Student Body.

Among the manifold duties of the Students' Council, the three outstanding ones are: to regulate and supervise all student activities in an impartial manner; to promote a friendly understanding and general cooperation among the faculty and students; and, to uphold and practice the precedents of growth and development.

Its aim is to develop a stronger student spirit; to advocate good sportsmanship; and to install Texas College of Arts and Industries as the Acme of South Texas.

FRANKLIN REED
South Texan

JOHN MARK DIXON
Athletics

FRED CONNELL
El Rancho

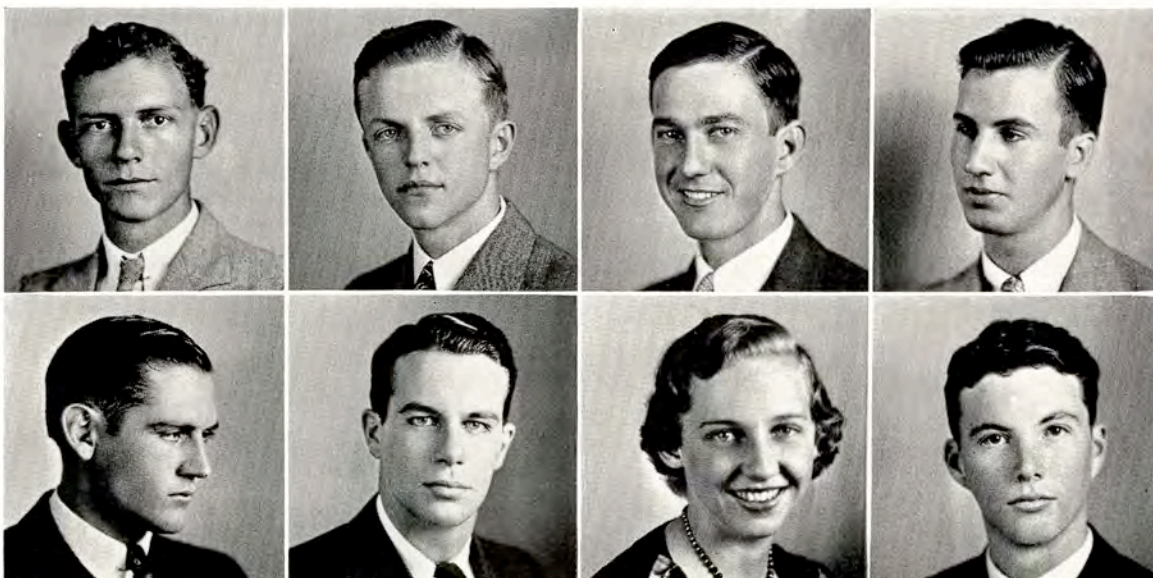
BILL BLAIR
Yell Leader

JOHN GILLETTE
Vice-President

ANNA MAY NIERMAN
Freshman Class

JOHN HARRIS
President

JAMES C. PORTER
Junior Class



ALPHA SIGMA



TOP ROW: BLAIR, SPRUCE, BARNETT, MALONE, BURKE.
BOTTOM ROW: NEELY, V. SPRUCE, KEEPERS, SIMS, PETTUS.

The Alpha Sigma has brought to a close another successful year. Each member has contributed a part which has stimulated the growth of the oldest and one of the most active social organizations on the campus.

The history of the Alpha Sigma started its course on September 24, 1927, to promote the intellectual, the moral, and the social life of the college.

ALPHA SIGMA

Officers

Fall Semester

MARY GRACE BARNETT President
 JERRY MARTIN Vice-President
 ELINOR CHAPMAN Treasurer
 ELLA MAE MALONE Secretary
 HELEN BLAIR Reporter

Spring Semester

JERRY MARTIN President
 ELLA MAE MALONE Vice-President
 ELINOR CHAPMAN Secretary-Treasurer
 ELOISE JACKSON Reporter

Sponsors

MISS GRACE BAILEY MISS VILA B. HUNT

Honorary Sponsor

MISS LILA BAUGH

COLORS: *Lavender and Green*

FLOWER: *Larkspur*

TOP ROW: SHELL, HOLCHAK, MARTIN, JACKSON, BURNETT.
 BOTTOM ROW: VAN BROOK, BELL, JOHNSON, SKINNER, HUNT (Sponsor).



DELTA THETA



TOP ROW: CUBAGE, ELLIOTT, GWIN, SORENSON, NANCE.
BOTTOM ROW: TALLEY, KENNY, COLLINS, DUNLAP, SIMS.

The Delta Theta brings to a close another successful year. The girls in the club have again proved themselves leaders in the promotion of scholarship, personality, social graces, and friendship among the girls in college.

B E T A G A M M A



TOP ROW: ROBBINS, DIETZ, MIKEL, NIERMAN, RUSHING.
BOTTOM ROW: M. SALYER, E. SALYER, ADAMS, PARRISH, COOKE.

Beta Gamma, the youngest social organization in the College, has had a happy year. Friendships have been strengthened through closer association with each other in common interests. Character building, creative living, and social development are the aims of the organization.

BETA GAMMA

Officers

Fall Semester

MARIE ROBBINS _____ President
SOPHIE RUSHING _____ Vice-President
DORA DIETZ _____ Secretary-Treasurer
SARAH MIKEL _____ Reporter

Spring Semester

MARY SALYER _____ President
DORA DIETZ _____ Vice-President
ELIZABETH SALYER _____ Secretary-Treasurer
LUCYLE PARRISH _____ Reporter

COLORS: *Pink and Green*
FLOWER: *Pink Carnation*

TOP ROW: LILLY, CRAWFORD, BLACKBURN, TANNER, POWELL.
BOTTOM ROW: HAIRE, HORTON, GLASS (Sponsor), BROWN (Sponsor),
CAMPBELL (Sponsor).



THE A. & I. MALE CHORUS



FRONT ROW: HARBIN, ARTHUR, BROWN, BARNETT, HARRIS, RILEY (Director),
BLAIR, ROBERTS, TURNER, WEIKEL, McCULLEY, ADAMS.
BACK ROW: ROBERTSON, DIETZ, ARCE, STEPHENSON, KELLAM, PATRICK,
ROGERS, ATKINS, PERRY, FERGUSON, CLAMPITT, SADLER, SNYDER.

The A. & I. Male Chorus of the Texas College of Arts and Industries is one of the most popular organizations on the campus. Each year the Chorus makes a tour, visiting high schools in South Texas and appearing before various civic organizations. This year the Male Chorus has presented several programs over Radio Station WOAI in San Antonio. The Chorus is under the direction of Paul M. Riley.

Officers

FRANK BARNETT President
GEORGE HARRIS Vice-President
J. E. TURNER Secretary-Treasurer
GEORGE McCULLEY Business Manager

A CAPPELLA CHOIR

The A Cappella Choir consists of thirty voices selected from music loving students of the Texas College of Arts and Industries. The Choir is outstanding because of its selection of unusual sacred and secular program music. The activities of the Choir have carried the members to surrounding towns for concerts and radio programs. This group of students has set a high goal for the music loving people of South Texas and plan to continue their interesting work. The Choir is under the direction of Paul M. Riley.

FRONT ROW: RILEY (Director), KENNY, DAVIS, HORTON, YARBOROUGH,
WEIKEL, DIETZ, HARBIN, ARTHUR, PATRICK, PERRY, SIMS,
WESTLAKE.
BACK ROW: WARMACK, GARCIA, BAILEY, CURTIS, CLAMPITT, KELLAM,
ADAMS, ROBERTS, TURNER, FERGUSON, SINCLAIR, HOUSE,
OSBORNE.



WOMEN'S GLEE CLUB



TOP ROW: GARCIA, HOUSE, M. M. SINCLAIR, WESTLAKE, DAVIS, J. SINCLAIR.
BOTTOM ROW: BLAIR, LUNDELL, MARTIN, ALLEN, COLLINS, SIMS.

The Women's Glee Club has sung on many programs this year. Among its out-of-town appearances was one before the District Rotary Convention at Laredo.

BUSINESS ADMINISTRATION CLUB

The Business Administration Club has as one of its aims the fostering of fellowship among students and instructors. It seeks also to give the students a contact with the world for which they are preparing. Speakers are brought in who have achieved success in business and in other pursuits open to the B. B. A. graduate.

Officers

E. H. HAUN President
 JOHN ROGERS Vice-President
 BERNICE ROLF Secretary-Treasurer
 LOUIS SHAPER Reporter

TOP ROW: ROLF, HAUN, SHAPER, GWIN, BLUNTZER, CARPENTER, HALLER, LINDBERG.

SECOND ROW: DUNCAN, NORTH, STEGER, MILLER, CALDCLEUGH, SLAY, DIETZ, SIMS.

THIRD ROW: DRABEK, BLACK, PERRY, BLAIR, McCALL, VINSON, BURKE, LOECKLE.

FOURTH ROW: HARRIS, ADAMS, HART, FOSTER, FINNEGAN, DOUGHTY, REAMS, HARBIN.



ALPHA TAU ALPHA



TOP ROW: HUSER, NORRIS, SADLER, HAGLER, COOK, LANCASTER, SEALE.
 BOTTOM ROW: McKIM, FRY, BINGHAM, WHITE, REED, CONNER, CORNS.

In 1930, a small group of agricultural students formed a local honorary organization in which membership was based on scholastic attainment and leadership. In the fall of 1933, Alpha Tau Alpha, a National Agricultural Educational Fraternity, accepted this group of students and this organization as the twelfth chapter in the National Organization of Alpha Tau Alpha. Its purpose is the promotion of high scholastic standing, and the building of agricultural leadership. The Mu Chapter was installed at the Texas College of Arts and Industries by the National President, Dr. A. W. Nolan, on January 29, 1934.

Officers

C. W. HUSER President
 FRED B. NORRIS First Vice-President
 J. A. HAGLER Second Vice-President
 CLIFFORD SADLER Secretary-Treasurer
 R. J. COOK Faculty Advisor





ATHLETICS

COACHING STAFF



JOHN MARK DIXON
Freshman Coach



ROBERT M. HODGKISS
Freshman Coach



C. E. JEWETT
Assistant Coach

To The Javelina Graduates:

My first realization of the extent to which the twelve men who have played their last year on the Varsity football team will be missed came to me the first few days of the Spring Practice just ended. It was like working with a new group, and with due respect for the new men out this Spring, I failed to see demonstrated the fierce tackling of a Hodgkiss or a Kercheville, the fine blocking of a Rich or Couch, the elusiveness of a Cox, the calmness and determination of a Philiber, the all round end play of a Sadler or a Teel, the steadiness of a Rogers, the strength of a McCauley or a Fry, or the passing ability of a Speer.

The above men who have won a total of 38 letters have been the backbone of the fine teams of the past several years. To them is due most of the credit for bringing A. & I. athletics out of obscurity to a position where they are now respected and admired by all college teams and football fans in Texas.

In basketball Sadler, Rogers, and Harris, with their fine all round play have come to the graduation point and leave with a wonderful record as mainstays on a team which won over Texas University, Texas A. & M., and Loyola University of New Orleans.

In conclusion, let me say to you football and basketball men that your courage, determination, skill, intelligence, and fine traits of character have been a constant inspiration to me, and I appreciate more than words can express the many contacts I have had with each of you. Your fine work in athletics is traditional at A. & I., and the record you have made will be extremely difficult for future teams to match.

BUD McCALLUM.



A. Y. McCALLUM
Head Coach

ATHLETIC COUNCIL



TOP ROW: MANNING, GLASS, CAMPBELL, JEFF D. SMITH.
BOTTOM ROW: DIXON, COUSINS, RICHTMANN, MAY.

The Texas College of Arts and Industries has just completed another very successful year in athletics. Both coaches and men are to be congratulated.

May I take this opportunity to thank, on behalf of the members of the Athletic Council, the faculty, the pep squad, the band, and the entire student body for their splendid cooperation.

The increasing interest of the student body and faculty in intra-mural athletics will mean much for our college in the years to come.

Sincerely,

J. R. MANNING,
Chairman, Athletic Council.

FOOTBALL



FOOTBALL

Javelinas 0

Rice 7

September 23

The A. & I. Javelinas opened the 1933 season with the Rice Owls of Houston. After a great defensive battle by both clubs the Owls pushed over a marker in the closing minutes and kicked the extra point for the only score of the game to win 7-0. If a star could be named for the game, it would be big Bob Rich, 190 pound wingman for the Hogs. He turned in a good game on defense and offense. Other A. & I. stars were Hodgkiss in the line and Barnes and Philliber in the backfield.



Javelinas 25
Randolph Field 2

September 29

The Hogs defeated the Randolph Field Flyers of San Antonio in their second battle of the year 25-2. The Speer to Dixon pass combination produced the most spectacular play of the fray. Both went into the game with time left for just one more play in the first half. On this play Speer faded back, heaved a beautiful 30 yard pass to Dixon, who then traveled unmolested the remaining 40 yards to the goal line.



MARTIN HODGKISS
Co-Captain
Tackle

BASIL PHILLIBER
Co-Captain
Halfback

ROBERT RICH
End

VERNON COUCH
Quarterback

ALBERT COX
Half back

CLIFFORD SADLER
End

FOOTBALL

Javelinas 19
McMurray 0

October 6

A 19-0 victory for the Hogs was the result when the McMurray Indians traveled to Kingsville on October 6. McNabb was the star of the game as he went over twice for scores in the first quarter, one of them coming on a 50 yard return of a punt.



Javelinas 0
Texas A. & M. 17

October 14

Coach Bell's A. & M. Aggies furnished the Javelinas with opposition in what many consider the big game of the year for the Hogs. Although defeated 17-0 by the Farmers, the Javelinas played some classy ball under the lights in San Antonio. McCormick, Javelina center, in spite of a fractured arm, was easily the outstanding defensive star of the game. Domingue, the Frenchman who had given the Hogs so much trouble the season before, was again the spark-plug of the Aggie attack. He scored a touchdown, kicked an extra point, and a field goal to tally the points on the Hogs.



JOHN MARK DIXON
Co-Captain Elect
Half back

DICK KERCHVILLE
Quarterback

JOE D. MCCAULEY
Tackle

ALLEN BARNES
Fullback

HARMON TEEL
End

GERALD FRY
Guard

FOOTBALL



Javelinas 37

Sam Houston 6

October 27

After a week of rest, the Hogs traveled up to Huntsville to plaster a 37-6 defeat on the Sam Houston Bearkats. After a slow start, the Hogs found themselves in the second half and were irresistible. The Hog line functioned as a unit, and Ramey and Dixon were the most spectacular backfield performers. It was in this game that Ramey found himself, proving a terror to the remaining teams on the Javelina schedule.



Javelinas 37

Daniel Baker 7

November 4

The big home-coming game of the year, the tilt with Daniel Baker at Kingsville, turned into an easy victory for the Hogs by the score of 37-7. A large crowd was present to see the Hogs and cheer them on. Cox and Barnes scored twice each to lead the Hogs. The feature of the game was Cox's 70 yard return of a punt.



CHARLES HOLDEN
Co-Captain Elect
Tackle

EARL HARBES
Guard

JOHN ROGERS
Tackle

LOWELL RAMEY
Fullback

LUPE KING
Guard

JOHNNY MCNABB
Half back

FOOTBALL

Javelinas 39

*Abilene
Christian College 0*

November 16

After an open Saturday the Hogs traveled to Abilene to defeat the Abilene Christian College Wildcats by the biggest margin of the year, 39-0. Ramey and Barnes, with three touchdowns each, were the outstanding Javelina performers. The completeness of the Hog victory was shown by the fact that the Hogs counted 32 first downs while holding the Christians to 2, and that the Hogs counted 32 first downs while holding the Christians to 2, and that the Hogs were not forced to punt a single time.



Javelinas 36

Schreiner 0

November 25

In the final game of the year, the Hogs came out with a well-earned victory over Schreiner 36-0. Ramey was again the star, with Philliber going over twice to lead the scoring. Ramey kicked four extra points in this game, while Hodgkiss blocked a Mountaineer kick for a safety.



JACK SCHUEPBACH
Halfback

VERNON HUSTON
Quarterback

RICHMOND MASSEY
End

EARL HUTCHISON
Center

GLENN FRAZIER
Reserve

CHARLES CUMBERLAND
Reserve

REVIEW OF SEASON

Coach "Bud" McCallum's 1933 Javelina football team had one of the most successful seasons ever enjoyed by an A. & I. athletic team. Of the total of eight games played, the Hogs were victorious in six and lost two, both of the losses being to members of the Southwest conference, Rice and A. & M. The Hogs extended their record of being undefeated outside the Southwest conference to three straight years. In the matter of scoring, the Hogs set a good record. Their offensive stars scored a total of 193 points, while their defense was good enough to hold the opponents to 39 points. Twenty-one of these points were scored by Rice and A. & M.

The impression left in Abilene by the Javelinas is expressed by the following excerpt from the Abilene Morning News of November 17, 1933:

"A magnificent, irresistible football team came to the Abilene field yesterday. It wore the blue of Yale, executed its plays from the Notre Dame shift, and charged with the fury of Army, Michigan, Duke, and Georgia. This All-American combination is known as the Texas A. & I. Javelinas, and if they are not big time footballers, the fans of Abilene will not see a big time football team any time soon.

"A. & I.'s seven linesmen charged as one, opening holes of the proverbial horse-and-wagon calibre. Through them the Javelina backs dashed, virtually ignoring the secondary tacklers, and stopping only when ganged by three or four Abilene players. After A. & I. received the kick-off, only eight plays elapsed before the first touchdown. Ramey made it from the eleven yard line, stopping on the five yard stripe to pick up the Wildcat backfield and give it a ride over the goal. Ramey kicked the point."

SCHEDULE

Season 1933

SEPTEMBER 23	JAVELINAS	0	RICE	7
SEPTEMBER 29	JAVELINAS	25	RANDOLPH FIELD	2
OCTOBER 6	JAVELINAS	19	McMURRAY	0
OCTOBER 14	JAVELINAS	0	TEXAS A. & M.	17
OCTOBER 27	JAVELINAS	37	SAM HOUSTON	6
NOVEMBER 4	JAVELINAS	37	DANIEL BAKER	7
NOVEMBER 16	JAVELINAS	39	ABILENE CHRISTIAN COLLEGE	0
NOVEMBER 25	JAVELINAS	36	SCHREINER	0

BASKETBALL



VARSITY BASKETBALL



Javelinas 24	A. & M. Aggies	21
Javelinas 46	Texas University	57
Javelinas 27	Texas University	31
Javelinas 33	Texas University	32
Javelinas 31	Rice Institute	35
Javelinas 39	Denton	25
Javelinas 23	Denton	21
Javelinas 31	Nacogdoches	37
Javelinas 36	Huntsville	34
Javelinas 59	Sul Ross	31
Javelinas 48	Sul Ross	39
Javelinas 64	Corpus Christi	20
Javelinas 66	Loyola University	28
Javelinas 38	Corpus Christi	23
Javelinas 34	Rice Institute	36
Javelinas 42	Randolph Field	28
Javelinas 36	Beeville	17
Javelinas 45	Beeville	27
Javelinas 55	Daniel Baker	36
Javelinas 57	Daniel Baker	41



JOHN "BIGFOOT" ROGERS
Captain
Forward

JOHN MARK DIXON
Captain-Elect
Center

CLIFFORD "CLIFF" SADLER
Forward

JOHN "LEFTY" HARRIS
Forward

SUMMARY BASKETBALL

Of the twenty games played, A. & I. won fifteen and lost five for a percentage of .750. The losses were to Texas University (twice), Rice Institute (twice), and Stephen F. Austin Teachers.

In these twenty games the Hogs scored 834 points for an average of 41.7 markers per game. The opposition scored 619 points for an average of 30.9 markers per game.

The greatest margin of defeat suffered by the Hogs was 11 points in the first Texas U. game. The greatest margin of victory was 44 points in the first Corpus Christi game. The highest score run up by the Hogs was in the Loyola game with 66 points. Three games went into overtime periods, with the Hogs winning in all three.



GLENN "RUNT" FRAZIER
Guard

JOHNNY "PEEWEE" McNABB
Guard

G. C. PARRISH
Reserve

JAMES "PETE" PORTER
Reserve

ALBERT STOVALL
Reserve

TENNIS

A. & I. opened the 1934 tennis season with only two lettermen back: George Stephenson and Clifford Sadler. Sadler was lost to the squad for most of the season but managed to get into some of the last matches. Three members of last year's freshman squad were added to the team: Tom Perry, James Doughty, and Delmar Ross. The other men, Stanley Baker, John Rogers, Louis Shaper, Tom Denson, John Gillette, and G. C. Parrish, were out for the first time. Tom Perry was elected Captain by the squad in the fall.

Matches were won over the Corpus Christi Independents (twice), A. & I. Ex-Students, and Sam Houston Teachers College. Losses were suffered to South West Texas State Teachers College, North Texas State Teachers College, and to Edinburg Junior College (twice).

The following men, ranking in the order named, were awarded letters: Stephenson, Perry, Baker, Doughty, Shaper, Rogers, and Sadler. Sadler, Rogers, and Shaper will be lost to the team next year through graduation. However, we will have a fairly experienced team with Stephenson, Perry, Doughty, Baker, Ross, and Parrish back. Bramlette of the Freshmen is expected to make it interesting for the veterans.



THE LETTERMEN

COACH STRAITON

CAPTAIN PERRY AND
STEPHENSON
No. 1

SHAPER

ROGERS

SADLER

BAKER
No. 3

DOUGHTY
No. 4

POLO

Polo is rapidly gaining prominence in the athletic interests of the college. A large number of students are familiar with the game, and definite arrangements are being made whereby next year polo will become a part of the official athletic program of Texas A. & I. Several college students play with the Kingsville team in the South Texas Polo Circuit. This circuit is composed of teams from Robstown, Odem, San Diego, Corpus Christi, and Kingsville. These students are: Frank Moss Barnett, Ben F. Wilson, Jr., Norvel McCauley, and Edgar Erard.



FRANK MOSS BARNETT
Captain

NORVEL MCCAULEY

BEN F. WILSON

EDGAR ERARD

THE KINGSVILLE TEAM

ASSOCIATION

ALLEN BARNES
VERNON COUCH
ALBERT COX
BANTZ DOWIS
GLENN FRAZIER
JOHN GILLETTE
EARL HARBES
MARTIN HODGKISS
VERNON HUSTON
EARL HUTCHISON
JOHN KELLAM
DICK KERCHEVILLE

Officers

ROBERT RICH
President

JOHN MARK DIXON
Vice-President

FRANK ALLEN
Secretary-Treasurer

CHARLES HOLDEN
Sergeant-at-Arms

JOHN HARRIS
Reporter

LUPE KING
JOE D. McCAULEY
EUGENE McCORMICK
JOHN McNABB
RICHARD MASSEY
BASIL PHILLIBER
LOWELL RAMEY
CLIFFORD SADLER
JACK SCHUEPBACH
LEONARD SPEER
GEORGE STEPHENSON
HARMON TEEL

W. A. A.

The Woman's Athletic Association is one of the most active athletic organizations on the campus.

The members of the organization participate in the various sports: tennis, swimming, baseball, volleyball, basketball, and archery.

The Racquet Club is active during the Spring at which time the annual ladder tournament for girls' tennis is held. Blue and gold felt awards are given and the winner is awarded the silver trophy.

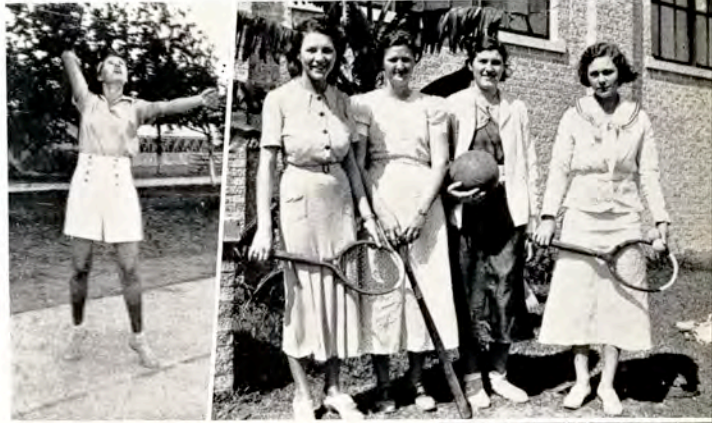
The girls are also allowed to enter the Engle Cup Tournament for girls each Spring. Miss Eugenia Adams was winner of the cup last year.

Officers

EUGENIA ADAMS _____ President
 MARY MARGARET SINCLAIR _____
 _____ Vice-President
 JEAN SINCLAIR _____ Secretary-Treasurer
 PETE RYLANDER _____ Reporter

Sponsors

VIRGINIA CAMPBELL CLARA W. GLASS



An ace, Margaret!

What an expression, Campbell.

A Strike!

Tennis, Baseball, Volley Ball, and more Tennis.

The BIG THREE, in Volley Ball.

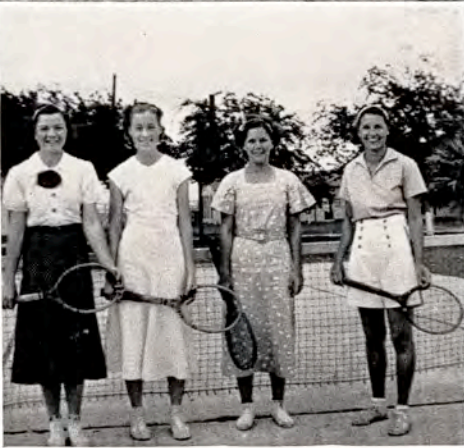
Real Sports.

W. A. A.

Time out!



Why the grin, Margaret House?



*Four that rate in tennis: Miller, Adams,
Donaboe, Porterfield.*



Confident sportsmen, eh what?

JAVELINA TUSK

In order to prevent anyone from reading it through without realizing it, I wish to state that the following section is the razz section, and is rather hopefully supposed to be amusing.

To be sure, it is not as amusing as the rest of the book, but that is only because the worthwhile study of camera fright which you so proudly refer to as "My Picture", and those notable achievements, the Club Write-ups, rest conspicuously on pages preceding this one, thereby rendering them unbeatable as far as humor is concerned.

May it be understood that this section is in no way intended to be an instructive dissertation on small schools, as small schools being the sensible necessities they are, will no doubt continue to flourish long after the writer is gone, and no longer considers the terrible stuff he writes as funny.

At any rate, this is the razz section. If you can't laugh at it, then please do me the favor -- and try not to cry.

Signed,

The Tusk Editor

DEDICATION

Far to the East of San Francisco, and far to the West of New York, you will find Katabaw — a little Southern town nestling in the midst of a great, rolling, and vastly unproductive plain — and boasting neither of opportunity, scenery, wealth, resources, population, or future.

But it does boast however, no matter how justly, of Katabaw University, a small state school located within its limits, engaged in the sober manufacture of a stereotyped product, who later will be expected to make a living, appear respectable, play bridge, frown on big business, converse occasionally of books he should have read (but hasn't) and vote intelligently — although the last is a large order, and rather far fetched.

Katabaw University is not a place of beauty, either intellectually or spiritually. It is not prone to worry over its sanity or morality, or its lack of either. Its students are real people, stubbornly unimaginative people, and intensely normal people, who at times steadfastly believe in, and firmly advocate: Darwinism, Christianity, Communism, other people's business, mild class attendance, Conservatism, scholarship, the predominance of America, the toleration of England, celibacy, freedom, Sunday School, getting drunk, staying sober,

George Bernard Shaw, faculty omnipotence, the subjugation of the Orient, serenades, Roosevelt, necking, football, Lionel Barrymore, and Jeffersonian Democracy.

The faculty, for the most part a narrowly broadminded group, are somewhat conscientiously occupied in a half-hearted reformation of the students, in enthusiastic (and interesting) discussion of each other, and in attempting to maintain an appearance of moderate intellectuality, although the latter practice is often rather strained and painful, due to a widespread talent for bad acting.

All in all Katabaw University is enormously similar to countless other small schools scattered throughout the country. Individuality is missing in its list of theoretical virtues. But perhaps it does not wish to be individual! In spite of its many failings there is, however, a certain strength in its endeavors, a complacent warmth in its mediocrity, and a comparative freshness in its scandal.

The next few pages will be devoted to an attempt to picture for you, with some degree of accuracy, life at Katabaw. We can only hope that you will find new interest in the drab and commonplace, and possibly finish with a deeper appreciation of the peculiar.

KATABAW STUDENTS

The student body at Katabaw may be pleasantly likened to the ordinary and standardized sleeping accommodations on a Pullman car. There is an upper and a lower berth, both of which are equipped with a hammock (to put your shoes and baby in), and a straw mattress, a lumpy and long-lived article, not primarily calculated to insure perfect rest. Both are traveling in the same direction, both have the same locality as an objective, and both are made up by a tired darky named George. But only the lower berth has windows. Windows are dirty but transparent mediums through which tons of scenery may be observed, and small amounts appreciated. And windows are the outside interests of college life.

The inference, of course, suggests the two distinct divisions present in the Katabaw student body, namely: those who study, and those who wonder why the others study.

The studious type is the uncompromising majority. They are creatures disconcertingly clodlike, whose initiative ends in a blind stagger to the nearest reference book. Dullness is the solitary result of their zealous concentration on dull subjects, and their pitifully earnest groping after higher knowledge. Pool halls, to them, are the powerful rat-traps of iniquity, churches represent mankind's noblest efforts to be noble, and personality, like vaseline, is a by-product of coal tar, cannot be eaten, and may be purchased in natty boxes at the corner drug store. They sit in the library four years and emerge with a distorted sense of values, a virtuous distrust of human nature, and a comforting belief in the theory that individual depravity is highly unnecessary, and may be pleasantly avoided by telling children while young. Their life is a well planned, well oiled, never ending routine that will eventually (they think) lead to the "better things of life" including a home with an electric refrigerator, four progeny, agreeably like

themselves, and a delightful nap on Sunday afternoons. For several reasons, obvious, and honest, they consider the other division a reliable pack of impossible profligates.

Their reasons are not entirely unfounded or imaginary. The members of this second division, however, are far more empty-headed than they are dissolute (although they do not want that fact advertised), and are appropriately classed as the social set. The boys in this set are remarkable egoists who bray loudly of their capacity, their large lack of manners, their conquests (astounding imaginative triumphs), the money they spent last week, and their immense disrespect for churches, women, and scholars. They mournfully drag themselves to a minimum number of classes, in which they become for an hour unobtrusively unconscious, and then clomp out, relieved, unedified, and generally whistling. They are noisily conspicuous in the convenient college confectioneries, where they buy little, talk much, and hilariously slap members of the opposite sex in indecorous places. Their witticisms are abominably stale, their opinions are the same. Their shallowness is merely a mask for their tremendous ignorance, and they never seem to realize its lamentable transparency.

The girls are so very similar to their boy friends that a description of their habits, would, for the most part, consist of a painful repetition of the paragraph above. They are affected, and trivial, and marvelously silly. They are bov crazy and pseudo sophisticates. And they whirr harmlessly and giggle at all times.

And so we realize the divisions, the one, dully studious, the other dully superficial. Yet each is composed of exceedingly happy, extremely self-satisfied individuals, who do not consider themselves dull at all. What a very funny situation. It would no doubt be funnier if someone would tell them about it. Oh, my, yes.

KATABAW DANCES

This is the waltz — soft shoulders, rhythmic feet — the man, the woman, moving as one — dipping and gliding over the hardness of polished floor reflecting a shadow of lights — while the hypnotic wail of saxophones creates a subtlety of background, exquisite, enchanting, and marvelously compelling.

They dance at Katabaw too. They dance methodically once every two weeks — they dance even enthusiastically — but the spell is missing — the enchantment is somewhere else. The dances are held every other Saturday night in the school auditorium — an immensely practical — and amazingly dull chamber — square, pine floored, and depressingly colorless. Always a bad attempt at decoration is made; forlorn streamers flaunt disconsolately from passionless, hanging lights—and five posters, colorfully lonely, cheerlessly betray the evening's hosts.

The music starts at nine — begins lugubriously and discordantly, and consistently continues that way till midnight. The orchestra, a seven piece extravaganza, slumps on the stage, wears doubtful white pants, and scuffed shoes, and usually succeeds in conveying the impression of thoughtful boredom. They habitually delight in such classical runaways as "Nobody's Sweetheart", "Dinah", and "Sweet Sue" — probably because their listeners would prefer to dance slowly (and with feeling). Between numbers they complacently dissect the audience with critical eye, lap at cigarettes, and flick imaginary hairs off bagging blue coats. Their leader revels in ill-concealed superiority — superciliously consenting to play anything — and seldom getting it played in the same hour. They blare insolently at all times, and strive heartily to be heard at great distances. At twelve sharp they butcher "Home Sweet Home", collect twenty-five dollars, look exceedingly satisfied, and go home. They take their remarkably inaccurate musical ears with them when they go.

Those present at Katabaw dances generally include: fifty-odd couples, sixteen stags, and six chaperones. The stags monopolize most of the floor space, genially

pound each other on the back, and resourcefully hunt down unhappy couples to "break" on. The chaperones importantly retain a far corner, suitably equipped with a settee, a rug, two rockers, and an atmosphere of conservatism and restraint. Each couple hesitantly greets them on entering, avoids them scrupulously during the evening, and wrings their hand rather absently when it is over, meanwhile poking impatiently with free arms for slippery coat sleeves, and crying such blessed absurdities as "Wunnerful evening — sure good dance"! Thus they are afforded an excellent opportunity to determine at close range if Marjory Daw's dress is really immoral in front, and to sniffingly wonder if Bill Smith's mouthlout of Dentyne is not, in reality, camouflaging the odor of something a great deal stronger.

Among the dancers, the girls delight in being rushed, six steps with any one boy at any one time being Utopia. They gurgle effusively about nothing (particularly their popularity), and stroke their partners coyly on the backbone in generous floods of affection. For three consecutive hours they perspiringly string their favorite "line" at anyone in range, appear tiredly happy, and complain insistently of sore feet.

The boys, for the most part, razz the orchestra, cheer the orchestra, dance badly, scratch conspicuously, and devilishly drink bathtub gin during intermissions.

After the dance nearly everyone infests a downtown all night cafe, which is not at all desirous of being thus infested. The girls giggle and act "tight", the boys stagger, and are "tight", and the waiters look terrifically bored and comprehensively exhausted. Glasses are banged, plates are broken, and spoons are stolen. Everybody sings, orders a sandwich, eats a sandwich, and then, quite handily forgets to pay for it. In an hour the place is gratefully empty. A ponderous policeman sighs ponderously in quiet solitude. Katabaw has suffered another periodical attack of "Growing pains," has found them irritating, but somewhat necessary, and is content to be once more well on the road to refined and respectable normality.

ELSIE MORDANT

"Young women of today but rarely seek refuge in the beauties of nature. They do not seem to realize that almost any daisy has the power to soften the whine of a wailing world."

The gem above is a notable extract from "Pearls of Wisdom", a recent best seller by Elsie Mordant, renowned author, lecturer, sociologist, and girl scout leader.

One could hardly praise Miss Mordant loudly enough. She has dedicated the best years of her life to the service of her country, state, and community, and today is a recognized authority on the modern girl and her problems. She also knows a lot about the importance of eating raw carrots, and is eternally wondering if the redecoration of her back bed-room wasn't after all a rather useless expense.

Miss Mordant is as individual as she is brilliant. Her wit is amazing, her glamour is undeniable, and her silver white personality is a flash of cheer and warmth to one and all — especially the weary and downtrodden.

She is a staunch advocate of the independence of women. "What could be cuter", she prates, "than a home with babies and a fire-side". She believes, moreover that woman's place is in the kitchen, especially on Thursday afternoons when the cook is downtown over a bargain counter.

Miss Mordant is exceptionally broadminded about drinking. "It is a proven fact", she says, "that large quantities of milk and tomato juice tend to improve the health." Incidentally, she is the originator of that most interesting fad, "Drink More Water Week", which results each year in numerous cases of death by drowning.

At present Miss Mordant is sponsoring a movement calculated to put more clothes on Nudists. Her reason for this is more or less definite. "The Nudist, as I see him", she explains, "is displaying very little modesty, and very much of everything else".



BRAINS AND EGGS

(THEY'RE TELLING US)



An old dog is better than no dog at all. — "Roach" Smith.



Few men are huge successes —many men are huge failures —while some men are merely huge.—Lon L. Jeerman.



There are other things more interesting than physics.
— S. B. Wass.



Undoubtedly Mae West has many imitators.
—Merry Jartin.



Some people seem to think I'm dumb. — Junior Finiken.



Not all loud talkers compel envious recognition.
—Dim Jaughty.



Some people are more educated than they look.
—Edford Mevans.



Competition is the lice of life.
—Lalph Ranier.

BRAINS AND EGGS

(THEY'RE TELLING US)



It is one thing to be an educated man — and another thing to be an educated ham.

— D. Witt Havis.



Frankenstein wasn't so bad looking. I've seen worse — myself. — Ryde T. Cleed.



I retain two things of which I am justly proud. My religion is one of them.

—Welroy Yeikel.



What's a stale wisecrack between friends?—Pugh Horter.



I can't see that I'm really what you'd call beautiful.

—Snazel Snare.



A man is like a piano — most women can play them both.

Helen Flair.



You bring the ducks.

—John Cinclair.



A good columnist is generally supposed to have something to write before he writes it. However, there are exceptions. — Margaret Hearse.

CLUBS AT KATABAW

The clubs at Katabaw are somewhat idealistically quoted as the sustaining pillars of its social life, but they are, in reality, salty pillars, and crummy, and not at all intrinsically valuable.

Their number is appalling, rather than inspiring. At Katabaw one can have his intellect "broadened" in any subject from Latin to engineering, and there is a club for every field, to help him along, and see moreover, that he sweats in the procedure.

About once a month, at seven-thirty, there is a meeting, that flourishes with all the intensity and precision of a fire drill; at which coats are worn, carefully prepared (but inordinately dull) speeches are made, and coffee finally served, which partially succeeds in removing from the mouth the bad taste that has by this time most surely settled there.

There are vague attempts made toward the collection of dues, but as a general rule the membership merely looks decidedly uncomfortable, and half-way frightened whenever the subject is clandestinely mentioned. The dues are used chiefly to pay for the club's page in the school annual — a page notoriously dedicated to the florid and lugubrious advertising of purpose, plan, and accomplishment. Of course the purpose and plan never vary in starchily being blissful impossibilities, and the accomplishments are somehow marvelously lacking, but this is only a minor consideration, since the page is read by the club alone. They quite naturally realize that the write-up is merely last year's compliment, enthusiastically elaborated on by a partnership con-

sisting of their reporter and sponsor. (The reporter handled the pencil and looked mightily agreeable.)

The crowning achievement of every club is the annual picnic, a classical and isolated orgy which affords an enormity of indigestibles, and a rare opportunity for the less popular girls to shyly hold hands in the encouraging gloom of an expiring bonfire.

Among the more ambitious of these organizations are the sororities, local atrocities which strive constantly to appear vastly exclusive, and as constantly fail miserably in the attempt. They continually are on the outlook for favorable publicity, and when the college newspaper recognizes a signal venture with a distressing paucity of space they crimson with righteous indignation, and burn the editor in effigy. Their initiations are interesting examples of crude embarrassments and failing originality. Their parties are immensely lukewarm affairs, abounding in bridge, salads, and the latest gossip, vociferously punctuated with intermittent howlings whenever a "break" is made. And they politely snub each other during the beauty queen election, and brazenly insist on a re-count when their own mediocre candidate is hopelessly defeated.

There is no reason for a criticism of the clubs, however, beyond a bare citation of existent facts. If one did criticize them, they would merely yawn in gentlemanly condescension of ignorance personified, and then quite surely return to their normal condition of complacent oblivion and absolute self-sufficiency.

ADVERTISING



SOUTHLAND LUMBER COMPANY

"The Place To Buy Lumber"

DAVIDSON
CERTIFIED LUMBER
IS WORTH MORE

Willard McCracken, Mgr.

PHONE 35

Margaret C.: "Do you know that song,
'What Are Little Girls Made Of?'"

Red Harbin: "Is that last word 'of'?
Shucks, I thought all the time it was 'for'."

Hugh P.: "Dad, do you think they will ever
find a substitute for gasoline?"

Prof P.: "They have one now, son, and I
wish you'd give it a trial."

Hugh P.: "Huh? I've never heard of it.
What is it anyway?"

Prof P.: "Shoe leather".

Kingsville Building & Loan Association

Room 19, Flato Building

L. C. McROBERTS, Secretary
T. H. LAWRENCE, Jr., Agent

COMPLIMENTS

of

L. W. Adams

AGENT

THE TEXAS
COMPANY

The Staff

of

El Rancho
1934

Wishes to express its
appreciation to its
advertisers.

We thank you.

J. C. Penney Co., Inc.

Kingsville, Texas

Jean S.: "Isn't it strange that the length
of a man's arm is equal to the circumference
of a girl's waist?"

John G.: "Let's get a string and see."

COMPLIMENTS

of

TEX-MEX
NATURAL GAS
COMPANY

J. M. YOUNG, LOCAL MANAGER

This Is Your El Rancho

READ IT

This Is Your Bank

USE IT

ROBERT J. KLEBERG & COMPANY

BANKERS

UNINCORPORATED

PERRY BROS., INC.

KINGSVILLE, TEXAS

If it wasn't for the censor, we could
preach what we practice.

**CITY
DRUG STORE**

DRUGS
SCHOOL SUPPLIES
FOUNTAIN SERVICE
TOILET ARTICLES

Sterling Cage

COMPLIMENTS

of

**BROOKSHIRE
GROCERY**

Edwards Food Store

INC.

GROCERY, BAKERY,
AND MARKET

WE DELIVER

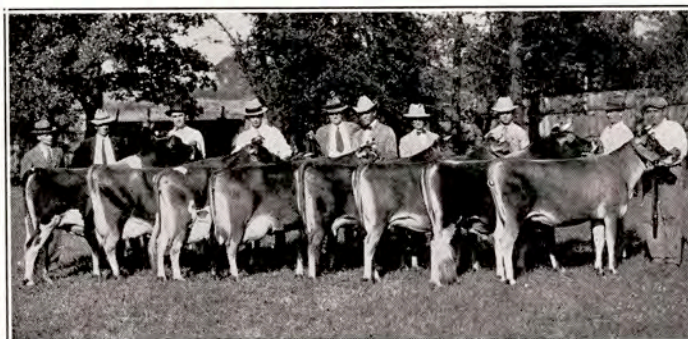
PHONE 196

Harold B.: "I've got a perfect news story."

Franklin R.: "How come? A man bite a
dog?"

Harold B.: "No, a bull threw a professor."

THE KING RANCH, with main entrance a ten-minute drive west from the College of Arts and Industries, embraces more than a million acres. Some 2,000 of these acres comprise the **Santa Gertrudis Jersey Farm** unit. Its large herd represents the highest type and most prepotent strains of the Jersey breed, and has won high recognition at the leading fairs and shows of the country. The Farm is considered one of the object lessons of South Texas, and has been visited by the world's leading Jersey breeders.



WE WELCOME students of the College of Arts & Industries interested in Animal Husbandry and Agriculture, for SANTA GERTRUDIS JERSEY FARM affords remarkable possibilities of a Field Laboratory in connection with these courses of college training. One of the purposes in operating the Farm is to contribute something in educational progress, and it is indeed a pleasure to have students and visitors to visit the Farm at any available opportunity.

Santa Gertrudis Jersey Farm

ESTATE OF ROBT. J. KLEBERG, Prop.

DR. J. K. NORTHWAY, MGR.

The King Ranch, Kingsville, Texas



PRESCRIPTIONS

JUST AS THE
DOCTOR ORDERED

HARREL DRUG CO.

Kingsville, Texas
COMPLETE DRUG SERVICE
THE REXALL STORE

Students . . .

E A T

KINGSVILLE

SWEET CREAM

BUTTER

DAIRY PRODUCTS
COMPANY

KINGSVILLE, TEXAS

Dot: Handsome men are always conceited.

Burton: Not always, I'm not.

WHILE WE WRITE ALL
KINDS OF INSURANCE,

the most valuable insurance you can possess is a college education. With compliments to the faculty and students of A. & I. College. We are your friends.

KINGSVILLE INSURANCE AGENCY

MARCUS PHILLIPS, MANAGER

DEVELOPING YOUR STATE *with* **ELECTRIC POWER**



Your State is constantly being developed through the extension of electric transmission lines and the amplification of electric service, which brings added dependability and a constant lowering of rates. As this expansion and development takes place, greater advantages accrue to its users in household comfort and convenience and in the development of

agriculture, commerce and industry.

Electricity has not yet disclosed all its mysteries, nor revealed the ends to which it may go in serving mankind. Still in its infancy, Electricity will repay richly the student of today for any study he may give this science, which is playing a major part in the development of your state and the country at large.

**CENTRAL POWER
AND
LIGHT COMPANY**

SERVING 186 COMMUNITIES IN SOUTH AND SOUTHWEST TEXAS

The
FIRST NATIONAL BANK
of KINGSVILLE

CAPITAL AND SURPLUS \$60,000



Students are invited to make use of our
Commercial Savings and Trust
Departments.

Pop May: There's two dollars missing
from my desk drawer and no one but you and
I have a key to it.

Bill Blair: Well, let's each put a dollar back
and forget it.

Kingsville Furniture
Company

Piggly Wiggly

(Compliments of the Poetry Club)

A cute little animal is the flea
You cannot tell the he from the she
But that don't bother the little flea
'Cause HE can tell the he from she.

EAT

-:- at -:-

White Kitchen Cafe

MRS. EVA FRENCH, MGR.

PHONE 117

KINGSVILLE

THE
CHAMBER OF COMMERCE
of
KINGSVILLE
CONGRATULATES

The A. & I. Student Body

ON THE

*Achievements of the Year
as Recorded by*

EL RANCHO

1934

You can get

MASTERPIECE

Tablets, Paper
and
School Supplies

at

THE TEXT BOOK ROOM

HINTS TO CO-EDS ON DATE

Don't ask him what he thinks of your roommate. He probably has his own ideas on that subject and doesn't want to defame a girl's character anyhow.

Don't tell him that the girls at the house don't understand you. He doesn't either and doesn't care.

Don't make cracks about his driving. Remember, he isn't driving because he wants to.

If and when he parks, take off your hat. It will facilitate matters.

Don't plaster up with lip-stick before the fight. No matter how kiss-proof it may be, it will still come off on his shirt. The shirt probably isn't his anyhow.

If he takes a shot, don't go into a long-winded discussion of what it did to a friend of yours. He probably needs it if he's out with you.

Don't make him do all the work. A little encouragement will go a long way toward another date.

And, above all, DON'T.

TO THE OLD STUDENTS:

We extend our thanks for your patronage, which we have tried to merit . . . Since the beginning of the COLLEGE we have been the staunch friend and loyal supporter of the Student Body and Faculty . . . we have done our utmost to be of real service.

TO THE NEW STUDENTS:

We bid you welcome and extend a cordial invitation to visit our store . . . an INSTITUTION built upon thirty years of fair dealing and faithful service . . . the most modernly equipped HARDWARE STORE and LUMBER YARD in South Texas.

The Kingsville Lumber Company

HOME OF THE RUNNING  SADDLE SHOP

QUALITY GOODS — PROMPT SERVICE — RIGHT PRICES.

PHONE 600



KINGSVILLE PUBLISHING CO.

*The Home of Quality Printing
In South Texas*

ADVICE TO FRESHMEN

Ask a girl to talk
 if she's talkative
Ask a girl to walk
 if she's walkative
Ask a girl to ride
 it's permissible
But never ask to kiss her
 if she's kissable.

TEMPUS FUGIT

On nights in spring it's the thing
 Your morals to ignore.
Though time is vast, you must be fast—
 The sun comes out at four.

Johnny: You've a faculty for making
love.

Liz: Oh, no, only a student body.

**Maurice W. Marston
Lumber Co.**

"HOME FOLKS"

Auto Glass, Wall Paper
Paints

PHONE 29

KINGTON STUDIO

PORTRAITS OF DISTINCTION

PHOTO FINISHING

COMMERCIAL PHOTOGRAPHY

EIGHT-HOUR SERVICE

KINGSVILLE'S LARGEST DEPARTMENT STORE

To the Old Students of A. & I.:

WE EXTEND OUR THANKS FOR YOUR PATRONAGE, WHICH WE HAVE TRIED TO MERIT. THROUGH THE YEARS IN WHICH WE HAVE BEEN THE FRIEND AND LOYAL SUPPORTER OF THE STUDENT BODY AND FACULTY OF THE COLLEGE, WE HAVE DONE OUR UTMOST TO GIVE THE BEST OF SERVICE.

To the New Students of A. & I.:

WE EXTEND A WELCOME AND A CORDIAL INVITATION TO CONSULT WITH US IN ALL MATTERS CONCERNING QUALITY CLOTHES. YOU WILL FIND US READY TO GO BEYOND THE USUAL LIMITS OF SERVICE IN OUR DESIRE TO PLEASE YOU.

Raglands
DEPARTMENT STORE

"The Home of Quality"

*Complete Lines of Men's and Women's
Clothing, Hats and Shoes*

Coronation of Lantana Queen

COLLEGE FORUM, APRIL 14, 1934

Court of the Year

HER MAJESTY, THE QUEEN HAZEL HAIRE
 His Excellency, the Chancellor John Harris
 Maid to Her Majesty
 Marie Robbins and Evelyn Adams
 Crownbearer Jimmy McCulley
 Trainbearers Jo Ann Wright and Betty Robinson

Lantana Ladies

LENA DAVIS
 Ladies in Waiting Jane Lacy
 Ann Lutembacher
 JEAN SINCLAIR
 Ladies in Waiting Patricia Elliot
 Jerry Maxwell

Program

Dance Dorothy Landrum
 Bull Fight Stephen F. Austin Ward School
 Serenade To Her Majesty Tilghman Harbin,
 Bob Ferguson,
 J. E. Turner,
 T. L. Arthur
 Tango Jean and John R. Thomas
 Trumpeter A. C. Agan
 Music Fred Gardner's Orchestra

Club Representatives

Nancy Kenny Delta Theta
 Margaret Cubage Footlight Club
 Rena Campbell Baptist Students' Union
 Grace Moos Business Administration
 Rachael Paulson Pre-Med Club
 Olene Sims Aggie Club
 Dora Dietz Alpha Chi
 Alece Bentley Beta Gamma
 Minnie Lee Manry Girls' Glee Club
 Irma Longorio Amado Nervo
 Lucylle Parrish Press Club
 Ramona Baldrige Engineers
 Hattie Lorenz English Club
 Maydean Pratt El Rancho
 Maurine Yarborough Men's Glee Club
 Margaret Nance South Texan
 Mary Pearl Burnett Alpha Sigma
 Ellyce Morgan History Club
 Elizabeth Salyer Alpha Tau Alpha
 Elva Clampitt A Cappella Choir
 Leona Sims Lambda Chi



ECHOLS
Red & White Store

PHONE 742

KINGSVILLE

TEXAS

Allen
FURNITURE Co.
 CORPUS CHRISTI - KINGSVILLE

KINGSVILLE

FUNERAL DIRECTORS

AMBULANCE SERVICE

"Serving the People of South Texas
 For More Than a Quarter of
 a Century."



MRS. MAY H. DICKENS
Sophisticated Lady

Like many funeral orations, most tributes are necessarily obvious and insincere absurdities, in that there is more satisfaction than soul in gross exaggeration. Necessity will compel no exaggeration here; in fact, we of the Annual staff merely intend to tell the truth — and save time.

Frankly, we consider Mrs. Dickens delightfully sophisticated, probably due to the fact that we find it quite impossible to overlook the tolerant cynicism in her smile, and the good-natured devil lurking in her eyes.

She is a rare and broadminded individualist, who can with equal delicacy, adequacy, and good taste harangue an audience of five thousand, or rail at you over a tea cup. She finds life entirely interesting because she glories in activity, but she has never allowed contentment to hinder achievement. In the years devoted to broad and intelligent study she has found time to rear two children, and instill into their characters her own enviable traits. She can look upon a lifetime, and feel that there are no regrets. Years have only increased her charm.

An orchid to you, Mrs. Dickens — an orchid to the deserving. We could not hail you otherwise than "Sophisticated Lady".

T H R E E D A Y S

Sarita wore a scarlet band
 Around her dusky, tangled braid.
She played below the fringed mesquite
She crunched its beans beneath her feet,
 And flowers brushed her as she played.

Sarita's dress was organdy,
 Its ruffles like a petaled bloom.
A lace mantilla edged her hair,
Wing black lights still lingered there
 Where honeysuckle dripped perfume.

Sarita's step was deft and slow;
 A holy peace was in her eyes.
Broodingly they came to rest
Upon the babe against her breast,
 And lingered there—Madonna-wise.

This poem, by Alice Sullivan, won first place in the poetry division of the contests sponsored by the Texas Intercollegiate Press Association convention, held in Abilene April 26, 27, and 28. First place was also won in serious short story with "Sand" by Margaret Nance.

Other places taken by A. & I. included: Second place, one act play, "Pelf" by Mrs. Nell Bartlett; third place, advertisement, Cliff McCall; fourth places, El Rancho 1933, Garland Capel, editor; formal essay, "The Art of Questioning" by Lucyle Parrish; news story and sports story, Franklin Reed.

Autographs

Autographs



HERE you see the faces of some of the editors, managers, and sponsors over four states with whom we have worked this year.

WE have enjoyed our association with them and believe they will all recommend SOUTHWESTERN superior service and PRINT TESTED plates.



SOUTHWESTERN ENGRAVING COMPANY
 DESIGNERS AND ENGRAVERS OF DISTINCTIVE YEAR BOOKS
 FORT WORTH, TEXAS





