

# El Rancho

















El Rancho  
1942







DORA HAGER

*Editor-in-Chief*

BESS HAL YAKEY

*Associate Editor*

W. B. WILLIS

*Business Manager*





★  
★  
1942  
*El Rancho* ★  
★





# Foreword

With the aim of promoting the idea of unity among the Americas, the 1942 El Rancho presents a picture story of events at Texas A&I.

Because this college is nearer to the Latin-American nations than any other in the United States we constantly strive for a better understanding and greater friendship among the peoples of the Western Hemisphere.

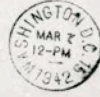




COLLEGE



MEXICAN EMBASSY  
2829-16TH ST., N. W.  
WASHINGTON, D. C.



Miss Dora Hager,

"The 1942 El Rancho",

KINGSVILLE, Texas.

EMBAJADA DE MEXICO

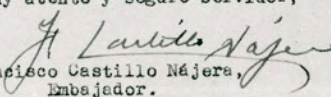
Washington, D. C.,  
6 de marzo de 1942.

Señorita Dora Hager,  
"The 1942 El Rancho",  
Kingsville, Texas.

Estimada señorita Hager:

Me es grato enviar a usted, a los profesores y alumnos del Colegio de Artes e Industrias, de esa ciudad, mis calurosas felicitaciones por la forma efectiva en que fomentan la amistad y el acercamiento entre los habitantes de nuestro Continente, particularmente entre los pueblos de México y de Estados Unidos.

Soy de usted muy atento y seguro servidor,

  
Francisco Castillo Nájera,  
Embajador.

A & I Beauty

Always friendly, entirely natural—the sort of girl people like to think of as being typically American, that's Margaret.



*Lantana Queen*

**MARGARET WILLIAMS**











Come with us . . . . .

For a visit around A&I campus where there's a lot to do that's well worth the doing—see our students at work and play and the modern facilities available.





# DORMITORY LIFE . . . . .



## SEALE HALL

Capable of housing 100 men is conveniently near the Administration and Science Buildings and the classes held in them.



The office, where a call is being received.  
A student's work is never done.



Where a spirit of Democracy is fostered . . .

## COUSINS HALL

Its reception room at the Christmas Season with residents and visitors grouped around the Social Director.



One way of spending a pleasant afternoon.



Northeast view of Cousins Hall for girls.







CLASSROOM ACTIVITIES . . .



# Learning to do by doing . . .

## THE ADMINISTRATION BUILDING

Turns its back on four palms and the dark shadow of the open air Forum where Assemblies are held.

## THE PAVILION

Looks out on one wing of the Science Building with the Javelina Gymnasium in the distance.



*Learning photography seems to be absorbing business, at least HAZEL GLASCOCK, BETTY SUE ROSAMOND, TOMMY DEAN and FRANCIS DALEY look interested. Maybe MAURICE TAYLOR and MAX AMANN are watching the Engineers survey. EARLINE BOOTHMAN, LOUISE BURSON and HELEN CASON appear determined to become competent secretaries.*





# HERE AND THERE . . .



An open door, brilliant sunshine  
and a co-ed make this library  
silhouette.





Soft, white clouds looked down on rooftops and treetops that day.

The Science Building faces a wide lawn, palm trees and broad Santa Gertrudis Street.



Two students stop to talk before the main door of the Administration Building, framed in a banana tree setting.







Cousins Hall's west entrance presents a vine-covered wall and a hospitable appearance.

The brightly lighted main corridor of the Administration Building and its museum cases.







ADMINISTRATION





EL PRESIDENTE  
REPUBLICA DE GUATEMALA  
AMERICA CENTRAL

El impulso y apoyo a las artes e industrias, a que consagra sus labores el Colegio de Texas dedicado a ellas, es una de las constantes preocupaciones y objetivos fundamentales del Gobierno que presido. Personalmente, creo que todo esfuerzo en pro de realizaciones materiales y culturales fortifican el alma y la economía de estos países, vigorizándolas cada vez, para que con individualidades cada vez más educadas y fuertes contribuyan eficazmente a la gran obra de la solidaridad continental en la América democrática y libre.

*Lorraine*

## A&I Beauty

Lorraine possesses a dark-eyed charm and winsome beauty that merits and receives the admiration of all who know her.



*Lantana Lady*

LORRAINE VOLLMER





# BOARD OF DIRECTORS



Members of the Board as it was constituted when this picture was taken November 15 read from left to right, as follows:

MORRIS ROBERTS, *Victoria*

H. E. BUTTS, *Corpus Christi*

ROBERT C. ECKHARDT, *Kingsville*

FRANK C. SMITH, *Houston*



JUDGE JAMES R. DOUGHERTY, *Beeville*

MRS. FRANK MORTON LEWIS, *San Antonio*

ROBERT H. KERN, *Mercedes*

SAM FORE, JR., *Floresville*

Those members not shown are:

W. H. GRIFFITH, *Sinton*

HOLMAN CARTWRIGHT, *Dinero*





# PRESIDENT NIERMAN



Dr. J. L. Nierman, acting president of A&I, began his service in that capacity immediately following the resignation of President J. O. Loftin last August. Taking up without delay the difficult work of a college executive, Dr. Nierman has directed a year of progress, devoting his valuable time and talent to the administration of A&I, while continuing as head of the Department of Chemistry.

He has handled every situation with utmost skill and tact, inspiring the confidence and gaining the friendship of all who knew and worked with him.

As head of A&I during the past ten months, Dr. Nierman has proved that he is not only a scholar, a gentleman, and a distinguished personality, but also an executive of great ability.





Dean of the College



Registrar



Dean of Women

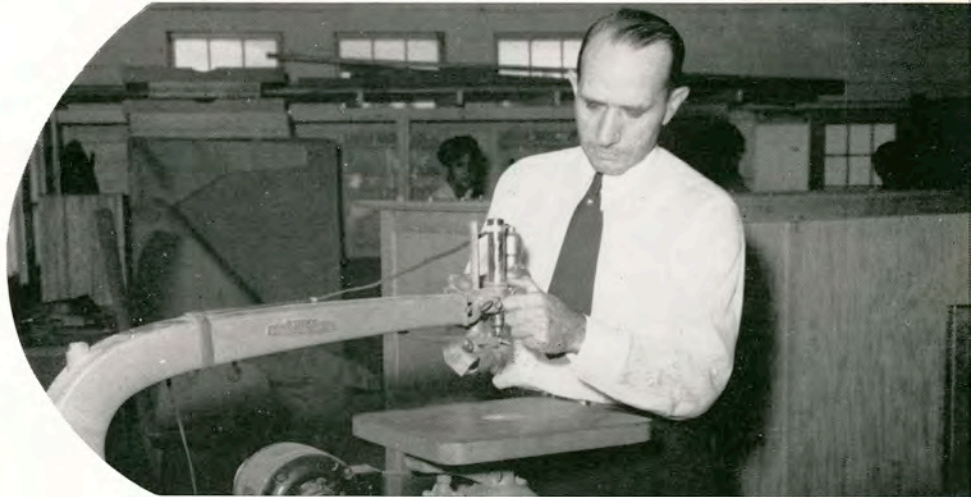


Chairman of Graduate Council





Dean of Students



Business Manager



Administrative Assistants





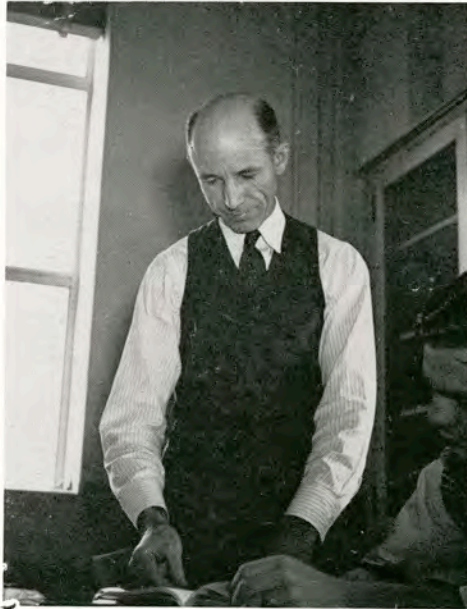
# Informal Shots of Our Faculty



RUSSELL J. COOK, head of the Agriculture department, and JOE C. BROWN have things to talk over.



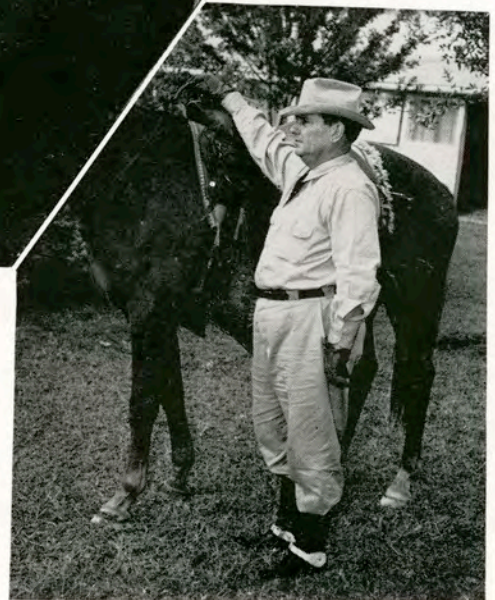
S. V. BURKS and his shadow went golfing one day.



C. K. FRASER tells a student how it's done.



H. W. GIST is a new addition to the Ag department, coming after mid-term.



DR. J. K. NORTHWAY and the headless horse.



# Our Faculty in an Informal Manner

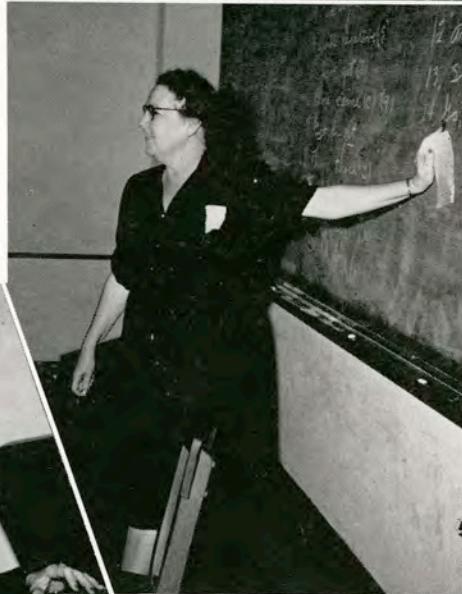
DR. J. DEWITT DAVIS, *Education department head, seems to find the manuscript interesting, but perplexing.*



DR. H. W. ANDERSEN *names gardening as a hobby and proves it.*



MAMIE BROWN *enjoys her teaching and so do her pupils!*



GEORGIA W. BERGERON *with some of her beautiful silver and an old treasured book.*



VILA B. HUNT *might be working out a new method of teaching.*



# Informal Shots of Our Faculty . . .



DR. W. A. FRANCIS, department head, finds reading interesting among other things.



FRANCIS ALEXANDER, poet and professor, scans a page.



PAULINE W. JESTER knits for the Red Cross quite a lot.

O. M. MONTGOMERY appears to be temporarily becalmed.



JENNIE L. SPLAWN has just looked up from her book.



DR. ROBERT RHODE seems to be watching closely—quite closely.





# Our Faculty in an Informal Manner . . .



R. L. PEURIFOY works for the government now but he was Engineering department head.



W. M. RICHTMANN is caught in the act of catching the act.



DR. A. W. STRAITON is about to throw the switch in the science building. He is head of the department now.

DR. F. H. DOTTERWEICH would definitely not want to miss that shot.

C. E. KOLODZEY looks composed about the whole thing.

NOEL C. MCGUIRE takes this business of having his picture made seriously.





# Informal Shots of Our Faculty . . .



PAUL M. (*Poppy*) RILEY,  
*Fine Arts head, stops to*  
*light up his pipe.*



THEOPHIL VOEKS *takes*  
*great pride in his son.*



ERWIN ERNST *has a*  
*cup of coffee.*

L. J. LIEGL *is his*  
*companion.*



FLORENCE VANDER-  
WICKEN *sits down to*  
*play.*



ROBERT SCANLAND  
*seems in a mood of*  
*deep thought.*



# Our Faculty in an Informal Manner . . .



MILDRED PECAUT, of the Dramatic Art department, makes an entrance.



CHARLOTTE BAKER, artist and author, is doubly talented.



L. E. BROWN finds developing an

interesting phase of photography.



DR. J. C. CROSS and S. W. BASS have a good laugh about it.



NEAL CLARKSON beams about something, reason undisclosed.





L. F. CONNELL heads the Economics department and relaxes at golf.

SARAH LOIS GRIME teaches geography; see the atlas.



EDITH COUSINS pauses on the bench in front of the Ad. building.

Although JIM E. REESE's hobby is guns he poses peacefully behind his desk.

JOE E. BROWN concentrating on a fore-hand drive





*B. B. A. department head DR. J. R. MANNING,  
just before his evening bicycle ride.*



*GEORGE W. McCULLEY  
plays a sweet and hot trom-  
bone.*



*BERNICE ROLF gets ready  
to take a few shots with  
her candid camera.*

*MAURICE W. YOUNG proves  
a problem to his classes.*



*What's cooking? PAUL  
COOPER tests the brine.*





# Informal Shots of Our Faculty . . .



*Hold it, HUGH PORTER, smile, okay!*



*ELIZABETH ANN OLIPHANT working a hard math problem.*



*DR. E. C. KENNEDY in the middle of a trigonometry problem.*

*COACH A. Y. (BUD) MCCALLUM waiting for his team to come out for workout.*

*MRS. DON ALEXANDER demonstrates the proper way of dressing an injured foot.*

*CAL JEWETT on his way to class, stops for the cameraman.*





# Our Faculty in an Informal Manner



BETTY LOVE RUGELEY gracefully returning a serve in a close badminton game.



Head of the Language Department, JEFF D. SMITH stops reading long enough for this picture.



MRS. PAULINE L. GCODE conducts a class in conversational Spanish.

AMINTA GONZALES reading a novel on Spanish drama.

MATTIE B. MCLEOD studying Latin grammar or some mythological story.

DR. J. C. CROSS reads a first edition of his new book on biology of South Texas.







JOHN F. SINCLAIR *inspecting his collection of leaves of native plants.*



E. R. BOGUSCH *microscopically studying bugs.*

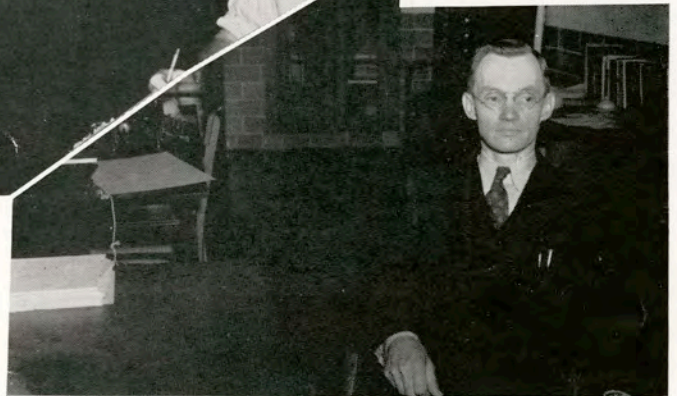


DR. J. L. NIERMAN, *Chemistry head, at his desk.*



V. F. MICHAEL *supervising a chemistry student.*

DWIGHT N. GARRISON *taken not at his hobby, which is plastics.*





J. E. CONNER and his hobby of historically interesting objects.



LOUIS J. SMITH and some of his handiwork or rather woodwork.



DR. J. A. RICKARD and a product of his orchard.



MAY H. DICKENS taken on her lawn enjoying South Texas sunshine.



ED D. PARSONS with some Chemistry lab equipment running tests.



# Informal Shots of Our Faculty



ALINE MCKENZIE, at her hobby, painting during her time off from Home Economics head.



FAYE BIBLE watches a student weave a scarf.



CLARA MAST just before reading a book.

AGNES H. OFTEDAL standing before a window in her attractive office.



ANN L. KIRVEN is head librarian. She is looking over a list of new books.



VIRGINIA KEMP, minute assistant librarian, helps students with reference work.





# Our Faculty in an Informal Manner



CARRIE ALLEN, Assistant Librarian, cheerfully helps students find books and magazines from early morning on through the day.



ANNIE LEE LITTLEJOHN, social director of Cousins Hall, has flowers as her hobby and a successful one seemingly.



GREGG HILL, student manager of Seale Hall, keeps office for the boys.

BESS (MOM) WHITE, food supervisor for the dormitories, gathers flowers for a banquet table.

P. D. TURNER, head of the Maintenance department, pauses from his many and varied duties.

IDA MAE CROZIER is secretary of the Agriculture department.







Endeavoring to promote a spirit of loyalty and interest in the college, the 1941-42 Student Council has had as its aim the establishment of goodwill and mutual understanding between the students and faculty of the college through more assembly programs. Six members of the Council attended a convention of the Texas Student Government Association in San Antonio on March 27-28.

MAX AMANN, *President*  
 ROSCOE MARIS, *Vice-President Fall*  
 DICK NEVILL, *Vice-President Spring*  
 C. A. DAVIS, *Secretary-Treasurer*  
 MYRTLE WOLFSSOHL, *The South Texan*  
 DORA HAGER, *El Rancho*  
 JOHN BARKLEY, *Yell Leader*  
 TUGER HALL, *Senior Representative Fall*  
 J. R. HARRISON, *Senior Representative Spring*  
 JACK GERDES, *Junior Representative*  
 NANCY HOUSE, *Sophomore Representative*  
 JOE CAGE, *Freshman Representative*  
 WARREN ARNOLD, *Athletic Representative Fall*  
 ROBERT JONES, *Athletic Representative Fall*  
 SAM HAWKES, *Athletic Representative Spring*  
 MELVIN BEAR, *Athletic Representative Spring*

On April 21 the student body elected officers for the 1942-43 school year. They are: C. A. DAVIS, *President*; HOWARD POND, *Vice-President*; PAULINE ANDERSON, *Secretary-Treasurer*; JOHN DIETZ, *Yell Leader*; BESS HAL YAKEY, *Editor of El Rancho*; BILL HOLMES, *Editor of The South Texan*.







CLASSES



REPUBLICA DE PANAMA  
PRESIDENCIA

Panamá, 23 de Enero de 1942.

Srta. Dora Hager,  
Editora de "THE 1942 EL RANCHO" (Yearbook of the  
Texas College of Arts and Industries),  
Kingsville, Texas, EE.UU.

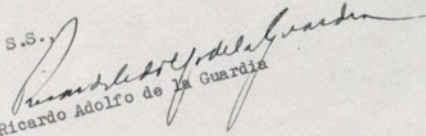
Estimada señorita:

La labor panamericanista en que el "Texas College of Arts and Industries", de Kingsville, Texas, está empeñado, según me informa Ud. en su amable carta del 15 de Diciembre próximo pasado, es una magnífica demostración de sincera cooperación a la noble política de unión americana preconizada por el ilustre Presidente de ese país, Franklin Delano Roosevelt, quien ha conquistado un lugar privilegiado en el corazón de todos los hombres de buena voluntad.

Me es muy grato hacerles presente, por su digno conducto, a los miembros del "Texas College of Arts and Industries", mi complacencia por su feliz iniciativa y mis entusiastas congratulaciones.

He dado instrucciones a mi Secretario Privado para que envíe a Ud. la fotografía que solicita.

Su muy atento y S.S.

  
Ricardo Adolfo de la Guardia

em.

A&I Beauty

Lillian is the girl with the golden hair who loves blue and is just as true as the color she chooses as her favorite.



*Lantana Lady*

LILLIAN LEE



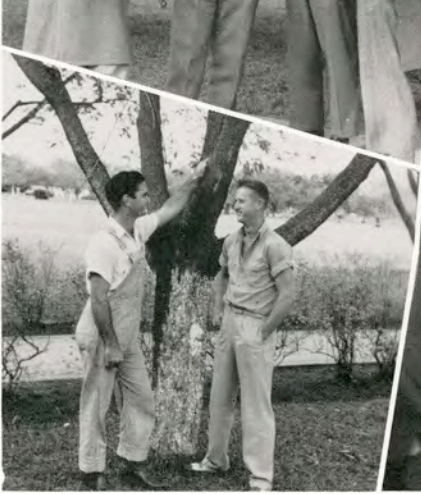








SENIORS





## Class of 1942

### AMANN, MAX, *Poteet*

Aggie Club '38-42; FFA Club '40-'42; President Student Council '41-'42.

### APPLEWHITE, KATHRYN, *Corpus Christi*

Delta Sigma Nu, President '42, Representative to Lantana Court, '42; B.S.U. '40-42, Vice-President.

### BEASLEY, ANNIE MARY, *Beeville*

Delta Theta; History Club; Cousins Hall House Council.

### BELL, J. T., *San Antonio*

Aggie Club '38-42, Vice-President; F.F.A. '40-42; Manager College Dairy; Who's Who '41-42.

### BELYEU, GEORGIA, *Lockney*

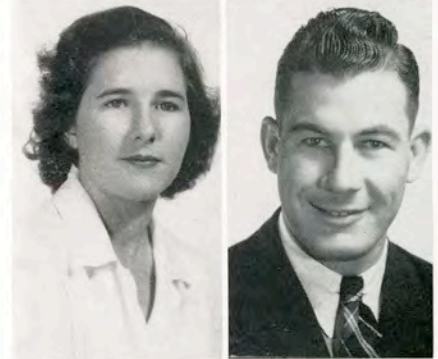
Dora K. Cousins Club '39-42; Pi Kappa Epsilon '38-42; Alpha Chi '40-42; Who's Who '42.

### BENDELE, BONNIE SCHROEDER, *Banquete*

### BLAHUTA, L. V., *Robstown*

### BLUNTZER, KATHRYN ANN, *Corpus Christi*

Beta Gamma Sorority '39-'42; Lantana Lady '39-'40; Delta Sigma Chi Sweetheart '40-'41, '42.



The seniors bask in the sun on the steps of the science building after a class meeting.







## Class of 1942

CARILLO, CONRAD G., *Benavides*

Aggie Club '38-'42.

CHESNUTT, JOHN W., *Kenedy*

B.B.A. Club; Hayes Club '38-'39; Band '38-'42.

COOK, HAROLD, JR., *Kingsville*

Band '38-42, President '40-42;  
Alpha Chi '40-41; Engineers Club '38-42; N.G.E.A. '40-42.

DOWGIELLO, ALFRED, *Gary, Ind.*

Varsity football '40-'41; Chemistry Round Table; T Association.

EEDS, EDWARD, *Beeville*

T Association '39-42; Varsity Golf Team '39-42.

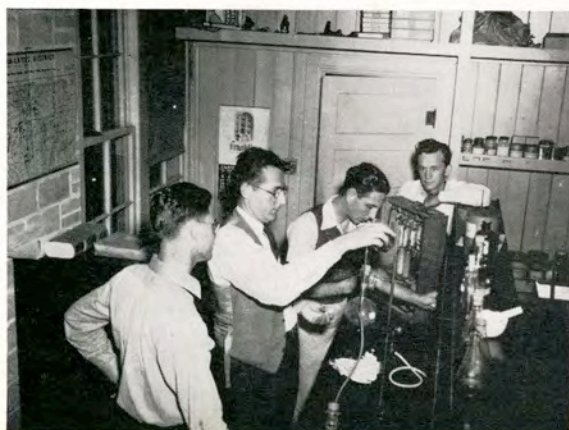
ESTLINBAUM, RAY, E., *Eagle Lake*

Engineers Club '38-'42

FEATHERLING, M. EILEEN, *Sinton*

FELS, ELLINOR, *Kingsville*

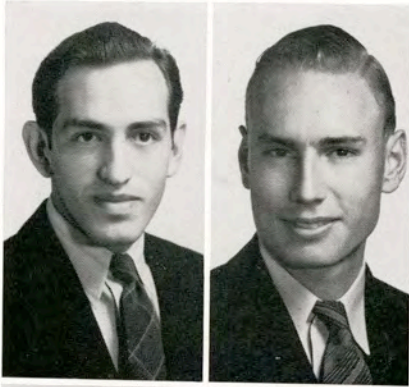
W.S.A. '38-40; Home Economics Club '41-42.



*Dr. Dotterweich shows the NGEA boys just how it's all done.*



## Class of 1942

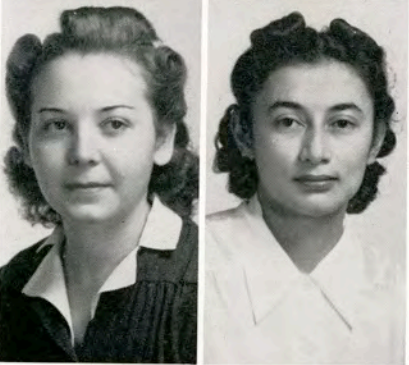


FLORES, SANTOS, *Raymondville*

Spanish Club '38-'41; Aggie Club  
'38; Intramural Sports '38-'40.

FORD, SIDNEY, *Karnes City*

Aggie Club '38-'42; F.F.A. Club '40-'42



GABBERT, VIVIAN, *Corpus Christi*

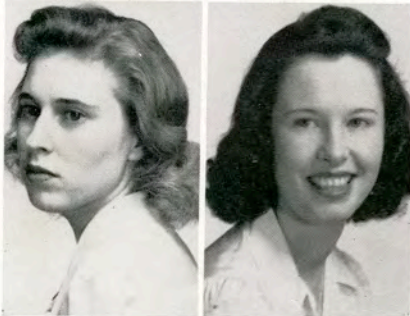
GALAVIZ, HILDA, *Del Rio*



GARZA, GILBERTO ALFONSO, *Edinburg*

Aggie Club '38-'42; F.F.A. '40-'42;  
Amado Nervo '38-'42.

GARZA, RODOLFO, *Mission*



GERRY, KATHRYN, *Weslaco*

Pi Kappa Epsilon '41-'42; Interna-  
tional Relations Club '41-'42.

GIBBS, VALMIA, *Kingsville*

Delta Theta Sorority '39-'42; Press  
Club '41.





## Class of 1942

### GLASCOCK, HAZEL, *Kingsville*

Kappa Omicron Phi; Home Economics Club; W.S.A.



### GOEHRING, EMILY, *Runge*

Home Economics Club, President '41; Kappa Omicron Phi, President '40-41; Alpha Chi '40-42; Who's Who '41-42.



### GONZALES, AMELIA, *Benavides*

### HAFER, JOYCE, *Driscoll*

Delta Sigma Nu '38-42; W.S.A. '38-40; Sweetheart N.G.E.A. '42; Kappa Zeta Sorority '42.



### HAGER, DORA, *Mercedes*

Who's Who '41-'42; Press Club '40-'42, Sweetheart '42; Band '38-'41; Student Council '41-'42; Beta Gamma '38-42.

### HAYSLEY, CLAUDE C., *Taft*

Kappa Sigma Nu '40-'42; Male Chorus '39-'42; I.R.C. '40.



### HARRIS, MARGARETTE, *Corpus Christi*

H.E. Club

### HARRISON, J. R., *Freer*

Alpha Chi '40-41; N.G.E.A. '40-42; Student Council '42; Associate Sports Editor, South Texan '39-40.



*This appears to be a two-man bull session of extreme seriousness.*

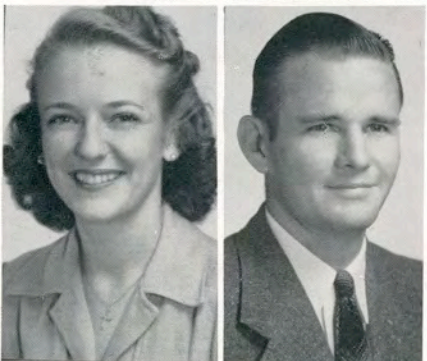


## Class of 1942



HART, WILLIE GRACE, *Edna*

HARTLEY, COMEL, *Blooming Grove*  
B.B.A. Club '40-'42.



HARWOOD, NELL, *Port Lavaca*

Delta Theta Sorority '39-'42; Home  
Economics Club '38-'42; Cousins  
Hall House Council '39-'41.

HAWKES, SAMMY, *Sabinal*  
Football '38-'41; Student Council '42.



HELLER, W. L., *Alvin*  
Aggie Club

HIESERMANN, WINNIE MARIE, *San Juan*

Kappa Zeta Sorority, Recording Secretary  
'41-'42; B.B.A. '40-'42; W.S.A. '40-'42;  
Campus Choir '41.



HOLLAND, MRS. ESTELA C., *Donna*  
Pi Kappa Epsilon; Amado Nervo.

HOLLEY, LOUISE, *La Feria*  
A Cappella Choir '41-'42; President '42;  
Sweetheart of Male Chorus '41-'42.





## Class of 1942

JARRELL, JACK, *Bishop*

JENSEN, RUSSELL W., *Austin*

Alpha Chi '41-'42; T Association '40-'42;  
All Alamo Conference '40.

JESTER, ELIZABETH, *Kingsville*

KELLER, MARY, *Devine*

Kappa Omicron Phi '40-42, Coronation  
Rep.; Delta Sigma Nu '39-42; Presi-  
dent Cousins Hall House Council, '40-  
42, Coronation Representative.

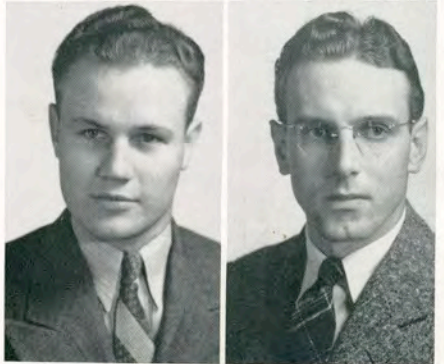
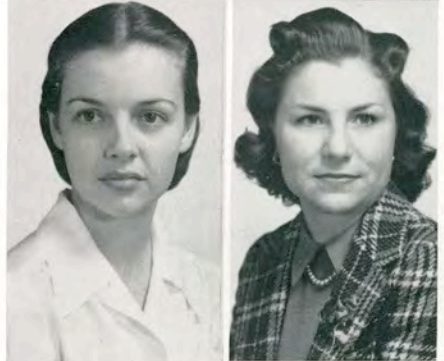
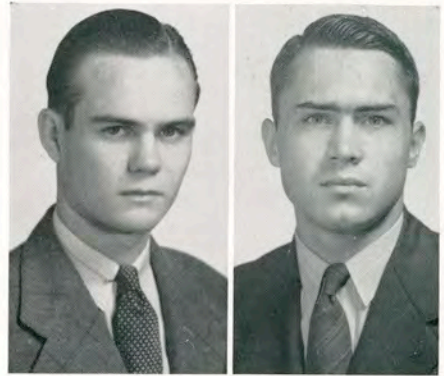
KRUSE, OLAN, *Bishop*

KULCHAK, CLARENCE, *Alice*

KUYKENDALL, E. C., *Tilden*

Engineers Club '38-42; Intramural  
Coach '41-42; N.G.E.A. '40-42.

LANDERS, RUFUS, *Bedias*



*When good Aggies get together there  
is usually a lot to be said.*



## Class of 1942



LAURSON, FRANCES, *La Feria*

Sketch Club; English Club.

LONGORIA, ESMERALDA, *Kingsville*

Amado Nervo; Hayes Club; Intramural Volley Ball.

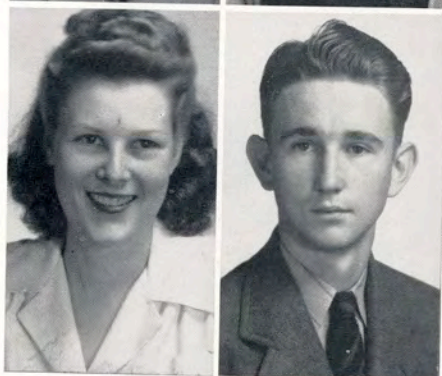


MARIS, ROSCOE, *McAllen*

T Association; Vice-Pres. Student Council '41-'42; Who's Who '41-'42; B.B.A. Club.

MARSTERS, LELAND, *Kingsville*

Aggie Club '38-41; Footlight Club '39-41, Sergeant at Arms; History Club '40-42.



MARTIN, ANNETTE, *Cotulla*

Alpha Sigma Sorority.

MARTIN, SAM, *Garwood*



MENDEZ, ELIDA, *Kingsville*

MERTENS, HOYT, *Kingsville*

Band '38-42; Engineers Club '40-42.





## Class of 1942

MILLER, JOYCE, *Navidad*

MOONEY, VANDIVER, *El Campo*  
N.G.E.A. '41-42, President; Alpha Chi  
'40-42, Sergeant at Arms.

MORRIS, FRED, *Chicago, Ill.*

MUMME, AGNES ANN FUCHS, *Los Angeles*  
H. E. Club '38; History Club '40.

MCADA, GRACE, *Campbellton*

Kappa Zeta Sorority Corresponding  
Secretary '42; Delta Sigma Nu '40-  
42; W.S.A. '39-40; A.W.S. '41-42.

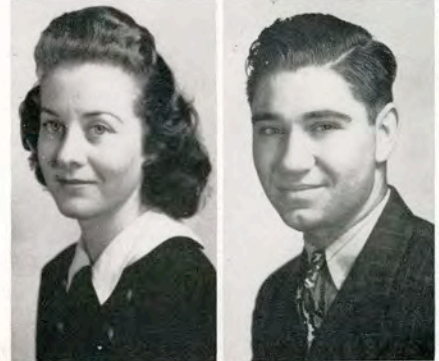
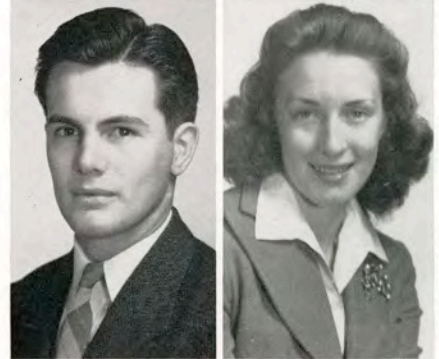
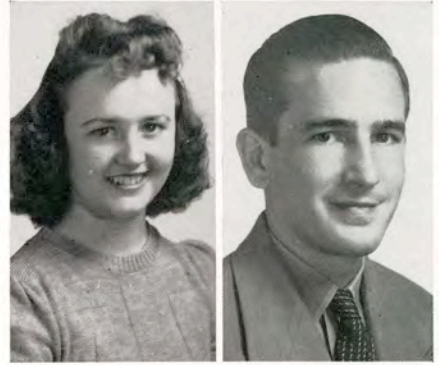
MCCASKILL, HAROLD R., *Gonzales*

MCCURDY, VIRGINIA, *Kingsville*

A Cappella Choir '39-'42; B.B.A.  
Club, Reporter '41-42; A.W.S. Sen-  
ate Member; Kappa Zeta Sorority,  
President '41-42.

MCNEIL, JOSEPHINE, *Mercedes*

Beta Gamma Sorority '41-42; Interna-  
tional Relations Club '41-42; President;  
Baptist Student Union '41-42; Cousins  
Hall Council '41-42.



*Piddle and Ruth caught coming out of the south entrance of the science building.*



## Class of 1942



McROBERTS, VIRGINIA RUTH, *Kingsville*

Alpha Chi '40-'42; Who's Who '42;  
Delta Theta Sorority; A Cappella  
Choir.

NEVILL, RICHARD, *Dallas*



PENA, AMELIA, *Alice*

PEREZ, IRMA MINERVA, *Alice*



RAMIREZ, ESTELLA, *San Diego*

RHEA, STERLING, *Beeville*

B.S.U. '38-'42 Pres. '41-'42; Alpha Chi  
'40-'41, Pres. '41-'42; Band '39-'42.



RHODES, RAY, *Corpus Christi*

B.B.A. Club

RICHARDS, MARY FRANCIS, *Driscoll*





## Class of 1942

ROSAMOND, BETTY SUE, *Driscoll*

Home Economics Club '38-42;  
Kappa Zeta '41-42, Vice-president.

RUSSELL, J. T., *Kingsville*

Aggie Club; F.F.A. Club; Athletic Director Aggie Club.

SALINAS, FRANCES, *Raymondville*

SASSE, RAY, *San Antonio*

SAUNDERS, MARY, *Kingsville*

SAWEY, ORLAN L., *Sabinal*

Male Chorus '38-'41; Alpha Chi '40-'42;  
Dora K. Cousins English Club '40-'42,  
President '41.

SEIFERT, HENRIETTA, *Runge*

SHOEMAKER, ROBERT V., *Santa Rosa*

Engineers Club '38-41; N.G.E.A., Vice-President '42.



*A few of the seniors waiting for class meeting to get under way.*



## Class of 1942

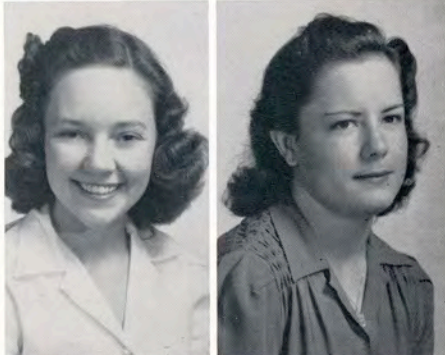


SHULTS, EULA LEE, *Kingsville*

Sketch Club '40-'42.

SIMONS, JEWEL MARGARET, *Kingsville*

W.S.A.; A.W.S.; Home Ec. Club



SIMS, WILLIE BESS, *Sinton*

Home Ec. Club; Delta Theta Sorority

SPEARS, FLORENCE, *San Benito*

Alpha Chi; B.B.A.; W.S.A.; Cousins Hall  
Council.



SPENCE, CAROLYN JOSEPHINE, *Kingsville*

Campus Choir '40-'41.

SPENCER, MRS. LOIS C., *Texarkana*

Delta Sigma Nu '40-42; A.W.S. '41-42.



STAGGS, DORIS, *Hebbronville*

Sweetheart Kappa Sigma Nu;  
Footlight Club; Delta Theta; Sketch  
Club.

STOKER, MARJORYE JEWELL, *Corpus Christi*





## Class of 1942

TAYLOR, LOUIS W., *Floresville*

TERRY, RAY S., *Sour Lake*

B.B.A. Club '41-42; T Association '41-42; Student Mgr. Javelinas '39-40; Trainer Javelinas '41-42.

TILLY, MRS. SARAH D., *Kingsville*

R. J. Kleberg History Club '40-41; Delta Sigma Nu '41-42; W.S.A. '41-'42.

TOWNS, ALBERT, *Belmont*

TRIBBEY, ROY J., *Vanderbilt*

TURNER, ELIZABETH A., *Donna*

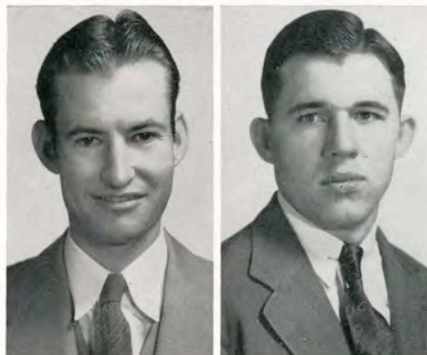
Pi Kappa Epsilon '41-42; History Club '40-41; International Relations Club '42; Student Teaching '41-42.

VARGO, JOHN, *South Bend, Ind.*

Varsity Football and Basketball '40-41; T Association; B.B.A. Club

VEALE, PAUL, *Harlingen*

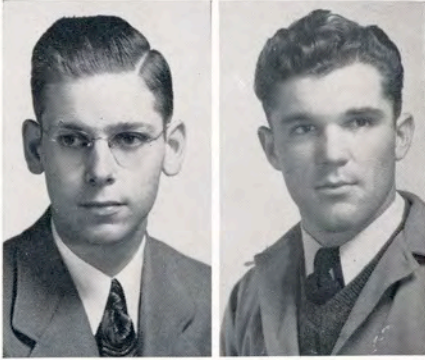
Alpha Chi; International Relations Club; B.B.A. Club.



*Prospective graduates all!*

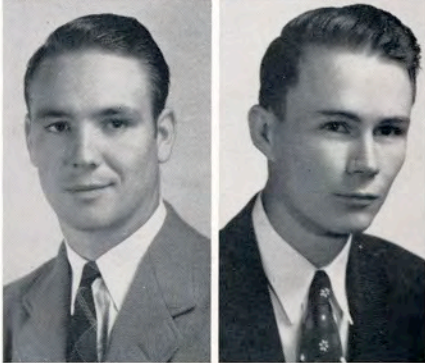


# Class of 1942



VINSON, GERALD, *Uvalde*

VOLLMER, MERWIN R., *Mission*

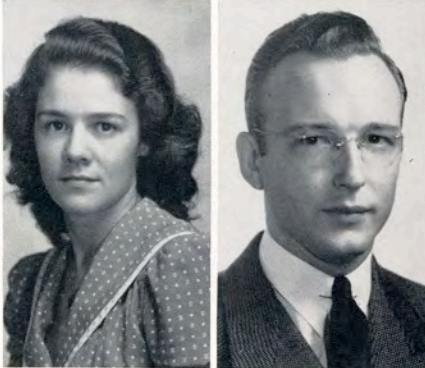


WADDELL, RAYMOND, *Eagle Lake*

Engineers Club '38-42; N.G.E.A.  
'40-42.

WALRAVEN, O. D., *Kingsville*

Chemistry Round Table '37-41; Engineers Club '38-41; Wesleyan Foundation

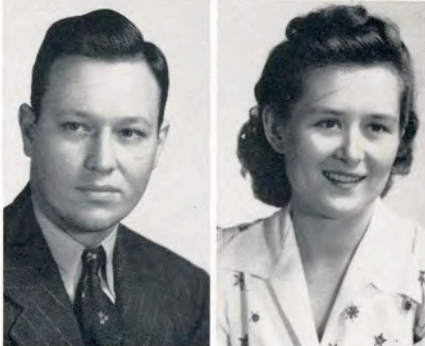


WALSH, VERA, *Chicago, Illinois*

W.S.A. President; Campus Y; Education Club, Corresponding Secretary.

WILLIS, W. B., *Corpus Christi*

Delta Sigma Nu Fraternity President '41-42; Editor El Rancho '40-41; Business Manager of South Texan '41-42; Press Club, President '41-42.



WOLLETT, LEROY A., *Tampico, Mexico*

International Relations Club; Engineers Club.

YANTA, VALERIA, *Runge*

Home Economics Club, Secretary '40-41; Kappa Omicron Phi, '40-42, Treasurer; Hayes Club '39-42, Alpha Chi '41-42.





# GRADUATES . . .

FRANCIS, HAROLD OFFUT, *Kingsville*

Who's Who '39-'40, '40-'41; Alpha Chi '39-'41, president '40-'41; A&I Band '37-'42; Little Symphony Orchestra '38-'42, president '40-'41.



SALAZAR, SABINO, *Kingsville*



TUTT, MARY KERN, *Mercedes*

Footlight Club '41-42; International Relationship Club '41-42; Kappa Zeta Sorority, Parliamentarian '41-42; Pi Kappa Epsilon '41-42.



*Seniors get together and talk of prospects of graduation.*





# JUNIORS





# Class of 1943

ALVAREZ, AURORA, *Kingsville*

ANDERSON, PAULINE, *Karnes City*

BAILEY, BETHEA, *Robstown*

BAKER, JEANE, *Donna*

BARKLEY, JOHNNY, *Bishop*

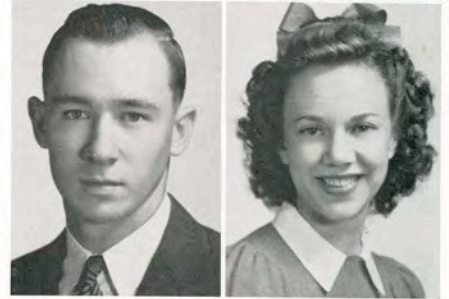
BARLOW, BESS LOUISE, *Agua Dulce*

BATSELL, BOB, *Brownsville*

BEAR, MELVIN, *Comanche*

BOONE, JOHN EDWARD, *Goliad*

BRANCH, PAULINE ELIZABETH, *Santa Rosa*



*President Travis Edwards conducts a Junior class meeting.*



# Class of 1943



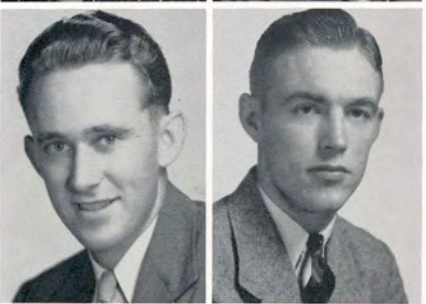
BROWN, DORIS E., *Victoria*

BUCKHORN, KENNETH C., *Dime Box*



BURNEY, DORIS, *Center Point*

CAGE, TAYLOR, *Bishop*



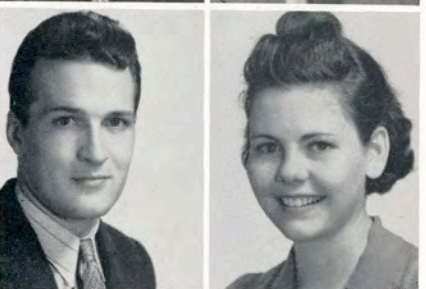
CHEATHAM, K. WINFRED, *Harlingen*

COOK, JACK, *Kingsville*



CRAIG, ALINE, *Kingsville*

CRYER, D. C., *Clarkwood*



DALEY, FRANCIS A., *Chicago, Ill.*

DAVIS, ALMEDA, *Davis, Okla.*





## Class of 1943

DAVIS, BOB, *Kingsville*

DAVIS, C. A., *Alice*

DODD, FRANK, *Raymondville*

DOWNES, L. E., *Pearsall*

DuBOSE, MARJORIE, *Kingsville*

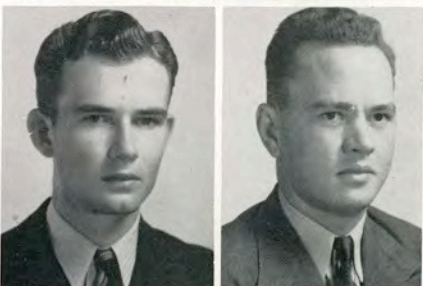
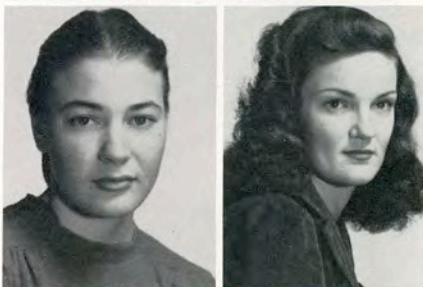
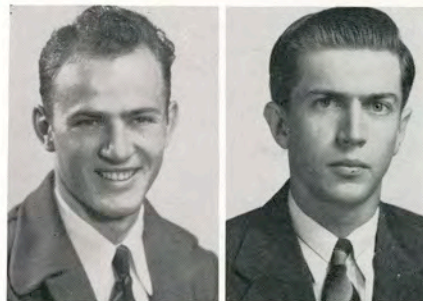
EDDINS, LEONE, *Kingsville*

EDWARDS, TRAVIS J., *Somerset*

ELLIFF, G. A., *Banquete*

FARGERSON, ELIZABETH, *Houston*

FARLEY, JAMES R., *Goliad*



*On the left we have a picture portraying extreme concentration.*



## Class of 1943



FERGUSON, MARY RUTH, *Kingsville*

FERRELL, FRANCES, *Kingsville*



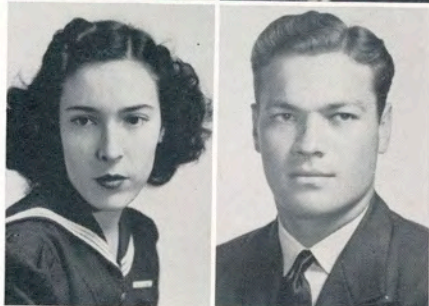
FORD, JENNY WREN, *La Feria*

FOSTER, DOT, *Kingsville*



FRY, BETTY JO, *Kingsville*

GARCIA, JULIO, *Mercedes*



GARZA, TRINIDAD, *McAllen*

GERDES, JACK, *El Campo*



GILBREATH, DORIS, *Alice*

GIPE, MARJORIE RUTH, *Westaco*





## Class of 1943

GOURLEY, DORIS SUE, *Bishop*

HANSARD, MARGARET, *El Campo*

HARVEY, MARY JANE, *Corpus Christi*

HAUSMAN, EVELYN DORIS, *Kingsville*

HAVRE, FRANCES D., *Brownsville*

HAYES, BERT, *Kingsville*

HELM, ALVIN R., *Kenedy*

HILBURN, ELMO A., *Potect*

HILL, GREG A., *Floresville*

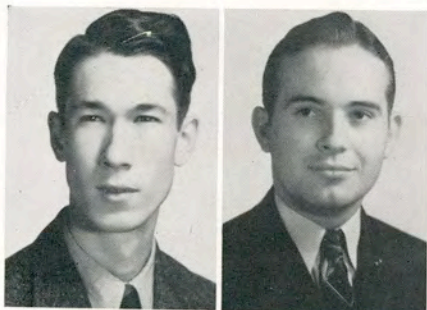
HOFFMAN, WILBURN, *Memphis, Tenn.*



*Even if they do work hard,  
home economics girls seem  
to like it.*

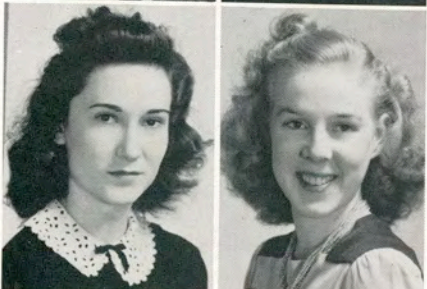


# Class of 1943



HOLMES, BILL, *McAllen*

HUBALEK, JEROME, *Ganado*



JACKSON, RUTH, *Sinton*

KELLEY, CHRISTINE, *Banquete*



KENG, ROBERT J., *Skidmore*

KENNEDY, BILL, *Kingsville*



KNIGHT, ELLEN, *Rio Hondo*

KORGES, DOROTHY LEE, *Kingsville*



LANDRUM, DOROTHY RUTH, *Kingsville*

LATTIMORE, CLAYTON DAVIS, *Marlow, Okla.*





# Class of 1943

LEE, LILLIAN, *Robstown*



LONDON, DOYLE EUGENE, *Corpus*

MANLEY, HARVEY, *Donna*



MARLER, BILL, *Kingsville*

MARTINEZ, BAUDELIA, *Penitas*



MELTON, ELLA BETH, *Pharr*

MEUTH, RALPH RAYMOND, *Skidmore*



MOORE, ARTHUR, *Center Point*

MULLER, GLADYS, *Kingsville*



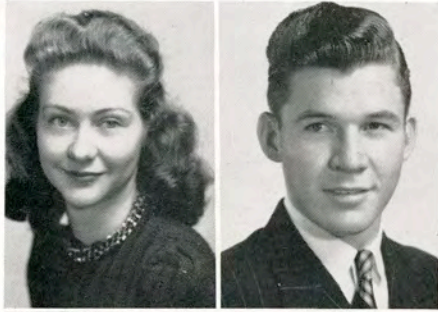
MURPHY, LAURA, *Hernleigh*



*Whatever Bear is whistling must be very good or bad, notice the expressions.*

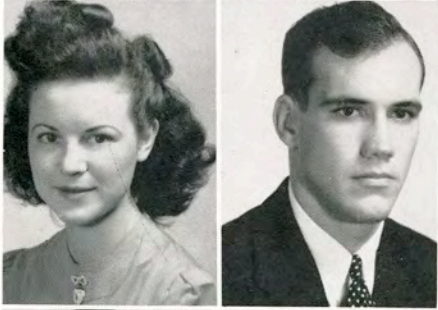


## Class of 1943



McADA, EVELYN, *Campbellton*

McBURNETT, SAM, *Robstown*



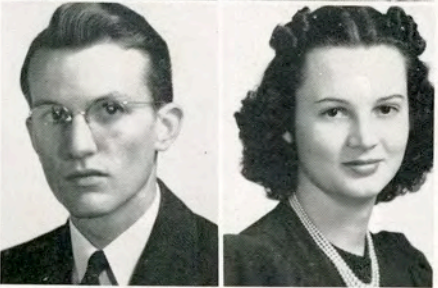
McCLUNG, JUNE, *Kingsville*

McCORD, KIRK, *Kingsville*



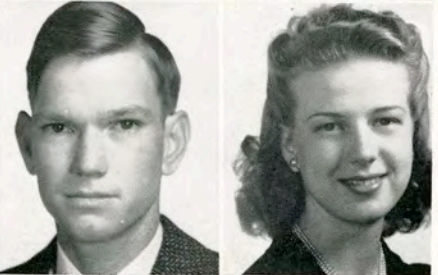
McNEIL, JAMES M., *Grand Bay, Ala.*

NEVILL, MARGARET, *Dallas*



OAKLEY, DON, *Corpus*

ORR, VIRGINIA FERN, *Alice*



PARSONS, ROBERT, *Crystal City*

PARTEN, ROSE, *Alamo*





## Class of 1943

PATTERSON, LORENE, *Benavides*

POWER, BILLY, *Edna*

RHINEHART, BABETTE, *Alamo*

RICKFORD, ENID EVA, *Santa Rosa*

ROGERS, BETH, *Palacios*

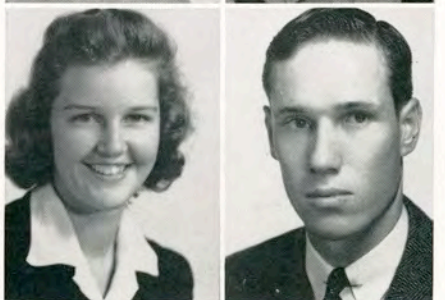
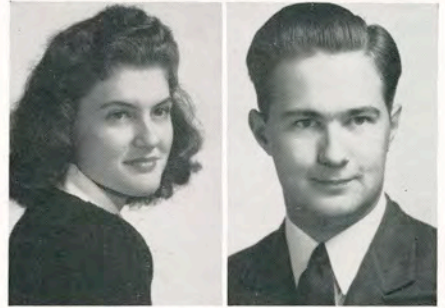
ROGERS, WILLIE B., *Driscoll*

SASSMAN, VIRGINIA, *Robstown*

SCHLEY, BROOKS M., *George West*

SCHWEERS, LEO L., *Del Rio*

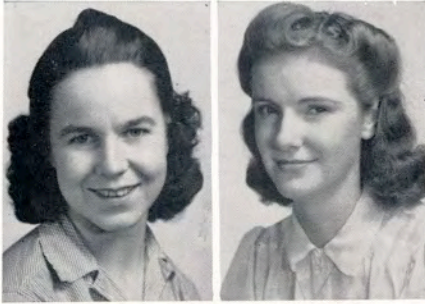
SHOEMATE, FOY LEE, *Edna*



*This must be an election in the Junior class.  
No peeking, Farley!*

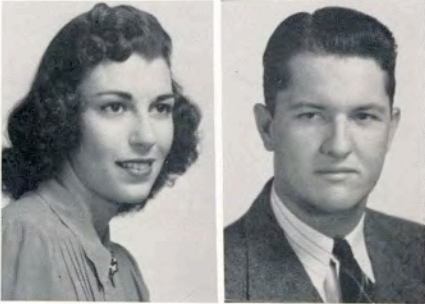


# Class of 1943



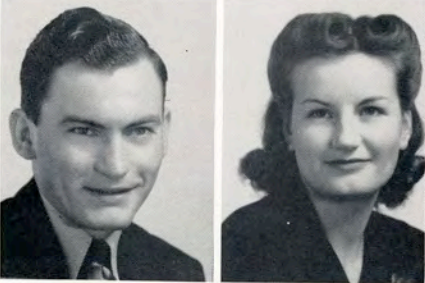
SIMONS, MAURINE, *Kingsville*

SMITH, DAISY ANN, *Banquete*



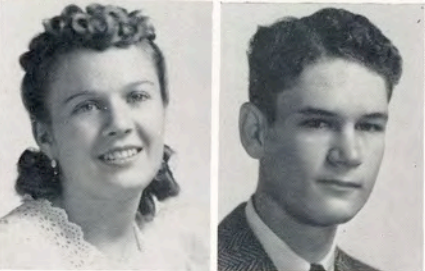
SMITH, FAY, *Bay City*

SMITH, LLOYD, *Mission*



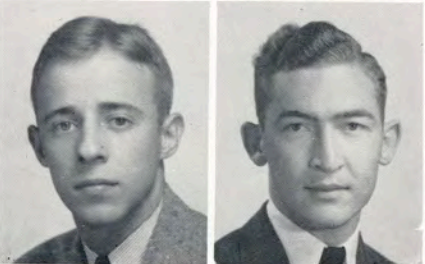
STASNEY, GUS RALPH, *Crosby*

STEGALL, MAURINE, *Eustace*



STEIN, MERLEE ELLA, *Fredericksburg*

STRAIT, JOHN B., *Big Wells*



STOKES, FRED, *Hickman, Ky.*

SULLIVAN, CHARLES, *Corpus*





## Class of 1943

TAYLOR, MAURICE, *El Campo*

TERHUNE, GEORGE K., *Nashville, Tenn.*

TERRY, MADELE, *Seguin*

TOBIAS, DOROTHY, *Robstown*

TIDWELL, MELVIN, *Kingsville*

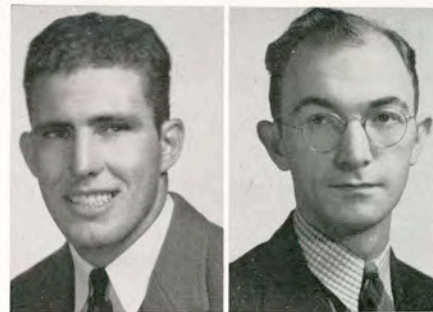
TITTLE, ALICE, *Cotulla*

TROST, ADELAIDE, *Kingsville*

TRUE, ALENE, *Bishop*

TRUE, IRENE, *Bishop*

VORPAHL, WELDON, *La Vernia*



*Gus and his friends talk the situation over.*



# Class of 1943



WARD, RHODA, *Bishop*

WHITE, FLOY, *Corpus*



WHITE, JEAN, *Edinburg*

WHITE, RALPH H., *Harlingen*



WILLIAMS, MARGARET, *Kingsville*

WOOD, PRESTON, *Donna*



WOODWARD, CAVEN, *Encinal*







Is that right, Farley? . . . Superman demonstrates for interested onlookers . . .  
Bill Holmes in the big middle of things with only one listener . . . What were you  
saying, Pauline? . . . The Junior class listens to Student Council representative . . .  
Smile everyone.





SOPHOMORES





## Class of 1944

ADKINS, CLARKE, *Tivoli*

AMSDEN, EVELYN JEAN, *Corpus*

ARBUTHNOT, JEANNIE, *Gonzales*

AULT, DOROTHY, *Calallen*

BARNHART, ANNE, *Beeville*

BARNHILL, ELLEN BESS, *Kingsville*

BELK, GEORGE, *Robstown*

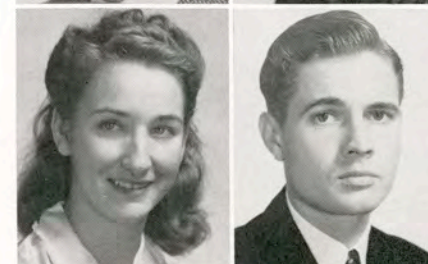
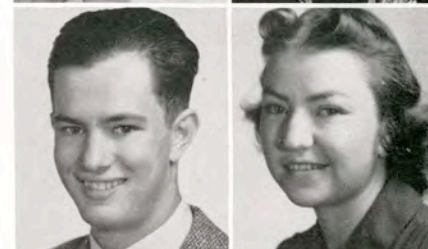
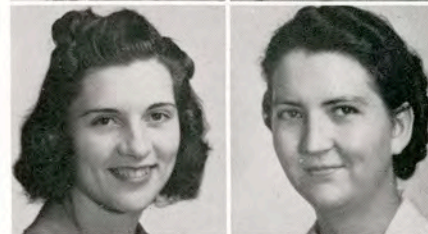
BELYEU, LOVELLE, *Lockney*

BILLINGS, LOIS, *Bandera*

BISSETT, DAULTON, *Tivoli*

BLACKSTOCK, ROSEMARY, *Refugio*

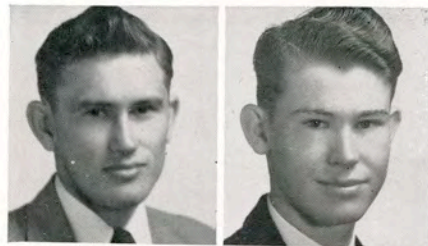
BLOXOM, JERRY, *Robstown*



*Bill, be sure Gus does the "Rat" Race fairly.*



## Class of 1944



BOSWELL, SHERWIN W., *Kingsville*

BOWDEN, CHARLES R., *Alice*



BANNON, TED R., *Corpus*

BROCK, PHYLLIS MAY, *Dallas*



BROOKS, IMA VALENTINE, *Lyttle*

BROWN, ELIZABETH, *Kingsville*



BURRELL, MILDRED, *White Deer*

BUTCHER, MONA RUTH, *Freer*



CANALES, BELIA, *Premont*

CANAY, AMERICA, *Ramirez*



CARVER, MARY, *Karnes City*

CHAPIN, NINA, *Freer*





## Class of 1944

CHENEY, MAURINE, *Raymondville*

CHILTON, CARL, *Port Isabel*

CLARK, MERLE, *Prairie Lea*

COFIELD, TEX, *Granger*

CROW, BETTY RUTH, *Robstown*

CUSTER, A. G., *Kingsville*

DAUGHTRY, BETTY JANE, *Kingsville*

DAVIS, ELBERT, *Freer*

DEAN, TOMMY, *Poteet*

DOWNING, EVIDNA, *Mercedes*

EISENHARD, WILLIAM H., *Corpus*

ELIZONDO, ELVIRA E., *Ben Bolt*



*Bessel and Iky might be administering first aid to their canine friend.*

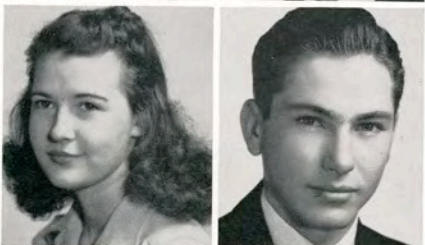


## Class of 1944



ENGELKING, ANNABELLE, *Floresville*

EVANS, BOB, *Sinton*



FAULKS, IMOGENE, *Kingsville*

FIELDER, RAYMOND, *Cotulla*



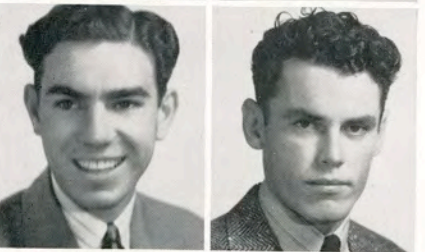
FRY, CAROLYN JEAN, *Kingsville*

GARCIA, AMALIE, *Kingsville*



GARNER, LOCKIE JANE, *Kingsbury*

GILLESPIE, MELBA, *Robstown*



GILSTRAP, TOMMY O'SHEA, *Kingsville*

GLASCOCK, VERNON L., *Kingsville*



GOODMAN, CLAY, *Laredo*

GRIFFIS, ROSEMARY, *Portland*





## Class of 1944

GRIMES, ANNA, *Banquete*

GUEDIN, ERNEST, *Taft*

GUTTMAN, PAUL BOYD, *Corpus*

HALEY, BESS, *Cleburne*

HARBISON, HAZEL, *Hebbronville*

HARDY, MARY FRANCES, *Karnes City*

HARPER, BARBARA, *Alice*

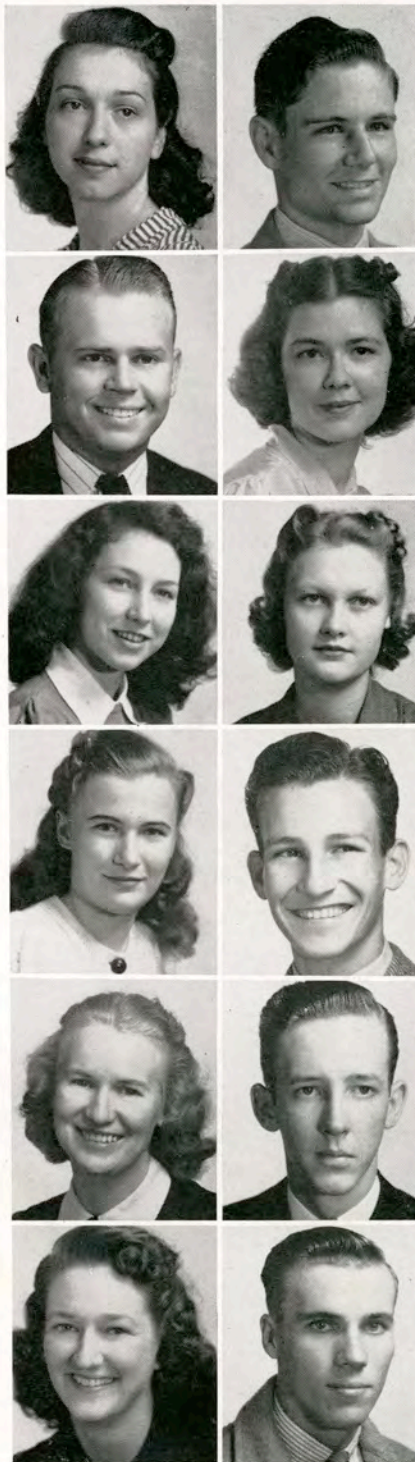
HARPER, FRANK, *Kingsville*

HARPER, HOLLY, *San Antonio*

HARREL, T. A., *Bishop*

HARWOOD, ANNIE LAURIE, *Port Lavaca*

HIBLER, MARION Y., *Kingsville*



*The scientists of the future are working hard during the present.*



## Class of 1944



HIESERMANN, MABLE, *San Juan*

HITT, WAYNE, *Sinton*



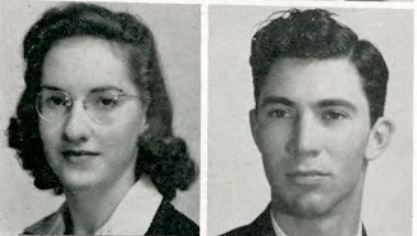
HOBRECHT, JOYCE, *Charlotte*

HORNE, MARY JEAN, *Corpus*



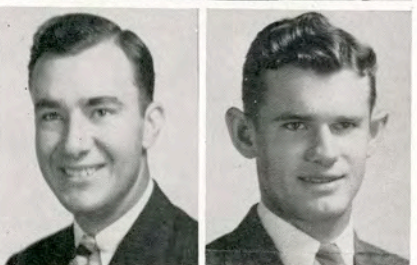
HOUSE, NANCY, *Kingsville*

HUBBARD, GEORGE H., *Donna*



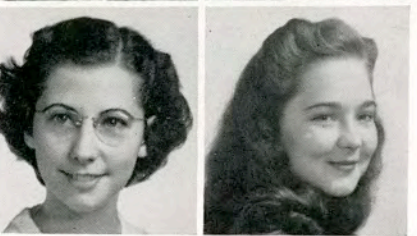
JACKSON, ADELE SHAFER, *Kingsville*

KASTEN, AUGUST, *Nordheim*



KELLY, LEVI, *Bishop*

KERLICK, LOUIS, *Karnes City*



KIDDER, BETSY LEE, *Mercedes*

KRUG, ALICIA, *Kingsville*





## Class of 1944

LAECHLIN, Zo, *Sinton*

LEE, CLEVE, *Driscoll*

LOWE, JIMMIE, *Raymondville*

LIGGET, MILFORD A., *Collegeport*

MANNING, COYE E., *Alice*

MARTENS, ELVERA, *Alice*

MARTIN, BILL, *Eagle Lake*

MARTIN, PATRICIA, *Raymondville*

MARTINEZ, FELIPA LUISA, *Laredo*

MENDIOLA, JOSE G., *San Benito*

MEYER, ELMO, *Poth*

MILLS, MARIE, *Karnes City*



*Just sitting down to a meal they probably prepared themselves.*

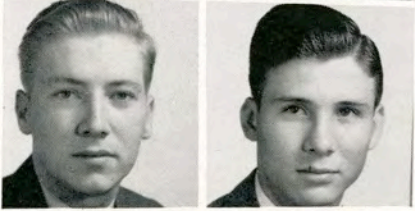


# Class of 1944



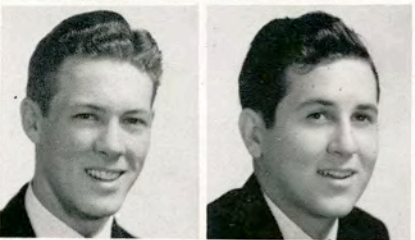
MITCHELL, ROBERT L., *Floresville*

MULLENS, JAMES, *San Antonio*



MULLER, GODFREY, *Kingsville*

MCBURNETT, DAVID, *Robstown*



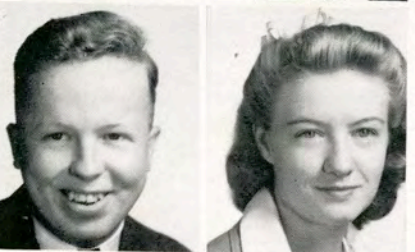
MCCONNICO, JOHNNY B., *Gregory*

MCGUFFIN, JOE, *Dinero*



MCMANUS, RUTH JEANETTE, *Kenedy*

NANCE, BILL, *Harlingen*



NOLTE, WALTER DONALD, *Corpus*

NUCKOLS, MARY ELIZABETH, *Harlingen*



PARHAM, DORIS, *Raymondville*

PATTERSON, DONALD, *Hillsboro*





## Class of 1944

PEEK, BEN L., *Robstown*



PEEK, STELLA, *Raymondville*

PERRENOT, CAROL, *Rockport*



PERSON, CHARLOTTE, *Karnes City*

PETTUS, ANNE, *Goliad*



PLATT, BETTY, *San Juan*

POND, HOWARD, *San Antonio*



PORTER, SARAH, *Kingsville*

POWELL, BILL, *Boerne*



RAMSEY, NENA J., *McAllen*

RAY, MARGY DELL, *Corpus*



RASMUSSEN, MARGIE, *Kingsville*



Glen and Evidna lead the way on a Sunday after lunch excursion.



## Class of 1944



REAGAN, J. CURTIS, *Goliad*

RIDGEWAY, MAMYE MAE, *Aransas Pass*



RIGGS, INA PEARL, *Beeville*

ROBERTS, KATHRYN, *Kingsville*



ROUSE, JOYE, *Alice*

ROEWE, WILMER, *Bishop*



SAENZ, ENRIQUE, *McAllen*

SEDWICK, EUGENIA, *Kingsville*



SCHULZE, FRED, *Devine*

SCOGIN, JOHN, *Corpus*



SCOTT, DOROTHY, *Pearsall*

SCHRIDER, JEAN, *Ingleside*





## Class of 1944

SIMMONS, INEZ, *Corpus*

STEINBERG, DOROTHY, *Floresville*

STEPHENS, DOLORES, *Raymondville*

STEVES, MAURINE, *Rosharon*

TEAS, ARCHER B., *Bishop*

THOMAS, CODY, *Taft*

THOMAS, NORMAN, *Woodsboro*

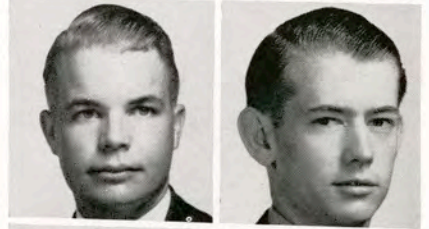
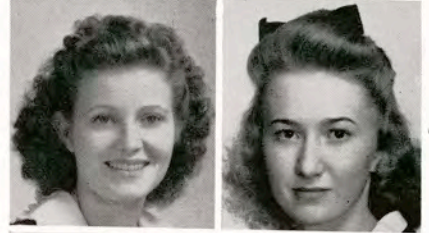
TOLHURST, MRS. B. HELENA, *Kingsville*

TREPTOW, PAUL, *Beeville*

TRUE, VIRGINIA NELL, *Bishop*

TUNNELL, WILLIAM F., *Gregory*

VAUGHN, CARRIE JO, *Pearsall*



*This is the library where people in college go to study, they say.*



# Class of 1944



VOLLMER, LORRAINE, *Mission*

WAGNON, GAYNELLE, *Mathis*



WALLER, GOVIE, *Los Fresnos*

WEEKLEY, DICK, *Pearsall*



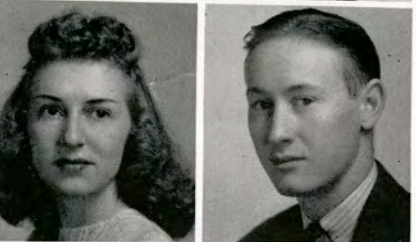
WEST, CARMELETA, *Corpus*

WHEAT, VAN WINN, *Pharr*



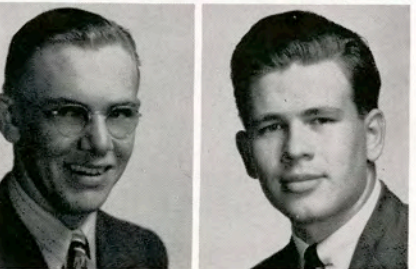
WICKWARE, VIRGINIA, *Pearsall*

WIEDERKEHR, ALVIN, *Freer*



WILLIAMS, ANNE, *Kingsville*

WILSON, FRANK E., *Weslaco*



WILSON, BOB, *Yancey*

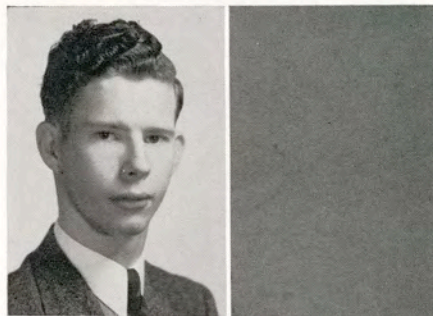
WINFREY, FRANK, *Sinton*





## Class of 1944

WIRTH, NORMAN, *Santa Rosa*



YAKY, BESS HAL, *Agua Dulce*



ZOOKIE, ROSEMARY, *Corpus*



*Could be that T. A. Harrel trying to impress onlookers with his studiousness.*





FRESHMEN







# Class of 1945

ADKINS, ALINE ANNETTE, *Tivoli*

ALBRECHT, BILLY, *Goliad*

ALBRECHT, MYDDLETON, *Edinburg*

ANDERSON, BERTHA JEAN, *Corpus*

ANDERSON, JOAN, *Houston*

ARNOLD, FRANK, *Mercedes*

ATKINS, ROBERT RALPH, *Floresville*

AUSTIN, ETHYLE, *Alice*

AUSTIN, EVELYN, *Alice*

AYERS, MARY LILLIAN, *Carrizo Springs*

BAIN, CLEM, *Kenedy*

BAKER, LAURA NELL, *Newton*



*Freshman Council meets, eats and things begin to happen as a rule.*







## Class of 1945

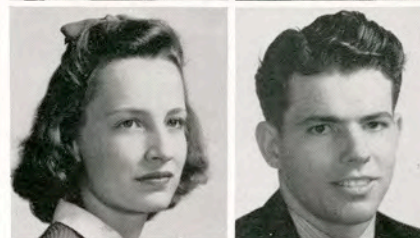
BOST, MILDRED, *Robstown*

BOSWELL, JACK E., *Bishop*



BOUCHER, ALBERTA, *Alice*

BOX, TRAVIS, *Carrizo Springs*



BRETT, KATHLEEN, *Port Lavaca*

BROOKS, BILL, *Lytle*



BROWN, JO NELLE, *Nixon*

BLANTON, MARION, *Alice*



BLUDWORTH, WALLACE, *Kingsville*

CAGE, JOE B., *Bishop*



CANALES, ESTER, *Premont*

CANNON, FRANCES, *Kingsville*



*Freshman girls, Jean, Jane and Evanita present their version of "drahma."*



# Class of 1945



CARRALES, IDOLINA, *Kingsville*

CARROLL, DON W., *Palestine*



CARSON, H. T., *Kingsville*

CASAS, JOSEFA, *Benavides*



CAVE, WINSTON LA RUE, *Kingsville*

CHANDLER, CECIL, *Kingsville*



CLORE, DAVID, *Brownsville*

COOK, JAMES, *Kingsville*



DAVIS, DORIS, *Bishop*

DEAN, DELLA RUTH, *Nordheim*



DENHAM, WAITUS KAY, *Goliad*

DEYO, MARY, *Mercedes*





## Class of 1945

DIETZ, JOHN, *Corpus*

DODSON, KATHLEEN NORMA, *Santa Rosa*

DOGGETT, BARBARA, *Kingsville*

DOUGLASS, RANSOM S., *Robstown*

DOWNES, JOE C., *Falfurrias*

DRENNAN, ROSEMARY, *Alamo*

DUCKWORTH, HOWARD L., *San Antonio*

DUGAT, MARY JO, *Kingsville*

DYER, JAMES FRANKLIN, *Dallas*

ENGELS, LAVINE, *Corpus*

ENGLISH, JACK, *Refugio*

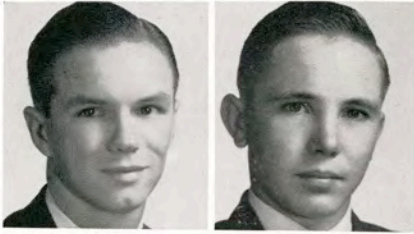
ESTES, LEON, *McAllen*



*Eldon cordially invites Frank, John and Pinky to come to papa.*

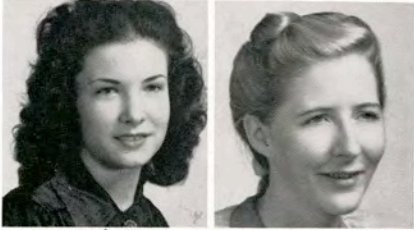


## Class of 1945



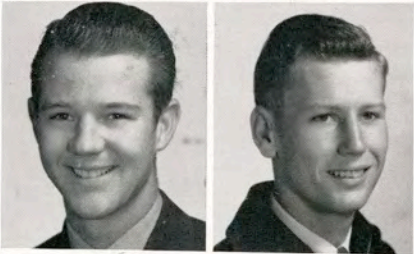
FAVOR, EUGENE, *Charlotte*

FIELDS, WELTON, *Cotulla*



FIELDS, WANDA LOUISE, *Palacios*

FOSTER, NONA JEAN, *San Benito*



FOWLER, ED, *Bishop*

FRITTS, L. A., *Kingsville*



FROMME, ARCHIE, *Goliad*

FROMME, BILLIE JEAN, *Goliad*



GALLE, NELSON, *Goliad*

GANNAWAY, MARIE, *Corpus*



GARCIA, ESTEFANA, *Kingsville*

GARDIEN, KENT E., *Gonzales*





## Class of 1945

GENTRY, BILL, *Canton*

GISE, BETTY JAYNE, *Yoakum*

GOODE, KENNETH, *Weimar*

GOODRICH, JAMES D., *Ft. Brown*

GRABOWSKA, MARY LEE, *Houston*

GUTIERREZ, EUFEMIA N., *Kingsville*

HALL, INEZ C., *Kingsville*

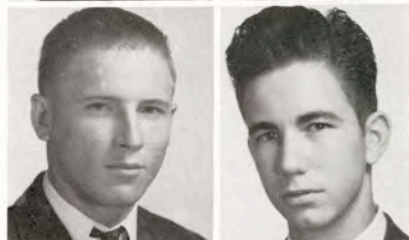
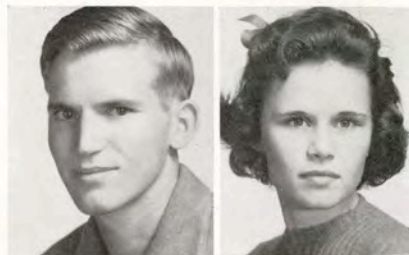
HANSEN, BILLIE MIGNON, *Victoria*

HARRIS, EDITH MARIE, *Kingsville*

HARRIS, JACK HUGHES, *Kingsville*

HARPER, DELTON, *Driscoll*

HARRYMAN, PEGGY, *Edinburg*



*This was the night freshmen girls went through initiation. Most peculiar!*



## Class of 1945



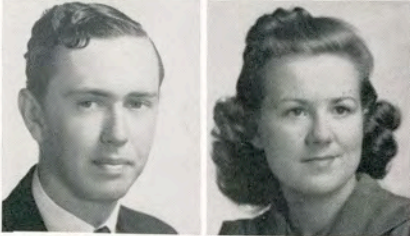
HERRING, DORIS, *Bishop*

HILBRICH, ALVIN P., *Kenedy*



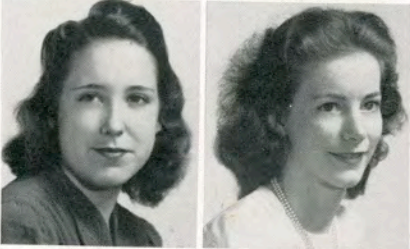
HOBRECHT, NINA ELIZABETH, *Beeville*

HOLLAND, JO ANN, *Yoakum*



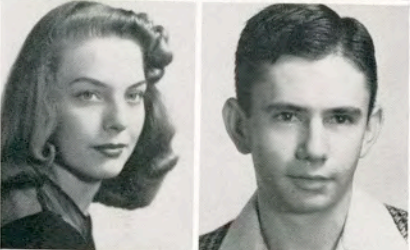
HOLMES, WILBURN, *Alice*

HORNE, NEVA LOIS, *Corpus*



HUDDLESTON, JACQUELINE, *Kingsville*

HUPPERTZ, PATSY, *Kingsville*



HURLBUT, DORIS, *Alice*

JACOB, JOE, *Goliad*



JONES, JACK, *Luling*

KALLAS, MARGIE, *Cleveland, Ohio*





## Class of 1945

KAUFER, BILLIE JEAN, *Riviera*

KEITHLEY, JULIA, *Cotulla*

KELLY, TOM, *Bishop*

KILBORN, DORIS, *Kingsville*

KIRKWOOD, LOUISE, *Rockport*

KOHUTEK, HENRY, *Refugio*

KORGES, SARAH, *Kingsville*

KULLIN, BOBBIE, *Cheapside*

LANSFORD, ELENE, *Catarina*

LANSFORD, HAROLD, *Catarina*

LAWRENCE, VIRGINIA BELLE, *San Antonio*

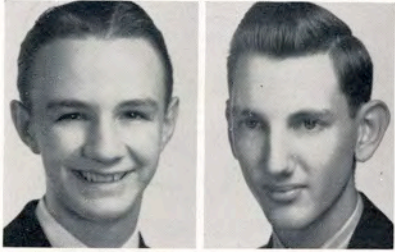
LAWSON, DOROTHY, *Freer*



*Gise, Woolston and Bingley—who could ask for anything more?*



# Class of 1945



LEE, GLENN, *Falfurrias*

LEWIS, GERALD, *Sinton*



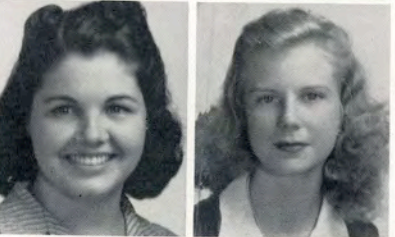
LITTLEJOHN, DAPHNE, *Kingsville*

LLOYD, A. C., *Alice*



MCCANDLESS, LENA AVIS, *Pearsall*

MCCARTY, RACHEL JANE, *Beeville*



MCCLAUGHERTY, ELEANOR, *Sandia*

MCGREGOR, LAURA MARIE, *Corpus*



MCKINSLEY, CLYDE, *Pearsall*

MCLEAN, JAMES, *Corpus*



MCMANUS, MARY VIRGINIA, *Kenedy*

McNAIR, JAMES, *Brownsville*





## Class of 1945

MADDUX, VIRGINIA MAY, *Pharr*

MAHONEY, MARY KATHERINE, *Jourdanton*

MANNING, CLAUDE, *Alice*

MARSTERS, ANNE, *Kingsville*

MARTIN, SIDNEY, *Pleasanton*

MASTERSON, MARGARET KATHERINE, *Laredo*

MIKEL, MARY, *Bishop*

MILLER, DONNA LORRAINE, *Wichita, Kans.*

MIXON, ALETA JEWELL, *Riviera*

MONTZ, DICK, *Falfurrias*

MOORE, GOLDIE, *Driscoll*

MOORE, HARRY, *Kingsville*



*Delta Sigma Chi pledges underwent a temporary change in color and dress.*



# Class of 1945



MORENO, GRACEILA, *Hebbronville*

MORROW, EARL M., *Sinton*



MOSS, RITA FAYE, *Sinton*

NELSON, EDWY JEANNE, *Kingsville*



NOAKES, MARILYN, *Calallen*

NULL, MARVIN, *Refugio*



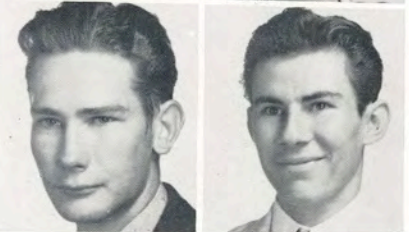
ODOM, DARE, *Edcouch*

O'NEALL, KATHERINE, *McAllen*



PARKER, EVANITA, *Kingsville*

PARKER, EVELYN B., *Kingsville*



PAYNE, CECIL, *Freer*

PENA, JOE O., *Roma*





## Class of 1945

PETERSON, HOWARD, *McAllen*

PIERCE, LELAND, *Premont*

PITZER, REX, *Refugio*

POPE, HAROLD, *McAllen*

PLUMMER, SHERMAN RAY, *Kingsville*

RAINE, CHARLES R., *Uvalde*

RAINWATER, LEO M., *Raymondville*

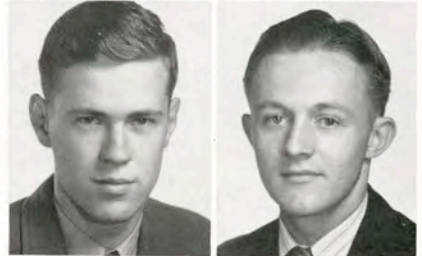
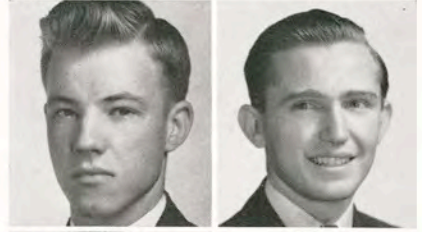
RAMIREZ, BERTHA A., *Benavides*

RAMOS, EVANGELINA, *Hebbroville*

RICHARDS, WILLIAM BOON, *Paris*

RICHARDSON, EVELYN, *Bishop*

RINGWALD, DOROTHY, *Alice*



*Kiethley, V. B., Janna and Gise—wearing their prettiest smiles and best bonnets.*



## Class of 1945



RIPPER, RALPH, *Columbus*



ROBERTSON, CATHERINE, *San Antonio*



ROBBINS, BONNI, *Beverly Hills, Calif.*



ROBIE, RALPH M., *San Antonio*



ROEGELS, SHELTON, *Alice*



RUCKMAN, LOUISE MARIE, *Karnes City*



SCHAEFER, LUCILLE, *Kenedy*



SCHMIDT, JOHNNIE MARIE, *Port Isabel*



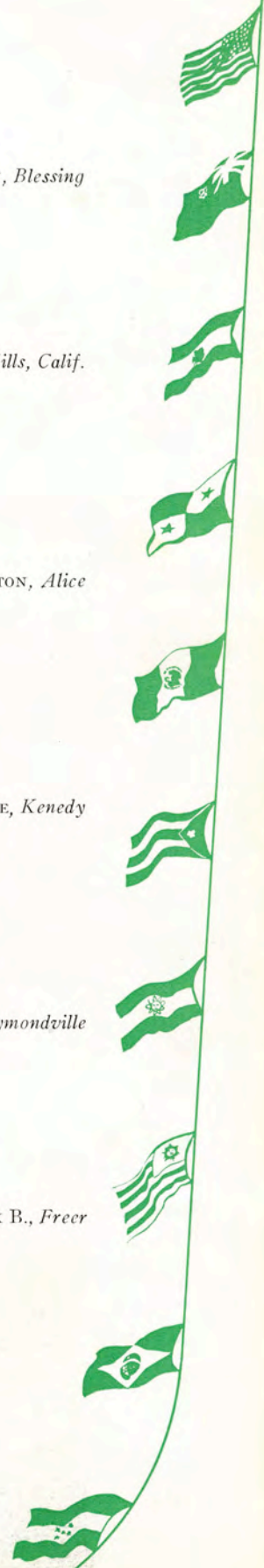
SCOTT, HELEN, *Raymondville*



SEIFERT, FRANKLYN, *Weimar*



SMITH, FRANK B., *Freer*





## Class of 1945

SMITH, GLADYS, *Orange Grove*

SMITH, NOLA MARIE, *Kingsville*

SPRINGER, HENRY, *Algoa*

STATON, CARRIE LUCILLE, *Odem*

STIMSON, AUBRA PEARL, *Kenedy*

STOLLEY, BETTY, *Kingsville*

STONE, L. M., *Robstown*

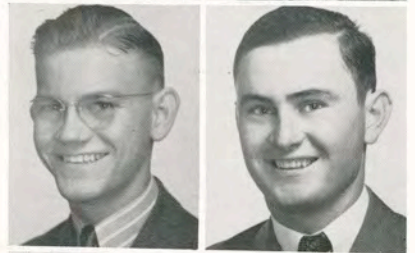
SUGAREK, MELVIN, *Skidmore*

SUMERLIN, CLAUDE W., *Kingsville*

TANNER, LA VERNE, *Kingsville*

TAYLOR, ESTHER, *Goliad*

TAYLOR, GORDON ENNISTHO, *Whitsett*



*The freshman class had their first meeting and did a little voting.*



# Class of 1945



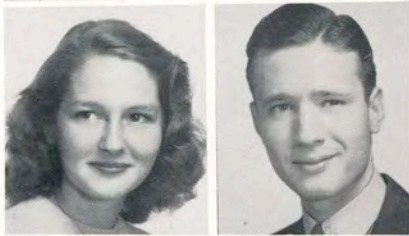
THOMAS, MADGE, *Kingsville*

THOMAS, MARY GWEN, *Aransas Pass*



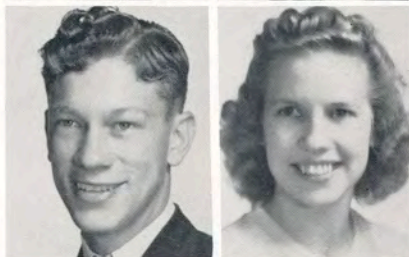
THOMPSON, BESSE, *San Benito*

THOMPSON, NAOMA, *Utopia*



THWEATT, MARY ELIZABETH, *Corpus*

TOMSON, J. B., *Dallas*



TORNO, CURTIS J., *Sinton*

TRUE, MARJORIE, *Alice*



TUMLINSON, ANNETTE, *Carrizo Springs*

TUNNELL, NELLIE VIRGINIA, *Kingsville*



VERTREES, BETTY, *Donna*

WADE, AILEEN, *Edcouch*





# Class of 1945

WALLACE, JUNE, *Alice*

WALTERS, MARGARET, *Laredo*

WEBB, ALICE MARIE, *Alice*

WEBER, RUTH, *Bishop*

WELLS, JO ANN, *Kingsville*

WESTERHOLM, LEO, *Danevang*

WHITE, GLEN G., *Donna*

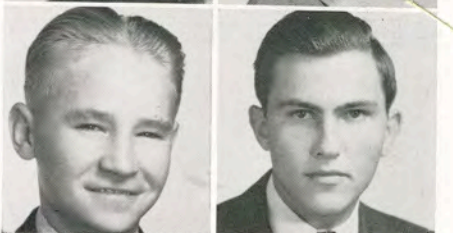
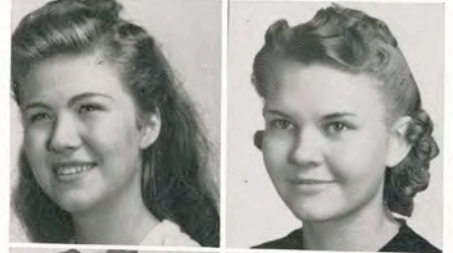
WHITE, MARY HELEN, *Tynan*

WHITELEY, IMA JEAN, *Odem*

WIEDERHOLD, SHIRLEY, *McAllen*

WIEDERKEHR, LEON, *Freer*

WILLIAMS, MILLARD, *Raymondville*



*Barbara is a freshman, but how did Punk and Bill get in there?*



## Class of 1945



WILLIAMS, RITA JAYNE, *Corpus*

WILSON, MARY ADELINE, *Lyford*



WILSON, WILLARD, *Moore*

WOODARD, FRANCES, *Luling*



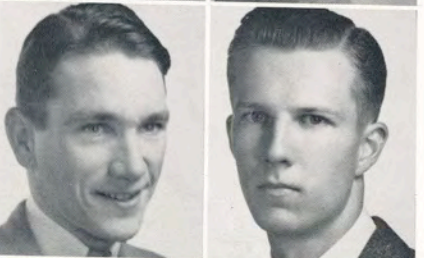
WOODERSON, MARILYN JEAN, *Cuero*

WOODERSON, ROSEMARY, *Cuero*



WOOLSTON, JANE HARLEY, *Kingsville*

WOOLSTON, MARY, *Kingsville*



YAWS, HARRY L., *Alta Loma*

ZOWARKA, JAMES G., *Runge*



ZEZULA, LEONA BRIDGET, *Runge*







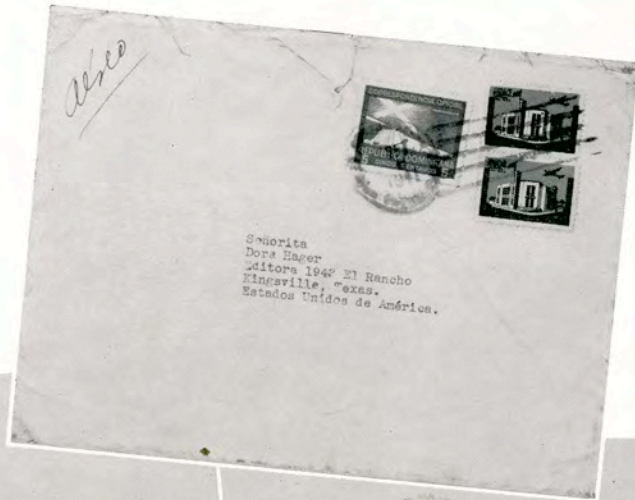
*The entire cast of the Freshman Follies appears in the finale . . . A melodrammer presented by Alicia Krug and Mary Kern Tutt was included . . . Evidna and Glen caught on one windy day going toward the T-Jac . . . Nursery school presents a play . . . The usual book room crowded . . . Can't you make up your mind, Shanky? . . . Assembly just before the Easter holidays.*





A & I LIFE





EL PRESIDENTE DE LA REPUBLICA DOMINICANA

Ciudad Trujillo,  
Distrito de Santo Domingo,  
5 de setiembre, 1941.-

Señorita  
Dora Hacer  
Editora 1942 El Rancho  
Kingsville, Texas.  
Estados Unidos de América.

Distinguida señorita:

He sabido con mucho agrado que usted proyecta hacer en 1942 una edición especial de El Rancho, aniversario del Colegio de Artes e Industrias de Texas, y que el tema elegido para esa edición es el del Panamericano.

En años pasados esta palabra tenía solamente un sentido romántico. En periódicos, conferencias, discursos y otras manifestaciones públicas se la usaba y repetía frecuentemente. Era, sin embargo, una palabra repetida. Hoy el Panamericano ha significado a ser una realidad. Has, non verba. Los acontecimientos de estos últimos tiempos han evidenciado que las Américas deben vivir abrazadas a un alto ideal de unión en la defensa común, en las relaciones culturales, en el comercio y en todo cuanto sirva para estrechar cada día más los lazos existentes entre los diferentes pueblos que las habitan.

Los acuerdos que están interviniendo para la defensa continental, el intercambio de maestros y diplomáticos entre las Repúblicas de América, las disposiciones para hacer desaparecer las barreras opuestas al desenvolvimiento de las actividades maronitiles constituyen la cimentación del edificio que completará la obra de los descubridores y de los que rezaron con su sangre en el Continente la simiente de la libertad.

Santo Domingo, o sea la República Dominicana,

EL PRESIDENTE DE LA REPUBLICA DOMINICANA

-2-

5 de setiembre de 1941.

pequeña por su extensión, pero grande por sus luchas en favor de la libertad y por su ansia de progreso y superación, no dejaré de aportar su grano de arena en esa gran obra.

Desco expresarle a usted el testimonio del profundo placer que me produce su buena cooperación en servicio del mayor acercamiento de los pueblos de la América independiente.

Dios, Patria y Libertad.

*M. de la Concha*  
M. de la Concha  
Presidente de la República Dominicana

# A&J Beauty

Alicia is sweet and graceful, definitely versatile, the type of person one enjoys knowing and playing and working with at any time.



*Lantana Lady*

ALICIA KRUG







E  
L  
R  
A  
N  
C  
H  
O



P  
A  
N  
A  
M  
E  
R  
I  
C  
A  
N  
E  
D  
I  
T  
I  
O  
N



# Another Year Begins! . . . .

*Registration Day's long, long trail a' windin'. By this time, everybody looks a trifle tired. Nobody is behind bars, really, it's just the business office. Dub brings some annual subscribers into the fold. Where buddies gather.*





*Barkley inspiring the fish at the shirt-tail parade. Tomson put his head down and went to it. Freshmen pause to catch their breath. Could they be listening to instructions? Bottle fed babies, no doubt. Who goes there? Friend or foe?*

## Freshmen Are Initiated . . .







*Sid Malone sings for the Loftin Hall diners . . . Seems to be something missing! My what terrible manners these Kappa Sig pledges have. Nice ooey-gooey worms for the Beta Gammas . . . Royce is getting a new hair-do—dye and all . . . The latest college girl fashions modeled by Kappa Sigs in Cousins Hall one Sunday afternoon . . . These aren't freaks—they're the Beta Gammas—sweet, don't you think?*





# Special Train To San Antonio

*The sign that expressed the spirit of the trip. Cypher looks surprised, Cookie quizzical and Teddy bewildered. San Antonio here comes A&I. That's coming in there good and loud. The cameraman must have said, "Look pleasant, please." Some rode and some walked.*







## Lantana Court Campaigns

*This is what they call night work. The dawn rose on these. Ample reading material was provided for all. Maurine, Betty and Liz watch Jack get a shoeshine. The colored campaigners provided an original note. Farley passing out suckers.*





# Lantana Assembly And Elections

*Nine pretty maids all in a row. Gee, and still they come. Unofficial headquarters for everybody's campaign. Loftin Hall's before-lunch-crowd talks over the situation. Music hath charms. Jean and Dodd look on, while Shack presides over the polls.*



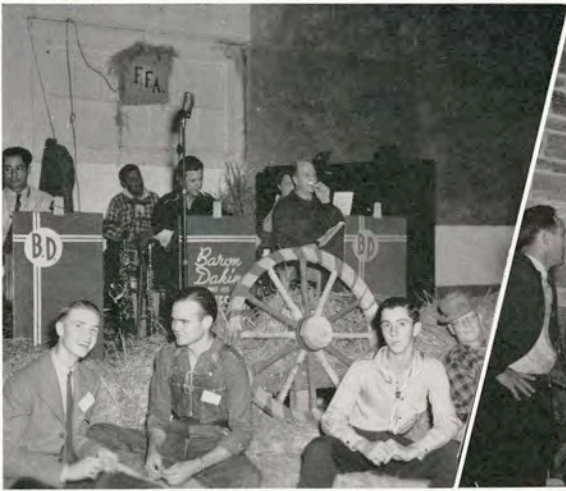




## Assorted Dances . . .

*Nina is presented, while Delta Theta president, Val-mia Gibbs, and escort look on. Amann looks determined, Jean and Lillian look pretty. People at A&I seem fond of dancing. Music maestro, please. Margaret, "Queenie," is presented as Sweetheart of the Engineers. One, two, three—kick.*



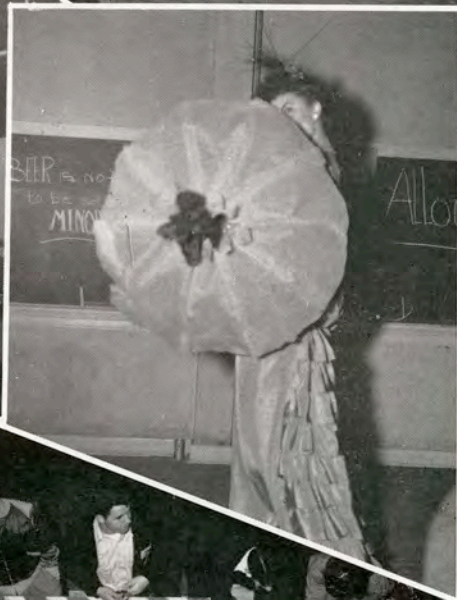


# F. F. A. Barn Dance . .

*Mr. Porter takes it easy. Ella Beth and Gene step carefully over the stile. Wonder what Jean, Max and Mr. Burks are watching. The wagon wheel chandelier was covered with hay. Looks like the stag-line looking. Biddie Hen seems to have strayed a piece from home.*







## Scenes From The Y Carnival

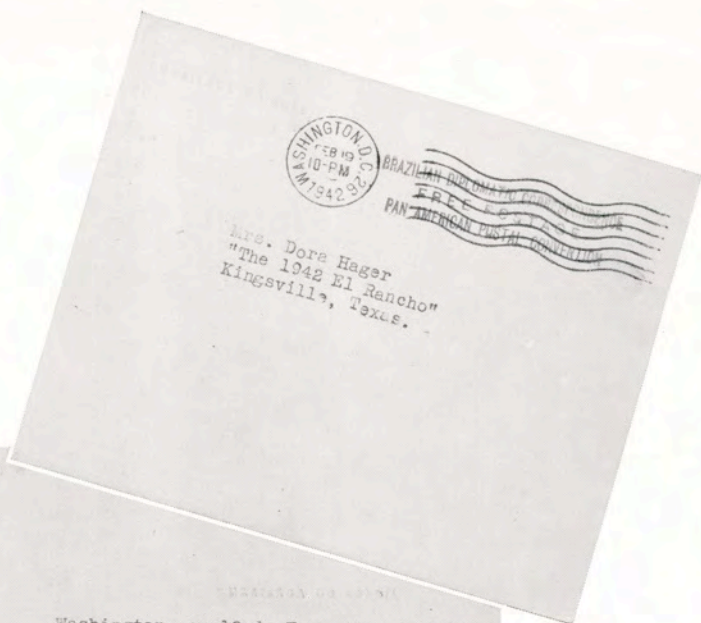
*Those can-can girls were highsteppers. Delta Thetas Bowery Bouncer House and hostess, Mary Jane Harvey. Who are those drunks in the rear, Alberta? That's Iky hiding behind the parasol. Melba looks interested. Step right up and try your luck, all your luck.*





STADIUM





Washington, em 19 de Fevereiro de 1942.

Senhora Dora Hager  
"The 1942 El Rancho"  
Kingsville, Texas.

Prezada Senhora,

Causou-me grande prazer e muito me sensibilizou a feliz lembrança de Vossa Senhoria em solicitar-me a expressão de meu apreço e louvor, como representante do Brasil pelo espírito de cooperação panamericana reinante nessa instituição escolar e profissional.

Apresso-me em manifestar o meu desejo de que esse espírito continue a florescer e crescer no meio de uma juventude destinada a contribuir para a paz do futuro na maior harmonia e entendimento entre os países do nosso continente.

Minhas cordiais saudações.

Embaixador do Brasil.

542.6(22)

A&I Beauty

Always at ease and the mistress of the situation, attractive, patrician but democratic are the phrases to describe Nancy.



*Lantana Lady*

NANCY HOUSE









# Coach A. Y. (Bud) McCallum . . . .



Thirteen may be an unlucky number for some people, but when season No. 13 for Bud McCallum rolled around last fall he and Cal Jewet ignored the superstition in a praiseworthy manner and turned out a football team no one could be ashamed of.

If you want to go into statistics, you'll find that the Javelinas under McCallum have won a large majority of their games and usually came out with the championship of the conference they were competing in. Although the Hogs did not always participate in a league, they have won seven titles—in the Texas

Intercollegiate Athletic Association or the Alamo Conference—in the 13 years of McCallum style football.

A&I has never gone through a season undefeated, but this is because McCallum has never failed to book schools with larger enrollments and more resources for football. Even though A&I defeats have usually been at the hands of schools with larger enrollment, the Javelinas' record against squads better supported financially has been brilliant.





# Javelinas of 1941 . . . . .



FRONT ROW: TAYLOR, end, co-captain; STEINKE, halfback; HALL, halfback; ARNOLD, end; CLARKSON, center; JENSON, end; JONES, guard; MARIS, guard.

SECOND ROW: WALLER, manager; DOWGIELLO, tackle; HILBURN, halfback; DOLAN, fullback, FRANKS, tackle; OWEN, halfback; ROGERS, placekicker; BEAR, quarterback; MOORE, tackle.

THIRD ROW: TERRY, trainer; HAWKES, quarterback; GERDES, guard; FOWLER, guard; SALYERS, guard; RUCKER, fullback; GILLESPIE, halfback; VARGO, quarterback, co-captain; JEWETT, line coach, McCALLUM, head coach.

FOURTH ROW: GILLILAND, end; DEAN, center; HALL, end; MOORE, tackle; PRICE, fullback; KLOSTERS, tackle; SNOWDEN, tackle.

## The Season at a Glance

Perhaps A&I has enjoyed a more successful football season than that of 1941. But be sure to bring along plenty of arguments when attempting to prove that contention.

Rolling merrily along from the famous T formation the Javelinas compiled a total of 336 points—just two less than that chalked up by the Texas Longhorns, national scoring champs. After defeats to San Jose and Texas A&M early in the year, the Javelinas

marched successfully through seven consecutive games. For the season, they won eight games and lost two. Wrapped up in their 33-7 trouncing of St. Mary's was the Alamo Conference championship.

Wherever they went, the Javelinas drew large crowds, who thrilled to machine-like blocking, firm tackling, long runs, and hard-smashing, sprinkled occasionally with a timely pass.



Stuart Clarkson again won nationwide fame and was re-elected to center position on Associated Press' little All-America team. To Gilbert Steinke, speedy halfback who personally accounted for 1,100 of the Javelinas' total yardage, and Warren Arnold, veteran end, whose blocking and tackling was essential, went honorable mentions.

To all the Javelinas, their coaches, their trainer and their manager—congratulations and best hopes for success in all future engagements, wherever they may be.

## Statistics of The Season

A&I 7, SAN JOSE 14  
A&I 35, ARIZONA STATE 7  
A&I 0, A&M 41  
A&I 46, SAM HOUSTON 7  
A&I 14, SAN MARCOS 6  
A&I 68, OKLAHOMA 0  
A&I 55, S. F. AUSTIN 7  
A&I 33, ST. MARY'S 7  
A&I 39, WEST TEXAS 7  
A&I 39, TEXAS WESLEYAN 13

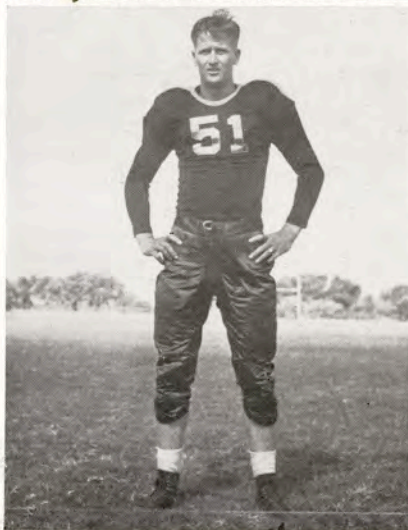


*Really, what good is Tuger's  
helmet going to do him?*





*Precision plus . . . Jones pulling out to lead interference for Steinke as Clarkson comes across for the safety man.*



A&I opened its season 2,000 miles from Kingsville and but for two misplaced lateral passes would have come home victorious over the San Jose Spartans. As it was, the badly outgained Californians captured, 14-7, the rubber game in the three-year series.

A record crowd of 10,000 was hardly seated when Fred Lindsay, San Jose fullback, snagged a lateral toss and sped 55 yards across the Hogs' goal. Three minutes later another lateral went awry to set off a 40-yard drive through A&I territory, climaxed by Lindsay's plunge.

From then on the Javelinas pounded away at the San Jose goal line. Once it was a fumble on the five-yard line that stopped them. Later a 15-yard penalty from the San Jose nine restrained them. Finally, with only six minutes remaining, little Vernon Gillespie scampered 11 yards around end with A&I's touchdown.

A&I out-gained the Spartans 260 yards to 135, out-first-downed them 11 to 7.

CENTER STUART CLARKSON, *Corpus Christi*  
Four letters (graduating)

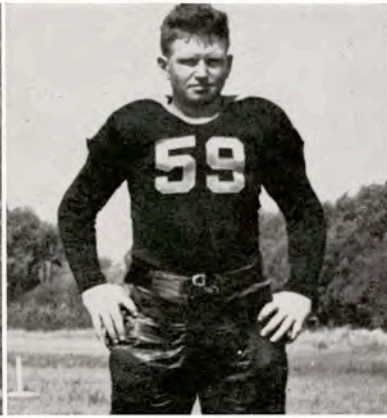
GUARD ROBERT JONES, *Bryan*  
Four letters (air corps)

HALFBACK GILBERT STEINKE, *Ganado*  
Four letters (graduating)

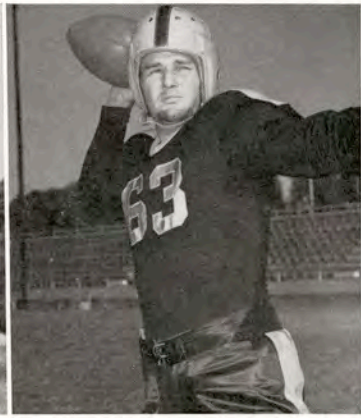




END WARREN ARNOLD,  
*Liberty*  
Four letters (air corps)



FULLBACK JACK RUCKER,  
*McAllen*  
Three letters



QUARTERBACK SAMMY HAWKES,  
*Sabinal*  
Four letters (graduating)

Determined to make up for their loss to San Jose, the Javelinas stopped at Tempe on the way home and humbled the Arizona State Bulldogs 35 to 7 in a striking exhibition of precision and deception.

From the first time they had the ball, when Vernon Gillespie raced 86 yards for a punt return score, the Javelinas had the 1940 Border Conference champions reeling with the ferocity of their attack, with machine-like blocking.

Shortly after Bill Dolan had plunged over, the

Bulldogs blocked a punt and marched across to bring the score up to 14-7. Still in the first half, however, Sammy Hawkes sneaked through the line, and Leon Price banged into paydirt. Gillespie's pass reception run of 50 yards preceded Hawkes' second touchdown sneak in the third quarter.

Clyde "Lard" Rogers ran his extra point total to six straight by making all five conversions. Statistics heavily favored the Hogs, 15 to 8 on first downs, 294 to 184 on yardage.



*This Lumberjack didn't get far after Taylor (arms around him), Tuger Hall and Clarkson got through.*





Vernon says, "Come on past, Tuger."



A&M's mighty Aggies banged away to no avail for 25 minutes against the Javelinas but took to the air for one first half touchdown and then ran the score up to 41-0 in a game witnessed by 17,500 in San Antonio's Alamo Stadium.

There was little the Aggies could do with the Javelina forward wall, but likewise, there was little Javelinas could do with the Aggie passing attack, featuring Derace Moser's accurate pitching and glue-fingered receivers. Highlight from the A&I standpoint occurred in the second quarter, when the Aggies pounded the Javelina line four times from the Blue and Gold three-yard stripe and did not even make a dent.

A&I never penetrated deep into Aggie territory, but on three separate occasions Gillespie, Tuger Hall, and Gilbert Steinke nearly broke past the Farmer safety man.

Statistics favored the Aggies thusly: first downs, 18-6; yards rushing, 78-65, and passing, 296-0.

QUARTERBACK JOHNNY VARGO, *South Bend, Ind.*

Two letters (graduating)

HALFBACK TUGER HALL, *Terrell*

Three letters (air corps)

TACKLE WALLACE FRANKS, *Corpus Christi*

Four letters (navy)



Forgetting the game was supposed to be a toss-up, the Javelinas trampled the Sam Houston Bearkats 46 to 7 before a homecoming crowd of 8,000.

Although the Kats forced the Hogs to punt only once, they were rough enough to send eight players to the sidelines with injuries.

First touchdown was scored when Price climaxed a Steinke-paced 73-yard march. Gillespie ran 24 for another, and Steinke's 56-yard, field reversing scamper brought the score up to 20 0. It was then that Charley Martin, Kat half, raced 75 yards with a Hog fumble to give Sam Houston its touchdown. Shortly the Hogs had a fourth touchdown when Tuger Hall circled end for four yards and his first score in three years of outstanding varsity football.

Russ Jensen wrestled away a Kat pass to give A&I a third quarter touchdown, Dolan plunged across, and Floyd West connected with Robert Stephens on an 80-yard pass play to complete the scoring. Rogers kicked all four extra points. In first downs it was A&I 19 to 9, in yardage 510 to 186.

END MAURICE TAYLOR, *El Campo*

Three letters (air corps)

TACKLE AL DOWGIELLO, *Gary, Ind.*

Two letters (graduating)

QUARTERBACK MELVIN BEAR, *Comanche*

Three letters

END RUSS JENSON, *South Bend, Ind.*

Two letters (graduating)

*Last Rattler's  
down and Stein-  
ke's clear!*







GUARD ROSCOE MARIS  
*McAllen*  
Three letters  
(air corps)



Same old story



Hogs break through



Few things went right for the Javelinas at San Marcos, but they finally clicked with two pretty runs to down the stubborn Bobcats 14 to 6.

Sluggish play, perhaps occasioned by the absence of six regulars due to injuries, helped put the Javelinas behind for seven minutes in the second quarter. Brademan's pass to Beaty was good for ten yards and a Bobcat touchdown.

A&I marched right back down the field but fumbled on the San Marcos four. Next time the Javelinas gained the ball Steinke weaved 30 yards for a touchdown, and Rogers broke the tie with a well-aimed placement. A fumble on the Bobcat two-yard line cost the Javelinas another score.

Early in the fourth quarter Hall faked to a pair of his teammates and raced 63 yards untouched on a bootleg for the final touchdown. A&I piled up a 13-7 advantage in first downs and a 235-83 margin in yards rushing.

GUARD JACK GERDES, *El Campo*  
Three letters

END PAT HALL, *Corpus Christi*  
One letter

FULLBACK LEON PRICE, *San Perlita*  
Two letters

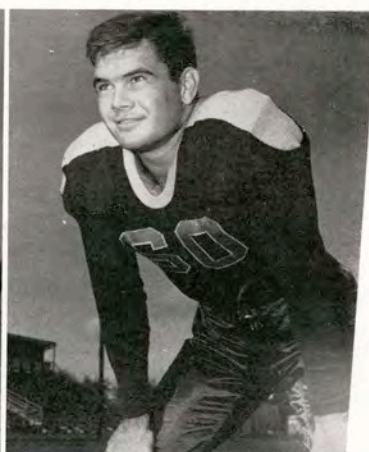




HALFBACK VERNON GILLESPIE,  
*Woodsboro*  
Two letters



TACKLE DONO MOORE  
*Falfurrias*  
Two letters (coast guard)



FULLBACK BILL DOLAN,  
*Corpus Christi*  
One letter (air corps)

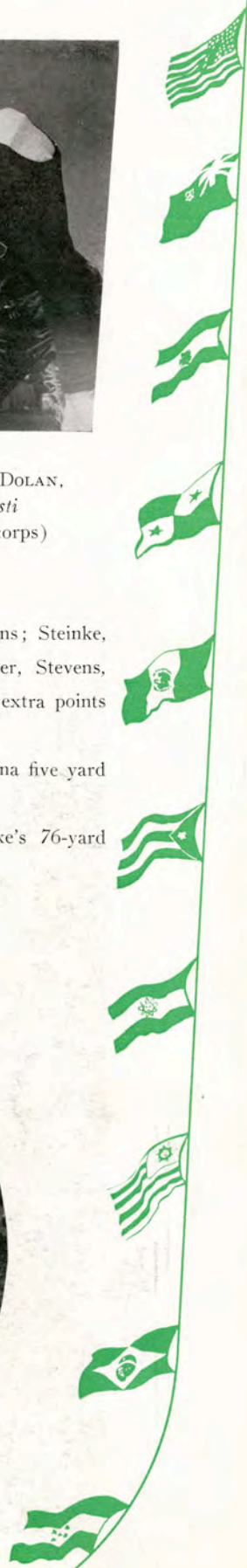
Oklahoma State (Ada) dropped down for a game and became the victim of the second largest scoring parade in A&I history. Only the 71-0 swamping of Dixie University in 1934 surpassed the 68-0 score the Javelinas ran up over the Tigers.

First-year men saw much service as the Javelinas got under way slowly, Jack Rucker's plunge being the only first quarter score. Scoring was widely

distributed: Tuger Hall, three touchdowns; Steinke, two; and Gillespie, Melvin Bear, Rucker, Stevens, and Vargo, one each; and Rogers, eight extra points out of nine attempts.

Oklahoma drove as far as the Javelina five yard line but was repelled back on the 21.

Among the long runs were Steinke's 76-yard scamper, and Hall's 50-yard dash.





*Rucker did this.*



Discourteously spoiling Stephen F. Austin's homecoming, the Javelinas coasted to a 55-7 triumph over the Lumberjacks at Nacogdoches.

A&I received and marched 65 yards down the field, Steinke circling end for 17 yards to score the first touchdown. Steinke soon duplicated his feat, and Rucker dived over for a third score in the first period. The Hogs racked up another 21 points in the second quarter, Gilliland racing 84 yards with an interception, as well as completing Hall's toss, and Rucker plowing 37 yards with another interception.

Gillespie ran 22 yards with a pass from Price and zipped 37 for two last half touchdowns. The Jacks sandwiched their only score, a pass from Covin to Bolton, between Gillespie's touchdowns.

Statistically speaking, A&I led in first downs 13 to 5, in yardage, 389 to 112.

FULLBACK ALLYN OWEN, *Mathis*  
One letter

CLYDE ROGERS (placement specialist), *Corpus Christi*  
One letter

GUARD BERT FOWLER, *Corpus Christi*  
One letter (marines)





CENTER GEORGE DEAN  
*Jourdanton*



END ALDEN GILLILAND  
*Raymondville*  
One letter



TACKLE HOWARD MOORE  
*Nacogdoches*  
One letter

St. Mary's boasted an outstanding passing attack, but the 50,000 fans who inhabited Alamo Stadium left marveling at the running offensive which netted the Javelinas a 33-7 victory over their arch-rivals.

With the triumph went the Alamo championship.

Steinke, whose field-reversing tactics "had the Rattlers tackling each other" (as a San Antonio paper put it), blazed 61 yards in the first period to touch off the fireworks.

Hall's pass to Gilliland made it 13-0 before Curtis Sandig, St. Mary's halfback, took a bullet pass for the Rattlers' only score.

Hall's bootleg for 20 yards and Steinke's 65-yard punt return gave the Javelinas 14 points in the third period. Final score was Price's short smash following a fumble recovery by Vargo. First downs favored A&I 14 to 10, yardage, 390 to 210.



*They shall not pass. Bert and Al mean it.*





*Completed, but Johnny and Jack will get him.*



Apparently forgetting to read the papers regarding Wee Ben Collins, A&I's linemen blanked the nation's scoring leader and paved the way for a 39-7 triumph over the West Texas Buffaloes here.

For the night, the tricky, fast moving Buffalo half netted only 21 yards in 19 carries.

First time the Javelinas got the ball they marched smoothly 65 yards until Vargo was close enough to sneak across. In the third quarter, the Hogs drove 63 yards, Hall knocking off the final 16 yards.

In the last quarter it became a rout. Steinke zipped 62 yards, Gilliland caught Hall's pass for 25 yards, Gillespie raced 45 yards, and Steinke climaxed a passing thrust to plow over tackle. Trailing by 32 points, the Buffs scored when McMahan crossed on a reverse from the four following a long pass.

First downs were in the Hog's favor, 16-15 and A&I held a 411-195 margin in yardage.

TACKLE ALBERT KLOSTERS, *Dublin*

Two letters

GUARD JACK SALYERS, *Corpus Christi*

TACKLE IVAN SNOWDEN, *McAllen*

One letter





TACKLE JAMES ROBINSON,  
*Kingsville*



HALFBACK FLOYD WEST,  
*Robstown*



HALFBACK ROBERT STEVENS  
*Floresville*

Entering the Texas Wesleyan game trailing Duke University by 14 points for the national scoring lead, the Javelinas rolled to a 39-13 victory at Corpus Christi.

Before nine minutes were up Rogers had lumbered in to boot the tying marker. Tuger Hall scored the first two markers on bootleg plays and passed to Gilliland for 72 yards and the third touchdown.

In the third period Gillespie and Steinke each

slipped across, and Gillespie added the final score in the fourth period by racing 35 yards. The scrapping Rams scored in the second quarter on Kyle's short run. Just before Gillespie's last touchdown, Kyle lateraled to Hoffman for the other Ram score.

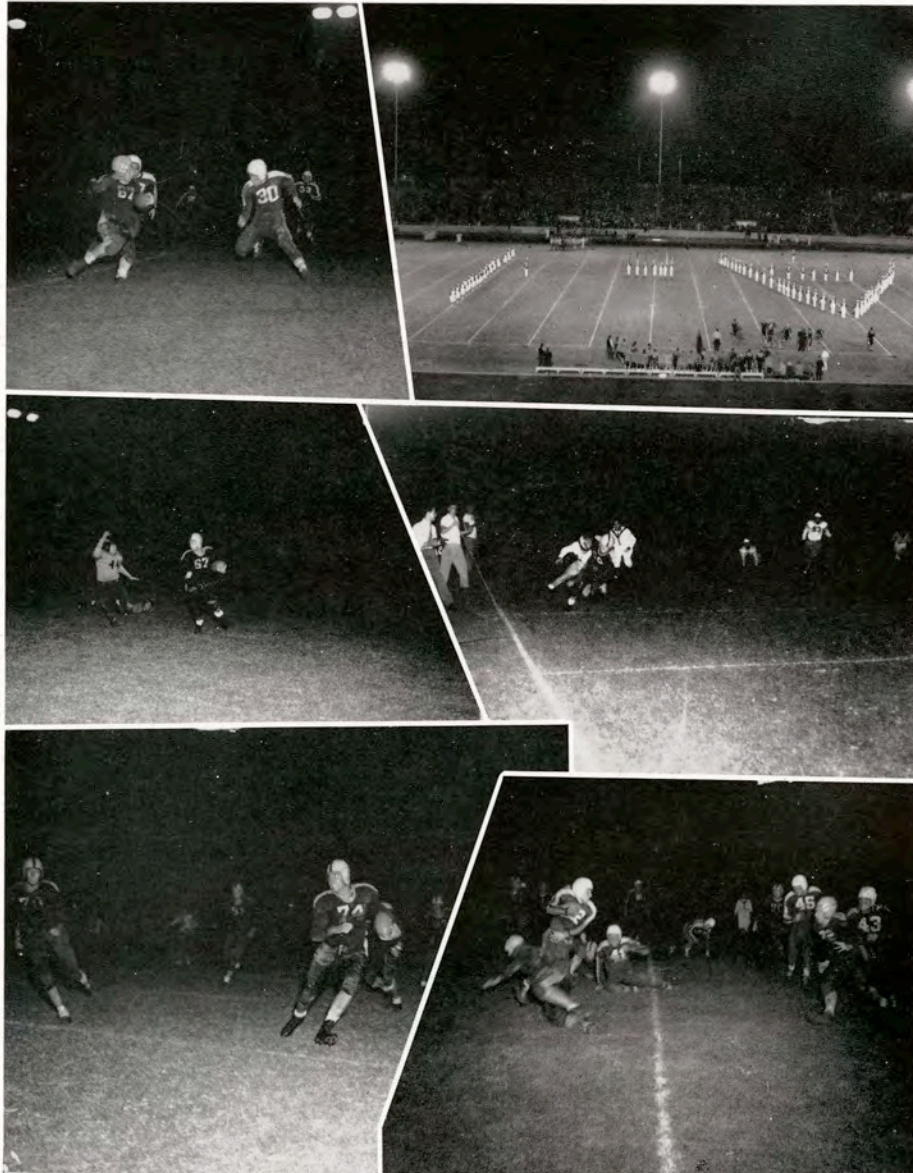
First downs saw A&I in front 20 to 9, yardage, 324 to 134.

*One of the old standbys of A&I athletic teams will be missing next fall. He is Ray "Bill" Terry, who in his four years of services as first waterboy, then manager, and finally trainer, missed only one football practice—and that was occasioned by a death in the family.*





# In Retrospect . . . .



*Snowden, Dolan and Shack combine forces to stop this Buff . . . . Dixon's surrounded . . . . "A&I" spell out the Central High squad . . . . Stevens breaks free for a score against East Central Oklahoma . . . . Leaning forward, Gillespie crosses with the touchdown against San Jose . . . . Price has up momentum . . . . Familiar sight . . . . Highscoring Ben Collins caught behind the line of scrimmage.*



*Rattlers break through  
against Rucker to delay  
inevitable touchdown.*



*Gillespie's a c r o s s  
in the rout of West Texas.*



*Present, future, past.  
T Association Sweet-  
heart Nancy House, Lit-  
tle Sweetheart Betty  
Jane McCallum, and for-  
mer captain Kenneth  
Grimes.*





# With the Basketeers . . .



FRONT ROW: STOKES, PRESSLEY, BEAR, VARGO, RECTOR, THOMPSON.  
BACK ROW: COACH JEWETT, WEEKLEY, JONES, NANCE, SWIGGART, MANAGER RUCKER.



*Hampered by lack of cagers, Coach Cal Jewett handled basketball as well as golf and tennis this term. The 13 jinx had no scare for him, either, since he has been working here with Bud McCallum for that number of years.*

*A former All Texas Conference guard at St. Edward's, he has taught his skill to A&I linemen, who have won much acclaim for their showing.*









Everything comes to a close—even A&I's losing streak—and the Javelinas defeated Sinton's Independents 37 to 28. St. Edward's University became the Hogs' second victim, 42-27. Next night, however, the Bobcats came down from San Marcos. Although A&I led at the end of the first quarter, the final score favored the visitors 45 to 35.

Naval Air Station at Corpus Christi, destined to become champions of the Eighth District, warmed up on the Javelinas 53 to 25, but St. Edwards obligingly absorbed a 62-41 decision. When rough games are played, fans will still harken back to the Sinton-A&I game played here. When the swinging was completed, the Hogs had staved off a desperate rally to gain a 55-52 triumph.

Then followed the trip to Monterrey.

Leading scorer of the season was Jack Thompson, who chalked up 121 points. Just behind him was Ted Swiggart with 115.

*Up in the air with another one . . . Tipoff at Monterrey, Wilson jumping . . . whose legs? Foreign entanglement.*





*It's up there*



*Add another*



*They're off*

## Season Record

A&I 34, SOUTHWESTERN 36  
 A&I 29, SOUTHWESTERN 42  
 A&I 34, SOUTHWESTERN 41  
 A&I 42, SOUTHWESTERN 52  
 A&I 29, SWTTC 52  
 A&I 37, SINTON 28  
 A&I 42, St. EDWARD'S 27

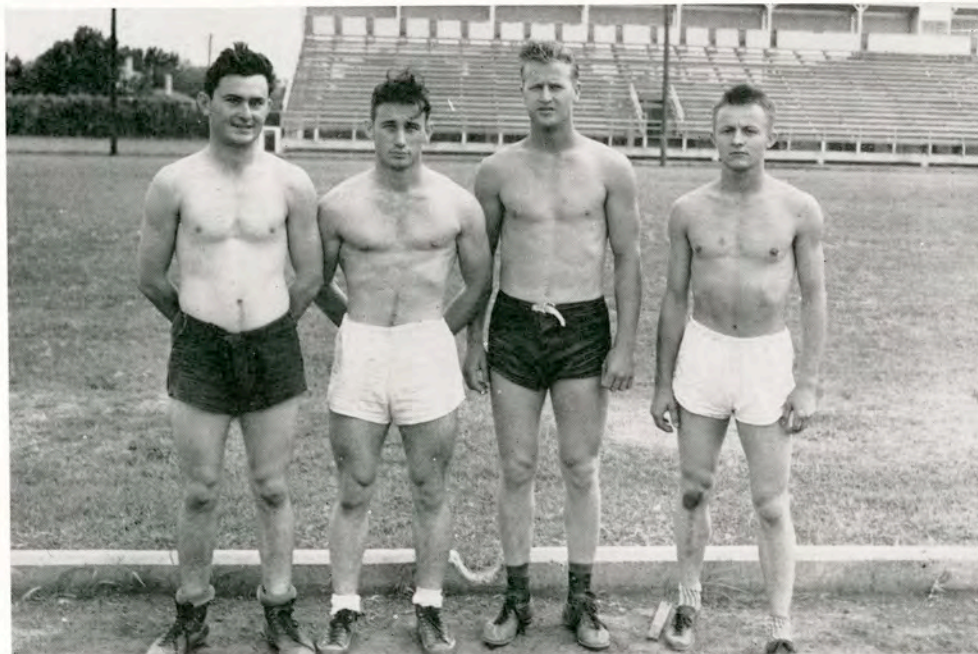
A&I 34, SWTTC 45  
 A&I 25, NAVAL STATION 53  
 A&I 62, St. EDWARD'S 41  
 A&I 55, SINTON 52  
 A&I 33, MONTERREY 39  
 A&I 48, MONTERREY 45  
 A&I 37, MONTERREY 48

Visible evidence of the goodwill fostered when the Javelinas played the Circulo Mercantile Mutualistic basketball team in Monterrey. Mexican sportswriters became so pepped up over the Hogs that they gave A&I banner headlines. In case you're wondering about the English translation, it means "Kingsville tied up the series last night by winning 48 to 45." Or something like that.





# Cinder Path Javelinas . . .



SUGAREK, WEED, STEINKE, RAINE

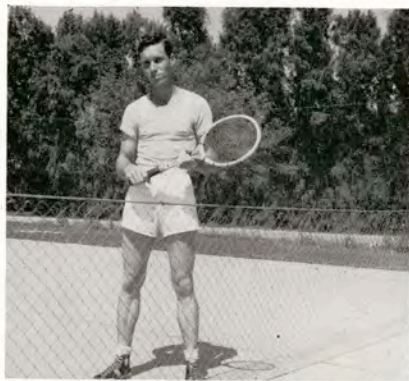


A&I's track and field men were able to enter three meets before the no-travel edict was passed: Border Olympics, Texas Relays and Fort Worth's Southwestern Exposition. It was at the latter meet that they won their greatest success. Leon Price placed second in both the shot put and the discus; Gilbert Steinke was third in the broad jump and Vernon Gillespie finished fourth in the same event. Texas A&M and the University of Texas barely nosed out the football shuttle relay team composed of Alden Gilliland, Charley Raine, Steinke and Gillespie.



# Tennis Season . . .

Before the tire shortage hit them, the tennis players went to Fort Worth and trounced the Texas Wesleyan Rams, a Texas Conference power, four matches to two. Earlier in the season Stokie Holmes, A&I No. 1 man, defeated Bill Blalock, University of Texas captain, in an exhibition at the Falfurrias Hearts Delight Tournament. A tour in private cars was being planned as the El Rancho deadline approached.



SCHLEY  
BURNAY



BACK ROW: PRESSLEY, JEWETT, COCKERHAM.  
FRONT ROW: BURNAY, SCHLEY, HOLMES, TOMSON.





# Golf Season . . .



BLUDWORTH, EEDS, LITTLE, McNAIR.



LITTLE  
McNAIR

Matches with nearby country clubs and junior colleges were being sought for the Javelina golf team as El Rancho went to press, since trips of more than 150 miles were banned. Before that, however, they went to the Fort Worth Fat Stock Show tournament, where James McNair placed third in the long drive contest.





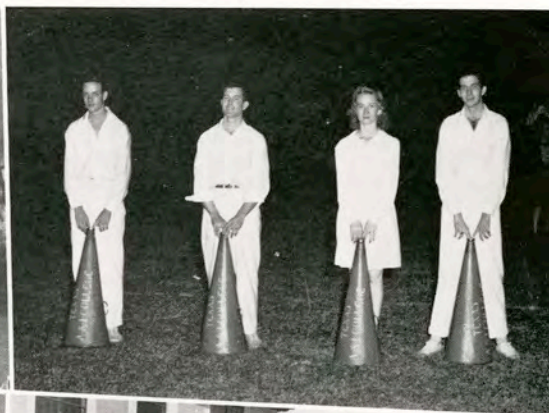
"Sports for everybody" is the motto at A&I. Seven men's teams entered the intramural touch football race, with Seale Hall and BBA ending in a tie for top honors. Engineers were first, the Aggies second in basketball. Also on the program were softball, tennis, golf, and track and field. Kenneth Grimes, Tuger Hall, and Melvin Bear shared duties as directors.

Women's Sports Association again experienced a busy year, what with lawn tennis, table tennis, a manless dance, a cabin party, and a hay ride on their schedule.





# Cheer Leaders . . .



A&I's band starts up "Javelina Victory March," and the cheer leaders go into action. Their enthusiasm is readily picked up by the students, who in turn, through their voices, pass it on to the Javelinas. Athletes do better if they know the crowd is for them. A&I's outstanding successes last fall might be in part

attributed to the efforts of these five leaders: Johnny Barkley, head cheer leader; Alicia Krug, Maurine Steves, Vernon Savage, and Frank Dyer. Bonfires and special assemblies were features of a season highlighted by pep rallies in downtown San Antonio.

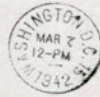




PERSONALITIES



MEXICAN EMBASSY  
2829 - 16TH ST., N. W.  
WASHINGTON, D. C.



Miss Dora Hager,

"The 1942 El Rancho",

KINGSVILLE, Texas.

EMBAJADA DE MEXICO

Washington, D. C.,  
6 de marzo de 1942.

Señorita Dora Hager,  
"The 1942 El Rancho",  
Kingsville, Texas.

Estimada señorita Hager:

Me es grato enviar a usted, a los profesores y alumnos del Colegio de Artes e Industrias, de esa ciudad, mis calurosas felicitaciones por la forma efectiva en que fomentan la amistad y el acercamiento entre los habitantes de nuestro Continente, particularmente entre los pueblos de México y de Estados Unidos.

Soy de usted muy atento y seguro servidor,

*F. Castillo Nájera*  
Francisco Castillo Nájera,  
Embajador.

# A&I Beauty

A cheerful smile and a twinkle in her blue eyes, a dash of sunshine in her manner might be called the secret of Billie's popularity.

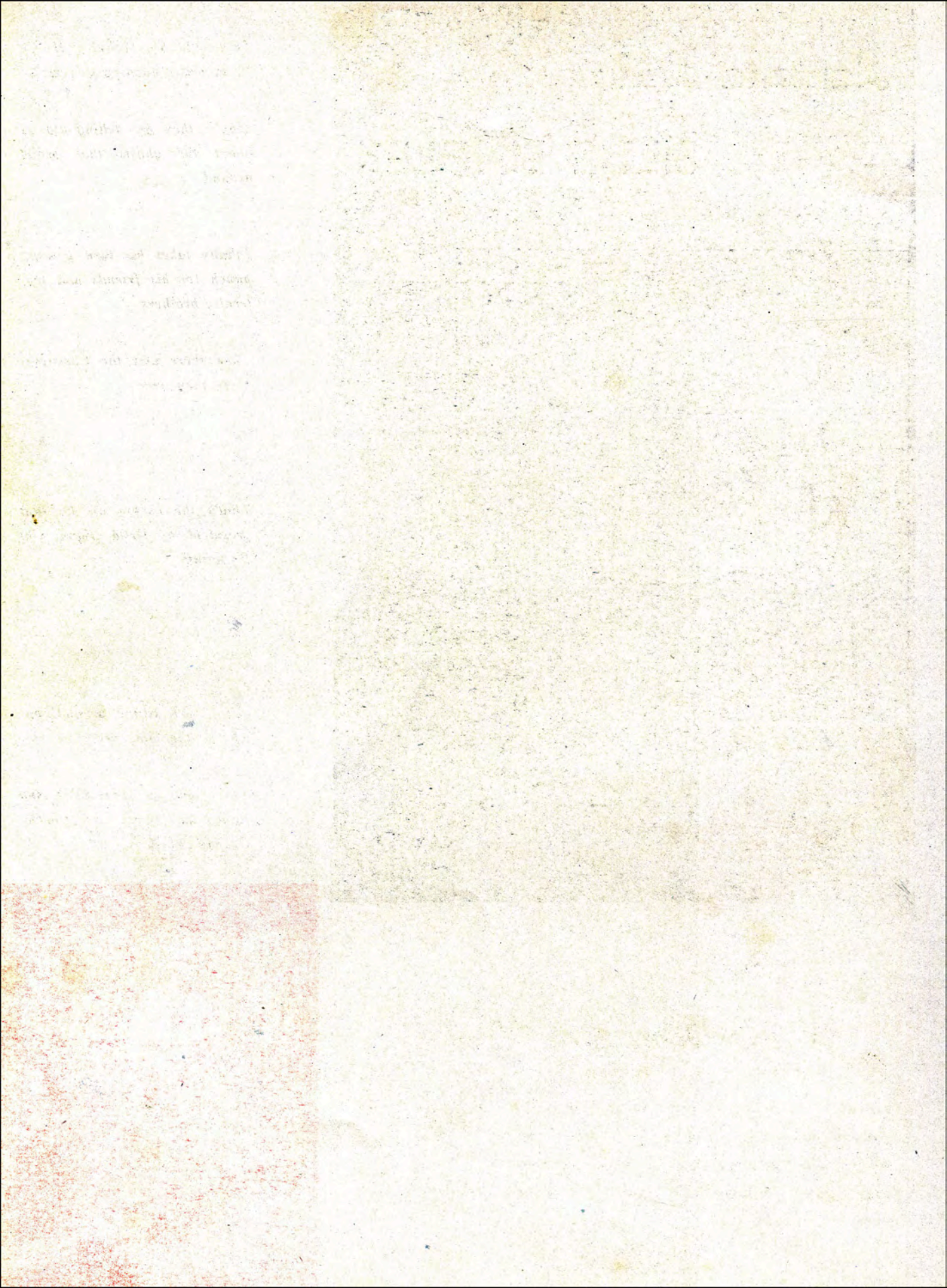


*Lantana Lady*

**BILLIE BINGLEY**











*The Delta Sig Haunted House Party was a howling success.*

*Maybe they are telling stories about the ghosts that prowl around.*

*Johnny takes his turn pouring punch for his friends and fraternity brothers.*

*Then there was the Christmas party they gave.*

*That's the corpse of the first president of Delta Sigma Chi Fraternity.*

*People are sitting around, but where's the camp fire?*

*There was a Mexican String Band and plenty of "Rancho Grande" music.*

## Who's Who and Why

Max Amann was elected to serve as president of the Student Council and the student body during his senior year, and everybody knows Max. An Agriculture major, he is a member of the FFA and Aggie Clubs. The place he calls home is Poteet.





# Who's Who and Why

Pauline Anderson is a beautiful blonde dramatic art major. Classified as a junior, she has managed to vary her activities greatly. Besides being a member of the Footlight Club, she is a member of the band, has been president of her sorority, Beta Gamma, and is the second president of the Association of Women Students.

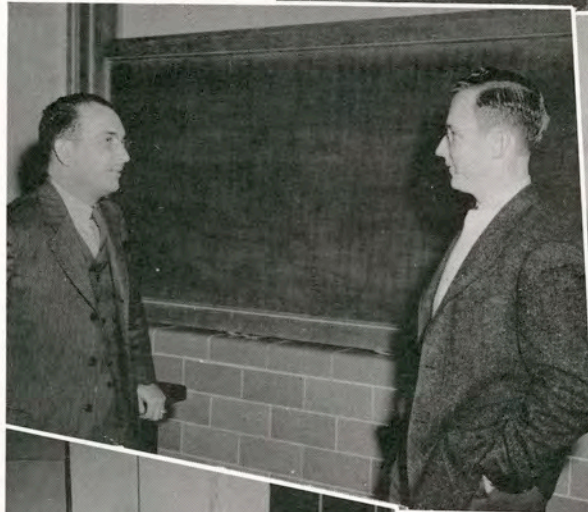


*Dr. Nierman and the ex-president of Panama, who lectured here.*



*It's this way, you see. Really very simple.*

*The Houston Symphony Orchestra flutist stops to chat a bit.*



*Mrs. Sherwood Avery, who reviewed books under the sponsorship of Delta Theta.*

*Yes, Walter, press the one he is telling you about. That key there.*







*Doris seems to think it's pretty amusing, judging from the expression.*

*That's what they call a card game, and that's what it is.*



*Pettus and Daughtry play waitress at the Kappa Sig Mexican Dinner.*

*Must be what is called what is known as interesting and amusing.*



*Evanita very graciously lights cigarette for Roy, while the rest of the Alpha Sigs look on.*

## Who's Who and Why

Big J. T. Pell has gone to New Mexico now to teach agriculture, but he isn't forgotten. He was a senior, majoring in vocational agriculture. Naturally, the Aggie and FFA Clubs claimed him as a member.







*A&I prairie schooners . . . Sun Bowl, Miners losing 23-7 . . . Javelinas over all . . . Making sure our clean Texas bugs didn't get contaminated by California fruit . . . Jensen risked his neck for this . . . After San Jose, but Bubba and Shack take things philosophically.*



## Who's Who and Why

Georgia Belyeu from Kingsville is a pride and joy of the English department. She is majoring in it, she has assisted the department and was a member of the English Club. Not only that, but she is a member of Alpha Chi. The day there was an assembly in which students expressed their opinions about national defense those who attended will remember the diminutive senior making a speech in a manner which convinced people she meant it.





*This would save tires . . . 7-14, let's go home . . . Pow-wow Cal and Arizona's assistant coach . . . Salyers and Hawkes versus Arizona . . . That's Gillespie under 400 pounds of Dono and Dog . . . Pardon us, Maurice and Roscoe . . . The Thinker: Rucker doping out Arizona strategy . . . Another California border scene . . . Name on request. She lives in Santa Monica and Dono's now in Florida.*

## Who's Who and Why

Jean Calhoun from Victoria lists business administration as her major and senior as her classification. Jean is a member of the BBA Club of which she was Sweetheart in '41 and '42. She sings in the A Cappella Choir, is a member of Delta Theta Sorority and of Alpha Chi. Completely poised, she goes along her way, charming people to the extent that she was elected a Lantana Lady this year.





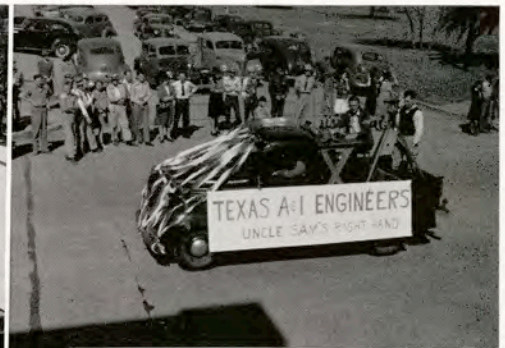


# Who's Who and Why

Then there is huge Stuart Clarkson of football fame and fortune. His outstanding work as center on the Javelina squad won him the honor of being named a Little All-American. Familiarly known as "Goof," he is majoring in history and is a senior from over Corpus Christi way. Clarkson has an affinity for politics and will talk over the situation with anybody who wants to cooperate. Likeable and good-natured, there's a goodly number who call him friend.

*There was a parade to highlight the rodeo with a patriotic all-college float.*

*The Engineers were there.*



*The DAR turned out in a Coach and Two.*

*Looks like the NGEA der-rick blew its top.*



*What—none built for two? Most distressing!*

*Pops Anderson rides in the center of Beta Gamma Sorority's prize-winning green and pink float.*





# Who's Who and Why

Helen Ray De Fratus is a slender, brown-haired girl majoring in home economics. Popular with boys and girls alike, she was elected Sweetheart of the T Association for two years and was the first president of the recently organized chapter of the Association of Women Students on the campus. This senior from Houston has been president of Alpha Sigma Sorority and is a member of Kappa Omicron Phi, national honorary home economics society.



*Heigh Ho! The Delta Sigma Chi Rangers ride again. Their Silvers look a little under-nourished.*

*Going some place, probably.*



*The nation's armed forces roll down the street.*

*The Fish hired a limousine for the occasion.*



*T Association Representatives Steinke and Nancy House.*

*Rope him, Cowboy! That prize money would feel mighty fine in any man's pockets.*





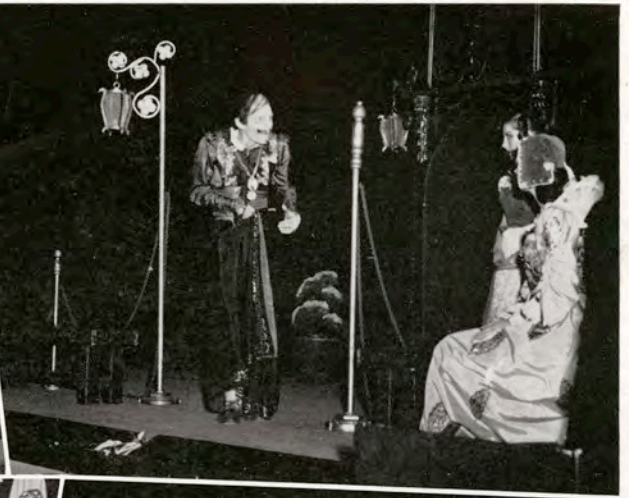
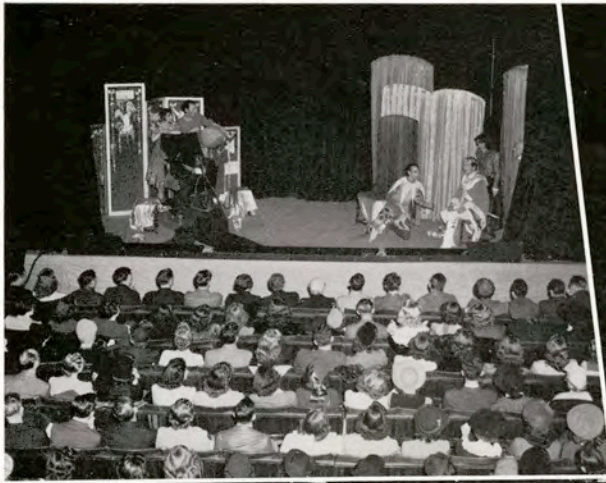
## Who's Who and Why

A junior English major from Kingsville, Betty Jo Fry, is not a believer in favoring any one activity to the exclusion and neglect of all others. Proof of this is offered by the fact that she is a member of the Forensics Society, the Press Club, the English Club and that she sang in the Campus Choir. Betty Joe is not one to say much about it but when she is asked to do something she can usually be counted on to come through. And that is a report from reliable sources.

*Everybody renewed acquaintances and made brand new ones at the first dance of the year sponsored by the Student Council. Swing and sway the college way. That's the way the dancers looked from up above. Jeanie looks happy.*







*The Chekhov Players presented Shakespeare's "Twelfth Night" here as a part of the Artist's Course Series. It would seem that the plot thickens. Plenty of action kept the audience interested. Those four were definitely not up to any good.*

## Who's Who and Why

It's a well-known fact that Emily Goehring is steady and capable. She is a senior home economics major from Runge who is deeply interested in her work. A member of various clubs, Alpha Chi, the Home Economics Club, Kappa Omicron Phi and the Hayes Club find Emily's name listed on their rolls. Then too, the members of Kappa Omicron Phi thought it would be a good idea to have her be their representative to the Association of Women Students.





*Doris Parham stepped carefully through the Beta Gamma insignia.*

*The pretty pledges posed following their presentation to the people.*

*Judging from the picture, it would seem that everybody had a good time.*

*Alicia Krug, wearing a dreamy expression and frilly formal.*

*Hmm. The chaperones appear to be in a highly jovial mood.*

*And the pink and green balloons just looked down and watched and watched.*



## Who's Who and Why

Dora Hager calls Mercedes home and the members of the annual staff call her chief on account of she is editor. Dora is a music major and played in the band before her annual duties came to take so much of her time. She is a member of the Press Club, of which she was Sweetheart this year, a member of the Student Council, and a member of Beta Gamma, of which she has been president.





*The Messiah, directed by Paul M. Riley, is the crowning musical event of the year.*

*Given just before Christmas it displays the music department's work and progress.*



*Featured this year were Doris Gourley, Sidonia Wuensche, Bess Thompson, Sidney Malone, Vernon Schliska, and Walter McPherson.*



*The A Cappella Choir, Campus Choir, Male Chorus and interested students did the choral part for the oratorio.*

*A&I's Little Symphony played and Theophil Voeks accompanied the solo vocalists.*

## Who's Who and Why

Gracious Elizabeth Jester was Lantana Queen her junior year and a Lantana Lady when she was a freshman. Her major is English and she speaks it in a soft sort of way that hints of the fact that she sings in the A Cappella Choir. A member of Delta Theta Sorority she was elected its vice-president during the spring semester of her senior year.







*The old and new court with the newly-crowned Margaret.*

*Her Majesty, His Majesty and the ladies-in-waiting.*

*Retiring Queen Elizabeth Jester and Finley Vinson.*

*Club representatives came to pay homage.*

*The Lantana Ladies and their escorts.*

*Some more representatives, including high school dukes and duchesses.*

*Football season and cheer leaders.*

## Who's Who and Why

Kirk McCord was the fellow with the suave manner that everybody knew. The past tense is used because he is now in the United States Marines and, of course, no longer on the campus. McCord majored in journalism and was a junior from Kingsville. Last year he announced the Coronation and he was president of Kappa Sigma Nu when he left A&I. Besides that, he occasionally contributed an editorial to the South Texan.





*The Coronation begins with Master of Ceremonies Dub Willis giving a review of the year.*

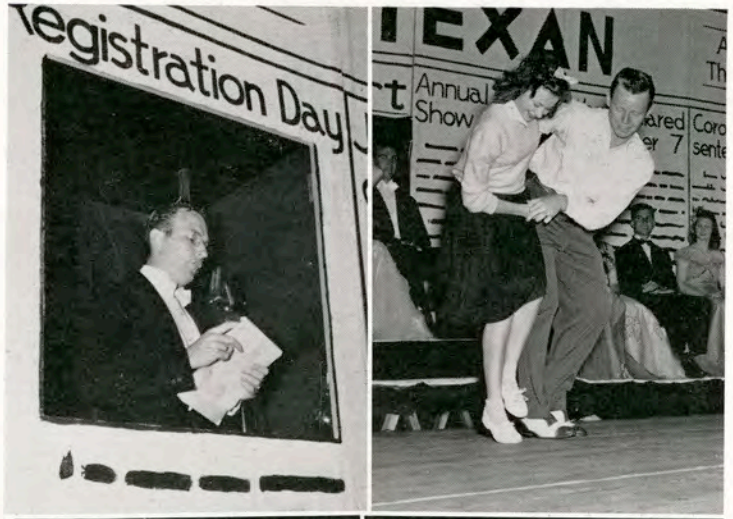
*Jitterbugs Wiederhold and Rector drew praise from the spectators.*

*A&T's patriotism was portrayed by this military tap.*

*A farce on rush week.*

*Her Majesty, Queen Margaret, and King Max.*

*Pledging Huppertz can't decide.*



## Who's Who and Why

Ruth McRoberts from Kingsville is a business administration major and a member of the BBA Club. Quiet spoken Ruth belongs to Alpha Chi and is one of the people who knows. People know she knows, too. A member of Delta Theta Sorority, she has served a term as its head and she has held down a lot of other offices too.



*Christmas holidays were celebrated by the Delta Sigs with a breakfast.*



*The Seale Hall boys honored the Cousins Hall girls with a formal at the Yule season.*



*Phyllis and Dick look quite pleased with everything in general.*

*Leading the Faculty Party Grand March with good will and gusto.*



*Colston, Mrs. Littlejohn, Daphne, Gipe and Dub sit one out.*

*This was another one of the parties that helped put students in a mood of good cheer.*



## Who's Who and Why

Roscoe Maris is in the Air Corps now, but he used to be a guard on the Javelina squad. A member of the T Association, he represented them on the Student Council, of which he was elected vice-president. He was a senior from McAllen and his major was in business administration.





*The Press Club demanded a forfeit, and Pup paid up.*

*We just can't seem to figure out who they are. What's your guess?*



*They did a lot of dancing that night, a whole, whole lot.*

*Whoops! We guess she was reluctant.*

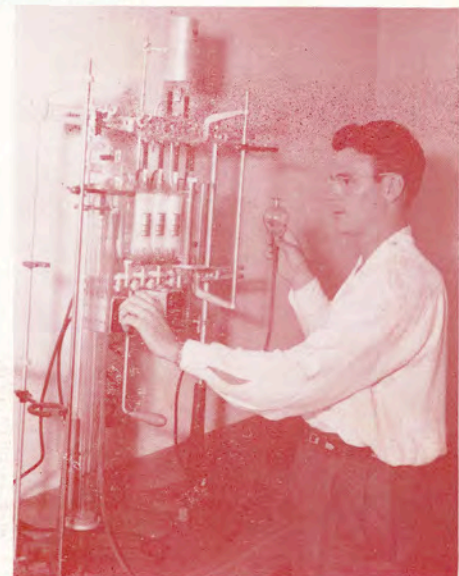


*Just an annual Backward Dance Custom. That's what it's all about.*

*Dora Hager, Press Club Sweetheart, has her posies presented by Dub.*

## Who's Who and Why

Richard Nevill from Dallas is majoring in natural gas engineering and doing very well at it too. He has been awarded a \$4,000 scholarship to the Institute of Gas Technology which will lead to a doctor's degree. Before Dick came to A&I, he attended the University of Texas where he was a member of Pi Kappa Alpha Fraternity. He has been president of the Engineer's Club and is an Alpha Chi member.







# Who's Who and Why

Sterling Rhea is a general engineer, a senior and he makes his home in Beeville. He belongs to Alpha Chi, was president of the Engineers Club for a term; has been in the band and is a member of the Baptist Student Union. That makes up quite a list, don't you think? Thought you would.

*Play night is where everybody goes to have fun free of charge.*



*Say, Rosemary, what is the matter with Stasney's car?*



*Colston, gone with the Marines, draws back while Arnold watches.*



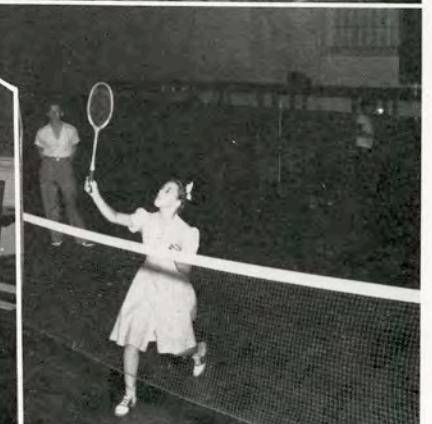
*Nothing like a fast game of ping pong to get things going.*



*No, they aren't on deck. Just a game of shuffleboard in the gym.*



*V. B. Lawrence couldn't play poker. Look at that grin!*







*Homecoming assembly with everybody getting the Old Spirit!*

*There was a great big bonfire at which everybody yelled and watched things burn the night before the game with Sam Houston.*



*Those are people who came to the Choir Breakfast.*

*Those are a lot more people who came to the Choir Breakfast.*



*Well, well, those choir people just keep popping up.*

*A couple of exes talk over old times. Those were the days.*

## Who's Who and Why

Orlan Sawey is a senior English major, was a member of the English Club and belongs to the Creative Writers Club. They say Sawey writes poetry and belongs to the Border Poets Association. A member of Alpha Chi he has sung in the Male Chorus, worked for the English Department and kept himself busy in a general sort of way. Home is Sabinal.







*That's the cast for "June Mad," Footlight Club production.*

*Norman, the villain in disguise, makes love to Ann.*



*Now what do you suppose they were waiting on? It wasn't streetcars.*

*Were Porter and Charlie going out or coming in?*



*Another T Jac crowd, just idling a pleasant hour.*

*Barbara, Ella Beth, and Alicia beam in unison. We must have been winning.*

## Who's Who and Why

Then there is Paul Veale of Harlingen who is majoring in business administration. He is a senior, too, and a member of the BBA Club. Added to that is his membership in the International Relations Club and the national honorary society Alpha Chi. People who live in the dormitories know him as the fellow who smiles as he takes in their money.





*On with the auditorium  
and off with the palms.*

*That is what they call "lay-  
ing the groundwork," or  
foundations, or something.*

*It takes a lot of plotting  
and planning for these  
things, you know.*

*Heave Ho . . . out and  
away by the very roots.*

*"Now about those speci-  
fications," said one gentle-  
man to the other.*

*The documents being pour-  
ed over are quite possibly  
blue prints. Quite possibly.*



## Who's Who and Why

W. B. Willis, much better known as "Dub," is a busy man. Unlike a lot of busy men, "Dub" really gets a lot accomplished. For instance: he is business manager for publications, president of Delta Sigma Chi, president of the Press Club and head waiter at Loftin Hall. With all this he manages to squeeze in time to be a natural gas engineer, which is not child's play in any man's language. Corpus is called home.





*Margy Dell and Hibler stopped talking and looked around to see.*

*Miss Bible told fortunes at the Y.W.C.A. Carnival.*



*Willis, garbed in football helmet and snarl, charges the field "a la Sacks!"*



*Just a friendly card game among buddies, but they look serious about it.*

*House party at the AWS Big and Little Sister tea at school's beginning.*

*Peek is probably telling the lady she dances divinely.*



*Davis, Harvey, Brannon, and Guttman just sit and talk.*

*Joyce is looking a bit coy, while Dyer just looks.*



## Who's Who and Why

Myrtle Wolfshohl is a hard-worked senior. She is hard-worked because she edits the South Texan, is a member of the Press Club, debates and then she is in Alpha Chi, which proves something. From McAllen, Myrtle finally chose economics as her major and went to work on it with a will. We are told she holds liberal views and puts up a good argument for them.







ORGANIZATIONS





LEGACION DE COSTA RICA  
WASHINGTON

21 de marzo de 1942

Miss Dora Hager  
The 1942 EL RANCHO  
The Texas College of Arts  
Kingsville, Texas

Estimada senora Hager:

Tengo e especial placer al contestar su atenta carta de febrero último. Muy atinada me parece la idea de haber escogido el panamericanismo como tema para el anuario escolar del cuerpo estudiantil del Colegio de Artes e Industrias de Texas.

Por su muy digno medio me permito felicitar muy calurosamente al Estudiantado y Personal del Colegio por el entusiasmo con que han emprendido el cada vez más necesario propósito de procurar un mayor acercamiento entre las Naciones de las Américas.

Con toda consideración soy de Usted su Atto. S. S.

Luis Fernández  
Ministro de Costa Rica

# A&I Beauty

Jean is poised, the sort of girl in which there has been a happy combination of intelligence and aristocratic good looks.



*Lantana Lady*

JEAN CALHOUN









# The A Cappella Choir . . .

Fall and Spring

BOB DAVIS ..... *President*

JOHN BARKLEY ..... *Vice-President*

RUTH McROBERTS ..... *Secretary-Treasurer*

LEO GOLTZMAN ..... *Reporter*

PAUL M. RILEY ..... *Faculty Adviser*



BACK ROW: WINFREY, GOLTZMAN, MONTGOMERY, HARRELL.  
 SECOND ROW: McPHERSON, DIETZ, MALONE, SCHLISKA, BARKLEY, THOMPSON, HOLLEY,  
 GOURLEY, SANDERS, ROGERS, WUENSCHIE, PRY, BOWDEN, RILEY.  
 FRONT ROW: HIESERMANN, HAUSMANN, GILLESPIE, McCURDY, PARTEN, VANDERWICK-  
 EN, McROBERTS, JESTER, CALHOUN, HOBRECHT, HARPER, FRY, BROWN, BINGLEY, GAR-  
 NER, HANSEN, EDDINS.





# Javelina Band . .

HAROLD COOK ..... *President*

CLAYTON LATTIMORE ..... *Vice-President*

RICHARD RASMUSSEN ..... *Secretary-Treasurer*

BETTY PLATT ..... *Reporter*

ERWIN ERNST ..... *Faculty Adviser*

BABETTE RHINEHART ..... *Sweetheart*



BACK ROW: BINGLEY, VOLLMER, PLUMMER, BOHNER, WHITE, McLEAN, ERNST, GOLTZMAN, J. COOK, MERTENS, MITCHELL, HAUSMANN, HARRELL, LANDRUM, STEINBERG.

THIRD ROW: LEWIS, LOWE, RIGGS, ADKINS, BENNET, CHESNUTT, SCOGIN, LATTIMORE, FRANCIS, BYRNE, BROWN.

SECOND ROW: TREPTOW, FRITTS, RUCKMAN, FAULK, ROGERS, FOWLER, SCOTT, FARRELL, THOMAS, BUTCHER, BROWN, R. RASMUSSEN, TERRY.

FIRST ROW: TRIBBLE, MELTON, WOODWARD, H. COOK, M. RASMUSSEN, DODD, RHEA, LAECHELIN, KIDDER, RICHARDS, PLATT, McCLUNG, RHINEHART, McPHERSON, BAIN, WINFREY.



# The Male Chorus . . .

FALL and SPRING

NORMAN THOMAS ..... *President*

VERNON SCHLISKA ..... *Vice-President*

WALTER MCPHERSON ..... *Secretary-Treasurer*

JOHN DIETZ ..... *Reporter*



BACK ROW: PRY, HARRELL, THOMAS, DIETZ, MITCHELL, MALONE, PLUMMER, GOLTZMAN.  
FRONT ROW: ROGERS, WUENSCH, SPENCE, SCHLISKA, MCPHERSON, KELLEY, VOEKS.





# N. G. E. A. . . .



BACK ROW: WILLIS, KUYKENDALL, DOTTERWEICH, WADDELL, BRYANT.  
 FRONT ROW: HARRISON, NEVILL, MOONEY, SHOEMAKER, COOK.



## FALL and SPRING

- VANDIVER MOONEY ..... *President*
- ROBERT SHOEMAKER ..... *Vice-President*
- RICHARD NEVILL ..... *Secretary-Treasurer*
- DR. F. H. DOTTERWEICH ..... *Sponsor*







# Alpha Chi . . .



BACK ROW: ROLF, CURTIS, NEVILL, BUCKHORN, HOLMES, HALL, YANTA, MICHAEL, WHITE, CORNETT, McADA, HORMUTH, MOONEY, VEALE.

FRONT ROW: RHEA, ROGERS, CALHOUN, KORGES, FRY, HAERTIG, RHINEHART, SPEARS, CASON, McROBERTS, BURSON, MANNING.



FALL	OFFICERS	SPRING
PAUL VEALE	<i>President</i>	PAUL VEALE
CALVIN RASMUSSEN	<i>Vice-President</i>	CALVIN RASMUSSEN
FLORENCE SPEARS	<i>Secretary</i>	JEAN CALHOUN
GEORGIA BELYEU	<i>Treasurer</i>	GEORGIA BELYEU
MYRTLE WOLFSHOHL	<i>Reporter</i>	MYRTLE WOLFSHOHL

DR. J. R. MANNING	} <i>Faculty Advisers</i>
BERNICE ROLF	
V. F. MICHAEL	







# Aggie Club . . .



BACK ROW: McNEIL, SCHULTZ, AMANN, BUESCHER, HILL, GARDIER, WEEKLEY, WILSON, BELYEU, HART, PATTERSON.  
 THIRD ROW: WUENSCH, BISSET, HUGHES, FIEDLER, DUCKWORTH, RAINE, WESTERHOLM, FIEDLER, TORNOW, HOWARD, FORD.  
 SECOND ROW: CAGE, RIPPER, KING, BOST, DOWNS, BELL, McCASKILL, REAGAN, GOODE, COOK.  
 FRONT ROW: ALBRIGHT, SEIFERT, GUEDIN, STRAIT, KASTEN, FROMME, ALBRIGHT, PARSONS.



## FALL

- J. T. BELL ..... *President*
- ROBERT BOST ..... *Vice-President*
- HAROLD R. McCASKILL ..... *Secretary*
- L. E. DOWNES ..... *Treasurer*
- S. V. BURKS ..... *Parliamentarian*
- R. J. COOK ..... *Faculty Adviser*
- TRAVIS EDWARDS ..... *Song Leader*
- C. K. FRASER ..... *Yell Leader*
- J. T. RUSSELL ..... *Athletic Director*
- GERALD ELLIFF ..... *Pitchfork Wielder*



# Aggie Club . . .

SPRING

HAROLD McCASKILL ..... *President*  
 TRAVIS EDWARDS ..... *Vice-President*  
 L. E. DOWNES ..... *Secretary*  
 JAMES McNEIL ..... *Treasurer*  
 S. V. BURKS ..... *Parliamentarian*  
 R. J. COOK ..... *Faculty Adviser*  
 JAMES FARLEY ..... *Song Leader*  
 TAYLOR CAGE ..... *Yell Leader*  
 ELMO MEYERS ..... *Athletic Director*  
 CURTIS REAGAN ..... *Pitchfork Wielder*



BACK ROW: MARTIN, RUSSELL, LANSFORD, BOX, COE, BUSBY, FARLEY, GARZA, EDWARDS.  
 FRONT ROW: CALHOUN, HELLER, BUFORD, LOEWE, MEYER, BURKS.





# Footlight Club . . .



BACK ROW: HOLLAND, LEWIS, ANDERSON, PARKER, CAIL, GARDIER, WUENSCH, STAGGS, BAKER, BARNHART, DOGGETT.  
FRONT ROW: TUTT, KAUFER, HARBISON, KRUG, THOMAS, FRY, ADKINS, PECAUT.



## FALL and SPRING

- CAROLYN JEAN FRY ..... *President*
- NORMAN THOMAS ..... *Vice-President*
- ALICIA KRUG ..... *Secretary-Treasurer*
- BARBARA DOGGETT ..... *Reporter*
- MILDRED PECAUT ..... *Faculty Adviser*
- HAZEL HARBISON ..... *Program Chairman*
- MARY KERN TUTT ..... *Ass't Program Chairman*



# Kappa Sigma Nu . . .

FALL and SPRING

KIRK McCORD ..... *President*

ANDY HUNTER ..... *Vice-President*

CARL WILSON ..... *Secretary-Treasurer*

PORTER PILE ..... *Parliamentarian*

CLAUDE HAISLEY ..... *Reporter*

JOHN BARKLEY ..... *Pledge Captain*

WELDON VORPAHL ..... *Corresponding Secretary*

DR. F. H. DOTTERWEICH }  
 DOCK BOYLE } *Faculty Advisers*  
 PAUL COOPER }  
 RICHARD KLEBERG, JR. }



BACK ROW: R. MARLER, CLORE, THOMPSON, ESTES, WIRTH, BARBER, McNAIR, RICHARDS, MOORE, MULLER, FOSTER.

FRONT ROW: TERRELL, VORPAHL, GILSTRAP, PILE, HAISLEY, McCORD, BARKLEY, W. MARLER, KENNEDY, GRIFFITH.





# Delta Sigma Chi . . .



BACK ROW: McCULLEY, R. DAVIS, C. A. DAVIS, MCBURNETT, MORRIS, HARPER, MANNING.  
FRONT ROW: THOMAS, CUMMINS, WILLIS, CYPHER, LEE.



## FALL

- W. B. WILLIS ..... *President*
- D. C. CRYER ..... *Vice-President*
- VERNON SAVAGE ..... *Secretary*
- JOHN CYPHER ..... *Exchequer*
- BOB DAVIS ..... *Sergeant-at-Arms*



# Delta Sigma Chi . . .

SPRING

W. B. WILLIS ..... *President*

NORMAN THOMAS ..... *Vice-President*

FRANK HARPER ..... *Secretary*

JOHN CYPHER ..... *Exchequer*

SAM MCBURNETT ..... *Sergeant-at-Arms*



BACK ROW: LONG, SCHLISKA, COLSTON, PEEK, FRITTS, BLUDWORTH, CHANDLER, WHITSON, DIETZ, DEAN, GUTTMAN.

FRONT ROW: RECTOR, MCBURNETT, HINKLE, BRANNON, MALONE, JOHNSTON, LLOYD, TOMSON, DYER.





# Press Club . . .



BACK ROW: YAKEY, KRIEDEL, ROBERTS, WOLFSHOHL, HAGER, GIPE.  
FRONT ROW: POND, HOLMES, WILLIS, MONTGOMERY.



FALL and SPRING

- W. B. WILLIS ..... *President*  
 BILL HOLMES ..... *Vice-President*  
 HOWARD POND ..... *Secretary-Treasurer*  
 RUFUS LANDERS ..... *Sergeant-at-Arms*



# Alpha Sigma . . .

FALL	OFFICERS	SPRING
HELEN DE FRATUS	<i>President</i>	ANNETTE MARTIN
FAY SMITH	<i>Vice-President</i>	BETSY KIDDER
JEAN ANDREWS	<i>Recording Secretary</i>	MARIE SCHMIDT
JOYCE HOBRECHT	<i>Corres. Secretary</i>	FAY SMITH
SARAH PORTER	<i>Treasurer</i>	MINNIE RATLIFF
RAY SASSE	<i>Reporter</i>	EVANITA PARKER
FAY SMITH	<i>Sorority Council Representative</i>	HELEN DE FRATUS



BACK ROW: HORNE, M. THOMAS, SCHMIDT, M. G. THOMAS, HOLLAND, LAWRENCE, GISE, WILLIAMS, MCGREGOR, STEVES.  
 SECOND ROW: FORD, KIDDER, MULLER, SMITH, DEFRATUS, PORTER, HOBRECHT, MARTIN, DEAN.  
 FRONT ROW: RATLIFF, KIETHLEY, LITTLEJOHN, PARKER.





# Beta Gamma . . .



BACK ROW: DRENNAN, RAMSEY, J. McNEIL, VOLLMER, HAGER, HARDY, PERRENOT, WALSH, PARHAM, MADDUX, BLACKSTOCK, ARBUTHNOT.  
MIDDLE ROW: ANDERSON, PERSON, MELTON, LANDRUM, EDDINS, BURSON, PLATT, ALEXANDER.  
FRONT ROW: RHINEHART, BLUNTZER, HANSARD, GOURLEY, K. McNEIL, McCLUNG.



## FALL

- PAULINE ANDERSON ..... *President*  
 ELLA BETH MELTON ..... *Vice-President*  
 CHARLOTTE PERSON ..... *Recording Secretary*  
 LEONE EDDINS ..... *Treasurer*  
 BABETTE RHINEHART ..... *Parliamentarian*  
 BETTY PLATT ..... *Reporter*  
 DOROTHY RUTH LANDRUM ..... *Corresponding Secretary*  
 FRANCES HARDY ..... *Historian*  
 LOUISE BURSON ..... *Sorority Council*

## FACULTY ADVISERS

- MRS. DONALD ALEXANDER    MISS BETTY LOVE RUGELEY



# Beta Gamma . . .

SPRING

- ELLA BETH MELTON ..... *President*  
 BETTY PLATT ..... *Vice-President*  
 LOUISE BURSON ..... *Recording Secretary*  
 LEONE EDDINS ..... *Treasurer*  
 BARBARA BALTIS ..... *Parliamentarian*  
 STELLA PEEKS ..... *Reporter*  
 JUNE McCLUNG ..... *Corresponding Secretary*  
 CHARLOTTE PERSON ..... *Historian*  
 PAULINE ANDERSON ..... *Sorority Council*



BACK ROW: WALLACE, BRETT, KALLAS, TANNER, DOGGETT, TRIBBLE, O'NEALL, FIELDS, RICHARDSON, RUCKMAN, KRUG.

MIDDLE ROW: TRUE, WIEDERHOLD, WALTERS, VERTREES, CRAIG, MILLER, FAULK, BALTIS, RUGELEY, RINGWALD.

FRONT ROW: SCHAEFER, TUMLINSON, JACKSON, BINGLEY.





# Delta Theta . . .



BACK ROW: BEASLEY, HARWOOD, McROBERTS, HENDRICKS, CALHOUN, BLOXOM, WIMBISH, YAKEY, HAUSMANN, HALEY, PETTUS.

FRONT ROW: BROWN, SIMMONS, DAUGHERTY, WILLIAMS, HOUSE, GIBBS, CROW, JESTER, SIMS, ROBERTS, HARPER.



## FALL

- VALMIA GIBBS ..... *President*  
 MARGARET WILLIAMS ..... *Vice-President*  
 BETTY RUTH CROW ..... *Secretary*  
 NANCY HOUSE ..... *Treasurer*  
 KATHRYN ROBERTS ..... *Reporter*  
 JEANNE BAKER ..... *Historian*  
 ELIZABETH JESTER ..... *Rep. to Sorority Council*

MRS. PAULINE W. JESTER }  
 MILDRED PECAUT } *Faculty Advisers*  
 JOHNNIE MAE DE MAURI }



# Delta Theta . . .

MARGARET WILLIAMS ..... *President*  
 ELIZABETH JESTER ..... *Vice-President*  
 BETTY RUTH CROW ..... *Secretary*  
 NANCY HOUSE ..... *Treasurer*  
 BESS HAL YAKEY ..... *Reporter*  
 JEANNE BAKER ..... *Historian*  
 VALMIA GIBBS ..... *Rep. to Sorority Council*

## FACULTY ADVISERS

PAULINE W. JESTER            MILDRED PECAUT



BACK ROW: FAULKNER, WOODERSON, HARWOOD, RIDGEWAY, ORR, GOTTLICH, AMSDEN, BARNHART, BAKER, M. WOOLSTON, NELSON, LEE, STAGGS, F. BROWN, TERRY, B. BROWN.  
 FRONT ROW: J. BROWN, FROMME, KAUFER, SCOTT, BENNICK, THWEATT, ROUSE, BOUCHER, J. WOOLSTON, GILLESPIE, HARVEY, MARSTERS, HOBRECHT.







# Kappa Zeta . . .



BACK ROW: HAFER, TUTT, HAERTIG, CASON, BLANTON, TROST, BRANCH, M. HIESERMANN, PARTEN, M. E. McADA, HARRIS.  
FRONT ROW: BROWN, GLASCOCK, W. HIESERMANN, ROSAMOND, McCURDY, G. McADA, TOBIAS.



## FALL and SPRING

- VIRGINIA McCURDY ..... *President*
- WINNIE HIESERMANN ..... *Recording Secretary*
- HAZEL GLASCOCK ..... *Treasurer*
- MARY EVELYN McADA ..... *Reporter*



# Kappa Zeta . . .

FALL and SPRING

BETTY SUE ROSAMOND ..... *Vice-President*

GRACE McADA ..... *Corresponding Secretary*

DOROTHY TOBIAS ..... *Historian*

MAMIE BROWN ..... *Faculty Adviser*

MARGARETTE HARRIS ..... *Constitution Chairman*



BACK ROW: MASTERSON, RINGHAM, D. A. SMITH, JONES, L. SMITH, MURPHY, S. MARTIN, VAUGHN, P. MARTIN, BROWN, McCLAUGHERTY, WHITE.

FRONT ROW: TRUE, NUCKOLS, FRY, TITTLE, SIMONS, SEDWICK, KELLEY, LAECHLIN, RICHARDS, HURLBUT, PATTERSON.





# Hayes Club . . .



BACK ROW: SUGAREK, SEIFERT, GYNES, JENSEN, JENSEN, GOEHRING, VARGO.  
 FRONT ROW: ZEZULA, MILLER, MASTERSON, YANTA, LAWSON, REVEREND BAUMGARTNER.



## FALL and SPRING

- VALERIA YANTA ..... *President*
- MARY KELLER ..... *Vice-President*
- PATSY HUPPERTZ ..... *Secretary*
- HENRY KOHUTEK ..... *Treasurer*
- PATSY HUPPERTZ ..... *Reporter*



# Baptist Student Union . . .

FALL and SPRING

- STERLING RHEA ..... *President*  
 JOHN BOONE ..... *Vice-President*  
 JO McNEIL ..... *Vice-President*  
 KATHRYN APPLEWHITE ..... *Vice-President*  
 JAMES MULLENS ..... *Secretary*  
 DAULTON BISSETT ..... *Treasurer*  
 JUNE McCLUNG ..... *Music Director*  
 ANNA GRIMES ..... *Reporter*  
 MRS. JIM REESE ..... *Adviser*  
 IRENE HIGGS ..... *Student Secretary*  
 REV. J. K. SIMMONS ..... *Pastor*



BACK ROW: GRIMES, SHULTS, SEDWICK, RIDGEWAY, McCLUNG, ROGERS, TITTLE, McNEIL, REESE, SIMMONS.  
 FRONT ROW: HIGGS, APPLEWHITE, RHEA, McNEILL, MULLENS, BISSETT.





# B. B. A. . . .



BACK ROW: EDDINS, MALONE, CRAIG, GIPE, CALHOUN, MCBURNETT, CRYER, BROCK, BOWDEN, CHILTON, VEALE, MEUTH, MANNING.  
FRONT ROW: ROLF, WALLACE, RIGGS, RICHARDSON, WOODERSON, TUMLINSON, MCCURDY, CASON, BARKLEY, MCROBERTS, SPEARS.



## FALL

- SAMMY FUGAT ..... *President*
- BOB BATSELL ..... *Vice-President*
- LOUISE BURSON ..... *Secretary*
- LOUISE BURSON ..... *Treasurer*
- PAUL VEALE ..... *Parliamentarian*
- ALINE CRAIG ..... *Reporter*
- BILL TERRY ..... *Athletic Director*







# Kappa Omicron Phi . . .



BACK ROW: KELLER, SMITH, LEE, NEVILL, HALEY, DE FRATUS, FEATHERLING, MAST, DE MAURI.  
 FRONT ROW: BROWN, GLASCOCK, GOEHRING, McADA, YANTA, TOBIAS.



FALL	OFFICERS	SPRING
HAZEL GLASCOCK	<i>President</i>	HAZEL GLASCOCK
MARY KELLER	<i>Vice-President</i>	MARY KELLER
EMILY GOEHRING	<i>Secretary</i>	EMILY GOEHRING
VALERIA YANTA	<i>Treasurer</i>	VALERIA YANTA
LILLIAN LEE	<i>Reporter</i>	LILLIAN LEE
MARY EVELYN McADA	<i>Keeper of Archives</i>	MARY EVELYN McADA

## FACULTY ADVISERS

CLARA MAST

JOHNNIE MAE DE MAURI



# International Relations Club . . .

FALL	OFFICERS	SPRING
JOE McNEIL	<i>President</i>	DOROTHY FOSTER
MARY KERN TUTT	<i>Vice-President</i>	KATHRYN GERRY
LEROY WOOLLETT	<i>Secretary-Treasurer</i>	GAYNELLE WAGNON
FRANCES HARVE	<i>Reporter</i>	JO McNEIL
DR. J. A. RICKARD	<i>Faculty Adviser</i>	DR. J. A. RICKARD
	<i>Parliamentarian</i>	HENRIETTA SEIFERT



BACK ROW: DOVE, McCLAUGHERTY, RINGHAM, FOSTER, GYNES, WAGNON, SEIFERT, KRAMER.  
 FRONT ROW: STATON, HARVE, McNEIL, WOOLLETT, RICKARD.





# Delta Sigma Nu . . .



BACK ROW: WADE, LEE, FELS, HORNE, DODSON, ENGLEKING, WHITE, M. E. McADA, MARTIN, YANTA.  
MIDDLE ROW: BIBLE, G. McADA, SPENCER, DOWNING, HALEY, GOEHRING, ROSAMOND, APPLEWHITE,  
MAST.  
FRONT ROW: KELLER, HARWOOD, GLASCOCK, SIMS, FIELDS.



## FALL

EMILY GOEHRING ..... *President*

EVIDNA DOWNING ..... *Vice-President*

BETTY DAUGHTRY ..... *Secretary*

JEWEL MARGARET SIMONS ..... *Treasurer*

LILLIAN LEE ..... *Reporter*

ALINE MCKENZIE  
CLARA MAST  
FAYE BIBLE  
JOHNNIE MAE DE MAURI

} *Faculty Advisers*



# Delta Sigma Nu . . .

SPRING

KATHRYN APPLEWHITE ..... *President*

MARY EVELYN McADA ..... *Vice-President*

DELLA RUTH DEAN ..... *Secretary*

MARGY DELL RAY ..... *Treasurer*

PATRICIA MARTIN ..... *Reporter*

ALINE McKENZIE

CLARA MAST

FAYE BIBLE

JOHNNIE MAE DE MAURI

} *Faculty Advisers*



BACK ROW: DeMAURI, CARVER, SIMONS, TROST, BALLINGER, McKENZIE, ENGELS, STOLLEY, SEDWICK, DEAN.

MIDDLE ROW: E. BROWN, DAVIS, D. BROWN, FEATHERLING, RAY, SIMONS, MARTENS.

FRONT ROW: BOST, KNIGHT, TOBIAS, STEIN, HAFFER.





# Amado Nervo . . .



BACK ROW : ADAME, J. GARCIA, R. GARZA, L. GARZA, PENA, N. GARZA, MENDIOLA, GONZALES.  
FRONT ROW : CASAS, PEREZ, E. GARCIA, BARRERA, MORENO, C. SALAZAR, T. GARZA, CARRALES, MARTINEZ.



FALL	OFFICERS	SPRING
SANTOS FLORES	<i>President</i>	JOSE G. MENDIOLA
RAFAEL FLORES	<i>Vice President</i>	RODOLFO GARZA
RAMONA FIGUEROA	<i>Secretary</i>	ALONSO RAMIREZ
EDELMIRO CANTU	<i>Treasurer</i>	NERIO GARZA
ROBERT LEO	<i>Parliamentarian</i>	ROBERT LEO
IRMA PEREZ	<i>Reporter</i>	IRMA PEREZ

AMINTA GONZALES }  
PAULINE GOODE } *Faculty Advisers*  
J. D. SMITH }



# Cousins Hall House Council . . .

FALL and SPRING

MARY KELLER ..... *President*

BETSY KIDDER ..... *Vice-President*

KATHRYN ANN BLUNTZER ..... *Secretary-Treasurer*

ANNIE LEE LITTLEJOHN ..... *Faculty Adviser*



STANDING: McMANUS, KELLER.  
 BACK ROW: LITTLEJOHN, TAYLOR, BLUNTZER, MADDUX, HOBRECHT, KIDDER, HARWOOD,  
 McNEIL.  
 FRONT ROW: MANNERING, SPEARS, KAUFER.





# The South Texan . . . Always



LAWRENCE, ROBERTS, POND, RAMSEY, KRIEGEL, FRY, YAKEY



MYRTLE WOLFSHOHL, KATHRYN ROBERTS

## EDITORIAL STAFF

- MYRTLE WOLFSHOHL ..... *Editor-in-Chief*  
 KATHRYN ROBERTS ..... *Associate Editor*  
 BILL HOLMES ..... *Sports Editor*  
 BESS HAL YAKEY ..... *Society Editor*

## BUSINESS STAFF

- W. B. WILLIS ..... *Business Manager*  
 VIRGINIA BELL LAWRENCE ..... *Ass't Business Manager*  
 HOWARD POND ..... *Circulation Manager*

## CONTRIBUTING STAFF

- NENA RAMSEY, BETTY JO FRY, JULIA KRIEGEL, MARIE BENNETT, BILL KENNEDY, STELLA PEEKS, MARGARET MASTERSON, TRAVIS EDWARDS, RICHARD BRIGGS, CLAUDE SUMMERLIN.



# A Winner in Intercollegiate Competition

After twice winning the Class B newspaper award, the South Texan last year was placed in the A division of the Texas Intercollegiate Press Association and finished second only to North Texas State's Campus Chat, champion for three consecutive years.

A&I journalists walked off with a large share of the individual awards presented at the TIPA convention at Huntsville. Editor Myrtle Wolfshohl won first place in news writing; Advertising Manager W. B. (Dub) Willis prepared the best advertisement, and Sports Editor Bill Holmes took top honors in the sports story contest.

Second places were won by Willis in photography and Holmes in sports column. Nena Ramsey's poem placed third.

Five delegates and Sponsor O. M. Montgomery attended the convention, arranged by Sam Houston State Teachers College. The host school overdid itself in preparing a warm reception because the first night they were there the hotel in which Bess Hal Yakey and Kathryn Roberts were staying burned down. A pair of shoes apiece was the only loss sustained by the girls, although some delegates lost entire wardrobes.



LAWRENCE, WILLIS, YAKEY, HOLMES

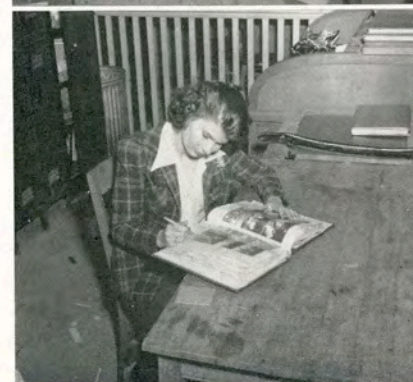


KENNEDY, WILLIS, HOLMES AND WOLFSHOHL





# 1942 El Rancho . . . A Record



DODIE HAGER, BESS HAL YAHEY

DORA (Dodie) HAGER ..... *Editor-in-Chief*

BESS HAL (Bessel) YAHEY ..... *Associate Editor*

W. B. (Dub) WILLIS ..... *Business Manager*

BILL HOLMES ..... *Sports Editor*

MARJORIE GIPE ..... *Art Editor*

HOWARD POND ..... *Photographer*

BARBARA DOGGETT  
 DOROTHY RUTH LANDRUM  
 BARBARA BALTIS  
 KATHRYN O'NEILL

} *Assistants*

INEZ SIMMONS ..... *Coronation Director*

## ADVISERS

O. M. MONTGOMERY      GEORGE W. McCULLEY







# A&I Ex-Students . . .



FINLEY VINSON, *President*



GARDNER  
ATKINS



GALIGA  
GILLETTE



FINLEY VINSON, *Corpus Christi* ..... *President*

MAURICE PIPKIN, *Brownsville* ..... *Vice-President*

JOHN GILLETTE, *Kingsville* ..... *Secretary-Treasurer*

MRS. ED GREEN, *Harlingen*  
 JOE ROB GARDNER, *Baytown*  
 LAURA ATKINS, *Poteet*  
 HENRY MOSS, *Devine*  
 J. W. GALIGA, *Sinton* } *Executive Committee*

DEAN L. J. SMITH ..... *Faculty Adviser*

SAM FORE, JR., *Floresville* .... *Board of Directors Adviser*



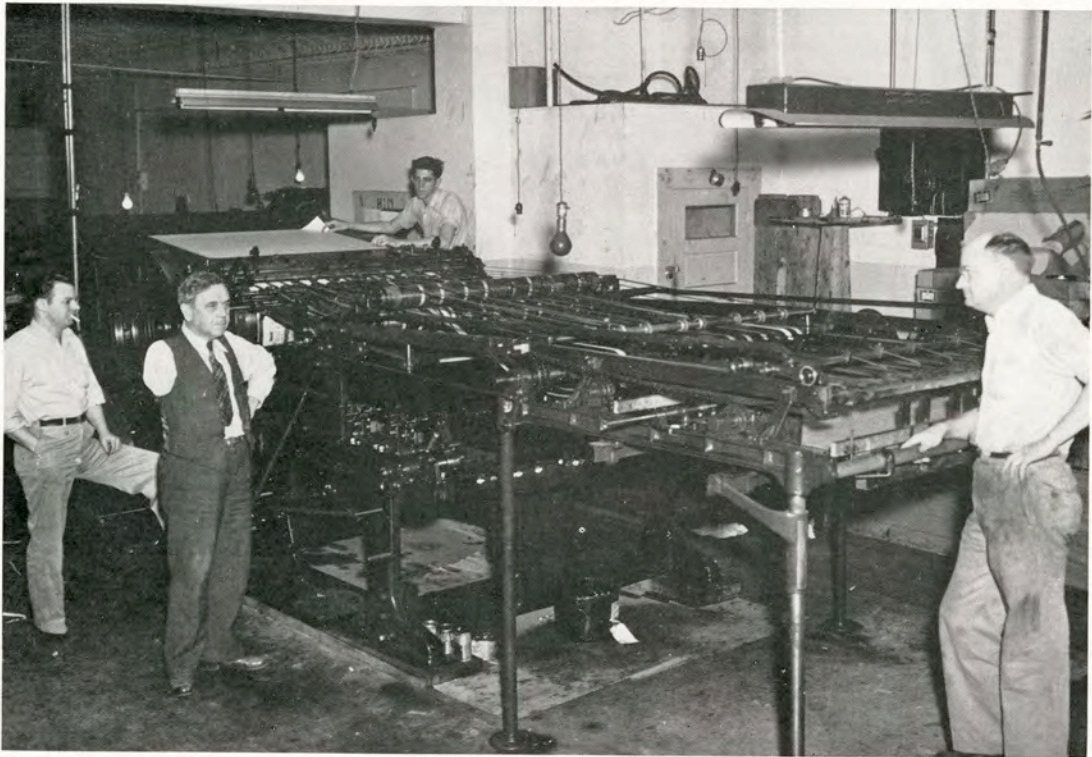








# KINGSVILLE PUBLISHING COMPANY



*The Home of Quality Printing  
In South Texas*



# EVERYONE'S GOING!



... TO THE ...

## Rialto Rex, and Rio Theatres KINGSVILLE

"MOTION PICTURES ARE YOUR  
BEST ENTERTAINMENT"



UNDER DIRECTION OF HALL INDUSTRIES THEATRES



Your Banking House . . .



is a service institution . . . A friendly place  
in which to do business . . . Ready to serve  
the students and faculty of A&I now and  
throughout the years to come.



Robert J. Kleberg & Company

BANKERS

(UNINCORPORATED)






*"We Serve the Nation"*

## J. C. PENNEY COMPANY

KINGSVILLE  
TEXAS

## The Kingsville Lumber Company

Complete Stocks of  
LUMBER  
BUILDING MATERIAL  
and SUPPLIES

Operating the Famous  
RUNNING  SADDLE SHOP

## City Drug Store

"WE ARE PLEASED  
WHEN WE PLEASE YOU"

Phone 611

STERLING CAGE, Prop.



## A&I Store

"PROF" LANIER  
PHONE 99

## FRIENDLY EFFICIENT SERVICE

Hulen Jones

Lloyd Lofton

Archie Klassen

Ray Jones

Henry Kohutek

Harold Lansford

David Leslie

Mr. and Mrs. Cochran



# A Student Institution

OFFERING HIGH QUALITY SCHOOL SUPPLIES

AT THE LOWEST PRICE !



Students . . .

Thank you for your generous patronage of the past year.  
It has been a great pleasure to us to serve the students and  
faculty of A&I.



## MASTERPIECE

TABLETS . . . . . MISCELLANEOUS SUPPLIES . . . . . PAPER  
ENGINEERING MATERIALS . . . . . CANDY . . . . . SOFT DRINKS



## THE TEXT BOOK ROOM

FRANK (Shanky) WHITSON, Manager





KINGSVILLE'S  
*Oldest and Most Complete*  
PHARMACY

●  
TREAT YOUR FRIENDS  
AT OUR FOUNTAIN

HOMEMADE SANDWICHES  
HOME-BAKED PIES  
DELICIOUS COLD DRINKS  
HOMEMADE ICE CREAM

# HARREL DRUG COMPANY

*Complete Drug Service*

PHONE 121

WE DELIVER

## DODGE AND PLYMOUTH

DEALERS

●  
SALES  
and  
SERVICE



# HARREL and NOLAN

EIGHTH and KLEBERG





Students..

IT  
PAYS  
TO  
SHOP  
AT

Ragland's  
Department  
Store



Always Go to Raglands for the Best Values  
In Quality Merchandise in South Texas



*Kingsville's Largest Department Store*



**Raglands**  
DEPARTMENT STORE

COMPLETE OUTFITTERS FOR  
THE WELL-DRESSED COLLEGIAN AND CO-ED



## Meek & Fergeson JEWELERS

•  
Come to us for your  
Jewelry Needs  
•

230 EAST KLEBERG

KINGSVILLE

## Edwards Food Store

:—:  
Grocery      Bakery  
Market

WE DELIVER

PHONE 196

## A South Texas Institution

SERVING THIS DISTRICT  
FOR THIRTY-FOUR YEARS

*Allen*  
FURNITURE CO.  
CORPUS CHRISTI - KINGSVILLE

Funeral Directors  
Ambulance Service

PHONE 500

## "Now You're Cooking With Gas"

The salutation, "Now You're Cookin' with Gas," is currently a part of the American vernacular. It's a popular way of paying tribute to someone for doing a job well. Even though it may be termed a slang expression, our company feels that it is an apt greeting to extend to the Class of '42.

The very fact that you are receiving college degrees substantiates that

"you're cookin' with gas." It shows you have had the foresight to recognize the need of further scholastic preparation for a world which will not be easy. It indicates that you stand ready to accept the challenge facing useful, intelligent citizenship. It is prophetic that you will not shirk in your obligation to serve to the best of your ability.

**HOUSTON** *Natural Gas* **SYSTEM**

FRANK C. SMITH, President



# FIELDS

*The Store for Men*

EVERYTHING IN MEN'S WEAR

All Standard Lines

Quality Clothing

. . . also . . .

Naval Uniforms and Accessories

504 CHAPARRAL

CORPUS CHRISTI

## South Texas Candy Company

Corpus Christi, Texas



"We should like to express our appreciation to the students and the faculty of A. and I. for the co-operation which they have given us in the government flight courses during the past year."

ROD AND BARNEY.

"MORE FLYING makes BETTER PILOTS"



*Keep 'em Flying, Students*

## SMOOTH SAILING

TO THE CLASS OF

1942



The Chamber of Commerce  
of Corpus Christi

TEXAS' FASTEST GROWING CITY



*John A. Ferris*  
FASHIONS FOR MEN

- Knox Hats
- Jayson Suits
- Interwoven Socks
- Fashion Park Suits
- Beau Brummell Ties
- Nettleton Shoes

And Other Nationally Known Brands

CORPUS CHRISTI

RICHTER'S

**ButterKrust**

your FLAVOR loaf

*Selected on merit for serving to the  
students of Texas A. & I.*

CONGRATULATIONS TO EL RANCHO

— from —

**Groce-Parrish Co.**

Wholesale Grocers

VICTORIA — TEXAS

•  
Branches at

ALICE, BAY CITY, BEEVILLE,  
CORPUS CHRISTI and CUERO, TEXAS

*Serving South Texas for Over 32 Years*

To the Class of '42

This is not the end of education but the beginning.  
And, if the road ahead looks difficult, travel it with the  
courage and confidence that is your American heritage.  
Our best wishes go with you . . . .



Humble Oil & Refining Co.

. . . . *A Texas Institution*



The  
Chamber of Commerce



OF KINGSVILLE

*Congratulates*

The A. & I. Student Body

ON THE

Achievements of the Year as Recorded by

*El Rancho 1942*





EVERYTHING IN BUILDING  
MATERIAL

IMPERIAL  
WASHABLE WALLPAPER



PHONE 29

KINGSVILLE

TEXAS

Weisman's Jewelry  
Company

Complete Line of Jewelry  
And Watch Accessories

ELGINS HAMILTONS GRUENS

Gorham and International Silver  
Keepsake Diamonds

"Your Friendly Jeweler"

The  
First National Bank

OF KINGSVILLE

CAPITAL AND SURPLUS \$60,000  
UNITED STATES GOVERNMENT  
DEPOSITARY



Member Federal Deposit Insurance  
Corporation

Cage Hardware  
and Implement Co.



INTERNATIONAL DEALER

G. E. APPLIANCES

COMPLETE REPAIR SHOP

FURNITURE



Courteous and Dependable Service  
Our Policy

KINGSVILLE

PHONE 840



Western Auto Associate Store



RADIO'S -:- BICYCLES  
AUTO SUPPLIES



306 EAST KLEBERG

KINGSVILLE

W. E. SELLS, Owner



Phelps & Dewees & Simmons  
ARCHITECTS

1515 Majestic Building

SAN ANTONIO

TEXAS

THE COVER OF EL RANCHO

Was Manufactured

by

Universal Bookbindery, Inc.

SAN ANTONIO, TEXAS

*The Home of Custom Built Products*



Kingsville Hardware  
Company

●  
GIFTS . . . CHINA . . . STERLING SILVER  
HARDWARE . . . SPORTING GOODS  
JOHN DEERE IMPLEMENTS

●  
CHARLES H. FLATO, III, Manager



REX WRIGHT'S *Home Owned*

Corner Grocery

PHONE 338-339

We Deliver

Home Operated

Your Clothes Are Perfectly  
Cleaned and Pressed When Sent

to the

COLLEGE CLEANERS

PHONE 666

or the

RIALTO CLEANERS

PHONE 776

Lynch Davidson & Co.

DAVIDSON  
CERTIFIED LUMBER  
IS WORTH MORE

"The Place to Buy Lumber"

MAX CORNELIUS, Mgr.

PHONE 35





Piggly  
Wiggly

Kingsville  
Texas

General Office . . . Corpus Christi, Texas

WAREHOUSES

Harlingen . . . Corpus Christi . . . Austin



LOCALITIES IN WHICH H. E. BUTT GROCERY STORES  
ARE OPERATED

BROWNSVILLE  
SAN BENITO  
HARLINGEN  
RAYMONDVILLE  
MERCEDES  
WESLACO  
DONNA  
PHARR  
EDINBURG  
McALLEN  
MISSION

LAREDO  
CORPUS CHRISTI  
ROBSTOWN  
ALICE  
KINGSVILLE  
SINTON  
TAFT  
REFUGIO  
VICTORIA  
BEEVILLE  
KENEDY

DEL RIO  
KERRVILLE  
AUSTIN





We Are Proud of the  
1942

EL RANCHO

and of the

Photography in it

Done By

Cathey Studio

Plaza Hotel

Kingsville, Texas

Jack Cathey



You Take With You  
Our Best Wishes  
For A  
Successful Future

Kingsville Steam Laundry

PHONE NO. 5

STUDENTS . . .

FOR THE BEST . . . INSIST ON

Kingsville

SWEET CREAM

Butter

Dairy Products  
Company

PHONE 92

KINGSVILLE





*When in Corpus Christi*

STOP WHERE . . . . .

COMFORT, COURTESY and FRIENDLINESS

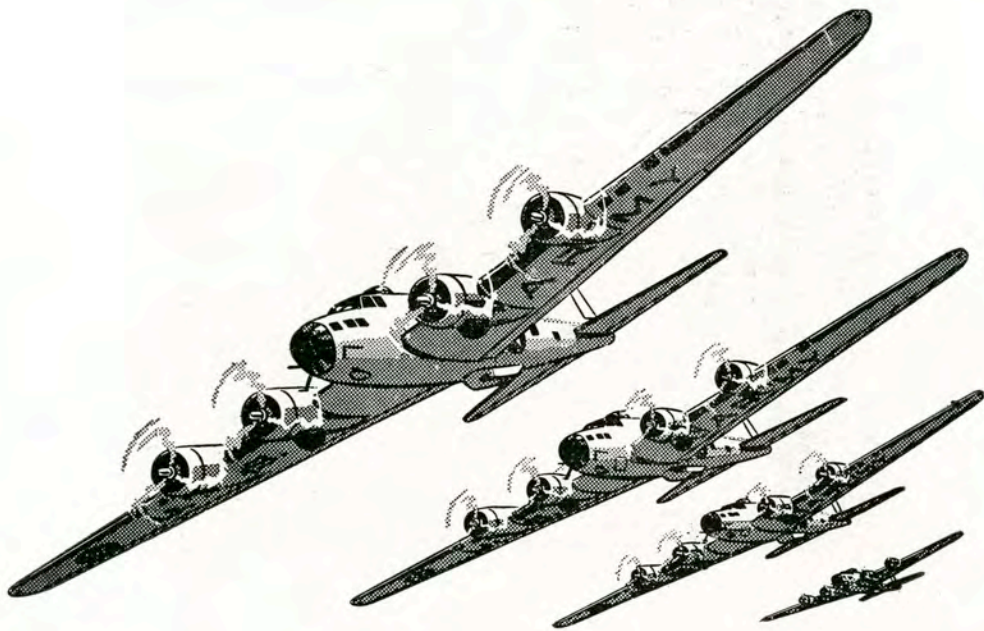
are happily blended to make  
your stay as pleasant as possible

• • •

*The Nueces Hotel*

JAMES E. BARRETT, *Manager*





## **E**clipse of the Rising Sun!

Challenged in two hemispheres, America faces a tremendous test. But the bombers that will blot out the Rising Sun and smash the Swastika are pouring off our production lines.

The biggest industrial job in all history is being done **because America has the electric power to do the job!**

The electric industry was **ready** when the crisis came. The business men who manage the nation's electric

companies had built up power reserves **in advance**. They were ready, too, to meet new demands with new construction. They **added** enough power in 1941 to light **one-fourth of all the nation's homes**.

We of Central Power and Light Company are glad that the electric industry has been able to help make Uncle Sam so **powerful**. We'll stick to the job until the blood-red sun has set and a new day follows darkness!



**CENTRAL POWER AND LIGHT COMPANY**





We are grateful to Mr. Willis, Miss Hager, Mr. Montgomery, Mr. McCulley and members of the Publications Committee for giving us the opportunity of serving Texas College of Arts and Industries this year.



# STUDENT DIRECTORY 1941 - '42

## A

Adkins, Aline Annette, Tivoli  
 Adkins, Clarke, Tivoli  
 Albrecht, Billy, Goliad  
 Albrecht, Myddleton, Edinburg  
 Alvarez, Aurora, Kingsville  
 Amann, Max, Poteet  
 Amsden, Evelyn Jean, Corpus  
 Anderson, Bertha Jean, Corpus  
 Anderson, Joan, Houston  
 Anderson, Pauline, Karnes City  
 Applewhite, Kathryn, Corpus  
 Arbuthnot, Jeannie, Gonzales  
 Arnold, Frank, Mercedes  
 Atkins, Robert Ralph, Floresville  
 Ault, Dorothy, Calallen  
 Austin, Ethyle, Alice  
 Austin, Evelyn, Alice  
 Ayers, Mary Lilliam, Carrizo Springs

## B

Bailey, Bethea, Robstown  
 Bain, Clementine, Kenedy  
 Baker, Jeane, Donna  
 Baker, Laura Nell, Newton  
 Ballenger, Katherine, San Benito  
 Baltis, Barbara Anne, McAllen  
 Barber, Archie, Refugio  
 Barkley, Johnny, Bishop  
 Barlow, Bess Louise, Agua Dulce  
 Barlow, Dorothy D., Agua Dulce  
 Barnett, Betty Jane, Del Rio  
 Barnhart, Anne, Beeville  
 Barnhill, Ellen Bess, Kingsville  
 Batsell, Bob, Brownsville  
 Bear, Melvin, Comanche  
 Beasley, Annie Mary, Beeville  
 Belk, George, Robstown  
 Bell, J. T., San Antonio  
 Belyeu, Georgia, Lockney  
 Belyeu, Lovelle, Lockney  
 Bendele, Bonnie Schroeder, Banquete  
 Bennett, Fred, Weslaco  
 Bennett, Marie, Falfurrias  
 Bennick, Betty Jo, Corpus  
 Billings, Lois, Bandera  
 Bingley, Billie, San Benito  
 Bissett, Daulton, Tivoli  
 Blackstock, Rosemary, Refugio  
 Blahuta, L. V., Robstown  
 Blanton, Marion, Alice  
 Bloxom, Jerry, Robstown  
 Bludworth, Wallace, Kingsville  
 Bluntzer, Kathryn, Corpus  
 Bohner, Roswell, San Benito  
 Bolton, Annie B., Kingsville  
 Boone, John Edward, Goliad  
 Boothman, Earline, Kingsville  
 Boothman, Thomas Harrell, Kingsville  
 Bost, Mildred, Robstown  
 Bost, Robert, Robstown  
 Boswell, Jack E., Bishop  
 Boswell, Sherman W., Kingsville  
 Boucher, Alberta, Alice  
 Bowden, Charles R., Alice  
 Box, Travis, Carrizo Springs  
 Branch, Pauline, Santa Rosa  
 Brannon, Red R., Corpus  
 Brett, Kathleen, Port Lavaca  
 Brock, Phyllis May, Dallas  
 Brooks, Bill, Lytle  
 Brooks, Ima Valentine, Lytle  
 Brown, Doris E., Victoria  
 Brown, Elizabeth, Kingsville

Brown, Jo Nelle, Nixon  
 Brown, Ward, San Antonio  
 Bryant, Eschol A., El Campo  
 Buckhorn, Kenneth C., Dime Box  
 Buescher, Robert, San Antonio  
 Burson, Louise, Campbellton  
 Burney, Doris, Center Point  
 Burrell, Mildred, White Deer  
 Burton, Mrs. W. Byrd, Raymondville  
 Butcher, Mona Ruth, Bishop

## C

Cage, Joe B., Bishop  
 Cage, Taylor, Corpus  
 Calhoun, Jean, Victoria  
 Canales, Belia, Premont  
 Canales, Ester, Premont  
 Canay, America, Ramirez  
 Cannon, Frances, Route 1, Kingsville  
 Carrales, Idolina, Kingsville  
 Carrillo, Conrado G., Benavides  
 Carroll, Don W., Palestine  
 Carson, H. T., Kingsville  
 Carver, Mary, Karnes City  
 Casas, Josefa, Benavides  
 Cave, Winston La Rue, Kingsville  
 Chandler, Cecil, Kingsville  
 Chapin, Nina, Freer  
 Cheatam, K. Winifred, Harlingen  
 Cheney, Maurine, Raymondville  
 Chesnutt, John, Kenedy  
 Chilton, Carl, Port Isabel  
 Clark, Merle, Prairie Lea  
 Clore, David, Brownsville  
 Coffield, Bill, Granger  
 Cook, Harold Jr., Kingsville  
 Cook, Jack, Kingsville  
 Cook, James, Kingsville  
 Craig, Aline, Kingsville  
 Crow, Betty Ruth, Robstown  
 Cryer, D. C., Clarkwood  
 Custer, A. G., Kingsville

## D

Daley, Francis, Chicago, Ill.  
 Daughtry, Betty Jane, Kingsville  
 Davis, Almeda, Davis, Okla.  
 Davis, Bob, Kingsville  
 Davis, C. A., Alice  
 Davis, Doris, Bishop  
 Davis, Elbert, Freer  
 Dean, Della Ruth, Nordheim  
 Dean, Tommy, Poteet  
 Denham, Waitus Kay, Goliad  
 Deyo, Mary, Mercedes  
 Dietz, John, Corpus  
 Dodd, Frank, Raymondville  
 Dodson, Kathleen Norma, Santa Rosa  
 Doggett, Barbara, Kingsville  
 Douglas, Ransom S., Robstown  
 Dowgiello, Alfred, Gary, Ind.  
 Downes, L. E., Pearsall  
 Downing, Evidna, Mercedes  
 Downs, Joe C., Falfurrias  
 Drennan, Rosemary, Alamo

## E

Eddins, Leone, Kingsville  
 Eeds, Edward, Beeville  
 Edwards, Travis J., Somerset  
 Eisenhard, Wm. H., Corpus  
 Elliff, G. A., Banquete  
 Elizondo, Elvira, Ben Bolt

Engelking, Annabelle, Floresville  
 Engels, Lavine, Corpus  
 English, Jack, Refugio  
 Estes, Leon, McAllen  
 Estlinbaum, Ray E., Eagle Lake  
 Evans, Bob, Sinton

## F

Fargerson, Elizabeth, Houston  
 Farley, James R., Goliad  
 Faulk, Imogene, Kingsville  
 Favor, Eugene, Charlotte  
 Featherling, M. E., Sinton  
 Fels, Ellinor, Kingsville  
 Ferguson, Mary Ruth, Kingsville  
 Ferrell, Frances, Kingsville  
 Fiedler, Raymond, Cotulla  
 Fiedler, Welton, Cotulla  
 Fields, Wanda Louise, Palacios  
 Flores, Santos, Raymondville  
 Ford, Jenny Wren, La Feria  
 Ford, Sidney, Karnes City  
 Foster, Dot, Alice  
 Foster, Nona Jean, San Benito  
 Fowler, Ed, Bishop  
 Fritts, L. A., Kingsville  
 Fromme, Archie, Goliad  
 Fromme, Billie Jean, Goliad  
 Fry, Betty Jo, Kingsville  
 Fry, Carolyn, Kingsville

## G

Gabbert, Vivian, Corpus  
 Galaviz, Hilda, Robstown  
 Galle, Nelson, Goliad  
 Gannaway, Marie, Corpus  
 Garcia, Estefana, Kingsville  
 Garcia, Amalia, Kingsville  
 Garcia, Julio, Mercedes  
 Gardier, Kent Jr., Gonzales  
 Garner, Lockie Jane, Kingsbury  
 Garza, Gilberto Alfonso, Edinburg  
 Garza, Rodolfo, Mission  
 Garza, Trinidad, McAllen  
 Gerdes, Jack, El Campo  
 Gerry, Kathryn, Weslaco  
 Gentry, Bob, Canton  
 Gibbs, Valmia, Kingsville  
 Gilbreath, Doris, Alice  
 Gillespie, Melba, Robstown  
 Gilstrap, Tommy O'Shea, Kingsville  
 Gipe, Marjorie, Weslaco  
 Gise, Betty, Yoakum  
 Glascock, Hazel, Kingsville  
 Goehring, Emily, Runge  
 Gonzales, Amelia Amois, Benavides  
 Goode, Kenneth, Weimar  
 Goodman, Clay, Laredo  
 Goodrich, James D., Ft. Brown  
 Gourley, Doris, Bishop  
 Grabowske, Mary Lee, Houston  
 Griffith, Rosemary, Portland  
 Grimes, Anna, Banquete  
 Guedin, Ernest, Taft  
 Gutierrez, Eufenia N., Kingsville  
 Guttman, Paul Boyd, Corpus

## H

Hafer, Joyce, Driscoll  
 Hager, Dora, Mercedes  
 Haisley, Claude C., Taft  
 Haley, Bess, Cleburne  
 Hall, Inez C., Sinton



## STUDENT DIRECTORY 1941 - '42

Hansard, Margaret, El Campo  
 Hansen, Billie Mignon, Victoria  
 Harbison, Hazel Hardy, Hebronville  
 Hardy, Mary Frances, Karnes City  
 Harper, Barbara, Alice  
 Harper, Delton, Driscoll  
 Harper, Frank, Kingsville  
 Harper, Holly, San Antonio  
 Harrell, T. A., Bishop  
 Harris, Edith Marie, Kingsville  
 Harris, Jack Hughes, Corpus  
 Harris, Margarette, Corpus  
 Harrison, J. R., Freer  
 Hart, Willie Grace, Edna  
 Hartley, Comel, Blooming Grove  
 Harvey, Mary Jane, Corpus  
 Harwood, Annie Laurie, Port Lavaca  
 Harwood, Nell, Port Lavaca  
 Havre, Frances D., Brownsville  
 Hawkes, Samuel Thomas, Sabinol  
 Hayes, Bert, Goliad  
 Heller, W. L., Alvin  
 Helm, Alvin R., Kenedy  
 Herring, Doris, Bishop  
 Hibler, Marion Y., Kingsville  
 Hiesermann, Mable, San Juan  
 Hiesermann, Winnie Marie, San Juan  
 Hilbrich, Alvin P., Kenedy  
 Hilburn, Elmo A., Poteet  
 Hill, Greg A., Floresville  
 Hobrecht, Nina Elizabeth, Beeville  
 Hobrecht, Joyce, Charlotte  
 Hoffman, Wilburn, Memphis, Tenn.  
 Holland, Mrs. Estella C., Donna  
 Holland, Jo Ann, Yoakum  
 Holley, Louise, La Feria  
 Holmes, Bill, McAllen  
 Holmes, Wilburn, Alice  
 Horne, Mary Jean, Corpus  
 Horne, Neva Lois, Corpus  
 Hubalek, Jerome, Ganado  
 Hubbard, George H., Donna  
 Huddleston, Jacqueline, Palacios  
 Hurlbut, Doris, Alice

### J

Jackson, Adele Shafer, Kingsville  
 Jackson, Ruth, Sinton  
 Jacob, Joe, Goliad  
 Jarrell, Jack, Bishop  
 Jensen, Russell, South Bend, Ind.  
 Jester, Elizabeth, Kingsville  
 Jones, Jack, Luling

### K

Kallas, Marjorie, Cleveland, Ohio  
 Kasten, August, Nordheim  
 Kaufner, Billie Jean, Riviera  
 Keithley, Julia, Cotulla  
 Keller, Mary, Devine  
 Kelley, Christine, Banquete  
 Kelly, Tom, Bishop  
 Kelly, Levi, Bishop  
 Keng, Robert J., Skidmore  
 Kennedy, Bill, Kingsville  
 Kerlick, Louis, Karnes City  
 Kidder, Betsy Lee, Mercedes  
 Kibborn, Doris, Kingsville  
 Kirkwood, Louise, Rockport  
 Knight, Ellen, Rio Hondo  
 Kohutak, Henry, Refugio  
 Korges, Sarah, Kingsville  
 Korges, Dorothy Lee, Kingsville  
 Krug, Alicia, Kingsville

Kruse, Olan, Bishop  
 Kulchak, Clarence, Alice  
 Kullin, Bobbie, Cheapside  
 Kuykendall, Edward, Tilden

### L

Laechel, Zo, Sinton  
 Landers, Rufus, Bedias  
 Landrum, Dorothy Ruth, Kingsville  
 Lansford, Elene, Catarina  
 Lansford, Harold, Catarina  
 Lattimore, Clayton Davis, Marlow, Okla.  
 Laursen, Frances, La Feria  
 Lawrence, Virginia Belle, San Antonio  
 Lawson, Dorothy, Freer  
 Lee, Cleve, Driscoll  
 Lee, Glenn, Falfurrias  
 Lee, Lillian, Robstown  
 Lewis, Gerald, Sinton  
 Littlejohn, Daphne, Kingsville  
 Liggett, Milford, Collegeport  
 Lloyd, A. C., Alice  
 London, Doyle, Corpus  
 Longoria, Esmeralda, Kingsville

### Mc

McAda, Evelyn, Campbellton  
 McBurnett, David, Robstown  
 McBurnett, Sam, Robstown  
 McCandless, Lena, Pearsall  
 McCarty, Rachel, Beeville  
 McCaskill, Harold, Gonzales  
 McClaugherty, Eleanor, Sandia  
 McClung, June, Kingsville  
 McConnico, John, Gregory  
 McCord, Kirk, Kingsville  
 McCurdy, Virginia, Kingsville  
 McGregor, Laura Marie, Corpus  
 McGuffin, Joe, Dinero  
 McKinley, Clyde, Pearsall  
 McLean, James, Corpus  
 McManus, Ruth, Kenedy  
 McManus, Mary Virginia, Kenedy  
 McNair, James, Brownsville  
 McNeil, James, Grand Bay, Ala.  
 McNeil, Josephine, Mercedes  
 McNeill, Kathryn, Kingsville  
 McRoberts, Virginia Ruth, Kingsville

### M

Maddux, Virginia May, Pharr  
 Mahoney, Mary, Jourdanton  
 Manley, Harvey, Alamo  
 Manning, Claude, Alice  
 Manning, Coy, Alice  
 Maris, Roscoe, McAllen  
 Marler, Bill, Kingsville  
 Marsters, Anne, Kingsville  
 Marsters, Leland, Kingsville  
 Martens, Elvera, Alice  
 Martin, Annette, Cotulla  
 Martin, Patricia, Raymondville  
 Martin, Samuel, Garwood  
 Martin, Sidney, Pleasanton  
 Martinez, Baudelia, Penitas  
 Masterson, Margaret K., Laredo  
 Melton, Ella Beth, Pharr  
 Mendiola, Jose, San Benito  
 Mertens, Hoyt, Kingsville  
 Meuth, Ralph Raymond, Skidmore  
 Meyer, Elmo, Poth  
 Mikel, Mary, Bishop

Miller, Donna, Wichita, Kan.  
 Mills, Marie, Karnes City  
 Mitchell, Robert, Floresville  
 Mixon, Aleta Jewell, Riviera  
 Montz, Dick, Falfurrias  
 Mooney, Vandiver, El Campo  
 Moore, Arthur, Center Point  
 Moore, Harry, Kingsville  
 Moore, Goldie, Driscoll  
 Moreno, Graciela, Hebronville  
 Morris, Fred, Carthage, Ill.  
 Morrow, Earl M., Sinton  
 Moss, Rita, Sinton  
 Mullens, James, San Antonio  
 Muller, Gladys, Kingsville  
 Muller, Godfrey, Kingsville  
 Mumme, Agnes, Los Angeles  
 Murphy, Laura, Hermleigh

### N

Nance, Bill, Harlingen  
 Nelson, Edwy Jeanne, Kingsville  
 Nevill, Richard, Dallas  
 Nevill, Margaret, Dallas  
 Noakes, Marilyn, Calallen  
 Nolte, Walter, Ingleside  
 Nuckols, Mary Elizabeth, Harlingen  
 Null, Marvin, Refugio

### O

Odom, Dare, Edcouch  
 O'Neill, Katherine, McAllen  
 Orr, Fern, Corpus

### P

Parham, Doris, Raymondville  
 Parker, Evanita, Kingsville  
 Parker, Evelyn B., Kingsville  
 Parker, James, Kingsville  
 Parten, Rose, Alamo  
 Patterson, Donald, Hillsboro  
 Patterson, Lorene, Benavides  
 Peek, Ben L., Robstown  
 Peeks, Stella, Raymondville  
 Pena, Amelia, Alice  
 Pena, Noe O., Roma  
 Perez, Irma Minerva, Alice  
 Perrenot, Carol, Rockport  
 Person, Charlotte, Karnes City  
 Peterson, Howard, McAllen  
 Pettus, Anne, Goliad  
 Pierce, Leland, Premont  
 Pitzer, Rex, Refugio  
 Platt, Betty, San Juan  
 Plummer, Sherman Ray, Kingsville  
 Pond, Howard, San Antonio  
 Pope, Harold, McAllen  
 Power, Billy, Edna

### R

Raine, Charles R., Uvalde  
 Rainwater, Leo M., Raymondville  
 Ramirez, Bertha M., Benavides  
 Ramirez, Estella, San Diego  
 Ramos, Evangelina, Hebronville  
 Reagan, J. Curtis, Goliad  
 Rhinehart, Babette, Alamo  
 Rhea, Sterling, Beeville  
 Richards, Mary Frances, Driscoll  
 Richards, William Boone, Paris  
 Richardson, Evelyn, Bishop



## STUDENT DIRECTORY 1941-'42

Ridgeway, Mayme Mae, Aransas Pass  
 Rickford, Enid Eva, Santa Rosa  
 Riggs, Ina Pearl, Beeville  
 Ringwald, Dorothy, Alice  
 Ripper, Ralph, Columbus  
 Roberts, Kathryn, Blessing  
 Roberts, Kathryn, Kingsville  
 Robertson, Catherine, San Antonio  
 Robbins, Bonnie, Beverly Hills, Calif.  
 Robie, Ralph, San Antonio  
 Roegels, Shelton, Alice  
 Rogers, Willie B., Driscoll  
 Rosamond, Betty Sue, Driscoll  
 Rouse, Joye, Alice  
 Roewe, Wilmer, Bishop

### S

Saenz, Enrique, McAllen  
 Sasse, Ray, San Antonio  
 Sasmann, Virginia, Robstown  
 Saunders, Mary Nenalee, Kingsville  
 Salinas, Frances, Raymondville  
 Sawey, Orlan L., Sabin  
 Sedwick, Eugenia, Kingsville  
 Schaefer, Lucile, Kenedy  
 Schmidt, Johnnie Marie, Port Isabel  
 Schulze, Fred, Devine  
 Scogin, John, Corpus  
 Scott, Dorothy, Pearsall  
 Scott, Helen, Raymondville  
 Seifert, Franklyn, Weimar  
 Seifert, Henrietta, Runge  
 Shoemaker, Robert V., Santa Rosa  
 Shoemate, Foy Lee, Edna  
 Schweers, Leo L., Del Rio  
 Shrider, Jean, Ingleside  
 Simmons, Inez, Corpus  
 Simons, Jewel Margaret, Kingsville  
 Sims, Willie Bess, Sinton  
 Smith, Daisy Ann, Banquete  
 Smith, Fay, Bay City  
 Smith, Frank, Freer  
 Smith, Gladys, Orange Grove  
 Smith, Lloyd, Mission  
 Smith, Nola Marie, Kingsville  
 Spears, Florence, San Benito  
 Spence, Carolyn Josephine, Kingsville  
 Spencer, Mrs. Lois C., Corpus  
 Springer, Henry, Algoa  
 Staggs, Doris, Hebronville  
 Stasney, Gus Ralph, Crosby  
 Staton, Carrie Lucille, Odem  
 Stegall, Maurine, Eustace  
 Stein, Merlee Ella, Fredericksburg  
 Steinberg, Dorothy, Floresville  
 Stephens, Dolores, Raymondville  
 Steves, Maurine, Rosharon  
 Stimson, Aubra Pearl, Kenedy  
 Stoker, Marjorye, Corpus  
 Stokes, Fred, Hickman, Ky.  
 Stolley, Betty, Kingsville  
 Sugarek, Melvin, Skidmore  
 Sullivan, Charles, Corpus  
 Summerlin, Claude, Kingsville

### T

Tanner, La Verne, Kingsville  
 Taylor, Esther, Goliad  
 Taylor, Gordon Ennistho, Whitsett  
 Taylor, Maurice, El Campo  
 Teas, Archer B., Bishop  
 Terhune, George K., Nashville, Tenn.  
 Terry, Madele, Seguin  
 Terry, Ray S., Sour Lake

Tilly, Mrs. Sarah D., Kingsville  
 Thomas, Madge, Kingsville  
 Thomas, Mary Gwen, Aransas Pass  
 Thomas, Cody, Taft  
 Thomas, Norman, Woodsboro  
 Thompson, Bessye, San Benito  
 Thompson, Naoma, Utopia  
 Thweatt, Mary Elizabeth, Corpus  
 Tobias, Dorothy, Corpus  
 Tolhurst, Mrs. B. Helena, Kingsville  
 Tomson, J. B., Dallas  
 Towns, Albert, Gonzales  
 Treptow, Paul, Beeville  
 Tribby, Roy J., Vanderbilt  
 True, Alene, Bishop  
 True, Irene, Bishop  
 True, Marjorie, Alice  
 True, Virginia Nell, Bishop  
 Tumlinson, Annette, Carrizo Springs  
 Tunnell, Nellie Virginia, Kingsville  
 Tunnell, William, Gregory  
 Turner, Elizabeth, Donna

### V

Vertrees, Betty, Donna  
 Vargo, John Paul, Austin  
 Vaughan, Carrie Jo, Pearsall  
 Veale, Paul, Harlingen  
 Vinson, Gerald, Uvalde  
 Vollmer, Lorraine, Mission  
 Vollmer, Merwin, Mission  
 Vorpahl, Weldon, La Vernia

### W

Wade, Aileen, Edcouch  
 Waddell, Raymond, Eagle Lake  
 Wagnon, Gaynelle, Mathis  
 Wallace, June, Alice  
 Walraven, O. D., Kingsville  
 Walters, Margaret, Laredo  
 Waller, Govie, Los Fresnos  
 Walsh, Vera, Chicago, Ill.  
 Ward, Rhoda, Bishop  
 Webb, Alice Marie, Alice  
 Weber, Ruth, Bishop  
 Weekley, Dick, Pearsall  
 Wells, Jo Ann, Kingsville  
 Westerholm, Leo, El Campo  
 Wheat, Van Winn, Pharr  
 White, Floy, Corpus  
 White, Glen G., Donna  
 White, Jean, Edinburg  
 White, Mary Helen, Tynan  
 Whitley, Ima Jean, Odem  
 Wiederhold, Shirley, McAllen  
 Wiederkehr, Alvin, Freer  
 Wiederkehr, Leon, Freer  
 Williams, Anne, Corpus  
 Williams, Millard, Raymondville  
 Williams, Rita Jayne, Corpus  
 Williams, Margaret, Kingsville  
 Willis, W. B., Corpus  
 Wilson, Bob, Yancy  
 Wilson, Frank, Weslaco  
 Wilson, Mary Adeline, Lyford  
 Wilson, Willard, Moore  
 Wirth, Norman, Santa Rosa  
 Woodard, Frances, Luling  
 Wooderson, Marilyn Jean, Cuero  
 Wooderson, Rosemary, Cuero  
 Woolett, Leroy, Tampico, Mex.  
 Woolett, Donald, Tampico, Mex.  
 Woolston, Jane Harley, Kingsville  
 Woolston, Mary, Kingsville

### Y

Yaakey, Bess Hal, Agua Dulce  
 Yaws, Harry, Alta Loma  
 Yanta, Valeria Mary, Runge

### Z

Zackie, Rosemary, Corpus  
 Zezula, Leona Bridget, Runge



## Hasta Luego

To students of A&I, wherever you may be after this year, the Editor and staff of the 1942 El Rancho hope that this yearbook will bring back fond memories for many years to come. Memories filled with joy, gladness, pleasant ones, not all of your activities pictured here but some to refresh in your thoughts the happenings on the A&I campus during the year 1941-42.

To Bill Murphree of the Southwestern Engraving Company for his helpful ideas and suggestions, Jack Cathey for his fine work on the Lantana and other pictures, Kingsville Publishing Company and Universal Bookbindery for their fine work in helping publish the most attractive book possible, I wish to express very sincere appreciation and gratitude.

Together with these I wish to thank especially Mr. Montgomery for his cooperation, Myrtle Wolfshohl for the publicity received in *The South Texan*, Mr. McCulley for helping with the business management and the members of the El Rancho staff whose conscientious efforts helped make possible this publication.

The 1942 El Rancho is complete now, the rush is over. We, the staff, hope you may enjoy it for what it means and hope that it will mean as much to you as it does to us.

*Dona Hager*















